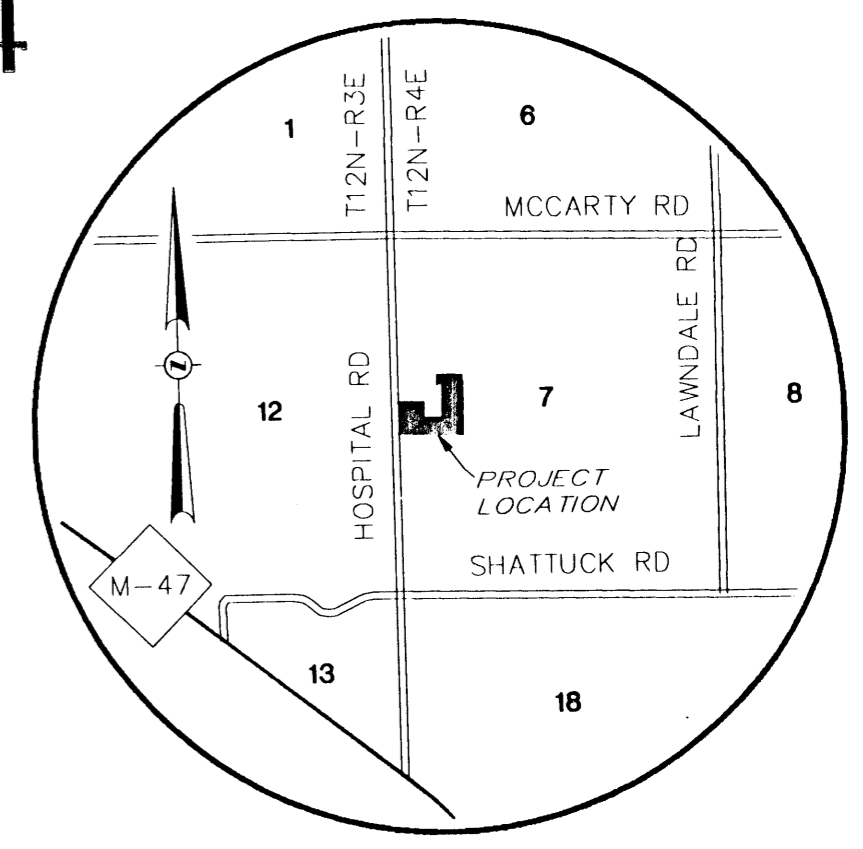
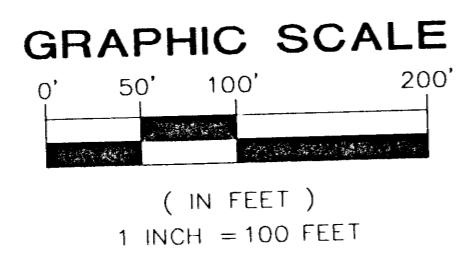


GATEHOUSE MANOR ESTATES NO. 4

PART OF THE FRACTIONAL NW 1/4 OF SECTION 7, T12N-R4E
SAGINAW TOWNSHIP, SAGINAW COUNTY, MICHIGAN



LOCATION MAP
NOT TO SCALE



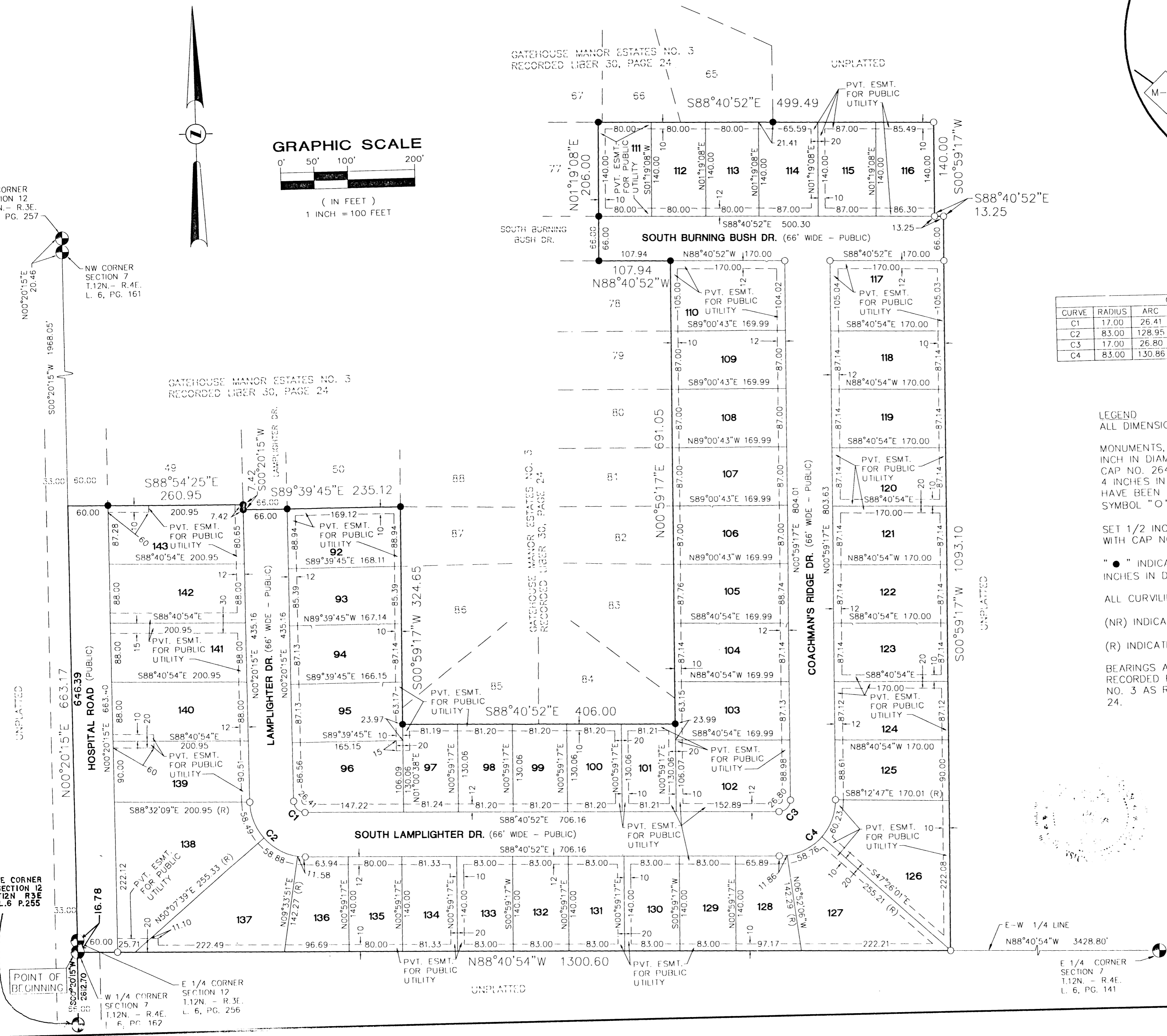
NE CORNER SECTION 12 T.12N. - R.3E. L. 6, PG. 257

NW CORNER SECTION 7 T.12N. - R.4E. L. 6, PG. 161

GATEHOUSE MANOR ESTATES NO. 3 RECORDED LIBER 30, PAGE 24

GATEHOUSE MANOR ESTATES NO. 3 RECORDED LIBER 30, PAGE 24

UNPLATTED



CURVE TABLE					
CURVE	RADIUS	ARC	CHORD	CHD. BRG.	DELTA ANGLE
C1	17.00	26.41	23.83	S44°10'18"E	89°01'07"
C2	83.00	128.95	116.37	S44°10'18"E	89°01'07"
C3	17.00	26.80	24.11	N46°09'13"E	90°19'51"
C4	83.00	130.86	117.72	N46°09'13"E	90°19'51"

LEGEND
ALL DIMENSIONS ARE IN FEET.

MONUMENTS, CONSISTING OF STEEL RODS, ONE HALF INCH IN DIAMETER AND 36 INCHES IN LENGTH WITH CAP NO. 26454, ENCASED IN CONCRETE CYLINDERS, 4 INCHES IN DIAMETER AND 36 INCHES IN LENGTH, HAVE BEEN PLACED AT ALL POINTS SHOWN BY SYMBOL "O".

SET 1/2 INCH STEEL ROD, 18 INCHES IN LENGTH WITH CAP NO. 26454, AT ALL LOT CORNERS.

"●" INDICATES FOUND CONCRETE MONUMENT 4 INCHES IN DIAMETER WITH A 1/2 INCH STEEL ROD.

ALL CURVILINEAR DIMENSIONS ARE ARC LENGTHS.

(NR) INDICATES NON-RADIAL LINE.

(R) INDICATES RADIAL LINE.

BEARINGS AS SHOWN ARE REFERENCED TO THE RECORDED PLAT OF GATEHOUSE MANOR ESTATES NO. 3 AS RECORDED IN LIBER 30 OF PLATS, PAGE 24.

Brian D Ferguson
BRIAN D FERGUSON, P.S. 26454



POINT OF BEGINNING
W 1/4 CORNER SECTION 7 T.12N. - R.4E. L. 6, PG. 162

E 1/4 CORNER SECTION 12 T.12N. - R.3E. L. 6, PG. 256

E 1/4 CORNER SECTION 7 T.12N. - R.4E. L. 6, PG. 141