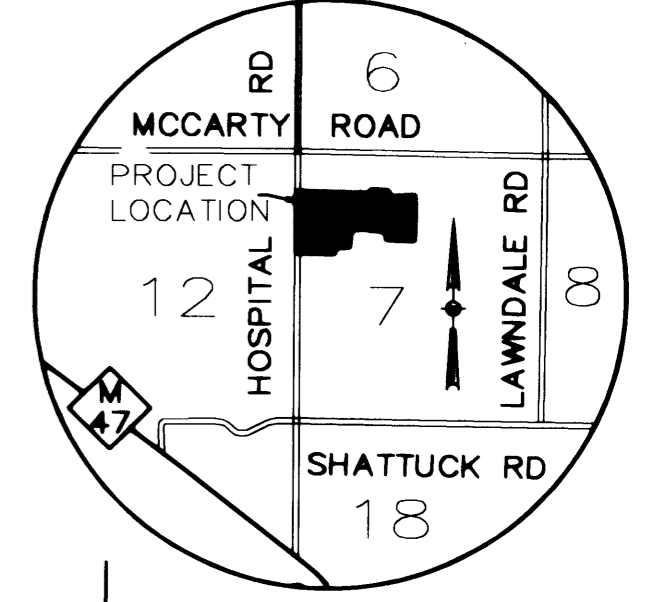
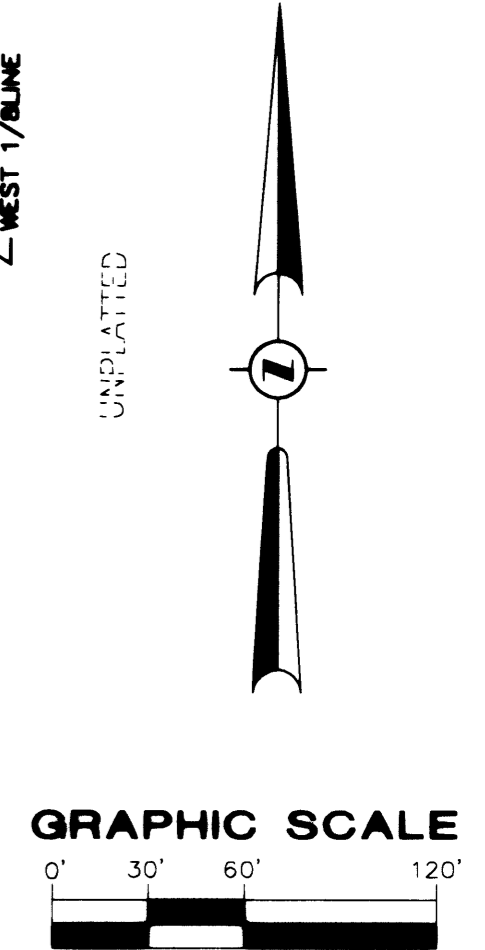
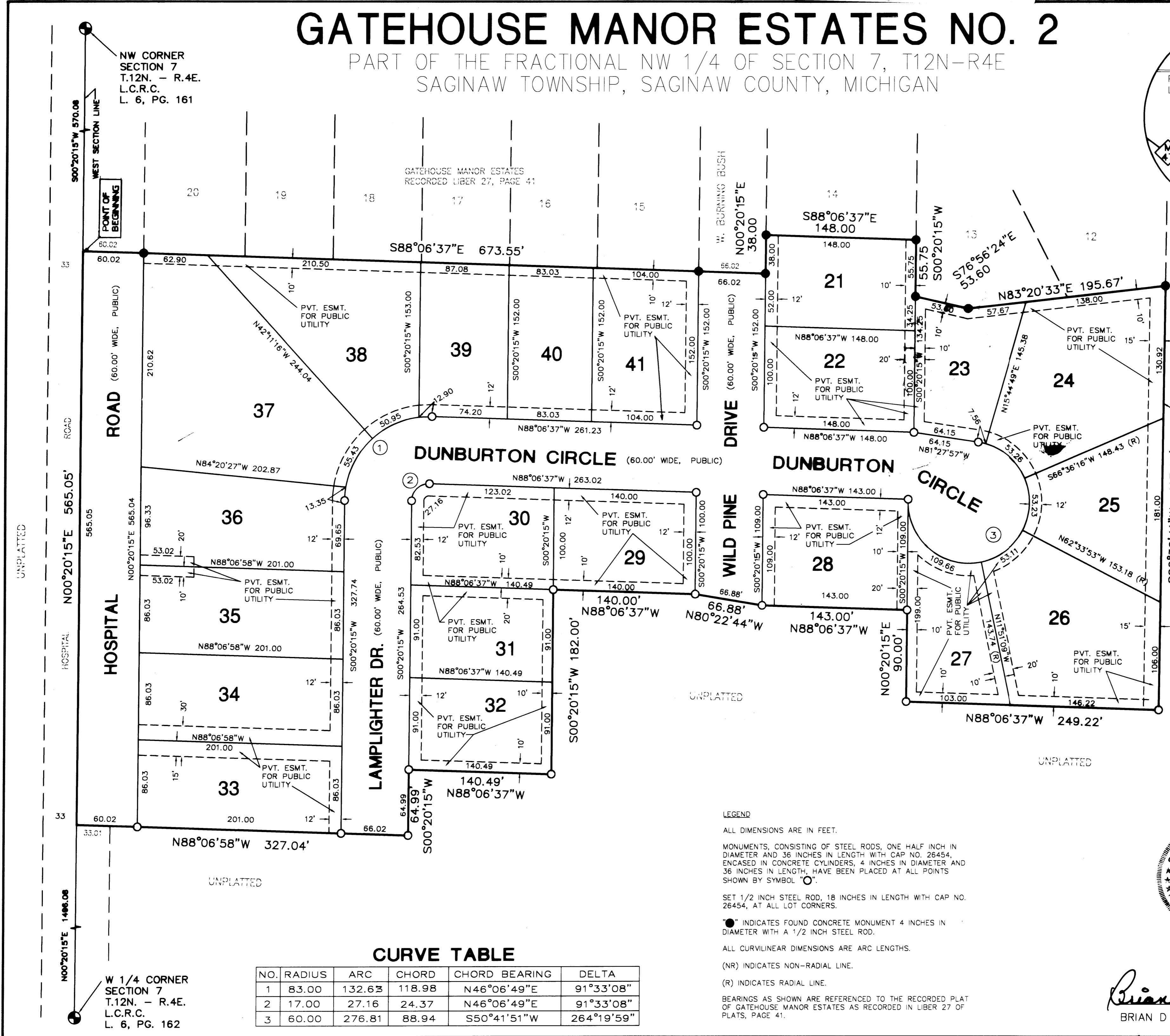


# GATEHOUSE MANOR ESTATES NO. 2

PART OF THE FRACTIONAL NW 1/4 OF SECTION 7, T12N-R4E  
 SAGINAW TOWNSHIP, SAGINAW COUNTY, MICHIGAN



LOCATION MAP  
NOT TO SCALE



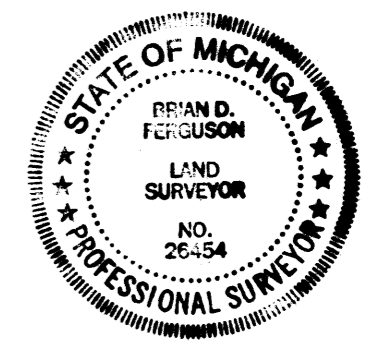
GRAPHIC SCALE  
 ( IN FEET )  
 1 INCH = 60 FEET

### CURVE TABLE

NO.	RADIUS	ARC	CHORD	CHORD BEARING	DELTA
1	83.00	132.63	118.98	N46°06'49"E	91°33'08"
2	17.00	27.16	24.37	N46°06'49"E	91°33'08"
3	60.00	276.81	88.94	S50°41'51"W	264°19'59"

### LEGEND

ALL DIMENSIONS ARE IN FEET.  
 MONUMENTS, CONSISTING OF STEEL RODS, ONE HALF INCH IN DIAMETER AND 36 INCHES IN LENGTH WITH CAP NO. 26454, ENCASED IN CONCRETE CYLINDERS, 4 INCHES IN DIAMETER AND 36 INCHES IN LENGTH, HAVE BEEN PLACED AT ALL POINTS SHOWN BY SYMBOL "O".  
 SET 1/2 INCH STEEL ROD, 18 INCHES IN LENGTH WITH CAP NO. 26454, AT ALL LOT CORNERS.  
 "●" INDICATES FOUND CONCRETE MONUMENT 4 INCHES IN DIAMETER WITH A 1/2 INCH STEEL ROD.  
 ALL CURVILINEAR DIMENSIONS ARE ARC LENGTHS.  
 (NR) INDICATES NON-RADIAL LINE.  
 (R) INDICATES RADIAL LINE.  
 BEARINGS AS SHOWN ARE REFERENCED TO THE RECORDED PLAT OF GATEHOUSE MANOR ESTATES AS RECORDED IN LIBER 27 OF PLATS, PAGE 41.



*Brian D. Ferguson*  
 BRIAN D FERGUSON, PS #26454