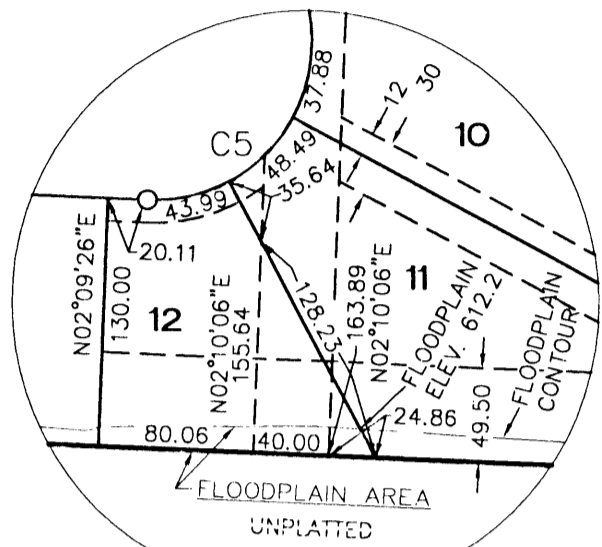


# HARTFORD ESTATES

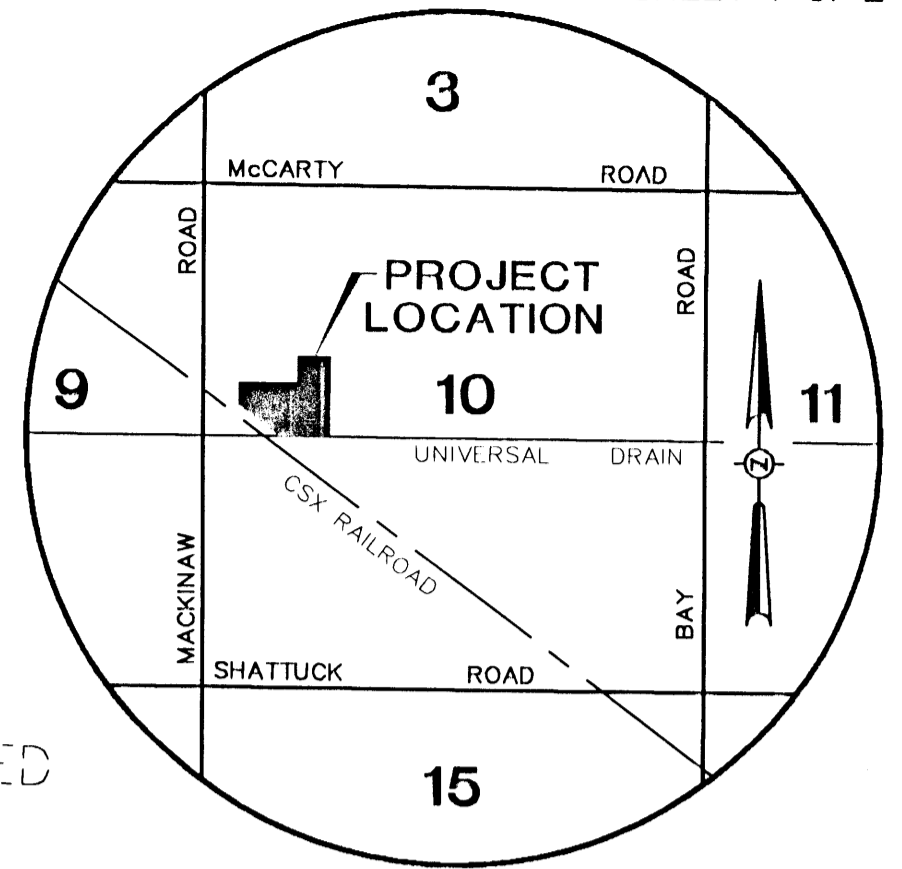
PART OF THE NW 1/4 OF SECTION 10, T12N-R4E  
SAGINAW TOWNSHIP, SAGINAW CO., MICHIGAN

NW CORNER  
SECTION 10 T12N-R4E  
LAND CORNER RECORDATION  
CERTIFICATE L 6, PG 154

THIS PLAT IS SUBJECT TO RESTRICTIONS AS  
REQUIRED BY ACT 288 OF 1967, AS AMENDED  
ON CERTAIN LOTS WITH RESPECT TO THE  
REQUIREMENTS OF THE MICHIGAN DEPARTMENT  
OF ENVIRONMENTAL QUALITY WHICH ARE  
RECORDED IN LIBER 2306, PAGE  
658 OF RECORDS OF THIS COUNTY.

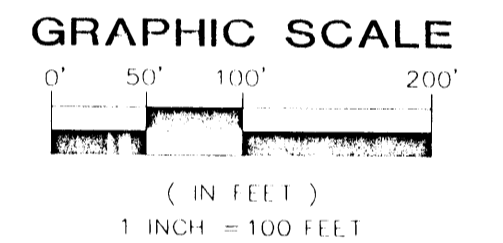


DETAIL  
NO SCALE



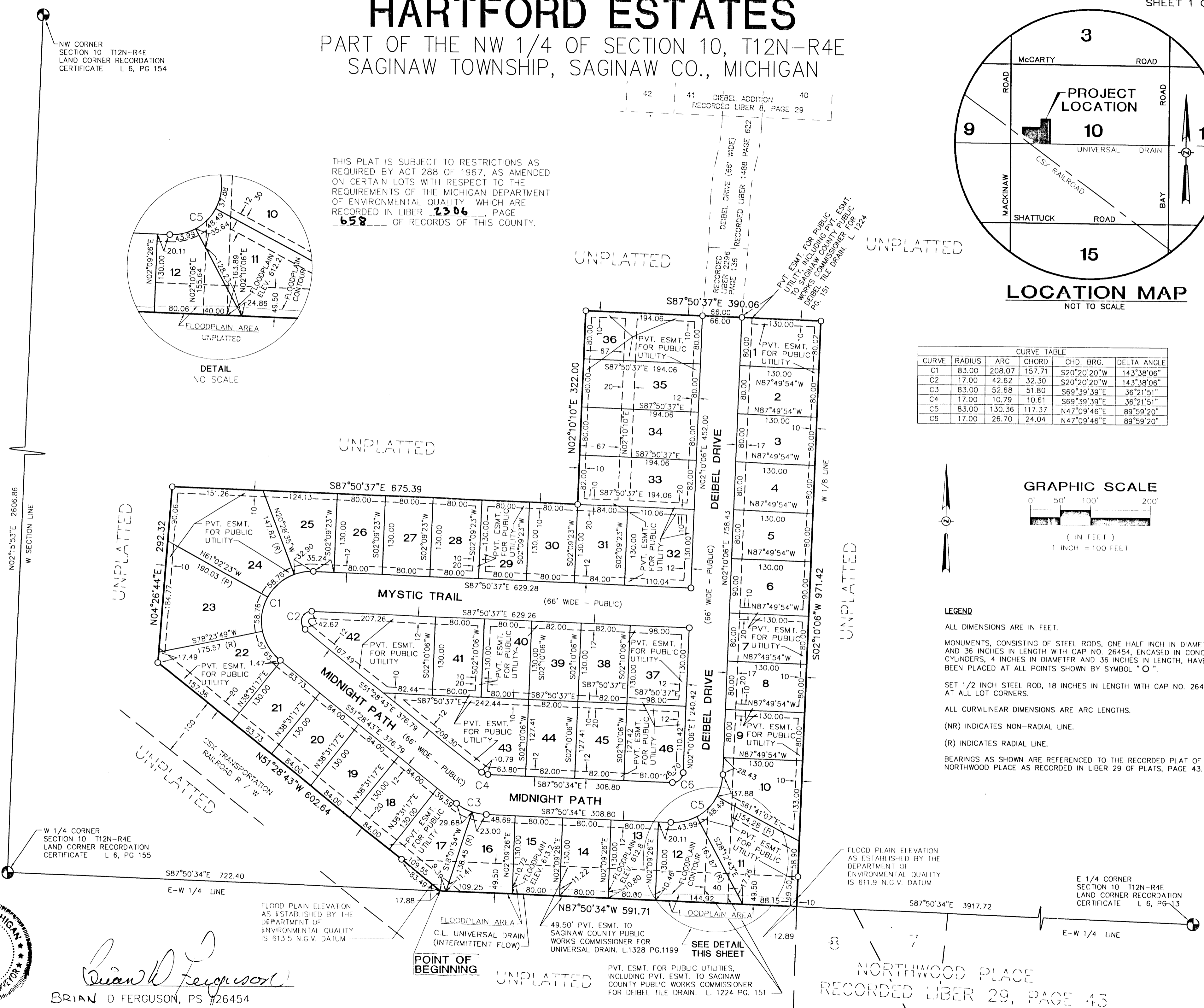
LOCATION MAP  
NOT TO SCALE

CURVE TABLE					
CURVE	RADIUS	ARC	CHORD	CHD. BRG.	DELTA ANGLE
C1	83.00	208.07	157.71	S20°20'20"W	143°38'06"
C2	17.00	42.62	32.30	S20°20'20"W	143°38'06"
C3	83.00	52.68	51.80	S69°39'39"E	36°21'51"
C4	17.00	10.79	10.61	S69°39'39"E	36°21'51"
C5	83.00	130.36	117.37	N47°09'46"E	89°59'20"
C6	17.00	26.70	24.04	N47°09'46"E	89°59'20"



**LEGEND**

- ALL DIMENSIONS ARE IN FEET.
- MONUMENTS, CONSISTING OF STEEL RODS, ONE HALF INCH IN DIAMETER AND 36 INCHES IN LENGTH WITH CAP NO. 26454, ENCASED IN CONCRETE CYLINDERS, 4 INCHES IN DIAMETER AND 36 INCHES IN LENGTH, HAVE BEEN PLACED AT ALL POINTS SHOWN BY SYMBOL "O".
- SET 1/2 INCH STEEL ROD, 18 INCHES IN LENGTH WITH CAP NO. 26454, AT ALL LOT CORNERS.
- ALL CURVILINEAR DIMENSIONS ARE ARC LENGTHS.
- (NR) INDICATES NON-RADIAL LINE.
- (R) INDICATES RADIAL LINE.
- BEARINGS AS SHOWN ARE REFERENCED TO THE RECORDED PLAT OF NORTHWOOD PLACE AS RECORDED IN LIBER 29 OF PLATS, PAGE 43.



N02°5'53"E 2606.86  
W SECTION LINE

W 1/4 CORNER  
SECTION 10 T12N-R4E  
LAND CORNER RECORDATION  
CERTIFICATE L 6, PG 155

BRIAN D FERGUSON, PS #26454



*Brian D Ferguson*  
BRIAN D FERGUSON, PS #26454

FLOOD PLAIN ELEVATION  
AS ESTABLISHED BY THE  
DEPARTMENT OF  
ENVIRONMENTAL QUALITY  
IS 613.5 N.G.V. DATUM

FLOODPLAIN AREA  
C.L. UNIVERSAL DRAIN  
(INTERMITTENT FLOW)

POINT OF  
BEGINNING

49.50' PVT. ESMT. TO  
SAGINAW COUNTY PUBLIC  
WORKS COMMISSIONER FOR  
UNIVERSAL DRAIN. L.1328 PG.1199

PVT. ESMT. FOR PUBLIC UTILITIES,  
INCLUDING PVT. ESMT. TO SAGINAW  
COUNTY PUBLIC WORKS COMMISSIONER  
FOR DEIBEL TILE DRAIN. L. 1224 PG. 151

FLOOD PLAIN ELEVATION  
AS ESTABLISHED BY THE  
DEPARTMENT OF  
ENVIRONMENTAL QUALITY  
IS 611.9 N.G.V. DATUM

NORTHWOOD PLACE  
RECORDED LIBER 29, PAGE 43