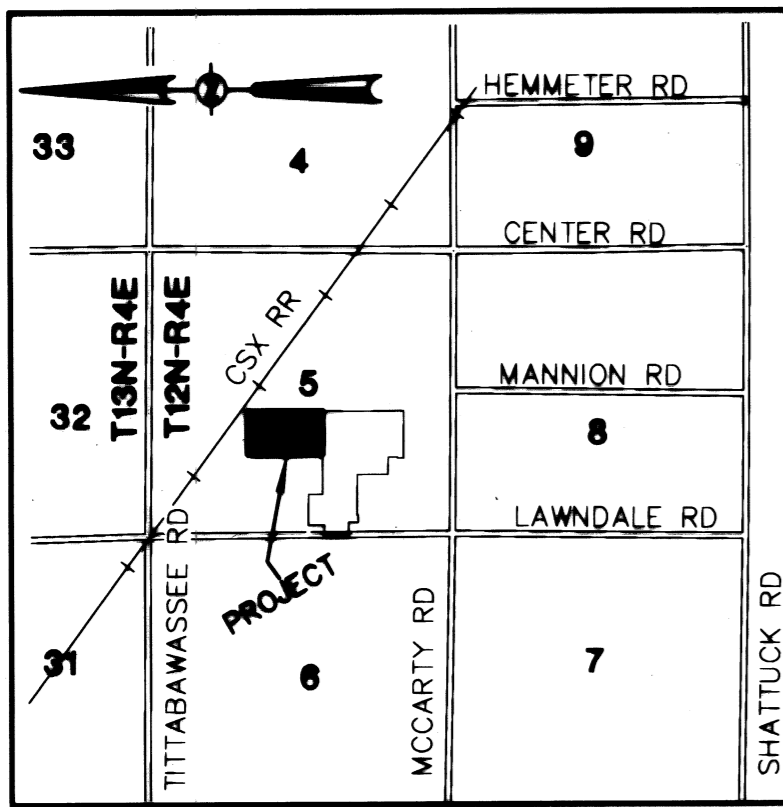


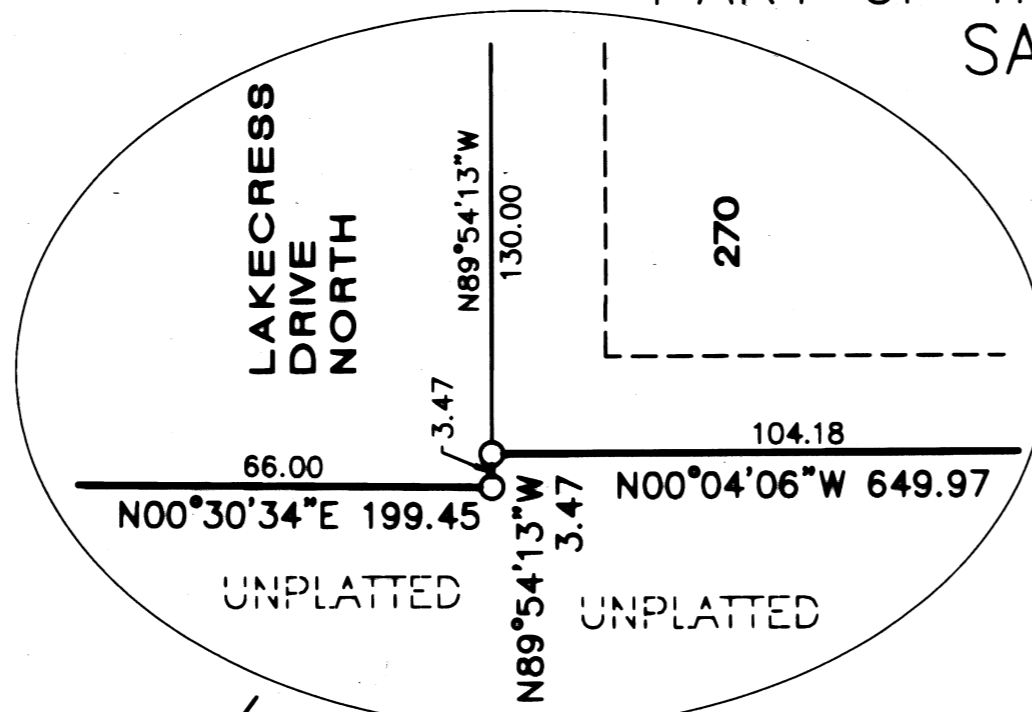
LAWNDALE FARMS NO. 5

PART OF THE NW 1/4 AND SW 1/4 OF FRACTIONAL SECTION 5, T12N-R4E
SAGINAW CHARTER TOWNSHIP, SAGINAW COUNTY, MICHIGAN

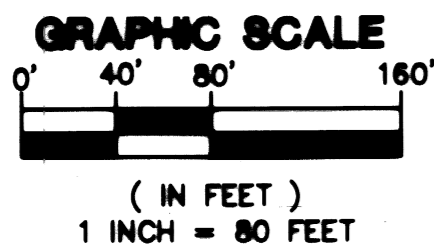
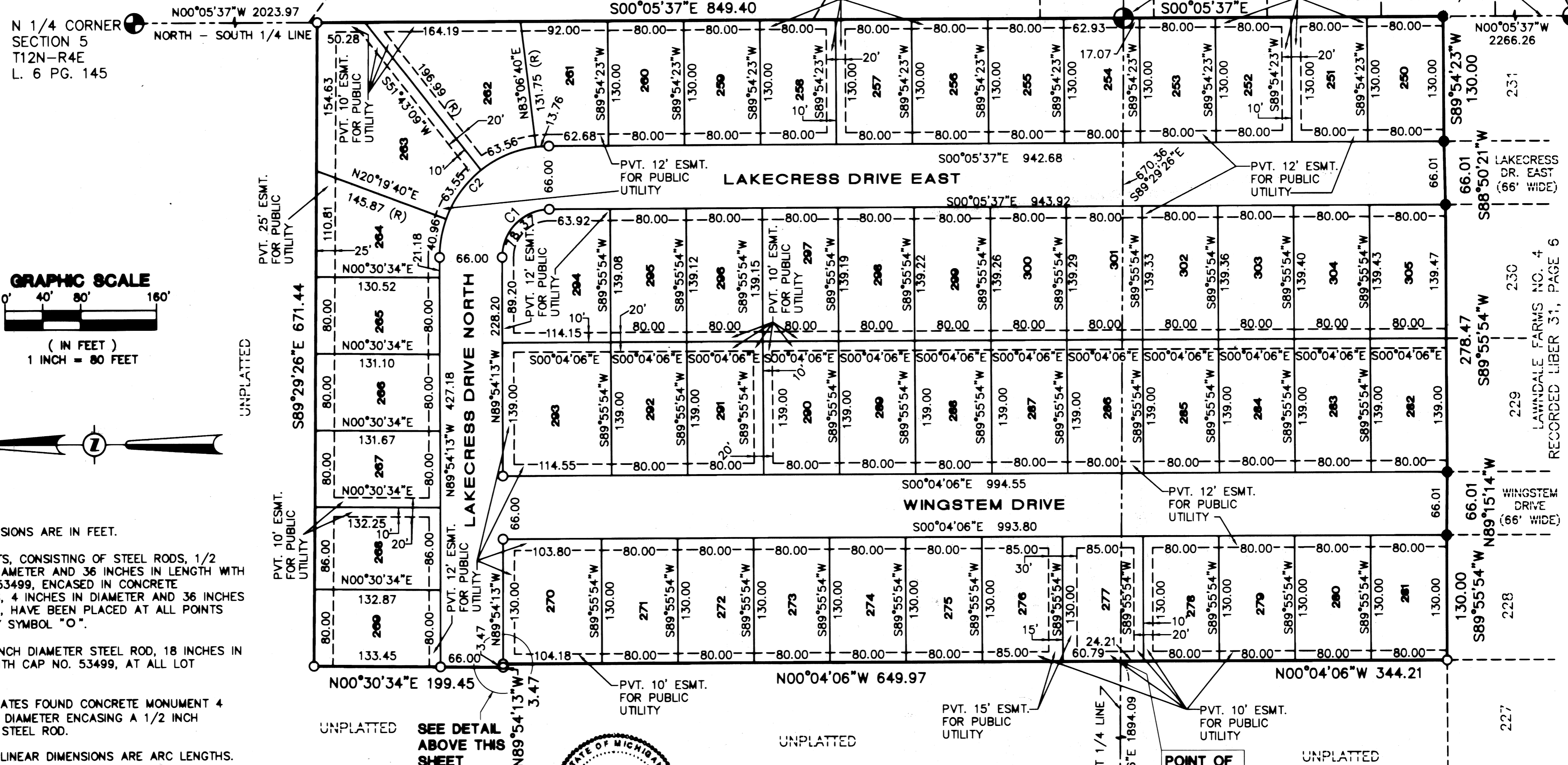
CURVE TABLE					
CURVE	RADIUS	ARC	CHORD	CHD. BRG.	DELTA ANGLE
C1	50.00	78.37	70.59	N44°59'55"W	89°48'36"
C2	116.00	181.83	163.78	N44°59'55"W	89°48'36"



LOCATION MAP
(NO SCALE)



DETAIL
SCALE: 1"=20'



LEGEND

ALL DIMENSIONS ARE IN FEET.

MONUMENTS, CONSISTING OF STEEL RODS, 1/2 INCH IN DIAMETER AND 36 INCHES IN LENGTH WITH CAP NO. 53499, ENCASED IN CONCRETE CYLINDERS, 4 INCHES IN DIAMETER AND 36 INCHES IN LENGTH, HAVE BEEN PLACED AT ALL POINTS SHOWN BY SYMBOL "O".

SET 1/2 INCH DIAMETER STEEL ROD, 18 INCHES IN LENGTH WITH CAP NO. 53499, AT ALL LOT CORNERS.

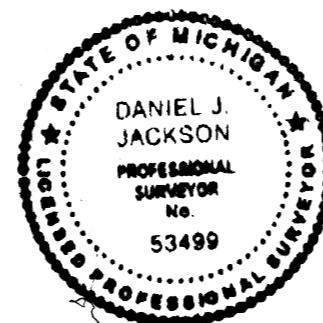
"●" INDICATES FOUND CONCRETE MONUMENT 4 INCHES IN DIAMETER ENCASED A 1/2 INCH DIAMETER STEEL ROD.

ALL CURVILINEAR DIMENSIONS ARE ARC LENGTHS.

(R) INDICATES RADIAL LINE, LINES NOT MARKED ARE NON RADIAL.

BEARINGS AS SHOWN ARE REFERENCED TO THE RECORDED PLAT OF LAWNDALE FARMS NO. 4 AS RECORDED IN LIBER 31 OF PLATS, PAGE 6.

Daniel Jackson
DANIEL J. JACKSON, PS #53499



W 1/4 CORNER
SECTION 5
T12N-R4E
L. 6 PG. 165

POINT OF
BEGINNING

LAWNDALE FARMS NO. 4
RECORDED LIBER 31, PAGE 6

227