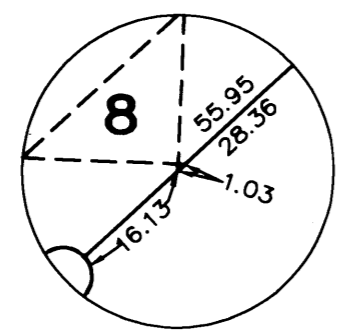


NORTHWOOD PLACE

PART OF THE SW 1/4 OF SECTION 10, T12N-R4E
SAGINAW TOWNSHIP, SAGINAW COUNTY, MICHIGAN

CURVE TABLE

NO.	RADIUS	ARC	CHORD	CHORD BEARING	DELTA
1	103.00	87.53	84.92	S71°39'14"W	48°41'33"
2	60.00	276.23	89.33	S84°35'05"E	263°47'05"
3	37.00	37.49	35.91	S66°58'18"E	58°03'24"

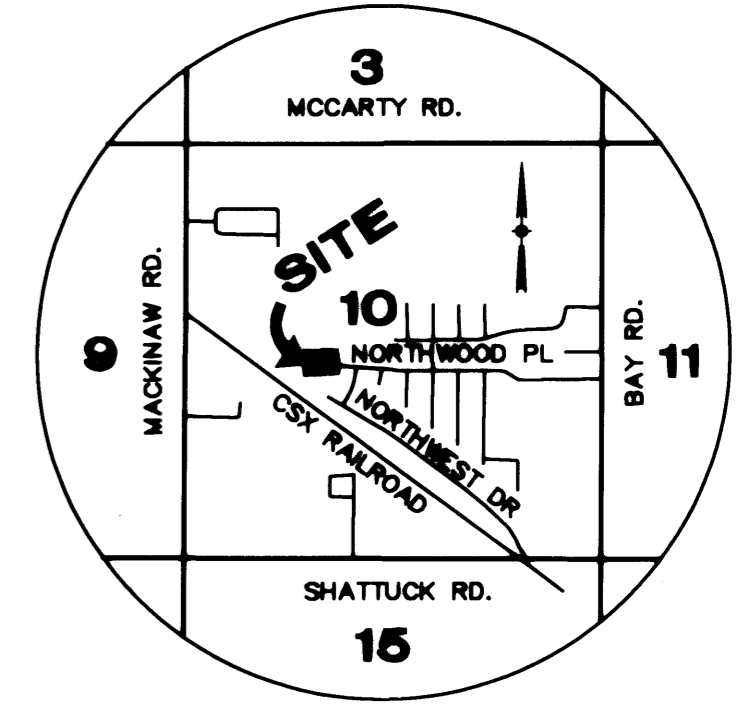


DETAIL
SCALE: 1"=20'

THIS PLAT IS SUBJECT TO RESTRICTIONS AS REQUIRED BY ACT 288 OF 1967, AS AMENDED ON CERTAIN LOTS WITH RESPECT TO THE REQUIREMENTS OF THE MICHIGAN DEPARTMENT OF ENVIRONMENTAL QUALITY WHICH ARE RECORDED IN LIBER _____ PAGE _____ OF RECORDS OF THIS COUNTY.

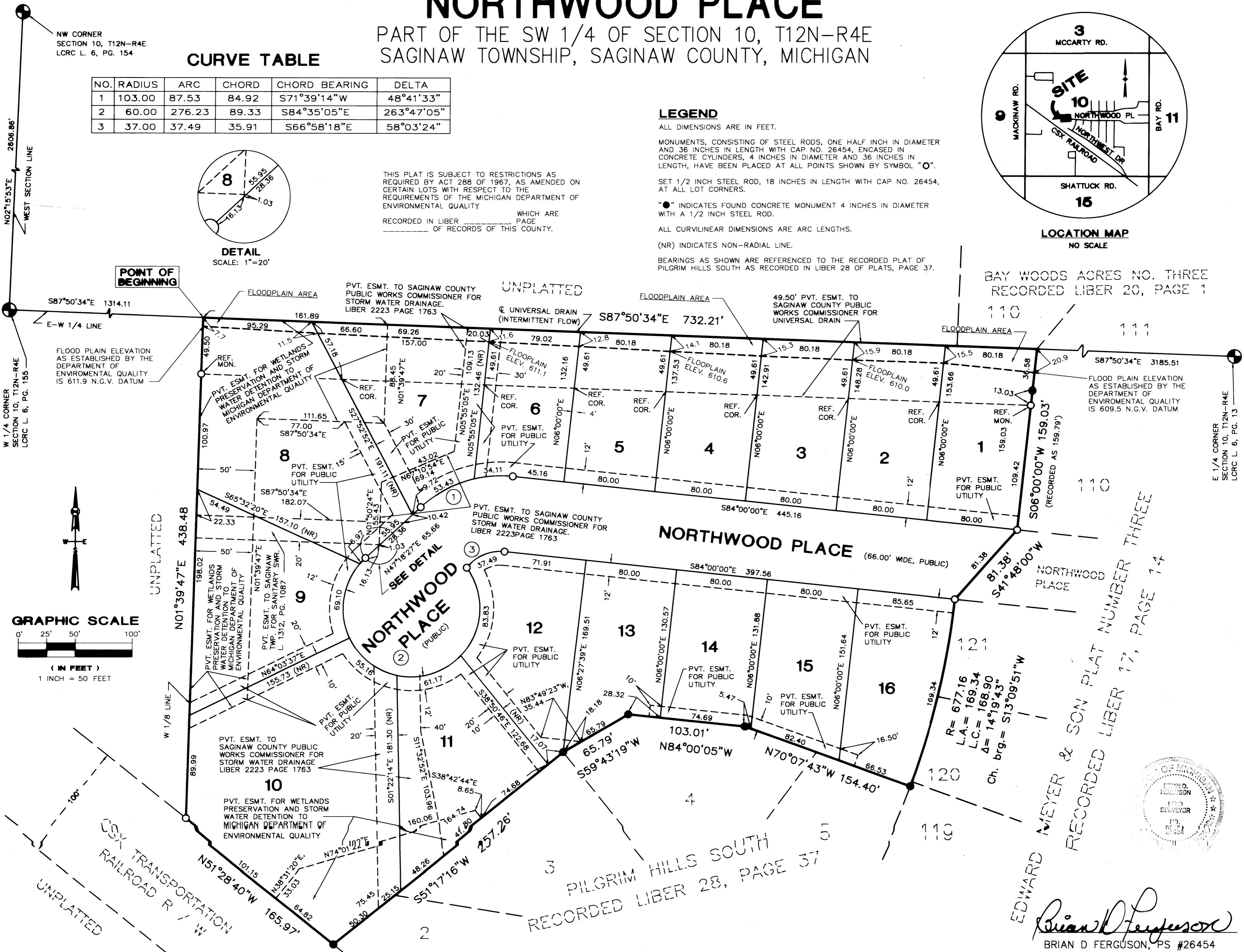
LEGEND

ALL DIMENSIONS ARE IN FEET.
MONUMENTS, CONSISTING OF STEEL RODS, ONE HALF INCH IN DIAMETER AND 36 INCHES IN LENGTH WITH CAP NO. 26454, ENCASED IN CONCRETE CYLINDERS, 4 INCHES IN DIAMETER AND 36 INCHES IN LENGTH, HAVE BEEN PLACED AT ALL POINTS SHOWN BY SYMBOL "O".
SET 1/2 INCH STEEL ROD, 18 INCHES IN LENGTH WITH CAP NO. 26454, AT ALL LOT CORNERS.
"O" INDICATES FOUND CONCRETE MONUMENT 4 INCHES IN DIAMETER WITH A 1/2 INCH STEEL ROD.
ALL CURVILINEAR DIMENSIONS ARE ARC LENGTHS.
(NR) INDICATES NON-RADIAL LINE.
BEARINGS AS SHOWN ARE REFERENCED TO THE RECORDED PLAT OF PILGRIM HILLS SOUTH AS RECORDED IN LIBER 28 OF PLATS, PAGE 37.



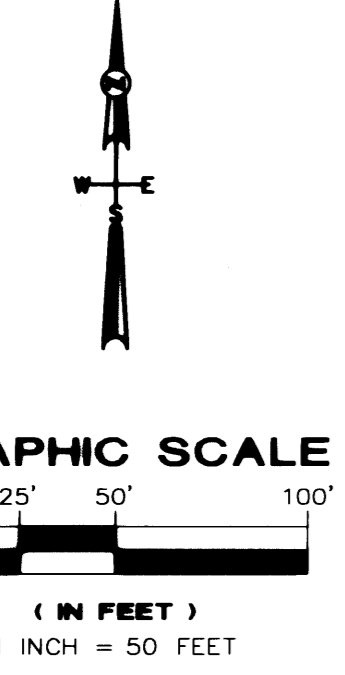
LOCATION MAP
NO SCALE

BAY WOODS ACRES NO. THREE
RECORDED LIBER 20, PAGE 1



FLOOD PLAIN ELEVATION AS ESTABLISHED BY THE DEPARTMENT OF ENVIRONMENTAL QUALITY IS 611.9 N.G.V. DATUM

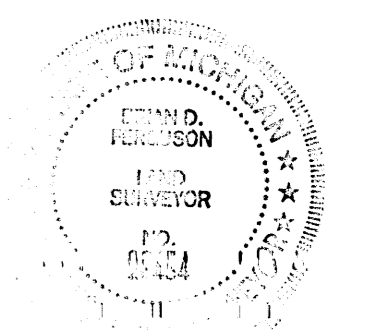
FLOOD PLAIN ELEVATION AS ESTABLISHED BY THE DEPARTMENT OF ENVIRONMENTAL QUALITY IS 609.5 N.G.V. DATUM



EDWARD MEYER & SON PLAT NUMBER THREE
RECORDED LIBER 17, PAGE 14

PILGRIM HILLS SOUTH
RECORDED LIBER 28, PAGE 37

CH. DATA:
R = 677.16
L.A. = 169.34
L.C. = 168.90
Δ = 14°19'43"
Ch. brg. = S13°09'51"W



Brian D. Ferguson
BRIAN D. FERGUSON, PS #26454