
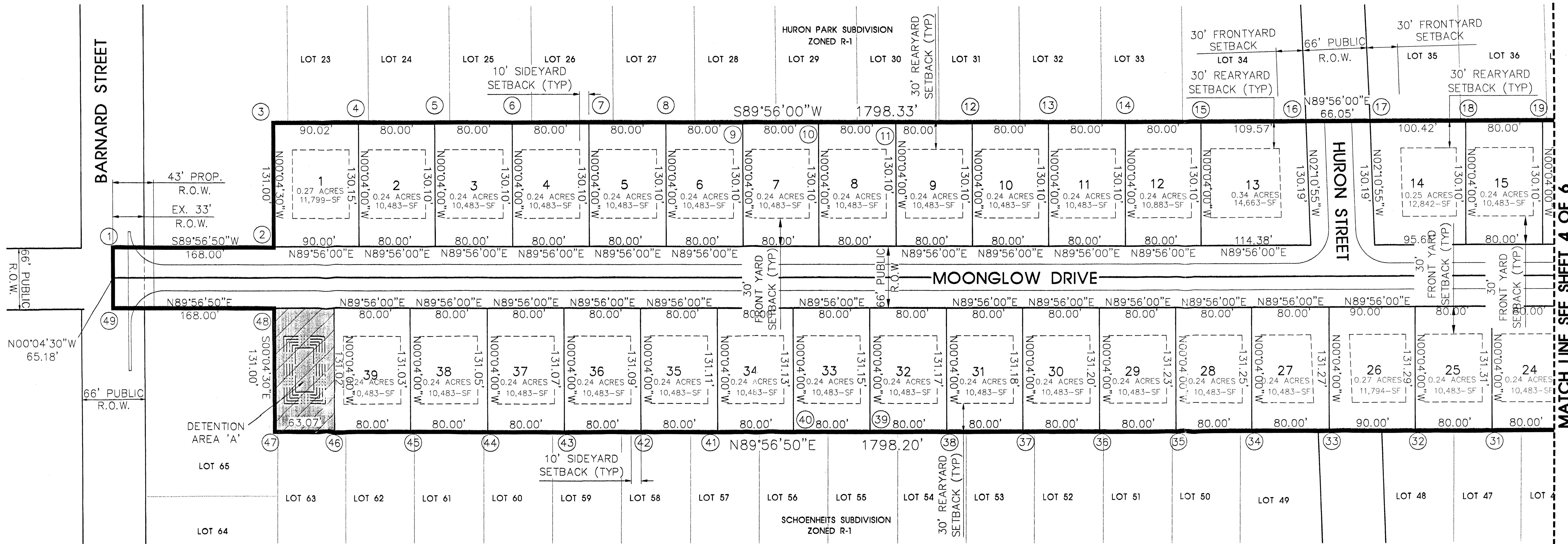
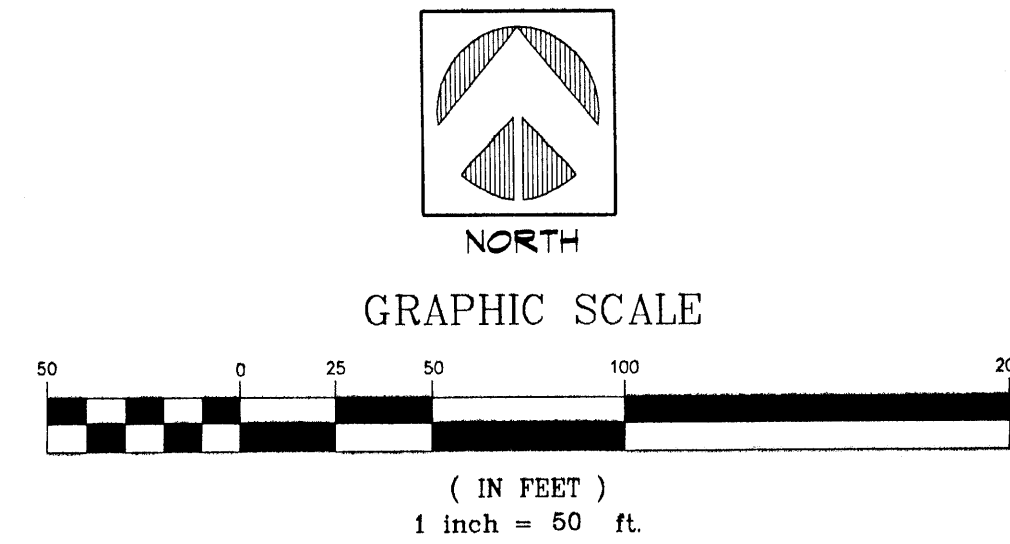


| LEGEND | |
|---|------------------------|
| 42 | LOT NUMBER |
|  | GENERAL COMMON ELEMENT |

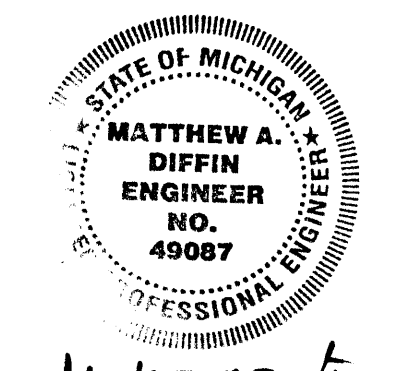
NOTE:
ALL AREAS SHOWN WITHIN THE LIMITS OF DEVELOPMENT
ARE LIMITED COMMON ELEMENTS EXCEPT FOR THOSE
AREAS DESIGNATED AS GENERAL COMMON ELEMENTS.



| PT# | Northing | Easting |
|-----|-----------|-----------|
| 1 | 5005.1964 | 5057.3847 |
| 2 | 5005.3511 | 5225.3846 |
| 3 | 5136.2570 | 5225.2133 |
| 4 | 5136.3618 | 5315.2339 |
| 5 | 5136.4548 | 5395.2338 |
| 6 | 5136.5479 | 5475.2338 |
| 7 | 5136.6410 | 5555.2337 |
| 8 | 5136.7341 | 5635.2336 |
| 9 | 5136.8272 | 5715.2336 |
| 10 | 5136.9086 | 5795.2335 |
| 11 | 5137.0133 | 5875.2335 |
| 12 | 5137.1064 | 5955.2334 |
| 13 | 5137.1995 | 6035.2334 |
| 14 | 5137.2926 | 6115.2333 |
| 15 | 5137.3857 | 6195.2333 |
| 16 | 5137.5132 | 6304.8033 |
| 17 | 5137.5900 | 6370.8483 |
| 18 | 5137.7069 | 6471.2642 |
| 19 | 5137.7999 | 6551.2642 |
| 20 | 5137.8930 | 6631.2641 |
| 21 | 5137.9861 | 6711.2418 |
| 22 | 5138.2957 | 6977.2946 |
| 23 | 5138.3495 | 7023.5390 |
| 24 | 4996.4889 | 7023.6762 |

| PT# | Northing | Easting |
|-----|-----------|-----------|
| 25 | 4810.8203 | 7023.8558 |
| 26 | 4810.7944 | 6995.6976 |
| 27 | 4810.6345 | 6818.7144 |
| 28 | 4810.5611 | 6738.7144 |
| 29 | 4810.4878 | 6658.7144 |
| 30 | 4810.4020 | 6578.7145 |
| 31 | 4810.3291 | 6498.7145 |
| 32 | 4810.2563 | 6418.7145 |
| 33 | 4810.1718 | 6328.7146 |
| 34 | 4810.0981 | 6248.7146 |
| 35 | 4810.0244 | 6168.7146 |
| 36 | 4809.9620 | 6088.7147 |
| 37 | 4809.8883 | 6008.7147 |
| 38 | 4809.8033 | 5928.7147 |
| 39 | 4809.7297 | 5848.7148 |
| 40 | 4809.6560 | 5768.7148 |
| 41 | 4809.5823 | 5688.7148 |
| 42 | 4809.5086 | 5608.7149 |
| 43 | 4809.4349 | 5528.7125 |
| 44 | 4809.3612 | 5448.7125 |
| 45 | 4809.2875 | 5368.7126 |
| 46 | 4809.2138 | 5288.7126 |
| 47 | 4809.1707 | 5225.6414 |
| 48 | 4940.1712 | 5225.4699 |
| 49 | 4940.0164 | 5057.4700 |

PROPOSED
11-18-04



Matthew A. Diffin
6-10-05

SITE PLAN

NOVA RIDGE
A SITE CONDOMINIUM COMMY
SAGINAW TOWNSHIP, SAGINAW COUNTY, MICHIGAN

Bartow & King Engineers

304 W. Wackerly, Suite 600
Midland, Michigan 48640
Tel. (989) 837-3280
Fax. (989) 837-3290

| | |
|----------|----------|
| DRAWN | MJK |
| CHKD. | MD |
| DATE | 11-17-04 |
| SHT. NO. | 3 OF 6 |