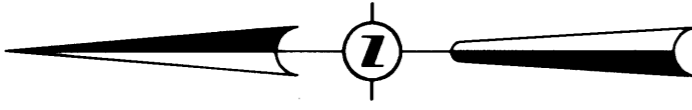


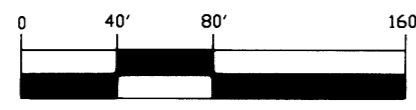
ORCHARD VIEW ESTATES NO. 2

PART OF THE NW 1/4 OF SECTION 29, T12N-R4E
SAGINAW TOWNSHIP, SAGINAW COUNTY, MICHIGAN

N 1/4 CORNER
SECTION 29
T12N-R4E
LCRC L. 6, PG. 125



GRAPHIC SCALE

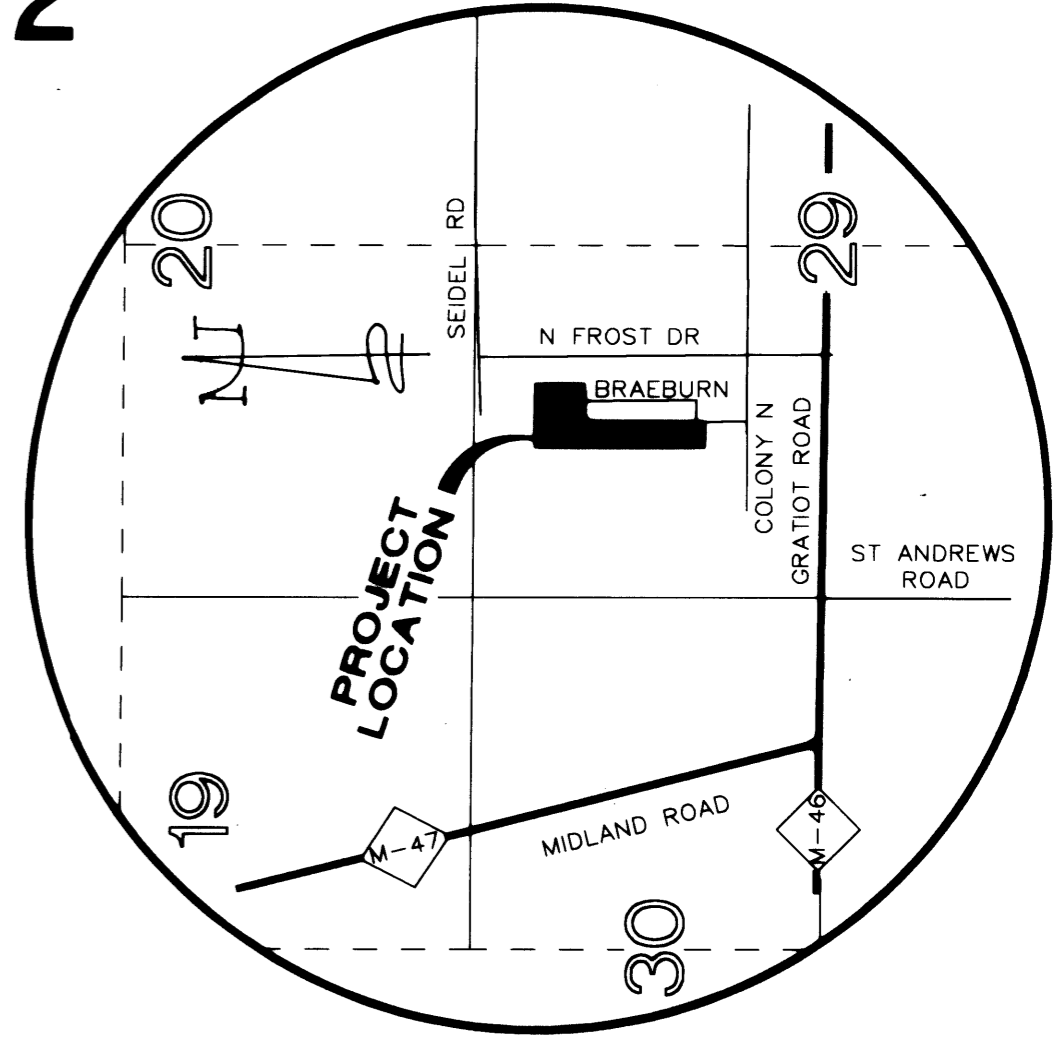


(IN FEET)
1 inch = 80 ft.

CURVE TABLE

NO.	RADIUS	ARC	CHORD	CHORD BEARING	DELTA
1	96.00	150.14	135.30	N45°06'13"W	89°36'17"
2	30.00	46.92	42.28	N45°06'13"W	89°36'17"
3	96.00	151.46	136.23	N44°53'47"E	90°23'43"
4	30.00	47.33	42.57	N44°53'47"E	90°23'43"
5	96.00	150.13	135.30	N45°06'13"W	89°36'17"
6	30.00	46.92	42.28	N45°06'13"W	89°36'17"

GARDEN VIEW SUBDIVISION
RECORDED LIBER 14, PAGE 39



LOCATION MAP

NOT TO SCALE

THIS PLAT IS SUBJECT TO RESTRICTIONS AS
REQUIRED BY ACT 288 OF 1967, AS AMENDED ON
CERTAIN LOTS WITH RESPECT TO THE
REQUIREMENTS OF THE MICHIGAN DEPARTMENT OF
ENVIRONMENTAL QUALITY AND/OR THE MICHIGAN
DEPARTMENT OF PUBLIC HEALTH, WHICH ARE
RECORDED IN LIBER _____ PAGE
_____ OF RECORDS OF THIS COUNTY.



Brian D. Ferguson
BRIAN D FERGUSON PS #26454

ORCHARD VIEW ESTATES NO. 1
RECORDED LIBER 24, PAGE 48

N89°54'13"W 983.03'

S89°54'13"E 2632.68'

PRIVATE EASEMENT TO
CONSUMERS ENERGY
CO. L. 1560, PG. 522
& L. 1562, PG. 804

POINT OF
BEGINNING

FLOODPLAIN CONTOUR AS
ESTABLISHED BY THE
DEPARTMENT OF ENVIRONMENTAL
QUALITY, 599.4 N.G.V. DATUM

NW CORNER
SECTION 29
T12N-R4E
LCRC L. 6, PG. 123

LEGEND

- ALL DIMENSIONS ARE IN FEET.
- MONUMENTS, CONSISTING OF STEEL RODS, ONE HALF INCH IN DIAMETER AND 36 INCHES IN LENGTH WITH CAP NO. 26454, ENCASED IN CONCRETE CYLINDERS, 4 INCHES IN DIAMETER AND 36 INCHES IN LENGTH, HAVE BEEN PLACED AT ALL POINTS SHOWN BY SYMBOL "O".
- SET 1/2 INCH STEEL ROD, 18 INCHES IN LENGTH WITH CAP NO. 26454, AT ALL LOT CORNERS.
- "●" INDICATES FOUND CONCRETE MONUMENT 4 INCHES IN DIAMETER WITH A 1/2 INCH STEEL ROD.
- ALL CURVILINEAR DIMENSIONS ARE ARC LENGTHS.
- (NR) INDICATES NON-RADIAL LINE.
- (R) INDICATES RADIAL LINE.
- BEARINGS AS SHOWN ARE REFERENCED TO THE RECORDED PLAT OF ORCHARD VIEW ESTATES NO. 1 AS RECORDED IN LIBER 24 OF PLATS, PAGE 48.

PVT. ESMT. TO SAGINAW COUNTY
PUBLIC WORKS COMMISSIONER
L. 2220 PG. 515

FLOODPLAIN CONTOUR AS
ESTABLISHED BY THE
DEPARTMENT OF ENVIRONMENTAL
QUALITY, 599.4 N.G.V. DATUM

UNPLATTED

ORCHARD VIEW ESTATES NO. 1
RECORDED LIBER 24, PAGE 48