

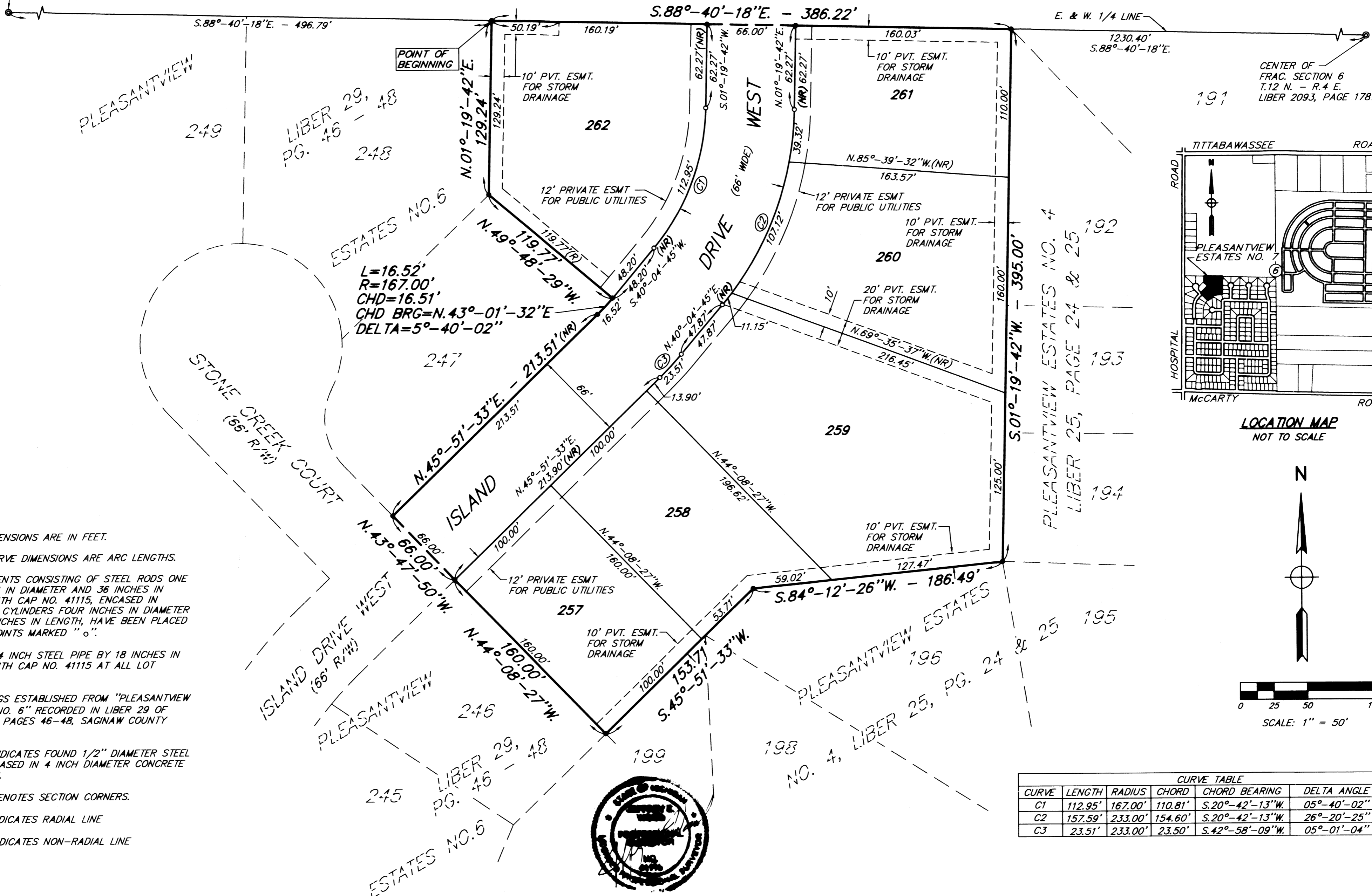
PLEASANTVIEW ESTATES NO. 7

PART OF THE FRACTIONAL SOUTHWEST 1/4 OF FRACTIONAL SECTION 6, T.12 N. - R.4 E.,
SAGINAW TOWNSHIP, SAGINAW COUNTY, MICHIGAN

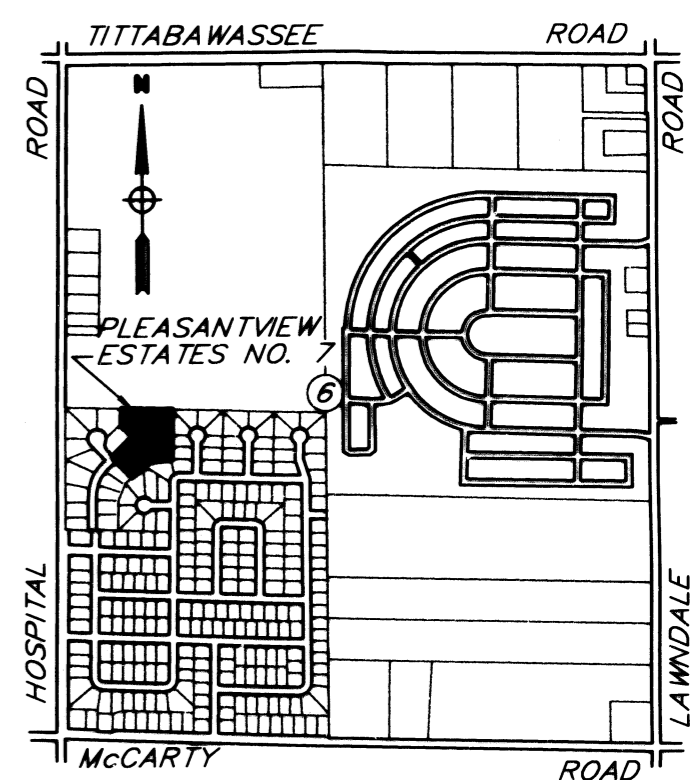
UNPLATTED

W. 1/4 CORNER OF
FRAC. SECTION 6
T.12 N. - R.4 E.
LIBER 1887, PAGE 1015

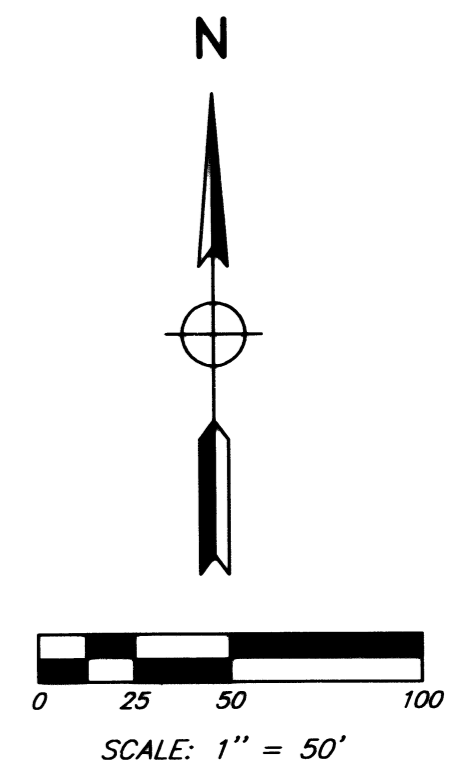
CENTER OF
FRAC. SECTION 6
T.12 N. - R.4 E.
LIBER 2093, PAGE 1787



$L=16.52'$
 $R=167.00'$
 $CHD=16.51'$
 $CHD BRG=N.43^{\circ}-01'-32''E$
 $DELTA=5^{\circ}-40'-02''$



- LEGEND**
- 1-ALL DIMENSIONS ARE IN FEET.
 - 2-ALL CURVE DIMENSIONS ARE ARC LENGTHS.
 - 3-MONUMENTS CONSISTING OF STEEL RODS ONE HALF INCH IN DIAMETER AND 36 INCHES IN LENGTH WITH CAP NO. 41115, ENCASED IN CONCRETE CYLINDERS FOUR INCHES IN DIAMETER AND 36 INCHES IN LENGTH, HAVE BEEN PLACED AT ALL POINTS MARKED "o".
 - 4-SET 3/4 INCH STEEL PIPE BY 18 INCHES IN LENGTH WITH CAP NO. 41115 AT ALL LOT CORNERS.
 - 5-BEARINGS ESTABLISHED FROM "PLEASANTVIEW ESTATES NO. 6" RECORDED IN LIBER 29 OF PLATS ON PAGES 46-48, SAGINAW COUNTY RECORDS.
 - 6-"o" INDICATES FOUND 1/2" DIAMETER STEEL RODS ENCASED IN 4 INCH DIAMETER CONCRETE CYLINDERS.
 - 7-"o" DENOTES SECTION CORNERS.
 - 8-(R) INDICATES RADIAL LINE
 - 9-(NR) INDICATES NON-RADIAL LINE



CURVE TABLE					
CURVE	LENGTH	RADIUS	CHORD	CHORD BEARING	DELTA ANGLE
C1	112.95'	167.00'	110.81'	S.20°-42'-13"W	05°-40'-02"
C2	157.59'	233.00'	154.60'	S.20°-42'-13"W	26°-20'-25"
C3	23.51'	233.00'	23.50'	S.42°-58'-09"W	05°-01'-04"

