

ABBE ESTATES

PART OF THE NORTHWEST 1/4, SECTION 8, T.12N.-R.4E.
 SAGINAW TOWNSHIP, SAGINAW COUNTY, MICHIGAN

LEGEND

- 1 - ALL DIMENSIONS ARE GIVEN IN FEET
- 2 - CONCRETE MONUMENTS HAVE BEEN PLACED AT ALL POINTS MARKED "O"
- 3 - SET SOLID IRON BARS 1/2" IN DIA. BY 18" IN LENGTH AT ALL LOT CORNERS
- 4 - BEARINGS WERE ESTABLISHED FROM HUNTINGTON WOODS ESTATES RECORDED IN LIBER 17 PAGES 41 AND 42

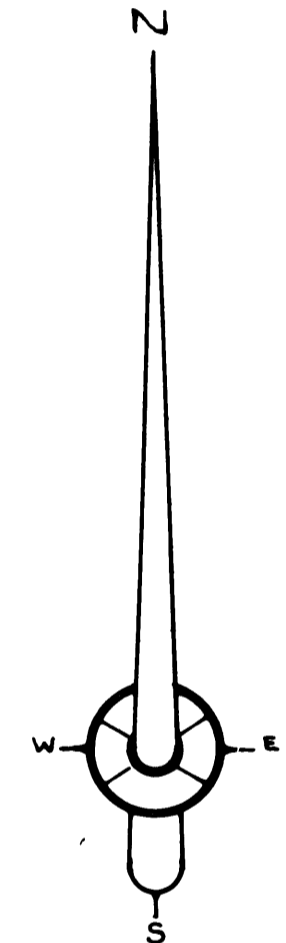
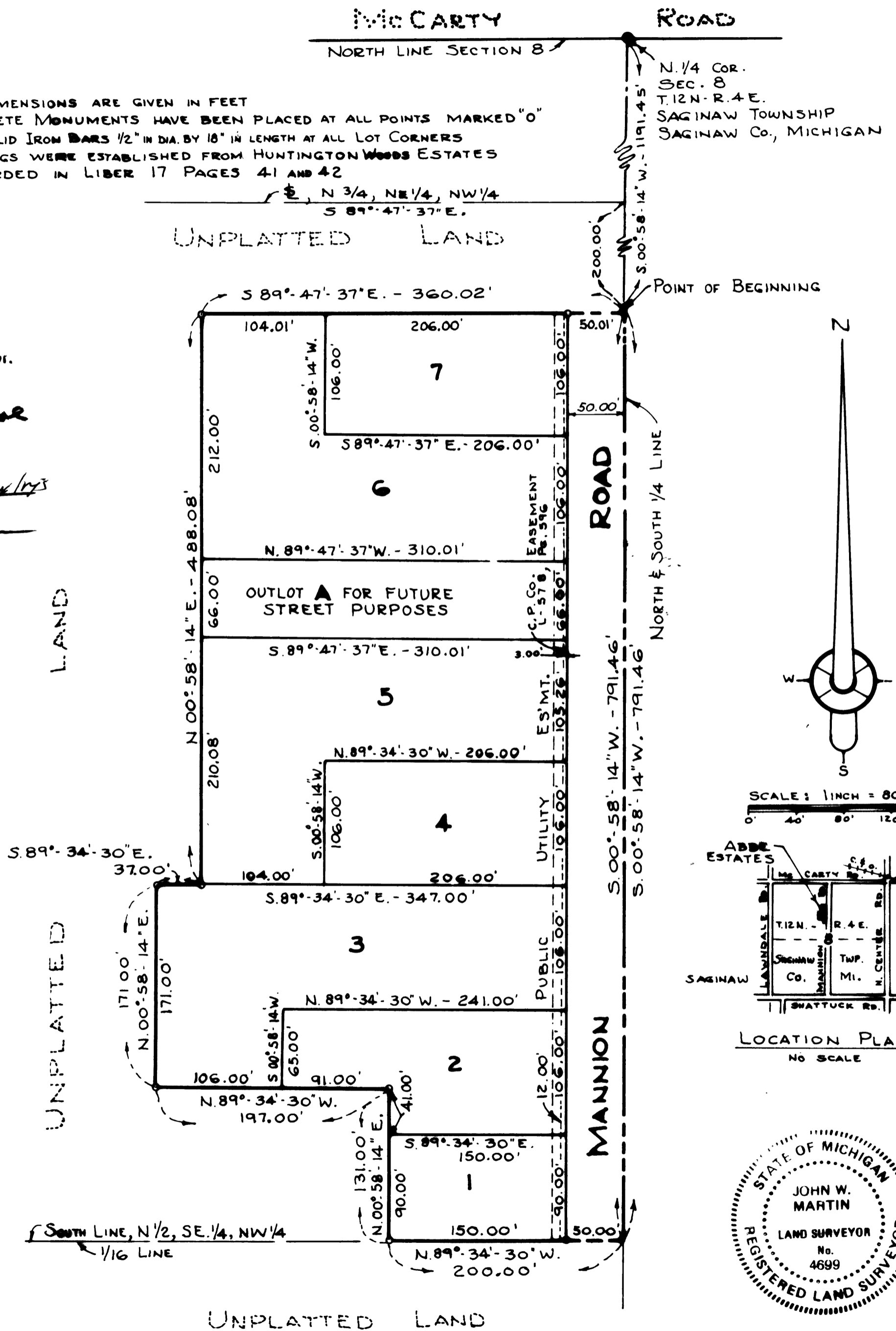
CERTIFIED TRUE COPY OF RECORDED PLAT

Loren E. Monroe

LOREN E. MONROE
 STATE TREASURER

Richard E. Lomas
 Richard E. Lomas, Plat Examiner

DATE *Jan 24, 1980*



SCALE: 1 INCH = 80 FEET
 0 40 80 120 160

