

# ALLEN PARK "F"

A PART OF E. 1/2 OF E. 1/2 OF S.W. 1/4 OF SECTION 20, T.12N.-R.4E.  
SAGINAW TOWNSHIP - SAGINAW COUNTY - MICHIGAN.

SCALE: 1 INCH = 100 FEET  
0 50 100 200 300 400  
ALL DIMENSIONS ARE GIVEN IN FEET AND DECIMALS THEREOF

SPICER ENGINEERING COMPANY  
SAGINAW, MICHIGAN  
1961

### DEDICATION

KNOW ALL MEN BY THESE PRESENTS, That we, Felix Wolderzak and Alma Wolderzak, his wife, as proprietors, have caused the land embraced in the annexed plat to be surveyed, laid out and platted to be known as ALLEN PARK "F", A Part Of E. 1/2 Of E. 1/2 Of S.W. 1/4 Of Section 20, T.12 N.-R.4 E., Saginaw Township - Saginaw County - Michigan, and that the Drives as shown on said plat are hereby dedicated to the use of the public, Excepting however, from this dedication land designated "Two Foot Reservation," such land to be dedicated automatically for street purposes at such time as street extensions adjacent thereto are dedicated in adjoining property.

Signed and Sealed in the Presence Of

Felix Wolderzak (L.S.)  
Felix Wolderzak

Estelle M. Bryan  
Janet Marsh

Alma Wolderzak (L.S.)  
Alma Wolderzak

### ACKNOWLEDGMENT

STATE OF MICHIGAN)  
County of Saginaw) ss.

On this 22nd day of May, 1961, before me, a Notary Public in and for said County, appeared Felix Wolderzak and Alma Wolderzak, his wife, known to me to be the persons who executed the above dedication and acknowledged the same to be their free act and deed.

My Commission Expires May 15, 1962 Notary Public, Saginaw County, Michigan

### DESCRIPTION

The land embraced in the annexed plat of ALLEN PARK "F", A Part Of E. 1/2 Of E. 1/2 Of S.W. 1/4 Of Section 20, T.12 N.-R.4 E., Saginaw Township - Saginaw County - Michigan, is described as follows: Commencing at a point on the South Section line 329.14 feet N.89°-54'-15"W. along said line from the South 1/4 post of said Section 20; thence continuing N.89°-54'-15"W. along said line 329.14 feet to the West line of the East 1/2 of the Southwest 1/4 of said Section 20; thence N.00°-20'-45"W. along said line 1312.08 feet to the Northwest corner of the recorded plat of Allen Park "E"; thence S.00°-22'-00"E. along the West line of the recorded plats of Allen Park "E" and "D" 1312.44 feet to the point of beginning. This plat contains 26 Lots numbered consecutively from 131 to 156 inclusive.

### SURVEYOR'S CERTIFICATE

I hereby certify that the plat hereon delineated is a correct one and that permanent metal monuments consisting of bars not less than one-half inch in diameter and 36 inches in length, or shorter bars of not less than one-half inch in diameter lapped over each other at least 6 inches with an over-all length of not less than 36 inches, encased in a concrete cylinder at least 4 inches in diameter and 36 inches in the boundaries of the land platted, at all intersections of streets, and at the intersections of streets with the boundaries of the plat as shown on said plat.

Clifford H. Spicer  
Clifford H. Spicer-Registered Land Surveyor

### CERTIFICATE OF APPROVAL BY CITY PLANNING COMMISSION

This plat was approved by the City Planning Commission of the City of Saginaw, Michigan, at a meeting held on the 23rd day of MAY, 1961.

Malcolm W. Whitford  
Malcolm W. Whitford Secretary

### COUNTY TREASURER'S CERTIFICATE RELATING TO TAXES (Sec. 135, Act 206, 1893 as amended - Sec. 4134, C. L. 1915.) Office of County Treasurer, Saginaw County

I hereby certify, that there are 70 tax liens or titles held by the State on the land described hereon, and that there are 11 tax liens or titles held by individuals on said lands, for the five years preceding the 25th day of May, 1961, and that the taxes for said period of five years are paid, as shown by the records of this office.

This certificate does not apply to taxes, if any, now in process of collection by township, city or village collecting officers.

Raymond L. Dankers  
Raymond L. Dankers County Treasurer

### CERTIFICATE OF MUNICIPAL APPROVAL

This plat was approved by the Township Board of the Township of Saginaw at a meeting held on the fifth day of June, 1961.

Richard Stroebel  
Richard Stroebel Township Clerk

### CERTIFICATE OF APPROVAL BY BOARD OF COUNTY ROAD COMMISSIONERS

This plat has been examined and was approved on the 13th day of June, 1961 by the Saginaw County Board of Road Commissioners.

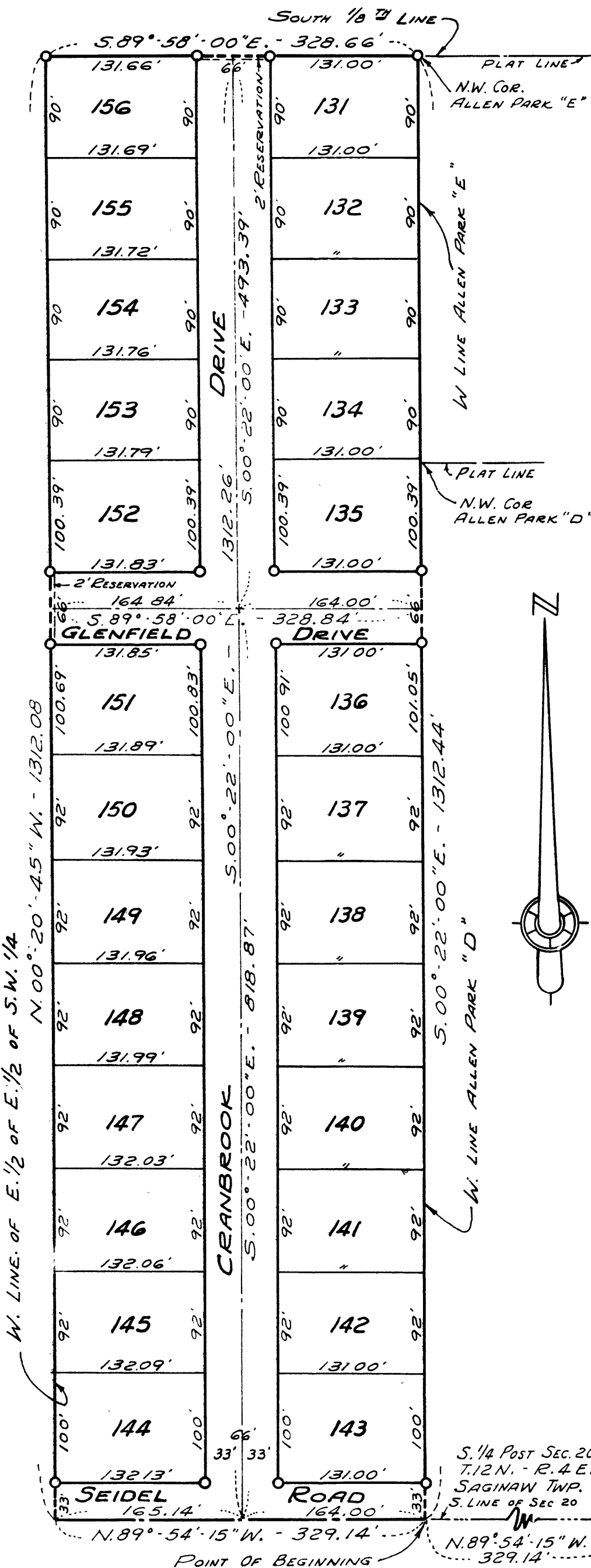
The Board of County Road Commissioners of Saginaw County, Michigan, assumes no responsibility for the improvement or maintenance of the Roads or Streets shown on this Plat until such time as the following conditions have been met and approved by this Board.

All Roads and Streets are to be graded and drained with necessary drainage structures installed and a roadway surface, which shall consist of crushed stone or natural gravel conforming to Michigan State Highway Department Specifications 21A. The surface shall have a minimum width of 18 feet and a compacted thickness of 6 inches. When crushed stone is used the top 2 inches shall be 21A with screenings added to provide a dense wearing course.

William M. Trim  
William M. Trim Chairman

Harold H. Bauer  
Harold H. Bauer Member

John F. McInnis  
John F. McInnis Member



I hereby certify this copy is a true copy of map or plat forwarded the Register of deeds for recording.

Date June 22, 1961  
FILED IN AUDITOR GENERAL'S DEPT.  
Date June 28, 1961  
EXAMINED AND APPROVED  
Date June 23, 1961

Richard E. Somay  
REGISTER OF DEEDS

### COPIES

Register's Office  
Saginaw County, Mich.

Plat of  
Allen Park "F"

was Recorded this 23rd day of

June, A.D., 1961 at 3:30 o'clock

10 M. in Liber 13 of plates

on Page 24  
Walter D. Stroebel  
Register of Deeds

### CERTIFICATE OF APPROVAL BY THE COUNTY PLAT BOARD

This plat was approved by the County Plat Board of Saginaw County, Michigan, this 14th day of June, 1961.

Walter D. Stroebel  
Walter D. Stroebel, Register of Deeds-Chairman

Benj. G. Wacker Auditor

William H. Baughman Auditor

John H. Deibel Auditor

H. J. Dietrich, Saginaw County Drain Commissioner