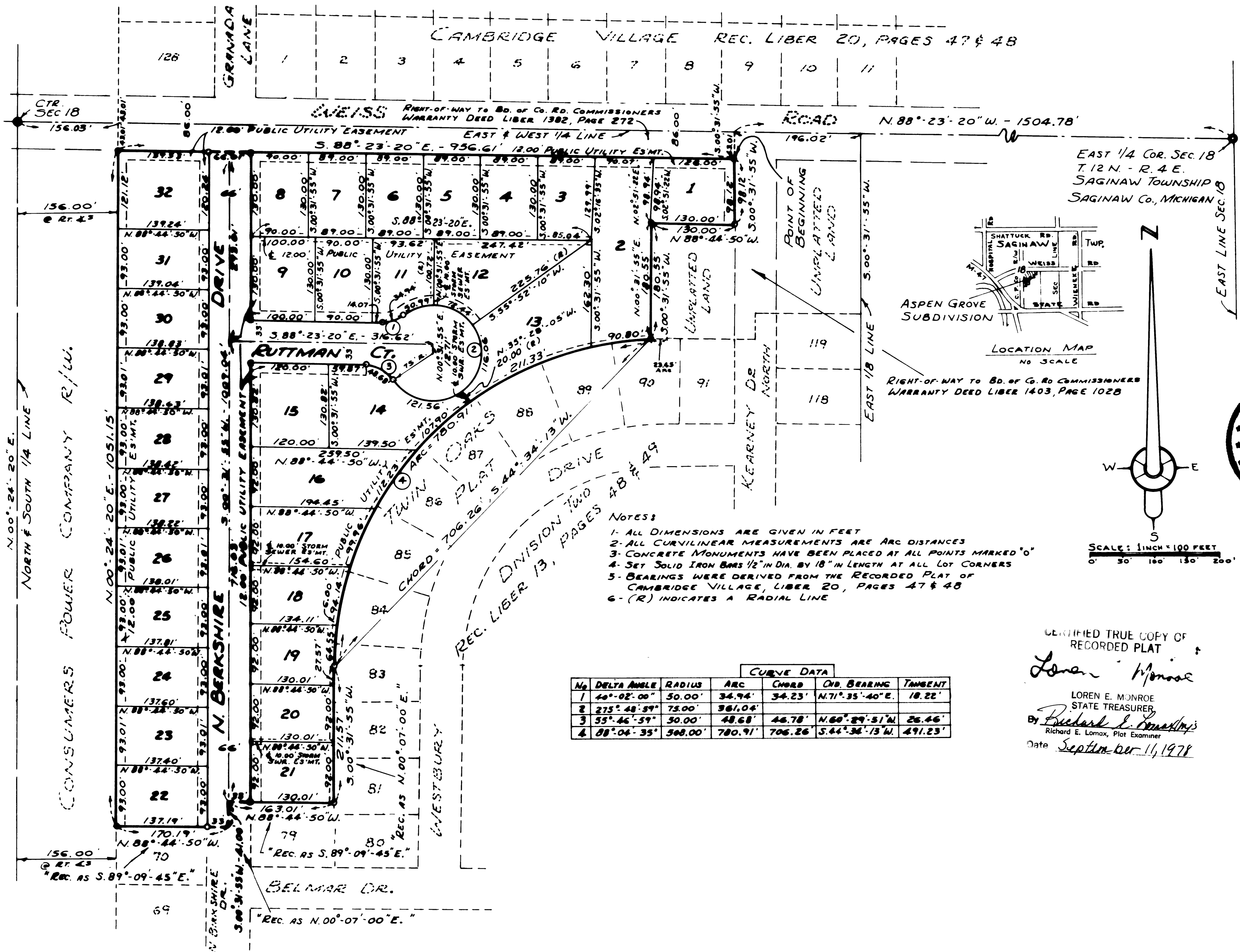


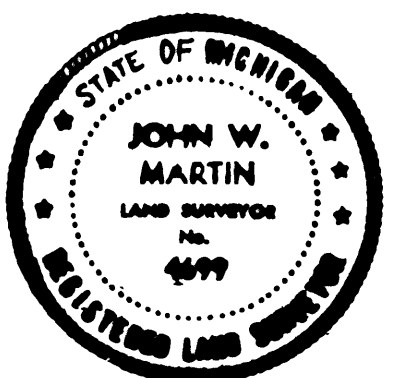
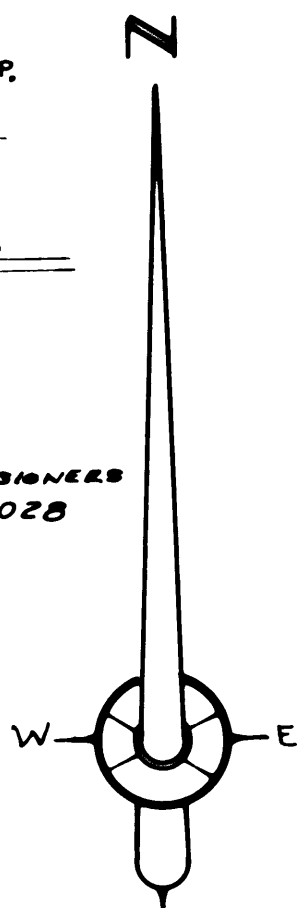
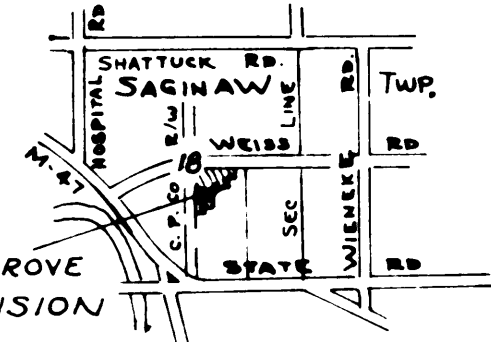
ASPEN GROVE SUBDIVISION

PART OF THE NORTHWEST 1/4 OF THE SOUTHEAST 1/4 OF FRACTIONAL SECTION 18, T.12N.-R.4E.
SAGINAW TOWNSHIP, SAGINAW COUNTY, MICHIGAN



- NOTES:
- 1- ALL DIMENSIONS ARE GIVEN IN FEET
 - 2- ALL CURVILINEAR MEASUREMENTS ARE ARC DISTANCES
 - 3- CONCRETE MONUMENTS HAVE BEEN PLACED AT ALL POINTS MARKED "O"
 - 4- SET SOLID IRON BARS 1/2" IN DIA. BY 18" IN LENGTH AT ALL LOT CORNERS
 - 5- BEARINGS WERE DERIVED FROM THE RECORDED PLAT OF CAMBRIDGE VILLAGE, LIBER 20, PAGES 47 & 48
 - 6- (R) INDICATES A RADIAL LINE

CURVE DATA						
No.	DELTA ANGLE	RADIUS	ARC	CHORD	CHD. BEARING	TANGENT
1	40°-02'-00"	50.00'	34.94'	34.23'	N.71°-35'-40"E.	18.22'
2	275°-48'-59"	75.00'	361.04'	46.78'	N.60°-29'-51"W.	26.46'
3	55°-46'-59"	50.00'	48.68'	46.78'	N.60°-29'-51"W.	26.46'
4	88°-04'-35"	500.00'	780.91'	706.26'	S.44°-34'-13"W.	491.23'



CERTIFIED TRUE COPY OF RECORDED PLAT

Loren E. Monroe
LOREN E. MONROE
STATE TREASURER

By *Richard E. Lomax*
Richard E. Lomax, Plat Examiner

Date *September 11, 1978*