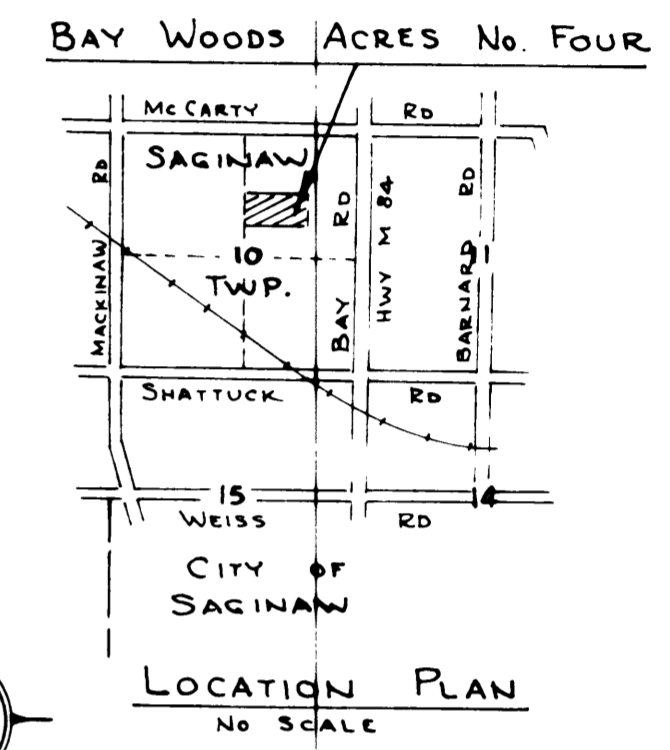
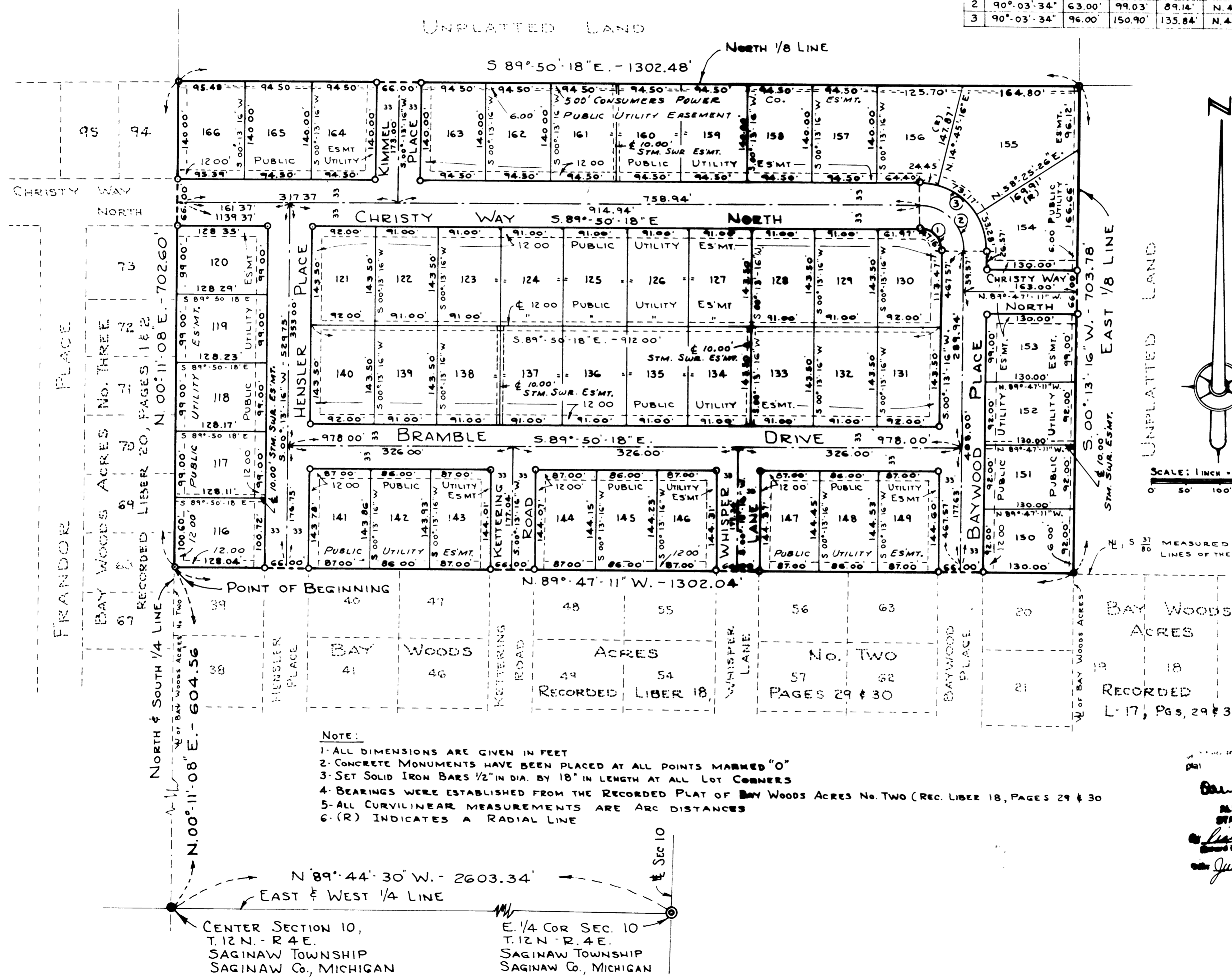


BAY WOODS ACRES No. FOUR

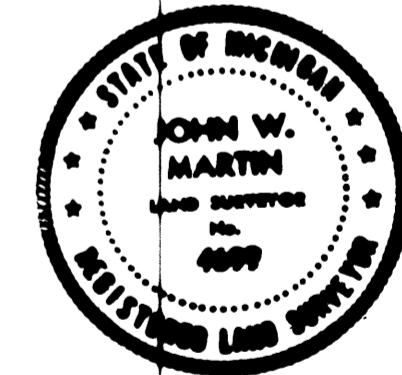
PART OF THE NORTHEAST 1/4 OF SECTION 10, T.12N. - R.4E.
SAGINAW TOWNSHIP, SAGINAW COUNTY, MICHIGAN

CURVE DATA						
No	DELTA ANGLE	RADIUS	ARC	CHORD	CHORD BEARING	TAN.
1	90° 03' 34"	30.00'	47.16'	42.45'	N. 44° 48' 31" W.	30.03'
2	90° 03' 34"	63.00'	99.03'	89.14'	N. 44° 48' 31" W.	63.07'
3	90° 03' 34"	96.00'	150.90'	135.84'	N. 44° 48' 31" W.	96.10'



SCALE: 1 INCH = 100 FEET
0 50' 100' 150' 200'

MEASURED ON EAST AND WEST LINES OF THE S 1/2, NE 1/4 Sec 10



- NOTE:
- 1- ALL DIMENSIONS ARE GIVEN IN FEET
 - 2- CONCRETE MONUMENTS HAVE BEEN PLACED AT ALL POINTS MARKED "O"
 - 3- SET SOLID IRON BARS 1/2" IN DIA. BY 18" IN LENGTH AT ALL LOT CORNERS
 - 4- BEARINGS WERE ESTABLISHED FROM THE RECORDED PLAT OF BAY WOODS ACRES No. TWO (REC. LIBER 18, PAGES 29 & 30)
 - 5- ALL CURVILINEAR MEASUREMENTS ARE ARC DISTANCES
 - 6- (R) INDICATES A RADIAL LINE

CENTER SECTION 10,
T.12N. - R.4E.
SAGINAW TOWNSHIP
SAGINAW Co., MICHIGAN

E. 1/4 COR SEC. 10
T.12N. - R.4E.
SAGINAW TOWNSHIP
SAGINAW Co., MICHIGAN

ALISON GREEN
STATE TREASURER

June 15, 1978