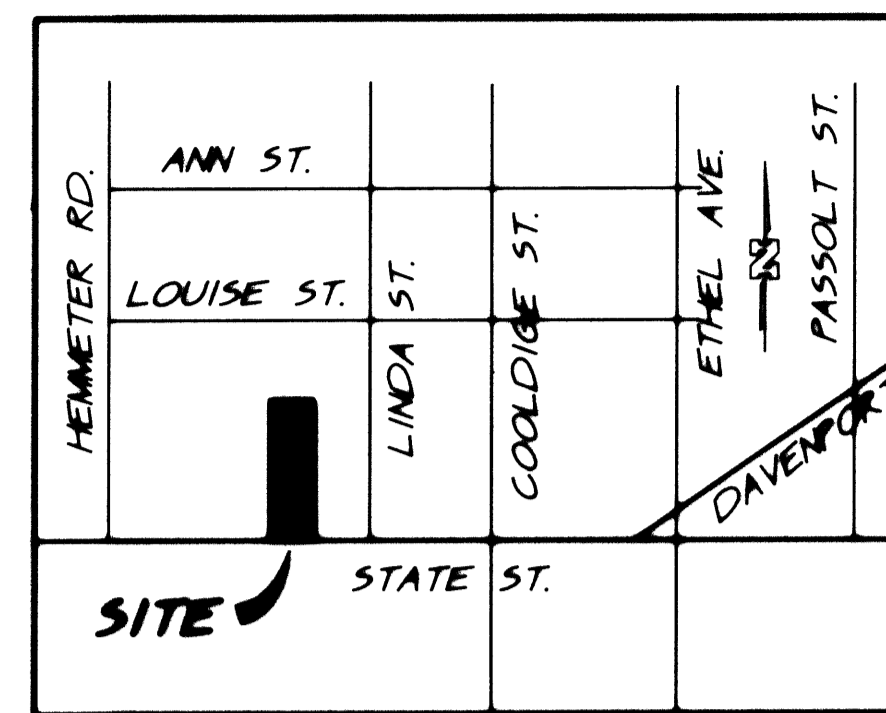


UTILITY LOCATIONS

ELECTRIC AND TELEPHONE - PER VISUAL INSPECTION BY LEDY AND ASSOCIATES, INC., AUGUST 9, 1993

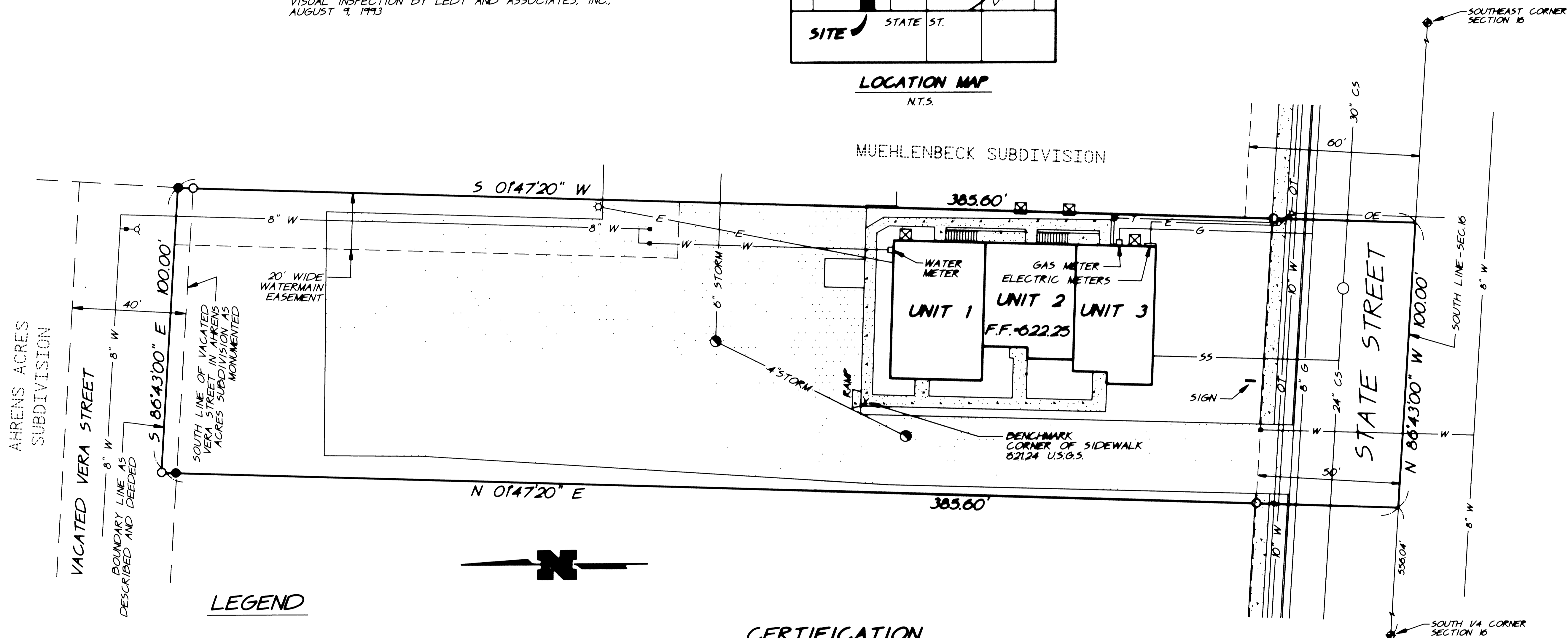
GAS - PER CONSUMERS POWER COMPANY PLANS AND VISUAL INSPECTION BY LEDY AND ASSOCIATES, INC., AUGUST 9, 1993

WATER, STORM, SANITARY - SAGINAW TOWNSHIP DEPARTMENT OF PUBLIC WORKS PLANS AND VISUAL INSPECTION BY LEDY AND ASSOCIATES, INC., AUGUST 9, 1993



LOCATION MAP

N.T.S.



LEGEND

- 8" GAS — UNDERGROUND GAS LINE W/SIZE
- E — UNDERGROUND ELECTRIC
- T — UNDERGROUND TELEPHONE
- W — WATER LINE, VALVE BOX + HYDRANT
- STORM — STORM SEWER
- CS — COMBINED SANITARY AND STORM W/MANHOLE
- OT — OVERHEAD TELEPHONE WIRES
- OE — OVERHEAD ELECTRIC WIRES
- ☆ LIGHT POLE
- ☒ AIR CONDITIONING UNIT
- ▭ ASPHALT
- ▭ CONCRETE

CERTIFICATION

I, DUANE F. LEDY, PROFESSIONAL SURVEYOR OF THE STATE OF MICHIGAN, HEREBY CERTIFY:

THAT THE SUBDIVISION PLAN KNOWN AS SAGINAW COUNTY SUBDIVISION PLAN NO. 34 SHOWN ON THE ACCOMPANYING DRAWING, REPRESENTS A SURVEY ON THE GROUND MADE UNDER MY DIRECTION AND THAT THERE ARE NO EXISTING ENCROACHMENTS UPON THE LANDS AND PROPERTY EXCEPT AS SHOWN.

THAT THE REQUIRED MONUMENTS AND IRON MARKERS HAVE BEEN LOCATED IN THE GROUND AS REQUIRED BY RULES PROMULGATED UNDER SECTION 142 OF ACT NUMBER 59 OF THE PUBLIC ACTS OF 1978.

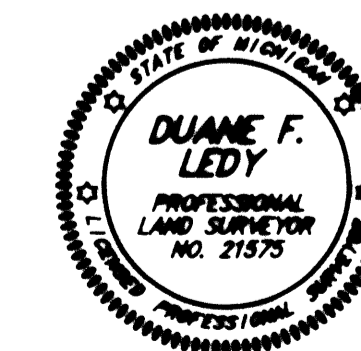
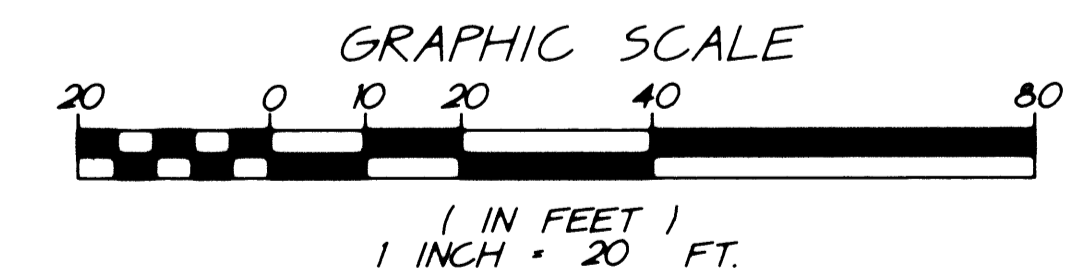
THAT THE ACCURACY OF THIS SURVEY IS WITHIN THE LIMITS REQUIRED BY THE RULES PROMULGATED UNDER SECTION 142 OF ACT NUMBER 59 OF THE PUBLIC ACTS OF 1978.

THAT THE BEARINGS AS SHOWN ARE NOTED ON SURVEY PLAN AS REQUIRED BY THE RULES PROMULGATED UNDER SECTION 142 OF ACT NUMBER 59 OF THE PUBLIC ACTS OF 1978.

DATE: AUGUST 9, 1993

DUANE F. LEDY
PROFESSIONAL SURVEYOR
REGISTRATION NO. 21575

SURVEY AND UTILITY PLAN B.C.P. PROFESSIONAL PLAZA



LEDY ASSOCIATES INCORPORATED
CONSULTING ENGINEERS • LAND SURVEYORS

280 SO. MAIN ST. • FREELAND, MI. 48623
PH.: (517) 695-2593 • FAX: (517) 695-2150

Duane F. Ledy
DUANE F. LEDY
DATE: AUGUST 9, 1993

SHEET 2 OF 5
FILE: 071901-2