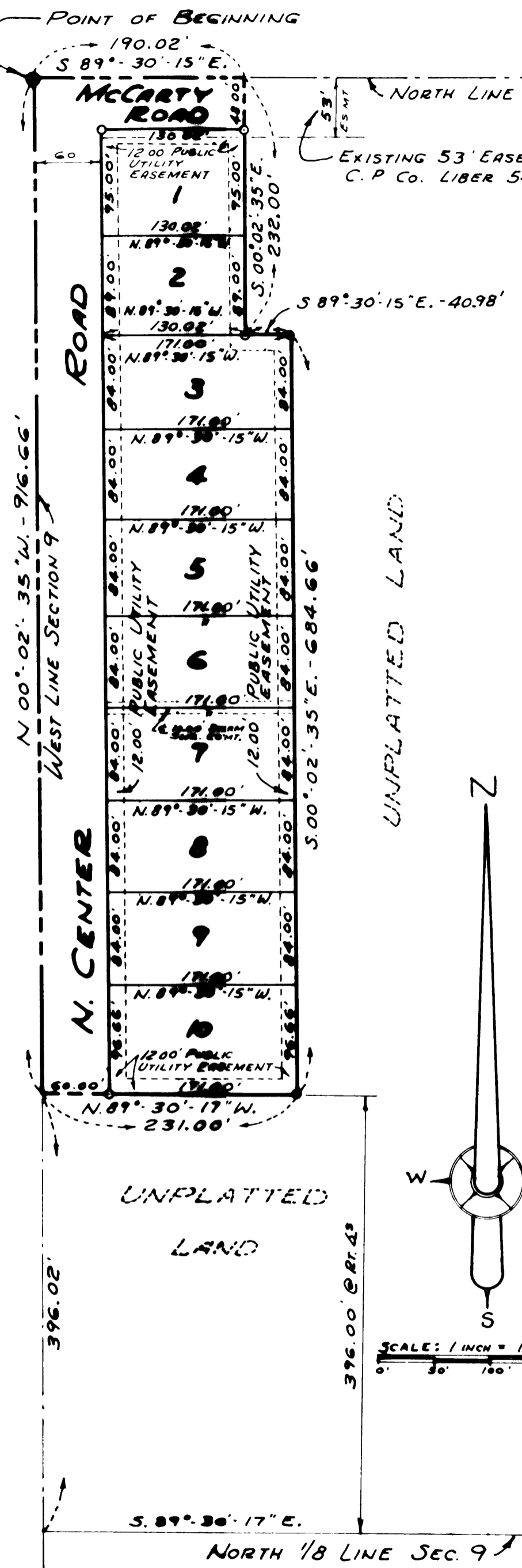


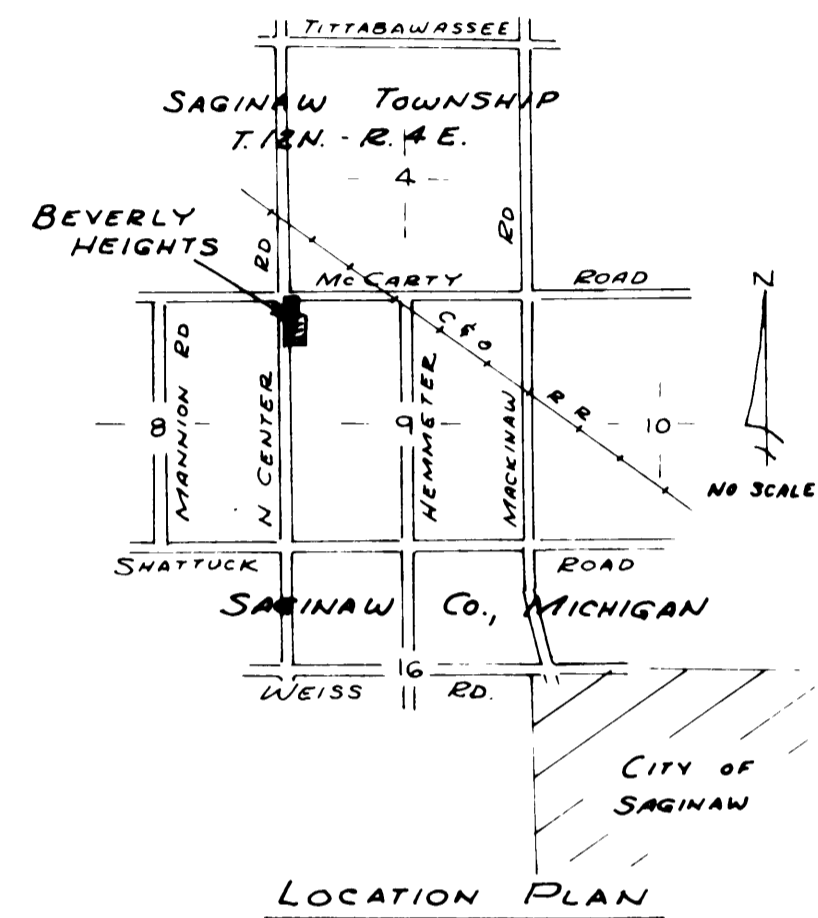
BEVERLY HEIGHTS

PART OF THE NORTHWEST 1/4 OF SECTION 9, T.12N.-R.4E.
SAGINAW TOWNSHIP, SAGINAW COUNTY, MICHIGAN

N.W. CORNER SECTION 9, T.12N.-R.4E.
SAGINAW TOWNSHIP, SAGINAW COUNTY, MICHIGAN



EXISTING 53' EASEMENT TO
C. P. Co. LIBER 543 Pg 599



Certified true and correct
plat

Richard L. Atwood
 ALBERT GREEN
 STATE TREASURER
 By *Richard L. Atwood*
 Richard L. Atwood - Plat Compiler
 Date November 19, 1976

- NOTE:
- 1- ALL DIMENSIONS ARE GIVEN IN FEET
 - 2- CONCRETE MONUMENTS HAVE BEEN PLACED AT ALL POINTS MARKED "O"
 - 3- SET SOLID IRON BARS 1/2" IN DIA. BY 18" IN LENGTH AT ALL LOT CORNERS
 - 4- BEARINGS ARE TRUE AS DETERMINED FROM AN OBSERVATION OF POLARIS ON MARCH 12, 1970

