

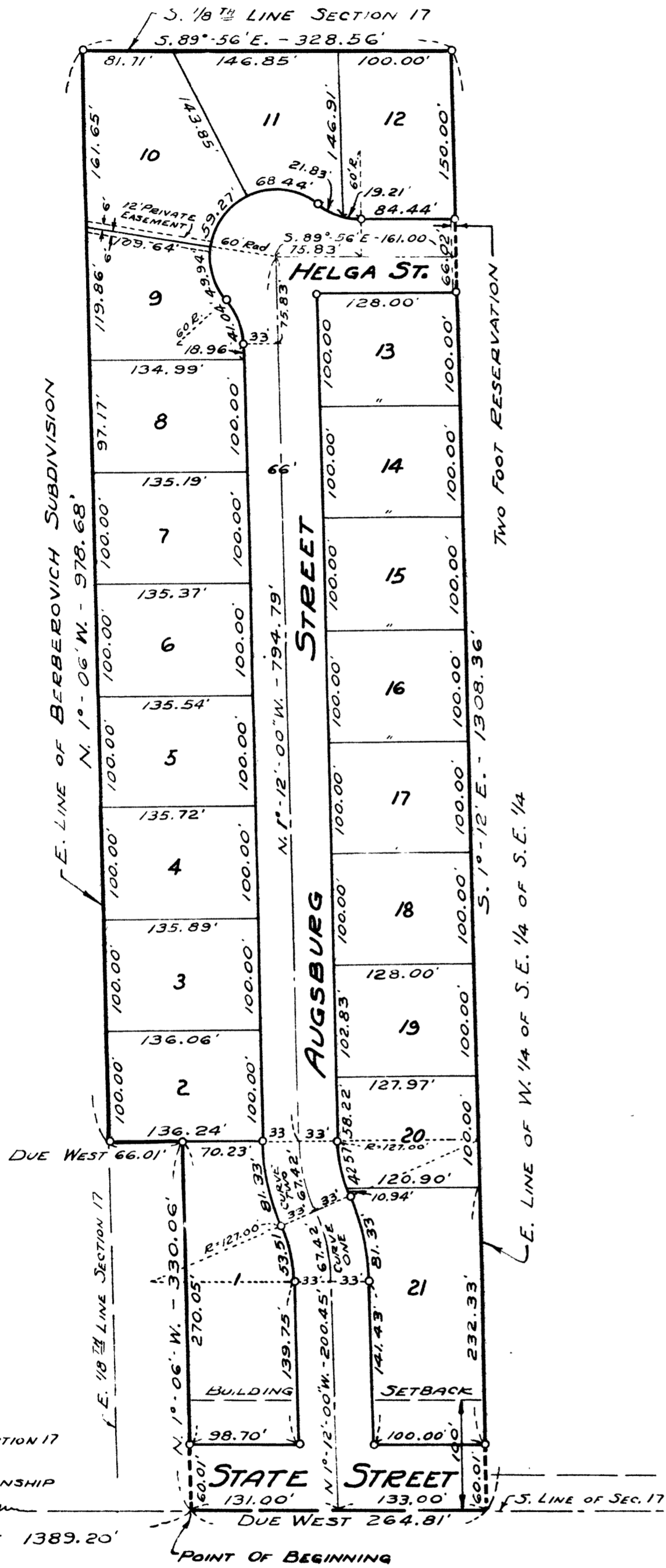
# BOEHM SUBDIVISION

## A PART OF S.E. 1/4 OF S.E. 1/4 SECTION 17, T.12N.-R.4E. SAGINAW TOWNSHIP, SAGINAW COUNTY - MICHIGAN

SCALE: 1 INCH = 100 FEET  
0 50 100 200 300 400  
ALL DIMENSIONS ARE GIVEN IN FEET AND DECIMALS THEREOF

THE SPICER ENGINEERING COMPANY  
SAGINAW - MICHIGAN

JUNE 1954



### DESCRIPTION

The land embraced in the annexed plat of BOEHM SUBDIVISION, A Part Of S.E. 1/4 Of S.E. 1/4 Section 17, T.12 N.-R.4 E., Saginaw Township, Saginaw County, Michigan, is described as follows: Commencing at a point on the South line of said Section 17, 1389.20 feet Due East along said line from the South 1/4 post of said Section; thence N.01°-06'-00"W., 330.06 feet; thence Due West parallel to the South Section line 66.01 feet; thence N.01°-06'-00"W., on the East line of Berberovich Subdivision 978.68 feet to the South 1/8th line of Section 17; thence S.89°-56'-00"E., on said 1/8th line 328.56 feet; thence S.01°-12'-00"E., on the East line of the West 1/4 post of the Southeast 1/4 of the Southeast 1/4 of Section 17, 1308.36 feet to the South line of said Section; thence Due West on said Section line 264.81 feet to the point of beginning.

### SURVEYOR'S CERTIFICATE

I hereby certify that the plat hereon delineated is a correct one and that permanent metal monuments consisting of bars not less than one-half inch in diameter and 48 inches in length, or shorter bars of not less than one-half inch in diameter lapped over each other at least 6 inches with an over-all length of not less than 48 inches, encased in a concrete cylinder at least 4 inches in diameter and 48 inches in depth have been placed at points marked thus o as thereon shown at all angles in the boundaries of the land platted, at all intersections of streets, at points of curvature and points of tangency in street lines, and at the intersections of streets with the boundaries of the plat as shown on said plat.

*Clifford H. Spicer*  
Clifford H. Spicer-Registered Land Surveyor

### DEDICATION

KNOW ALL MEN BY THESE PRESENTS, That I, Alois A. Boehm, a single man, as proprietor, have caused the land embraced in the annexed plat to be surveyed, laid out and platted, to be known as BOEHM SUBDIVISION, A Part Of S.E. 1/4 Of S.E. 1/4, Section 17, T.12 N.-R.4 E., Saginaw Township, Saginaw County, Michigan, and that the streets, as shown on said plat are hereby dedicated to the use of the public, Excepting however, from this dedication land designated "Two Foot Reservation," such land to be dedicated automatically for street purposes at such time as street extensions adjacent thereto are dedicated in adjoining property.

*Alois A. Boehm* (L.S.)  
Alois A. Boehm

Signed and Sealed in the Presence of)

*Clifford H. Spicer*  
Clifford H. Spicer  
*Elmer Spaedt*  
Elmer Spaedt

### ACKNOWLEDGMENT

STATE OF MICHIGAN)  
County of Saginaw) ss.

On this 1st day of July, 1954, before me, a Notary Public, in and for said County, personally came the above named Alois A. Boehm, known to me to be the person who executed the above dedication and acknowledged the same to be his free act and deed.

*Estelle M. Bryan*  
Estelle M. Bryan  
Notary Public, Saginaw County, Michigan

My Commission Expires May 16, 1958

### COUNTY TREASURER'S CERTIFICATE RELATING TO TAXES

(Sec. 135, Act 206, 1893 as amended - Sec. 1134, C. L. 1915.)  
Office of County Treasurer, Saginaw County

I hereby certify, that there are no tax liens or titles held by the State on the lands described hereon, and that there are no tax liens or titles held by individuals on said lands, for the five years preceding the 1st day of July, 1954 and that the taxes for said period of five years are all paid, as shown by the records of this office.

This certificate does not apply to taxes, if any, now in process of collection by township, city or village collecting officers.

*Carl G. Little*  
Carl G. Little  
County Treasurer

### CERTIFICATE OF APPROVAL BY THE COUNTY PLAT BOARD

This plat was approved by the County Plat Board of Saginaw County, Michigan, this 4th day of August, 1954.

COPY \_\_\_\_\_  
Register's Office \_\_\_\_\_ ss.  
County, \_\_\_\_\_  
Plat of \_\_\_\_\_  
was Recorded this \_\_\_\_\_ day of \_\_\_\_\_, A.D., 1954.

*Clara P. Turek*  
Clara P. Turek, Register of Deeds-Chairman  
*Peter Girard*  
Peter Girard Auditor  
*George Cavanaugh*  
George Cavanaugh Auditor  
*Charles E. Taroja, Jr.*  
Charles E. Taroja, Jr. Auditor

### CERTIFICATE OF APPROVAL BY BOARD OF COUNTY ROAD COMMISSIONERS

This plat has been examined and was approved on the 13th day of July, 1954 by the Saginaw County Board of Road Commissioners.

The Board of Road Commissioners of Saginaw Michigan, assumes no responsibility for the improvement or maintenance of the streets and roads shown on this plat until such time as they have been graded and drained with the necessary drainage structures installed and a gravel, slag, or cinder surface having a compacted thickness of at least 6 inches and a width of at least 18 feet has been applied and approved by this board.

*Frank Dudewicz*  
Frank Dudewicz Chairman  
*William M. Trinn*  
William M. Trinn Member  
*Albert M. Willis*  
Albert M. Willis Member

### CERTIFICATE OF MUNICIPAL APPROVAL

This plat was approved by the Township Board of the Township of Saginaw at a meeting held July 26, 1954 (Date)

*Walter Distel*  
Walter Distel Clerk

### CERTIFICATE OF APPROVAL BY CITY PLANNING COMMISSION

This plat was approved by the City Planning Commission of the City of Saginaw, Michigan, at a meeting held June 27, 1954 (Date)

*Russel O. Koenig*  
Russel O. Koenig Director

CURVE NO.	CENTERLINE DELTA $\Delta$	CURVE RADIUS	TANGENT	ARC
ONE	24°-08'-35"	160.00'	34.22'	67.42'
TWO	24°-08'-35"	160.00'	34.22'	67.42'

I hereby certify that this copy is a true and correct copy of the map or plat forwarded the Register of Deeds for recording.  
Date August 4, 1954  
Filed in Auditor General's Dept.  
Date August 4, 1954  
Examined and Approved  
Date August 4, 1954

*John B. Weston*  
John B. Weston  
Auditor General