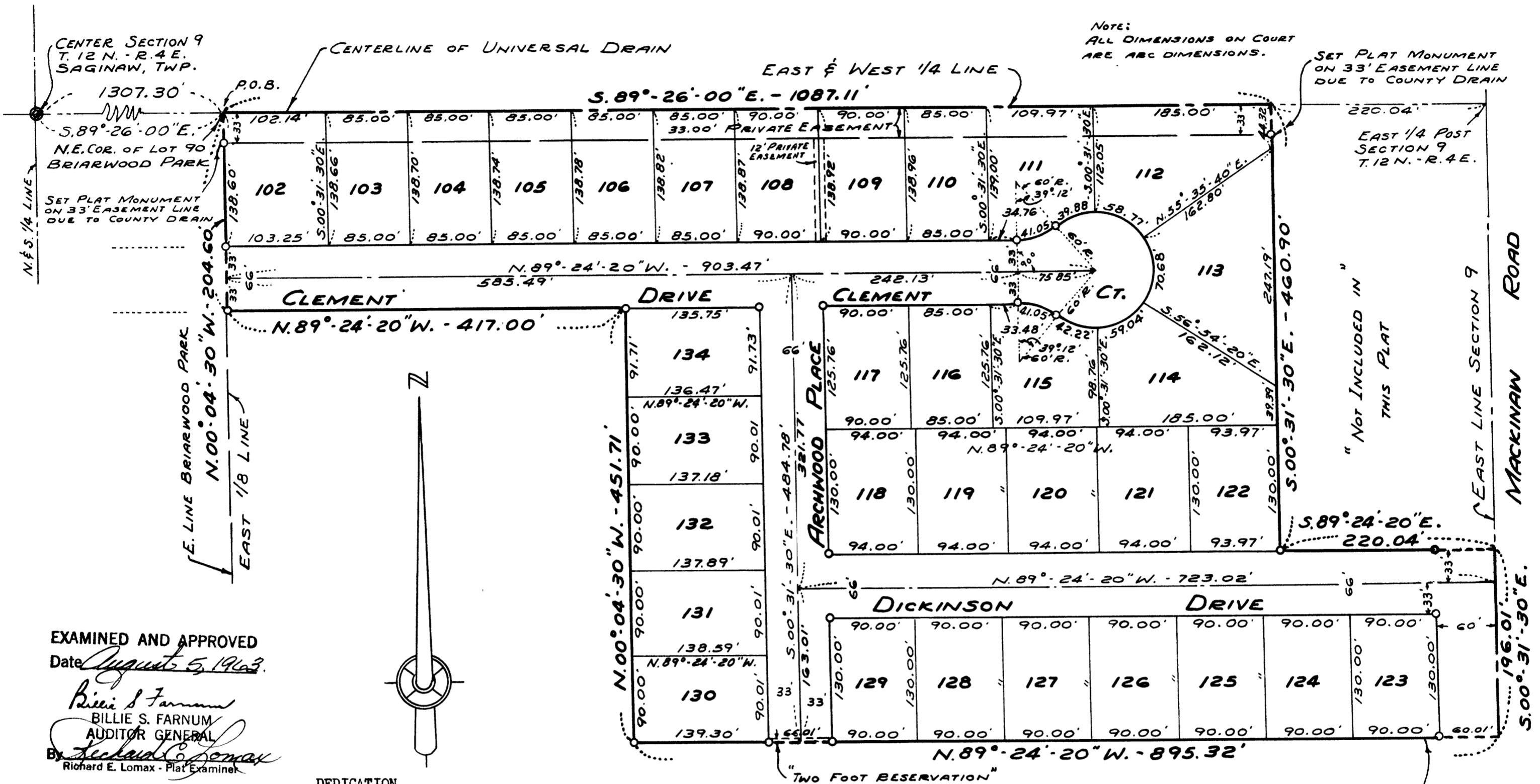


BRIARWOOD PARK "A"

A PART OF THE N.E. 1/4 OF THE S.E. 1/4 SECTION 9, T.12N.-R.4E.
SAGINAW TOWNSHIP - SAGINAW COUNTY - MICHIGAN.

SCALE: 1 INCH = 100 FEET
ALL DIMENSIONS ARE GIVEN IN FEET AND DECIMALS THEREOF

SPICER ENGINEERING COMPANY
SAGINAW, MICHIGAN
1963



EXAMINED AND APPROVED
Date August 5, 1963

Billie S. Farnum
AUDITOR GENERAL
Richard E. Lomax - Plat Examiner

DEDICATION

KNOW ALL MEN BY THESE PRESENTS, That we, the Saginaw Savings and Loan Association, a Michigan Corporation, by Eugene Pfeiffer, President and Theodore A. Urban, Secretary, as proprietors, have caused the land embraced in the annexed plat to be surveyed, laid out and platted to be known as BRIARWOOD PARK "A", A part of the N.E. 1/4 of the S.E. 1/4 of Section 9, T.12 N.-R.4 E., Saginaw Township, Saginaw County, Michigan, and that the Place, Drives, Road and Court as shown on said plat are hereby dedicated to the use of the public, Excepting however, from this dedication land designated "Two Foot Reservation", such land to be dedicated automatically for street purposes at such time as street extensions adjacent thereto are dedicated in adjoining property. Private easements as shown on said plat are hereby reserved for the installation and maintenance of public utilities and no permanent structures are to be located within said easements.

Signed and Sealed in the Presence of
Warren G. Wills
James I. Martin

SAGINAW SAVINGS AND LOAN ASSOCIATION
By Eugene Pfeiffer (L.S.)
Eugene Pfeiffer, President
By Theodore A. Urban (L.S.)
Theodore A. Urban, Secretary

ACKNOWLEDGMENT

STATE OF MICHIGAN
COUNTY OF SAGINAW ss:

On this 7th day of May, 1963, before me, a Notary Public, in and for said County, appeared Eugene Pfeiffer and Theodore A. Urban, to me personally known, who being each by me duly sworn did say that they are the President and Secretary, respectively, of the Saginaw Savings and Loan Association, a Michigan Corporation, and that the seal affixed to said instrument is the corporate seal of said Corporation and that said instrument was signed and sealed in behalf of said Corporation by authority of its Board of Directors and the said Eugene Pfeiffer and Theodore A. Urban acknowledged said instrument to be the free act and deed of said Corporation.

My Commission Expires April 2, 1966
Jane Brechtelsbauer
Notary Public, Saginaw County, Michigan

DESCRIPTION

The land embraced in the annexed plat of BRIARWOOD PARK "A", A part of the N.E. 1/4 of the S.E. 1/4 of Section 9, T.12 N.-R.4 E., Saginaw Township, Saginaw County, Michigan, is described as follows: Commencing on the East and West 1/4 line of said Section 9 at a point 1,307.30 feet S.89°-26'-00"E., along said line, from the center of said Section; thence S.89°-26'-00"E., along said 1/4 line 1,087.11 feet; thence S.00°-31'-30"E., 460.90 feet; thence S.89°-24'-20"E., 220.04 feet to the East line of said Section 9; thence S.00°-31'-30"E., along said line, 196.01 feet to the South line of the North 1/2 of the N.E. 1/4 of the S.E. 1/4 of said Section 9; thence N.89°-24'-20"W., along said line, 895.32 feet; thence N.00°-04'-30"W., 451.71 feet; thence N.89°-24'-20"W., 417.00 feet to the East 1/8th line of said Section 9; thence N.00°-04'-30"W., along said line, 204.60 feet to the point of beginning. This plat contains 33 lots numbered consecutively from 102 to 134 inclusive.

SURVEYOR'S CERTIFICATE

I hereby certify that the plat herein delineated is a correct one and that permanent metal monuments consisting of bars not less than one-half inch in diameter and 36 inches in length, or shorter bars of not less than one-half inch in diameter lapped over each other at least 6 inches with an over-all length of not less than 36 inches, encased in a concrete cylinder at least 4 inches in diameter and 36 inches in depth have been placed at points marked thus o as thereon shown at all angles in the boundaries of the land platted, at all intersections of streets, at points of curvature and points of tangency in street lines, and at the intersections of streets with the boundaries of the plat as shown on said plat.

Warren G. Wills, Registered Civil Engineer

COUNTY TREASURER'S CERTIFICATE RELATING TO TAXES
(Sec. 135, Act 206, 1893 as amended - Sec. 4134, C.L. 1915)
Office of County Treasurer, Saginaw County

I hereby certify, that there are no tax liens or titles held by the State on the land described hereon, and that there are no tax liens or titles held by individuals on said land, for the five years preceding the 16th day of May, 1963, and that the taxes for said period of five years are all paid, as shown by the records of this office.

This certificate does not apply to taxes, if any, now in process of collection by Township, City or Village collecting officers.

Raymond L. Dankers
County Treasurer

CERTIFICATE OF APPROVAL BY BOARD OF COUNTY ROAD COMMISSIONERS

This plat has been examined and was approved on the 23 day of July, 1963 by the Saginaw County Board of Road Commissioners.

John F. McInnis, Chairman
Harold H. Bauer, Member
Frank Keenan, Member

CERTIFICATE OF APPROVAL BY THE COUNTY PLAT BOARD

This plat was approved by the County Plat Board of Saginaw County, Michigan, this 29th day of May, 1963.

Kathryn J. Gage, Register of Deeds, Chairman
E. A. Benway, Auditor
William B. Baughman, Auditor
Peter Simon, Auditor
H.J. Dietrich, Saginaw County Drain Commissioner

CERTIFICATE OF MUNICIPAL APPROVAL

This plat was approved by the Township Board of the Township of Saginaw, at a meeting held the 13th day of May, 1963, and complies with Section 19A and that the width of lots is in compliance with requirements of Section 30, Act 172, of 1929, as amended.

Richard Stroebel, Township Clerk

CERTIFICATE OF APPROVAL BY CITY PLANNING COMMISSION

This plat was approved by the City Planning Commission of the City of Saginaw, Michigan, at a meeting held on the 28th day of May, 1963.

Registers Office - Saginaw Co., Mich. - SS
Recorded August 6, 1963 at 5:00
O'clock P.M. Liber 14 of Plat page 18
Malcolm W. Whitford, Secretary

Malcolm W. Whitford, Secretary

Sheet 14 Page 18

See Saginaw Plat of Briarwood Park "A" See Sheet 1090 Page 55

Sheet 14 Page 18