

# BROCKWAY CENTER SUBDIVISION

## SECTION 21. TOWN 12 NORTH — RANGE 4 EAST. SAGINAW TOWNSHIP

### SAGINAW COUNTY, MICHIGAN.

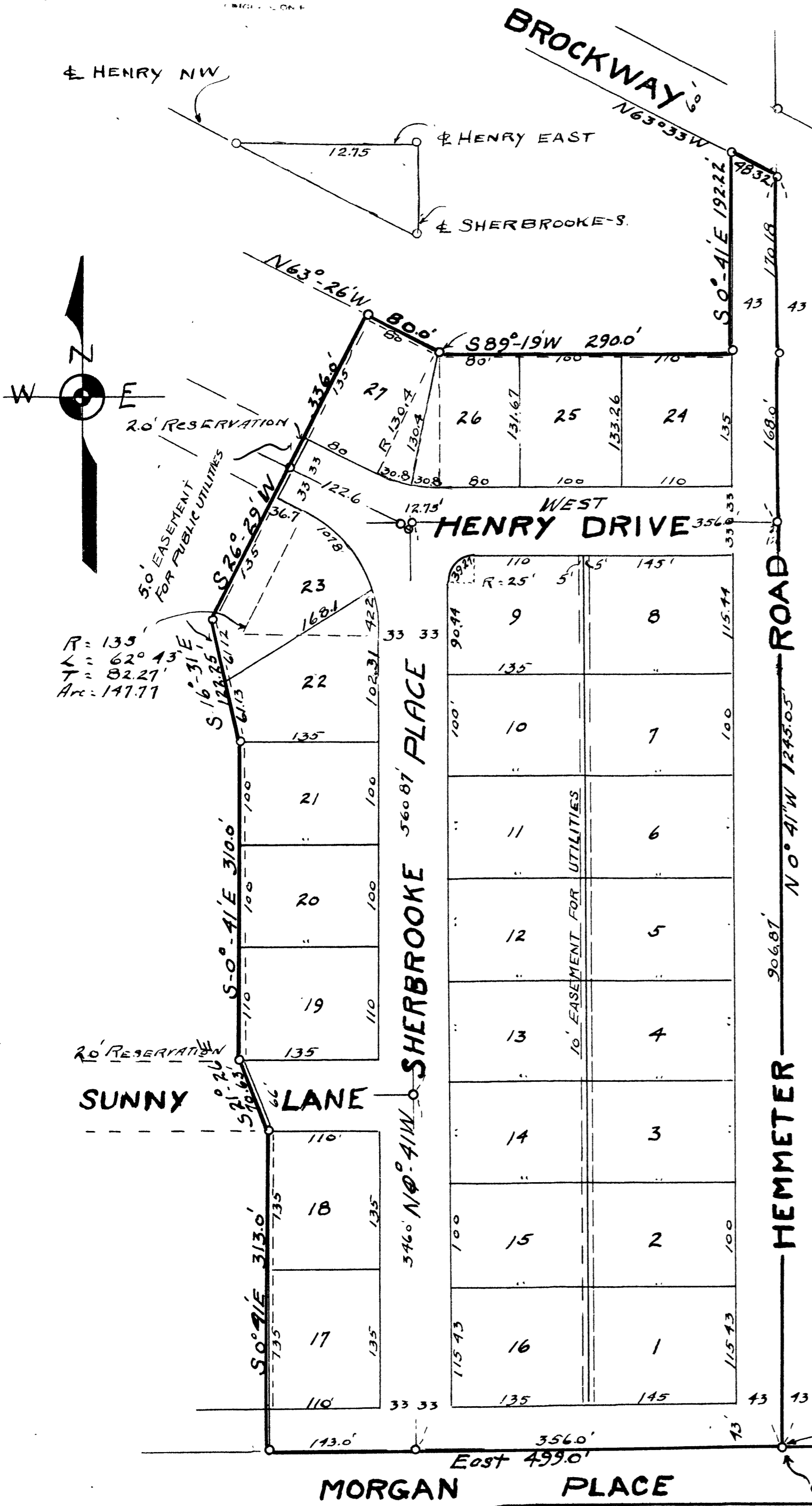
Register's Office  
 Date of "Brockway Center Subdivision"  
 was Recorded this 24th day of  
 September A.D. 1953 at 9:00 O'clock  
 A.M. in 7 Plats  
 Page 43  
 Clara O. Furek

SCALE 1" INCH = 100.0 FEET



NOTE: ALL DIMENSIONS ARE GIVEN IN FEET AND DECIMALS THEREOF  
 CARL H. PETERSON REG. CIVIL ENGINEER SAGINAW, MICHIGAN.

Date September 22, 1953  
 Filed  
 Date September 22, 1953  
 Examined and Approved  
 Date September 22, 1953  
 By *Carl H. Peterson*  
 PLAT ENGINEER



**DEDICATION**  
 KNOW ALL MEN BY THESE PRESENTS, That we ARTHUR KLUCK and CLARA KLUCK, his wife, and Miss HENRIETTA STELTZRIEDE, his sister-in-law, as proprietors, have caused the land embraced in the annexed plat to be surveyed, laid out and platted, to be known as BROCKWAY CENTER SUBDIVISION, in section 21, TOWNSHIP 12 NORTH-RANGE 4 EAST, SAGINAW TOWNSHIP, SAGINAW COUNTY, MICHIGAN, and that the STREETS, DRIVES, ROADS, PLACES and LANES, as shown on said plat, are hereby dedicated to the use of the public, and all easements for the use of public Utilities. However, excepting from this dedication, any lands designated (two (2) foot reservation), such lands to be deemed to be dedicated automatically at such time as DRIVES and LANES extensions, adjacent thereto are dedicated in the adjoining property.

Signed and Sealed in Presence of  
*Robert F. Braun* (L.S.)  
*Arthur Kluck* (L.S.)  
*Clara Kluck* (L.S.)  
*Henrietta Steltzriede* (L.S.)

**ACKNOWLEDGEMENT**  
 STATE OF MICHIGAN ss.  
 County of Saginaw  
 On this \_\_\_\_\_ day of \_\_\_\_\_ 1953 before me, a Notary Public in and for said county, personally came the above named ARTHUR KLUCK and CLARA KLUCK, his wife, and MISS HENRIETTA STELTZRIEDE, his sister-in-law, known to me to be the persons who executed the above dedication, and acknowledged the same to be their free act and deed.

My commission expires \_\_\_\_\_  
 Notary Public, Saginaw County Michigan.  
*Martin Braun*

**DESCRIPTION OF LAND PLATTED.**  
 The land embraced in the annexed plat of BROCKWAY CENTER SUBDIVISION, a subdivision of part of the East 1/4 of the South East 1/4 of the South West 1/4 of Section 21, Town 12 North-Range 4 East, Saginaw Township, Saginaw County, Michigan, and described as follows:  
 Commencing at the South 1/2 Corner Section 21, thence North 0 degrees -41 minutes West, 1245.05 feet, thence North 63 degrees -33 minutes West-48.32 feet, thence South 0 degrees -41 minutes East 192.22 feet, thence South 89 degrees -19 minutes West 290.0 feet, thence North 63 degrees -26 minutes West 80 feet, thence South 26 degrees -29 minutes West, 336.0 feet, thence South 16 degrees -31 minutes East 122.25 feet, thence South 0 degrees, 41 minutes East, 310.0 feet, thence South 21 degrees -26 minutes East 70.63 feet, thence South 0 degree -41 minutes East 313.0 feet, thence due East, to place of Beginning.  
 499.0 FEET

THE BOARD OF ROAD COMMISSIONERS OF SAGINAW CO., MICHIGAN, ASSUMES NO RESPONSIBILITY FOR IMPROVEMENTS OR MAINTENANCE OF THE STREETS AND ROADS AS SHOWN ON THIS PLAT, UNTIL SUCH TIME AS THEY HAVE BEEN GRADED AND DRAINED WITH THE NECESSARY DRAINAGE STRUCTURES INSTALLED AND A GRAVEL, SLAG OR CINDER SURFACE HAVING A COMPACTED THICKNESS OF AT LEAST (6") INCHES AND A WIDTH OF AT LEAST 18' FEET HAS BEEN APPLIED AND APPROVED BY THIS BOARD

**SURVEYOR'S CERTIFICATE.**  
 I hereby certify that the plat hereon delineated is a correct one and that permanent metal monuments consisting of bars not less than one-half inch in diameter and 48 inches in length, or shorter bars of not less than one-half inch in diameter lapped over each other at least 6 inches with an over-all length of not less than 48 inches encased in a concrete cylinder at least 4 inches in diameter and 48 inches in depth have been placed at points marked thus (O) as thereon shown at all angles in the boundaries of the land platted, at all the intersections of streets, and at all intersections of streets with the boundaries of the plat as shown on said plat.

**CERTIFICATE OF APPROVAL BY THE CITY PLANNING COMMISSION.**  
 Under authority provided by charter, and Act 285 of the Public Acts of Michigan, for 1931, this plat was approved by the City Planning Commission of the City of Saginaw, at a meeting held April 28 1953.

**CERTIFICATE OF MUNICIPAL APPROVAL.**  
 This plat was approved by the Township Board of the Township of Saginaw, Saginaw County, Michigan, at a meeting held, July 6 1953.

**CERTIFICATE OF APPROVAL BY THE COUNTY PLAT BOARD**  
 This plat was approved by the COUNTY PLAT BOARD of Saginaw County, Michigan this 16th day of Sept 1953

**COUNTY TREASURER'S CERTIFICATE RELATING TO TAXES**  
 I hereby certify, That there are no tax liens or titles held by the State on the lands described hereon, and that there are no tax liens or titles held by individuals on said lands, for the five years preceding the 28th day of April 1953, and that the taxes for said period of five years are all paid, as shown by the records of this office. This certificate does not apply to taxes, if any, now in process of collection by township, city or village collecting officers.

**CERTIFICATE OF APPROVAL BY BOARD OF COUNTY ROAD COMMISSIONERS.**  
 This plat has been examined and was approved on the 12th day of JUNE 1953, by the Saginaw County Board of Road Commissioners.

REGISTER OF DEEDS *Clara P. Furek* Chairman  
 AUDITOR *Peter Girard*  
 AUDITOR *Gus Jaramala*  
 AUDITOR *George L. ...*  
 COUNTY TREASURER *Charles E. Tafola*