

BROGKWAY MANOR PLAT NO. 1.

SECTION 21, TOWN TWELVE (12) NORTH RANGE FOUR (4) EAST, SAGINAW TOWNSHIP,
SAGINAW COUNTY, MICHIGAN.

SCALE, 1-INCH = 200 FEET.

JOHN F. TEFFT, REGISTERED LAND SURVEYOR, SAGINAW W.S. MICHIGAN.

NOTE: ALL DIMENSIONS ARE GIVEN IN FEET AND DECIMALS THEREOF.

DEDICATION.

KNOW ALL MEN BY THESE PRESENTS, That we ARTHUR KLUCK and CLARA KLUCK his wife, as Proprietor's have caused the land embraced in the annexed plat to be surveyed, laid out and platted to be known as BROGKWAY MANOR PLAT NO. 1. in Section 21, Township Twelve (12) North of Range Four (4) East, Saginaw Township, Saginaw County, Michigan. And that the Streets, Drives and Roads as shown on said plat are hereby dedicated to the use of the public, however, excepting from this dedication any lands designated "Two (2) Foot Reservation" such lands to be deemed to be dedicated automatically at such time as Streets and Driveways extensions adjacent thereto are dedicated in adjoining property.

Signed and Sealed in Presence of

Hattie M. Stalginski (L.S.)
Arthur Kluck (L.S.)
Clara Kluck (L.S.)

CERTIFICATE OF APPROVAL BY THE CITY PLANNING COMMISSION.

Under authority provided by charter, and Act 285 of the Public Acts of Michigan for 1931, this plat was approved by the City Planning Commission of Saginaw at a meeting held August 22 1952 of Michigan the city of

George L. Burns Chairman.
Robert Engineer-Secretary.

CERTIFICATE OF MUNICIPAL APPROVAL.

This plat was approved by the Township Board of the Township of Saginaw, Saginaw County, Michigan., at a meeting held Aug 17 1952

Fredrick W. ... Township Clerk.

CERTIFICATE OF APPROVAL BY BOARD OF COUNTY ROAD COMMISSIONERS.

This plat has been examined and was approved on the 29th day of July 1952 by the Saginaw County Board of Road Commissioners.

William M. ... Chairman.
Frank ... Member
Walter ... Member

CERTIFICATE OF APPROVAL BY THE BOARD OF COUNTY AUDITORS.

This plat was approved by the Board of County Auditor's of Saginaw County, Michigan this 13 day of August 1952

Peter ... Chairman.
... Member
... Member

COUNTY TREASURER'S CERTIFICATE RELATING TO TAXES.

I hereby certify, that there are no tax liens or titles held by the State on the lands described hereon, and that there are no tax liens or titles held by individuals on said lands, for five years preceding the 1952 day of ... five years are paid, as shown by the records of this office. This certificate does not apply to taxes, if any, now in the process of collection by township, city or village collecting officers.

... County Treasurer.

ACKNOWLEDGEMENT.

STATE OF MICHIGAN }
County of Saginaw } ss.

On this 25 day of July 1952 before me a Notary Public

in and for said County, personally came the above named ARTHUR KLUCK and CLARA KLUCK, his wife, known to me to be the persons who executed the above dedication, and acknowledged the same to be their free act and deed.

My Commission expires ... 19... Notary Public, Saginaw County, Michigan.

DESCRIPTION OF LAND PLATTED.

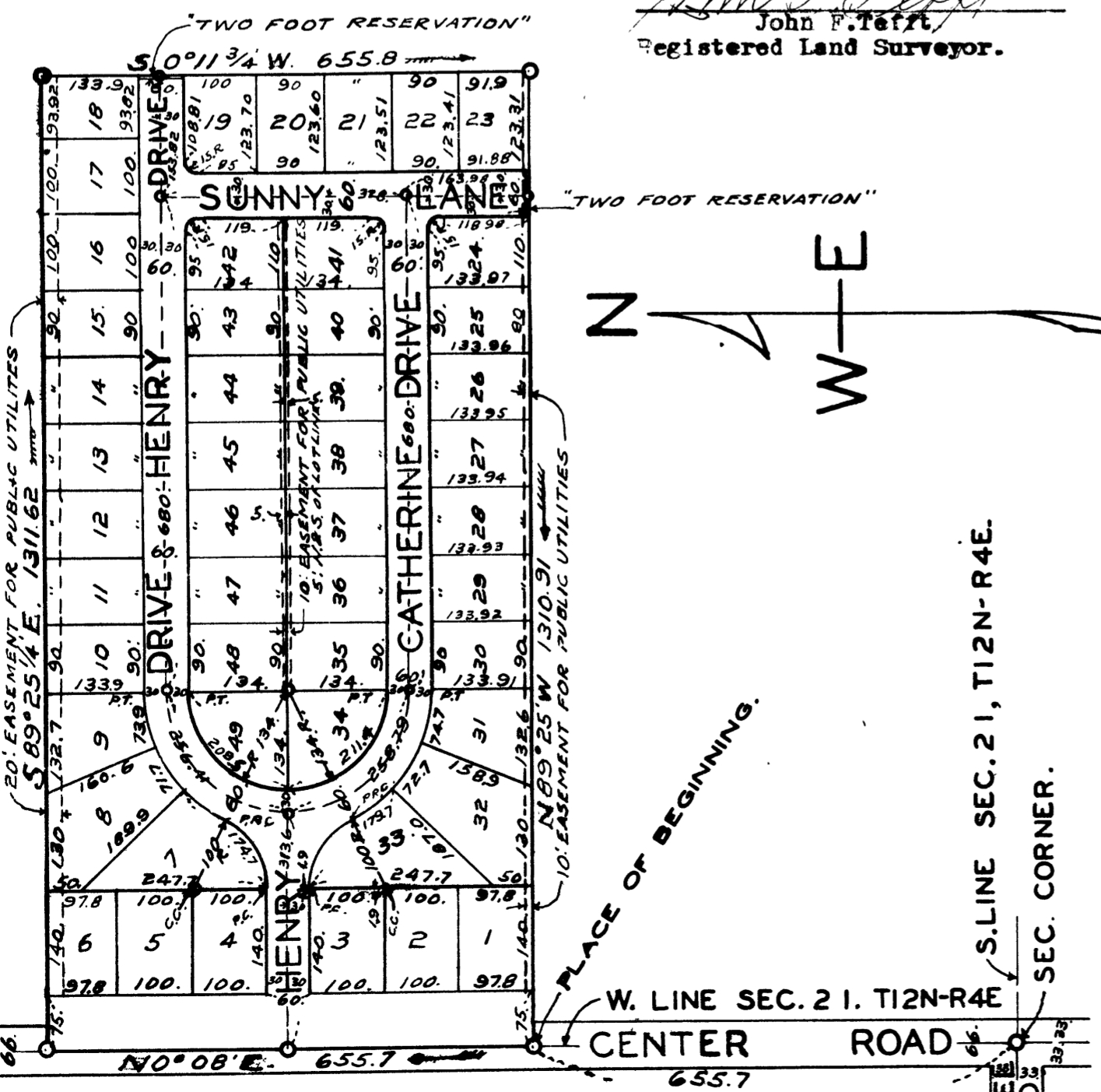
The land embraced in the annexed plat of BROGKWAY MANOR PLAT NO. 1. A Sub-division of the North-half (½) of the South-west quarter (¼) of the South-west quarter (¼) of Section 21, Township Twelve (12) North of Range Four (4) East, Saginaw Township, Saginaw County, Michigan., and described as follows;

Commencing on the West line of Section 21, said Township in Center of CENTER ROAD so-called, at a point 655.7 feet North of South-west corner of said Section 21; Running thence North 0-degrees 8 minutes East along and upon the said West line of Section 21, in said CENTER ROAD, 655.7 Feet; thence South 89 degrees 25; minutes East 1311.62 Feet; thence South 0-degrees 11½ minutes West 655.8 Feet; thence North 89 degrees 25-minutes West 1310.91 Feet to the place of beginning.

SURVEYOR'S CERTIFICATE.

I hereby certify, that the plat hereon delineated is a correct one and that permanent metal monuments consisting of bars not less than one-half (½) inch in diameter and 48 inches in length, or shorter bars of not less than one-half (½) inch in diameter lapped over each other at least 6-inches with an overall length of not less than 48 inches, insetted in a concrete cylinder at least 4-inches in diameter and 48-inches in depth have been placed at points marked thus (O) as thereon shown at all angles in the boundaries of the land platted, at all the intersections of Streets and Driveways with the boundaries of the plat as shown on said plat.

John F. Tefft
Registered Land Surveyor.



Examined and Approved
... 1952
Mayme Jewell Purdy Deputy Auditor General

I HEREBY CERTIFY THAT THIS COPY IS A TRUE COPY OF THE MAP OR PLAT FORWARDED TO THE REGISTER OF DEEDS FOR RECORDING.

COMPARED ... 1952
... DEPUTY AUDITOR GENERAL

FILED IN AUDITOR GENERAL'S DEPT.
... 1952
Mayme Jewell Purdy DEPUTY AUDITOR GENERAL

Register's Office
Saginaw County, } ss.
Plat of Brogkway Manor Plat No. 1, Saginaw Township was Recorded this 2 day of August, A.D., 1952 at 5:20 o'clock P.M. in Liber 7 of ... on Page 6
Clara P. Surick Register of Deeds
ORIGINAL OF FILE