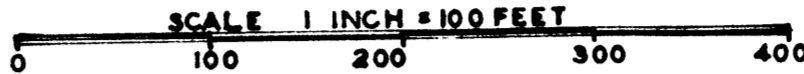


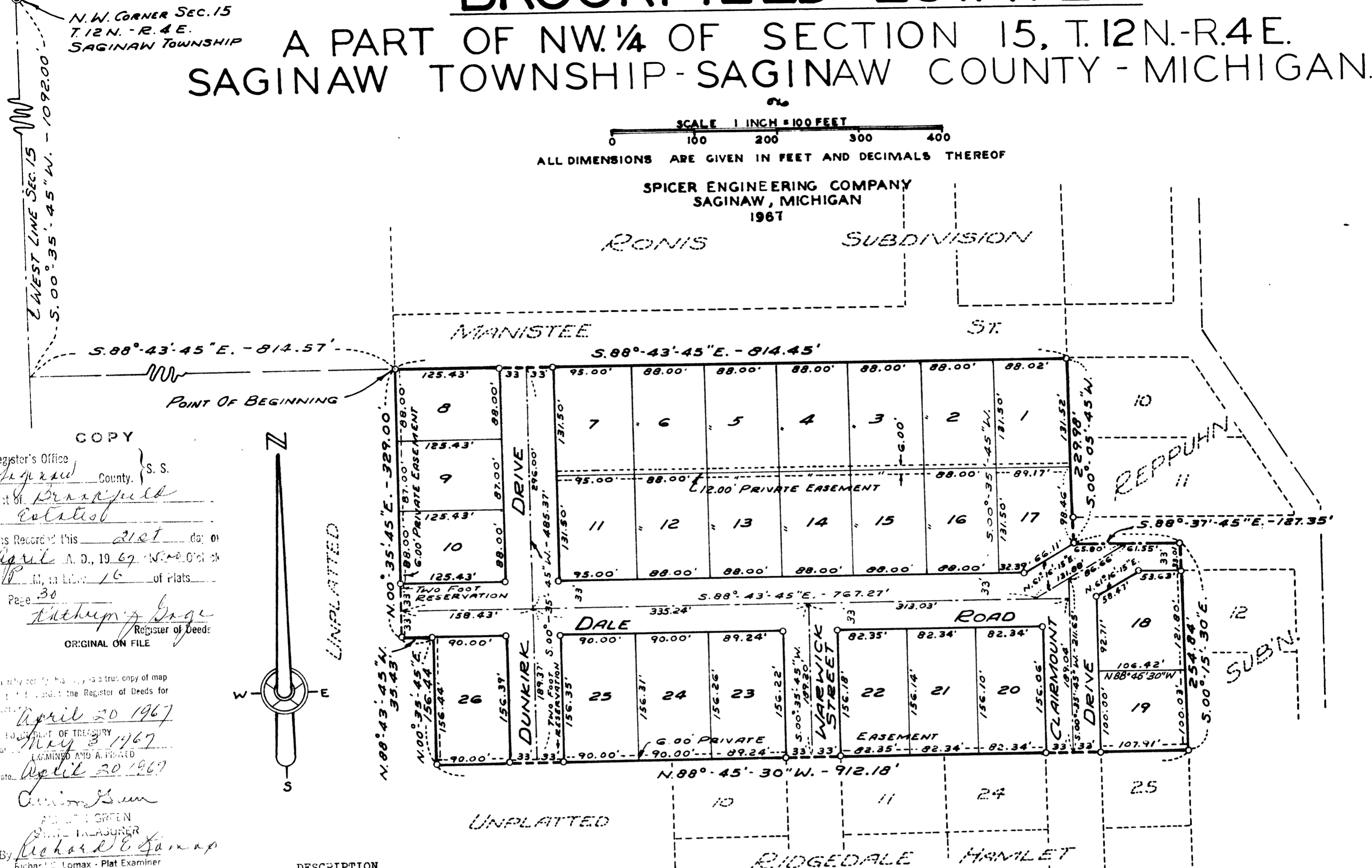
# BROOKFIELD ESTATES

## A PART OF NW 1/4 OF SECTION 15, T.12N.-R.4E. SAGINAW TOWNSHIP - SAGINAW COUNTY - MICHIGAN.



ALL DIMENSIONS ARE GIVEN IN FEET AND DECIMALS THEREOF

SPICER ENGINEERING COMPANY  
SAGINAW, MICHIGAN  
1967



COPY  
Register's Office  
Saginaw County, Mich.  
As Recorded this 21st day of April A. D., 1967  
Page 30  
Kathryn J. Gage  
Register of Deeds  
ORIGINAL ON FILE

By Richard L. Tomax - Plat Examiner

**DESCRIPTION**  
The land embraced in the annexed plat of BROOKFIELD ESTATES, A Part of N.W. 1/4 of Section 15, T.12 N.-R.4 E., Saginaw Township - Saginaw County - Michigan, is described as follows: commencing at the Northwest corner of said Section 15; thence S. 00°-35'-45"W., along the West Section line, 1,092.00 feet; thence S. 88°-43'-45"E., along the South line of the Ronis Subdivision as recorded and the point of beginning for this description; thence S. 88°-43'-45"E., along the South line of Manistee Street, 814.45 feet to the West line of Reppuhn Subdivision as recorded; thence S. 00°-05'-45"W., along said line, 229.98 feet to the centerline of Dale Road; thence S. 88°-37'-45"E., along said line, 127.35 feet to the West line of Reppuhn Subdivision; thence S. 00°-15'-30"E., along said line, 254.84 feet to the North line of the recorded plat of Ridgedale Hamlet; thence N. 88°-45'-30"W., along said line extended, 912.18 feet; thence N. 00°-35'-45"E., 156.44 feet; thence N. 88°-43'-45"E., 35.43 feet; thence N. 00°-35'-45"E., 329.00 feet to the point of beginning. This plat contains 26 Lots numbered consecutively from 1 to 26 inclusive.

**SURVEYOR'S CERTIFICATE**  
I hereby certify that the plat hereon delineated is a correct one and that permanent metal monuments consisting of iron rods at least one half inch in diameter and thirty-six inches in length encased in concrete cylinder at least four inches in diameter and thirty-six inches in length have been placed at all points marked thus "0" as thereon shown at all angles in the boundary of the plat, at the intersection of lines of streets, and at the intersection of the lines of streets with the boundaries of the plat as shown on said plat.

Prepared and Drafted By John W. Martin, Registered Land Surveyor, No. 4699  
818 South Michigan Avenue, Saginaw, Michigan

**CERTIFICATE OF APPROVAL BY BOARD OF COUNTY ROAD COMMISSIONERS**  
This plat has been examined and was approved on the 21st day of March, 1967, by the Saginaw County Board of Road Commissioners.  
Harold H. Bauer Chairman  
George McDonagh Member  
Edmund C. Falkenhagen Member

**COUNTY TREASURER'S CERTIFICATE RELATING TO TAXES**  
(Sec. 135, Act 206, 1893, as amended - Sec. 211, 135, C.L. 1948.)  
Office of County Treasurer, Saginaw County

I hereby certify, That there are no tax liens or titles, held by the State on the lands described hereon, and that there are no tax liens or titles held by individuals on said lands, for the five years preceding the 1st day of April, 1967, and that the taxes for said period of five years are all paid, as shown by the records of this office.

This certificate does not apply to taxes, if any, now in process of collection by township, city or village collecting officers.  
Raymond L. Dankers County Treasurer

**CERTIFICATE OF MUNICIPAL APPROVAL**  
This plat was approved by the Township Board of the Township of Saginaw at a meeting held the 11th day of June, 1967, and complies with Section 19A and the width of lots is in compliance with requirements of Section 30, Act 172, of 1929, as amended.  
Richard Stroebel Township Clerk

**DEDICATION**  
KNOW ALL MEN BY THESE PRESENTS, That we Louis W. Haenlein, a widower, Walter W. Fuhrhop and Betty J. Fuhrhop, his wife, as proprietors, have caused the land embraced in the annexed plat to be surveyed, laid out and platted, to be known as BROOKFIELD ESTATES, A Part of N.W. 1/4 of Section 15, T.12 N.-R.4 E., Saginaw Township - Saginaw County - Michigan, and that the Drives, Street and Road as shown on said plat are hereby dedicated to the use of the public, Excepting however, from this dedication land designated "Two Foot Reservation," such land to be dedicated automatically for street purposes at such time as street extensions adjacent thereto are dedicated in adjoining property. Private easements as shown on said plat are hereby reserved for the installation and maintenance of public utilities and no permanent structures are to be located within said easements.

Signed and Sealed in Presence of )  
Louis W. Haenlein (L. S.)  
4345 Mackinaw Road, Saginaw, Michigan  
Walter W. Fuhrhop (L. S.)  
3715 Eton Place, Saginaw, Michigan  
Betty J. Fuhrhop (L. S.)  
3715 Eton Place, Saginaw, Michigan

**ACKNOWLEDGMENT**  
STATE OF MICHIGAN) ss.  
County of Saginaw) ss.  
On this 29th day of March, 1967, before me, a Notary Public in and for said county, personally came the above named Louis W. Haenlein, a widower, Walter W. Fuhrhop and Betty J. Fuhrhop, his wife, known to me to be the persons who executed the above dedication, and acknowledged the same to be their free act and deed.

Jane Brechtelsbauer  
Jane Brechtelsbauer  
Notary Public, Saginaw County, Michigan  
My Commission Expires April 5, 1966

**CERTIFICATE OF APPROVAL BY COUNTY PLAT BOARD**  
This plat was approved on the \_\_\_\_\_ day of \_\_\_\_\_, 19\_\_\_\_, by the Saginaw County Plat Board.

Kathryn J. Gage Register of Deeds, Chairman  
R. A. Benway Auditor  
William H. Baughman Auditor  
Peter Simon Auditor  
Raymond Jaenicke Saginaw County Drain Commissioner