

CHARTER HEIGHTS

PART OF THE NORTHEAST 1/4 OF THE SOUTHEAST 1/4 OF FRACTIONAL SECTION 18, T.12N. - R.4E.

SAGINAW TOWNSHIP, SAGINAW COUNTY, MICHIGAN

CAMBRIDGE VILLAGE
REC. L-20, PGS. 47 & 48

10 11 12 13 14 15

116

UNPLATTED LAND

DARWIN LANE

RIGHT-OF-WAY TO Bd. of Co. Rd. Commission
WARRANTY DEED LIBER 1308 PAGE 273

EAST & WEST 1/4 LINE
S.88°-23'-20"E - 980.17'

S.88°-23'-20"E - 980.17'

N.88°-23'-20"W - 328.41'

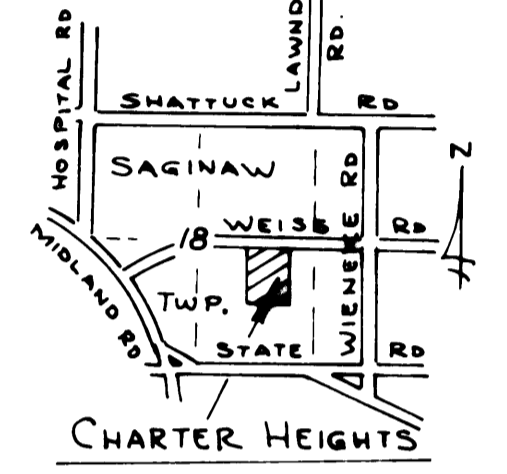
E. 1/4 COR. SEC. 18
T.12N. - R.4E.
SAGINAW TOWNSHIP
SAGINAW CO., MICHIGAN

POINT OF BEGINNING

CURVE DATA						
No	DELTA ANGLE	RADIUS	ARC	CHORD	CHD BEARING	TANGENT
1	89°-06'-26"	30.00	46.66	42.10	S.44°-01'-18"E	29.54
2	89°-06'-26"	96.00	149.30	134.70	S.44°-01'-18"E	94.52
3	89°-06'-26"	3000	46.66	42.10	S.44°-01'-18"E	29.54
4	89°-06'-26"	96.00	149.30	134.70	S.44°-01'-18"E	94.52
5	90°-53'-34"	30.00	47.59	42.76	N.45°-58'-42"E	30.47
6	90°-53'-34"	96.00	152.29	136.82	N.45°-58'-42"E	97.51

NOTES:

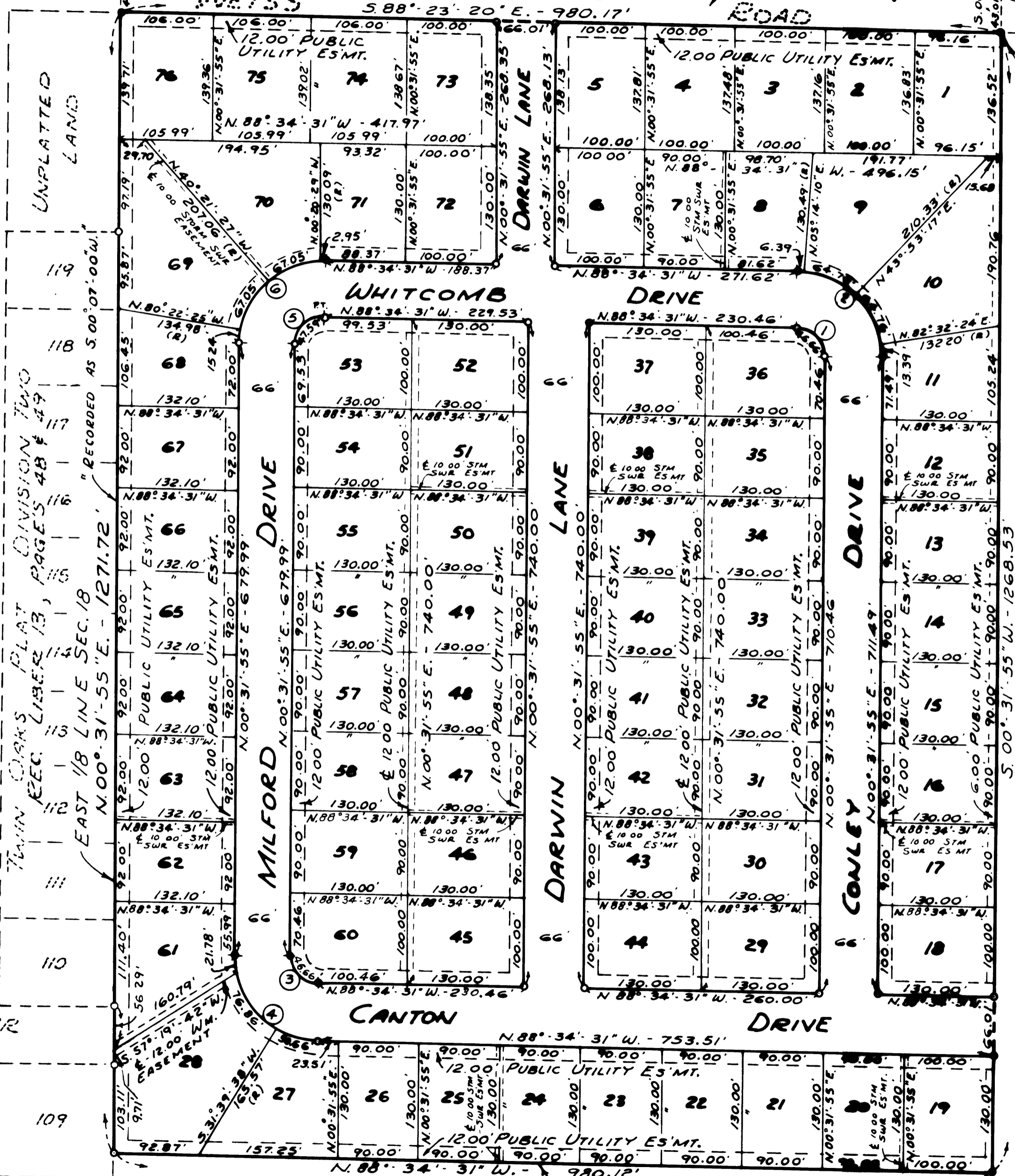
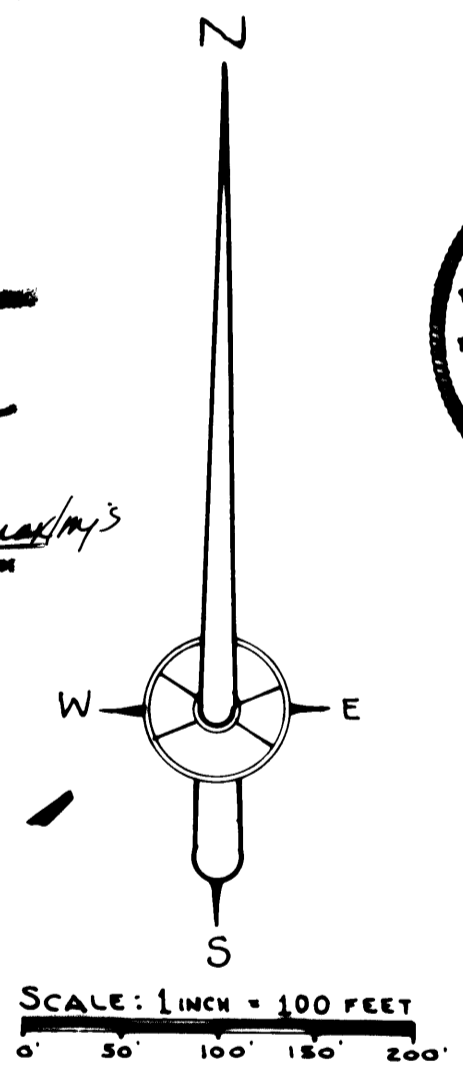
- 1- ALL DIMENSIONS ARE GIVEN IN FEET
- 2- ALL CURVILINEAR MEASUREMENTS ARC ARC DISTANCES
- 3- CONCRETE MONUMENTS HAVE BEEN PLACED AT ALL POINTS MARKED "O"
- 4- SET SOLID IRON BARS 1/2" IN DIA BY 18" IN LENGTH AT ALL LOT CORNERS
- 5- BEARINGS WERE DERIVED FROM THE RECORDED PLAT OF CAMBRIDGE VILLAGE, LIBER 20, PAGES 47 AND 48
- 6- (R) INDICATES A RADIAL LINE.



LOCATION PLAN
NO SCALE



Certified true copy of
this plat
Allison Green
ALLISON GREEN
STATE TREASURER
By *Richard E. Loman*
Richard E. Loman - Plat Examiner
Date *July 6, 1978*



SOUTH 1/8 LINE SEC 18
UNPLATTED LAND

TWIN OAKS PLAT DIVISION TWO
REC. LIBER 13, PAGES 48 & 49

EAST 1/8 LINE SEC. 18
N.00°-31'-55"E - 1271.72'

RECORDED AS S.00°-07'-00"W

RECORDED AS S.00°-07'-00"W

RECORDED AS S.00°-07'-00"W

RECORDED AS S.00°-07'-00"W

UNPLATTED LAND

UNPLATTED LAND

UNPLATTED LAND

UNPLATTED LAND

UNPLATTED LAND

UNPLATTED LAND

NORTH

DRIVE

KEARNEY

EELMAR DR.

109

110

111

112

113

114

115

116

117

118

119

120

121

122

123

124

125

126

127

128

129

130

131

132

133

134

135

136

137

138

139

140

141

142

143

144

145

146

147

148

149

150

151

152

153

154

155

156

157

158

159

160

161

162

163

164

165

166

167

168

169

170

171

172

173

174

175

176

177

178

179

180

181

182

183

184

185

186

187

188

189

190

191

192

193

194

195

196

197

198

199

200

201

202

203

204

205

206

207

208

209

210

211

212

213

214

215

216

217

218

219

220

221

222

223

224

225

226

227

228

229

230

231

232

233

234

235

236

237

238

239

240

241

242

243

244

245

246

247

248

249

250

251

252

253

254

255

256

257

258

259

260

261

262

263

264

265

266

267

268

269

270

271

272

273

274

275

276

277

278

279

280

281

282

283

284

285

286

287

288

289

290

291

292

293

294

295

296

297

298

299

300

301

302

303

304

305

306

307

308

309

310

311

312

313

314

315

316

317

318

319

320

321

322

323

324

325

326

327

328

329

330