

ENGLEWOOD

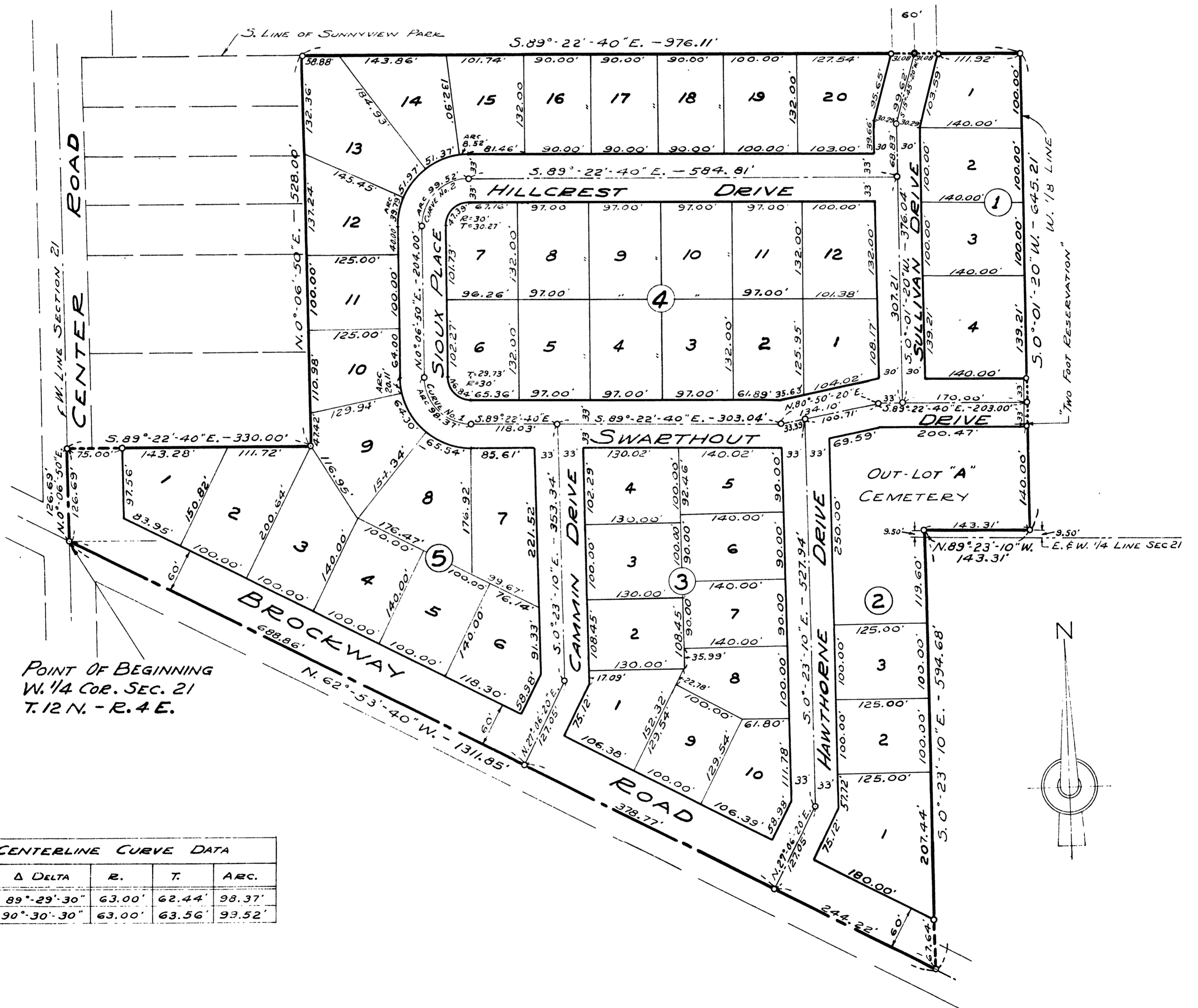
A PART OF W. 1/2 OF W. 1/2 - SECTION 21, T. 12 N. - R. 4 E.

SAGINAW TOWNSHIP - SAGINAW COUNTY - MICHIGAN

SCALE = 1 INCH = 100 FEET

ALL DIMENSIONS ARE GIVEN IN FEET AND DECIMALS THEREOF

THE SPICER ENGINEERING COMPANY
SAGINAW, MICHIGAN
FEBRUARY 1953



POINT OF BEGINNING
W. 1/4 COR. SEC. 21
T. 12 N. - R. 4 E.

CENTERLINE CURVE DATA				
CURVE No.	Δ DELTA	R.	T.	ARC.
1	89°-29'-30"	63.00'	62.44'	98.37'
2	90°-30'-30"	63.00'	63.56'	93.52'