

FARMINGTON PARK No. THREE

A PART OF THE N.E. 1/4 SECTION 17, T.12 N.-R.4 E.

SAGINAW TOWNSHIP, SAGINAW COUNTY, MICHIGAN

Register's Office
Saginaw County

Plat of Farmington Park No. 3

was Recorded this 26th day
Sept. A. D., 1966 at 5:00'clock
P. M. in Liber 16 of Plate
on Page 6

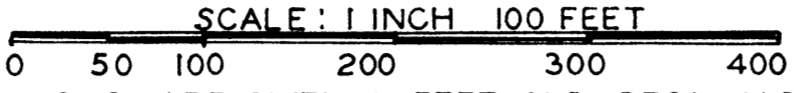
Register of Deeds
ORIGINAL ON FILE

FILED IN DEPT. OF TREASURY
DATE: September 12, 1966
EXAMINED AND APPROVED

Date: September 1, 1966

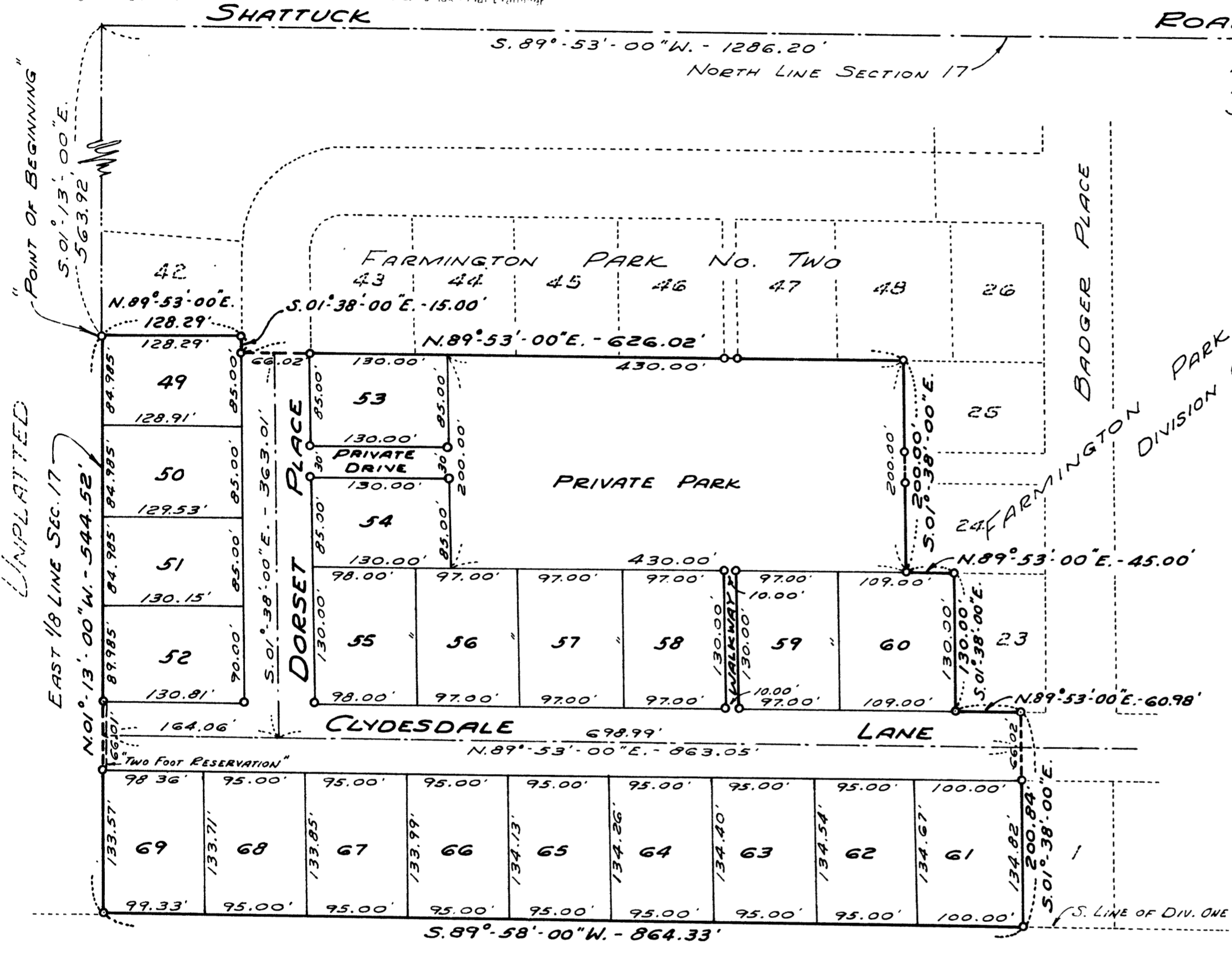
Allison Green
STATE TREASURER

By: Richard E. Lomas
Richard E. Lomas - Plat Examiner



ALL DIMENSIONS ARE GIVEN IN FEET AND DECIMALS THEREOF

SPICER ENGINEERING COMPANY
SAGINAW, MICHIGAN
1966



CERTIFICATE OF APPROVAL BY
BOARD OF COUNTY ROAD COMMISSIONERS

This plat has been examined and was approved on the 9th day of August, 1966, by the Saginaw County Board of Road Commissioners.

John F. McInnis Chairman
Harold H. Bauer Member
Bruce McDonagh Member

COUNTY TREASURER'S CERTIFICATE RELATING TO TAXES
(Sec. 135, Act 206, 1893, as amended - Sec. 211, 135, C.L. 1948.)
Office of County Treasurer, Saginaw County

I hereby certify, That there are no tax liens or titles, held by the State on the lands described hereon, and that there are no tax liens or titles held by individuals on said lands, for the five years preceding the 1st day of November, 1965, and that the taxes for said period of five years are all paid, as shown by the records of this office.

This certificate does not apply to taxes, if any, now in process of collection by township, city or village collecting officers.

Raymond L. Dankers
County Treasurer

DEDICATION

KNOW ALL MEN BY THESE PRESENTS, That we "FARMINGTON PARK" a registered copartnership composed of Lorenz A. Loos and Joseph A. Bohrer, by Lorenz A. Loos, Attorney-in-fact, as recorded in Liber 1028 of Deeds, page 93 of the Saginaw County records, as proprietors, have caused the land embraced in the annexed plat to be surveyed, laid out and platted, to be known as FARMINGTON PARK NO. THREE, A Part of the N.E.1/4, Section 17, T.12 N.-R.4 E., Saginaw Township, Saginaw County, Michigan, and that the Lane, Place and Walkway, as shown on said plat, are hereby dedicated to the use of the public, excepting however, from this dedication land designated "Two Foot Reservation," such land to be dedicated automatically for street purposes at such time as street extensions adjacent thereto are dedicated in adjoining property. The Private Drive and Private Park are hereby dedicated to the use of the owners of Lots in Farmington Park Division One, Farmington Park No. Two and Farmington Park No. Three.

Signed and Sealed in the Presence of
Lorenz A. Loos, Copartner
1434 Coolidge Avenue, Saginaw, Michigan
Joseph A. Bohrer, Attorney-in-fact for
Joseph A. Bohrer, Copartner
1434 Coolidge Avenue, Saginaw, Michigan

ACKNOWLEDGMENT

STATE OF MICHIGAN)
County of Saginaw) ss.

On this 25th day of October, 1965, before me, a Notary Public in and for said County, personally came the above named Lorenz A. Loos, in his own behalf as copartner, and in behalf of Joseph A. Bohrer, copartner, known to me to be the copartners who executed the above dedication and acknowledged the same to be the free act and deed of "Farmington Park" a registered copartnership.

My Commission Expires April 5, 1966
Jane Brechtelsbauer
Notary Public, Saginaw County Michigan

CERTIFICATE OF MUNICIPAL APPROVAL

This plat was approved by the Township Board of the Township of Saginaw at a meeting held the 8th day of NOVEMBER, 1965, and complies with Section 19A and the width of lots is in compliance with requirements of Section 30, Act 172, of 1929, as amended.

Richard Stroebel
Township Clerk

DESCRIPTION

The land embraced in the annexed plat of FARMINGTON PARK NO. THREE, A Part of the N.E.1/4 of Section 17, T.12 N.-R.4 E., Saginaw Township, Saginaw County, Michigan, is described as follows: commencing at the Northeast corner of said Section 17; thence S.89°-53'-00"W., along the North Section line, 1,286.20 feet to the East 1/8th line of said Section 17; thence S.01°-13'-00"E., along said line, 563.92 feet to the Southwest corner of Lot 42 of the recorded plat of Farmington Park No. Two and the point of beginning for this description; thence N.89°-53'-00"E., 128.29 feet; thence S.01°-38'-00"E., 15.00 feet; thence N.89°-53'-00"E., 626.02 feet to the Northwest corner of Lot 25 of the recorded plat of Farmington Park Division One; thence S.01°-38'-00"E., 200.00 feet; thence N.89°-53'-00"E., 45.00 feet; thence S.01°-38'-00"E., 130.00 feet; thence N.89°-53'-00"E., 60.98 feet; thence S.01°-38'-00"E., 200.84 feet to the Southwest corner of Lot 1 of the recorded plat of Farmington Park Division One; thence S.89°-58'-00"W., along the North line of the Consumers Power Company Right-of-Way, 864.33 feet to the East 1/8th line of said Section 17; thence N.01°-13'-00"W., along said line, 544.52 feet to the point of beginning. This plat contains 21 Lots numbered consecutively from 49 to 69 inclusive

SURVEYOR'S CERTIFICATE

I hereby certify that the plat hereon delineated is a correct one and that permanent metal monuments consisting of iron rods at least one half inch in diameter and thirty-six inches in length encased in concrete cylinder at least four inches in diameter and thirty-six inches in length have been placed at all points marked thus "O" as thereon shown at all angles in the boundary of the plat, at the intersection of lines of streets, and at the intersection of the lines of streets with the boundaries of the plat as shown on said plat.

Prepared and Drafted by John W. Martin
John W. Martin, Registered Land Surveyor, No. 4699
818 South Michigan Avenue, Saginaw, Michigan

CERTIFICATE OF APPROVAL BY COUNTY PLAT BOARD

This plat was approved on the 16th day of August, 1966, by the Saginaw County Plat Board.

Kathryn J. Gage, Register of Deeds, Chairman
R. A. Benway, Auditor
William H. Baughman, Auditor
Peter Simon, Auditor
Raymond Jaenicke, Saginaw County Drain Commissioner