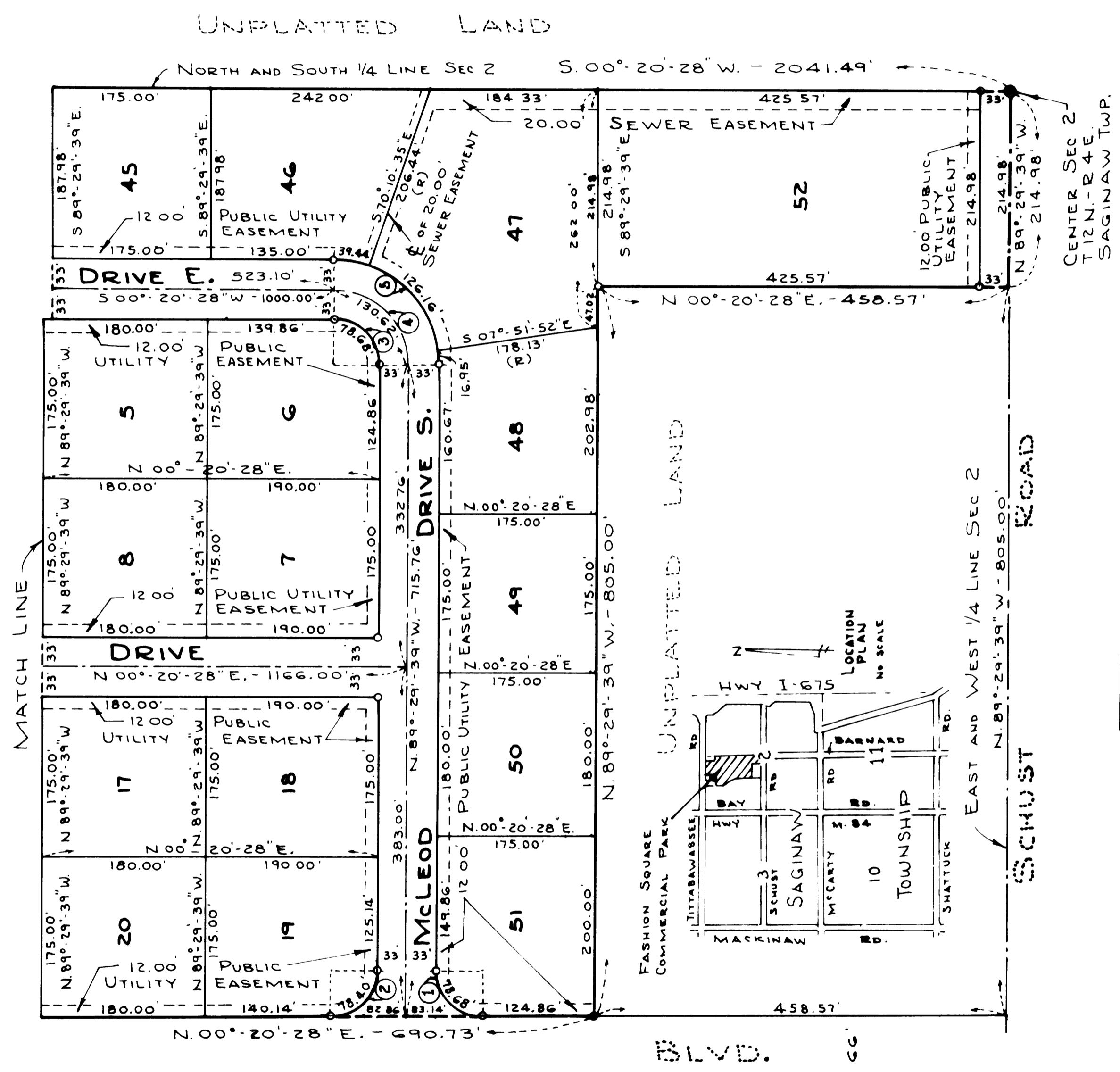
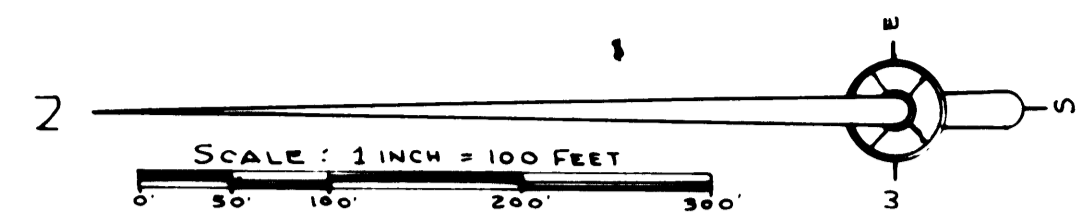


FASHION SQUARE COMMERCIAL PARK

PART OF THE NORTHWEST 1/4 OF SECTION 2, T.12N.-R.4E.
SAGINAW TOWNSHIP, SAGINAW COUNTY, MICHIGAN

SPICER ENGINEERING COMPANY
SAGINAW, MICHIGAN
1972



CURVE DATA			
NO	DELTA ANGLE	RADIUS	ARC
1	90°-09'-53"	50.00'	78.68'
2	81°-50'-07"	50.00'	78.40'
3	90°-09'-53"	50.00'	78.68'
4	90°-09'-53"	83.00'	130.62'
5	90°-09'-53"	116.00'	182.55'
6	89°-50'-07"	50.00'	78.40'
7	89°-50'-07"	83.00'	130.14'
8	30°-00'-00"	116.00'	181.88'
9	30°-00'-00"	716.00'	374.89'
10	30°-00'-00"	650.00'	340.34'
11	118°-30'-34"	50.00'	103.42'
12	78°-25'-33"	50.00'	68.44'

- 1 ALL DIMENSIONS ARE GIVEN IN FEET
- 2 ALL CURVILINEAR MEASUREMENTS ARE ARC DISTANCES
- 3 CONCRETE MONUMENTS HAVE BEEN PLACED AT ALL POINTS MARKED "O"
- 4 SET SOLID IRON BARS 1/2" IN DIA BY 18" IN LENGTH AT ALL LOT CORNERS
- 5 BEARINGS ARE TRUE AS DETERMINED FROM AN OBSERVATION OF POLARIS ON 11-24-70
- 6 (R) INDICATES CURVE NUMBER (SEE CURVE TABLE HEREON)
- 7 (R) INDICATES RADIAL LINE