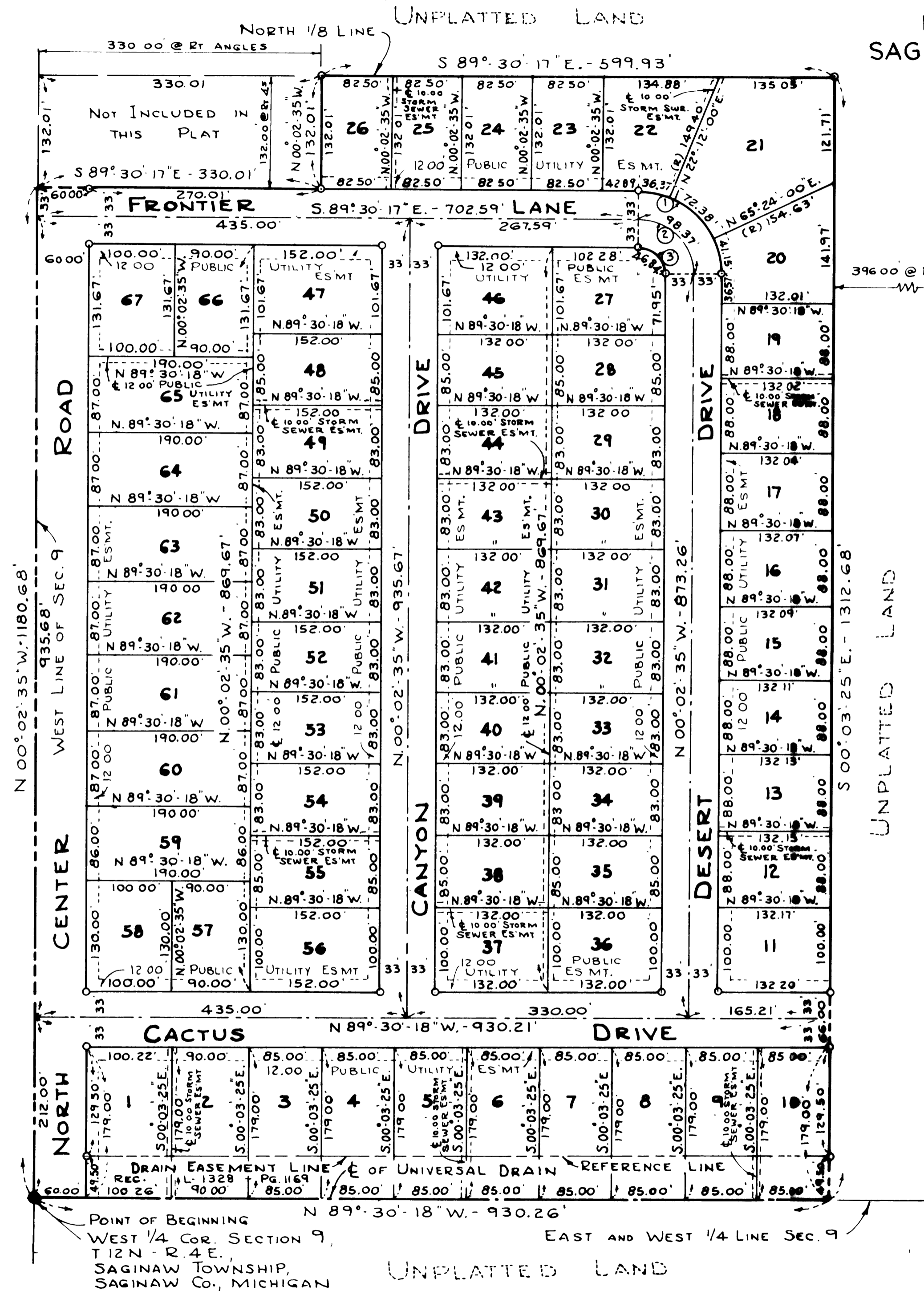


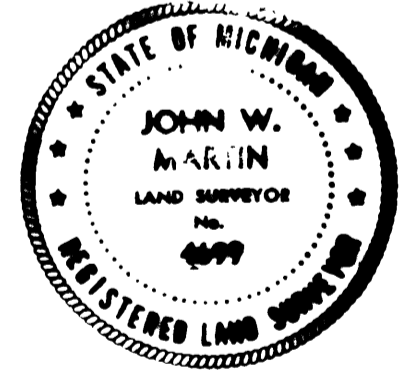
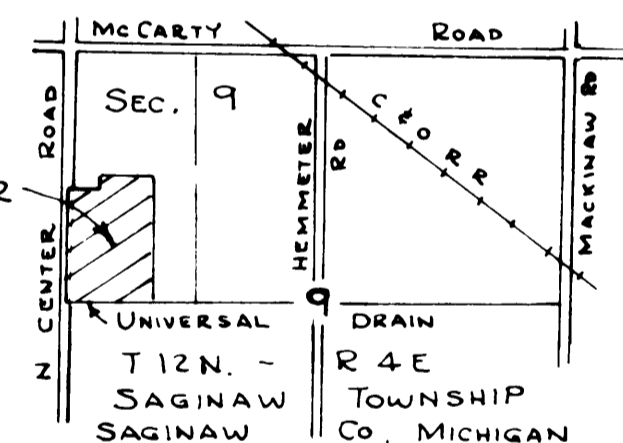
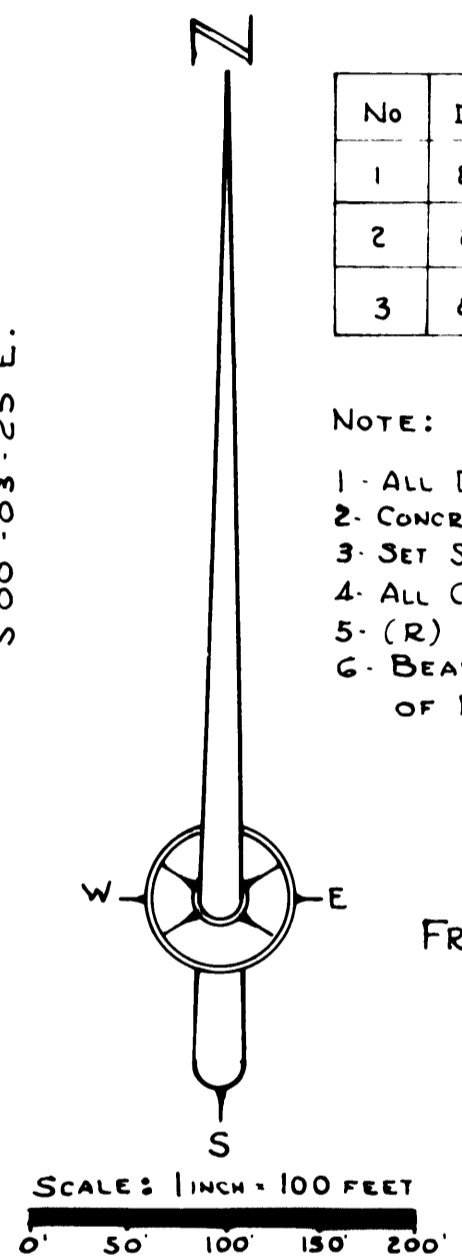
FRONTIER PARK

PART OF THE NORTHWEST 1/4 OF SECTION 9, T.12N. - R.4E.
SAGINAW TOWNSHIP, SAGINAW COUNTY, MICHIGAN



No	DELTA ANGLE	RADIUS	ARC	CHORD	CHD BEARING	TANGENT
1	89° 27' 42"	96.00'	149.90'	135.13'	S 44° 46' 26" E	95.10'
2	89° 27' 42"	63.00'	98.37'	88.68'	S 44° 46' 26" E	62.41'
3	89° 27' 42"	30.00'	46.84'	42.23'	S 44° 46' 26" E	29.72'

- NOTE:
- 1 - ALL DIMENSIONS ARE GIVEN IN FEET
 - 2 - CONCRETE MONUMENTS HAVE BEEN PLACED AT ALL POINTS MARKED "O"
 - 3 - SET SOLID IRON BARS 1/2" IN DIA. BY 18" IN LENGTH AT ALL LOT CORNERS
 - 4 - ALL CURVILINEAR MEASUREMENTS ARE ARC DISTANCES
 - 5 - (R) INDICATES A RADIAL LINE
 - 6 - BEARINGS ARE TRUE AS DETERMINED FROM AN OBSERVATION OF POLARIS ON MARCH 12, 1970



CERTIFIED TRUE COPY OF
RECORDED PLAT.
Loren E. Munroe
LOREN E. MUNROE
STATE TREASURER
Richard L. Tompkins
January 3, 1978