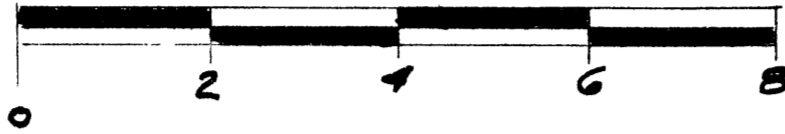
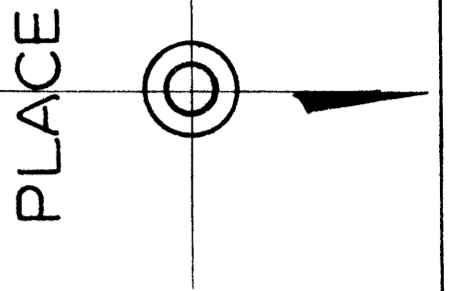


# GOLFVIEW SUBDIVISION

## SECTION 28, TOWN 12 NORTH, RANGE 4 EAST.

### SAGINAW TOWNSHIP, SAGINAW COUNTY, MICHIGAN.



SCALE 1 INCH = 200.0 FEET

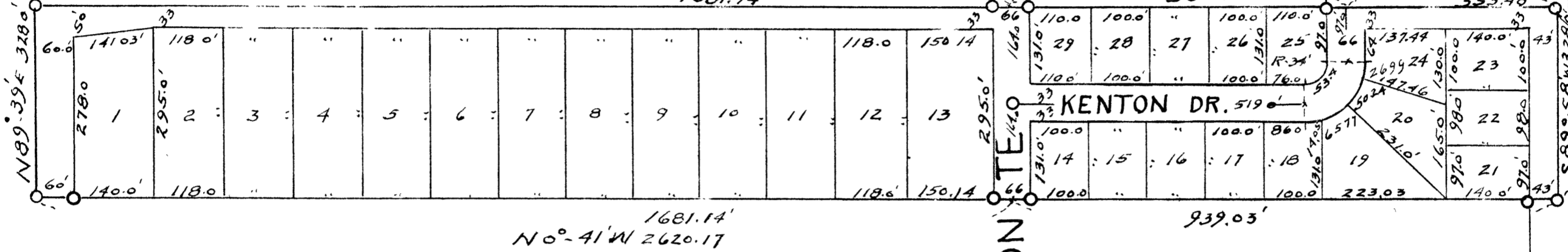
ALL DIMENSIONS ARE GIVEN IN FEET AND DECIMALS THEREOF.

CARL H PETERSON REG. C. E.

S 0°-41' E 2620.62

GOLFVIEW DR. 1681.14

GRATIOT AVE



POINT OF BEGINNING  
N 1/4 POST SEC. 28  
T 12 N. R 4 E

#### DEDICATION.

Know all men by these presents that we, THE CARMAN COMPANY, a partnership, composed of ARTHUR R. CARMAN and CARMAN A. WASHBURN, and VERA STEVENSON, an individual, as proprietors, have caused the land embraced in the annexed plat to be surveyed, laid out and platted to be known as the GOLFVIEW SUBDIVISION, a part of the northeast quarter, Section 28, T12N-R4E, Saginaw Township, Saginaw County, Michigan, and that all the streets as shown on said plat, are hereby dedicated to the use of the public. Carman Company.

*Beatrice Larner*  
BEATRICE LARNER  
*William E Crane*  
WILLIAM E CRANE

*Arthur R. Carman*  
Arthur R. Carman, Partner  
*Carman A. Washburn*  
Carman A. Washburn, Partner  
*Vera Stevenson*  
Vera Stevenson, individual.

#### ACKNOWLEDGMENT.

STATE OF MICHIGAN, SS  
COUNTY OF SAGINAW.

On this 12th day of June, 1956, before me, a Notary Public in and for said county, personally came the above named, ARTHUR R. CARMAN, CARMAN A. WASHBURN and VERA STEVENSON known to me, to be the persons, who executed the above dedication, and acknowledged the same to be their free act and deed.

*Mary Ellen Cline*  
Notary Public, Saginaw County.  
MARY ELLEN CLINE

My commission expires June 10, 1958

#### DESCRIPTION OF LAND PLATTED.

The land embraced in the annexed plat of the GOLFVIEW SUBDIVISION, a subdivision of the part of the northeast quarter of Section 28, T12N-R4E, Saginaw Township, Saginaw County, Michigan, and described as follows: Beginning at the north one quarter post, of Section 28, T12N-R4E, thence south 0 degrees, 41 minutes east, 2620.62 feet; thence north 89 degrees 39 minutes east, 328 feet; thence north 0 degrees, 41 minutes west, 2620.17 feet; thence south 89 degrees, 58 minutes west, 328 feet; to point of beginning.

#### SURVEYOR'S CERTIFICATE.

I hereby certify that the plat hereon delineated, is a correct one, and that permanent metal monuments, consisting of bars not less than one half inch in diameter, and 36 inches in length, or shorter bars of not less than one half inch in diameter, lap over each other at least 6 inches, with an over all length of not less than 36 inches, encased in a concrete cylinder at least 4 inches in diameter, and 36 inches in depth, having been placed at all points marked thus (O) as thereon shown at all angles in the boundary of the land platted; and at all intersections of lines of streets, and the lines of streets with the boundaries of the plat.

*Carl H. Peterson*  
Carl H. Peterson, Reg. C. E.

#### COPY

Register's Office  
Saginaw County, ss.  
Plat of Golfview Subdivision  
Saginaw Twp  
w. s. Rec. rd. this 13th day of  
June, 1956 at 9 o'clock  
A. M. of Plat  
of Page 14  
*Clara P. Jurk*  
Clara P. Jurk  
R. of Deeds

#### CERTIFICATE OF MUNICIPAL APPROVAL.

This plat was approved by the Township Board of Saginaw Township, Saginaw County, Michigan at a meeting held, Walter Dietzel April 2, 1956 1956.  
Walter Dietzel, Township Clerk.

#### CERTIFICATE OF APPROVAL BY THE CITY PLANNING COMMISSION.

This plat was approved by the City Planning Commission of the City of Saginaw, Michigan, at a meeting held, April 24, 1956 1956.  
*Russel O. Koenig*  
Russel O. Koenig, Planning Director.

#### CERTIFICATE OF APPROVAL BY THE BOARD OF COUNTY ROAD COMMISSIONERS.

This plat has been examined and was approved on the 22nd day of May, 1956, by the Saginaw Board of Road Commissioners, of Saginaw County, Michigan. The Board of County Road Commissioners of Saginaw County, Michigan, assume no responsibility for the improvement or maintenance of the roads or streets, shown on this plat, until such time as the following conditions have been met and approved by this Board. All roads and streets are to be graded and drained with necessary drainage structures installed and a roadway surface which shall consist of crushed stone or natural gravel, conforming to Michigan State Highway Department Specifications 21A. The surface shall have a minimum width of 18 feet and a compacted thickness of 6 inches. When crushed stone is used, the top 2 inches shall be 21A, with screenings added to provide a dense wearing course.

*Albert M. Wille*  
Albert M. Wille, Chairman.

*William M. Trim*  
William M. Trim, MEMBER.  
*Frank Dudewicz*  
Frank Dudewicz, Member.

#### CERTIFICATE OF APPROVAL BY THE COUNTY PLAT BOARD.

This plat was approved by the County Plat Board of Saginaw County, Michigan, this 6th day of June, 1956.

*Clara P. Jurk*  
Clara P. Jurk, Register of Deeds, Chairman.  
*Peter Girard*  
Peter Girard, Auditor.  
*George Cavanaugh*  
George Cavanaugh, Auditor.  
*William A. Case*  
William A. Case, Auditor.

#### COUNTY TREASURER'S CERTIFICATE RELATING TO TAXES.

I hereby certify that there are no tax liens or titles held by the State on the lands described hereon, and that there are no tax liens on titles held by individuals on said land, for the five years preceding the 12th day of June, 1956, and that the taxes for said period of five years, are all paid, as shown by the records of this office. This certificate does not apply to taxes, if any, now in the process of collection by Township, City or Village Collecting Officers.

*Carl C. Little*  
Carl C. Little, County Treasurer.

I hereby certify this copy is a true copy of map or plat forwarded the Register of deeds for recording.  
Date June 12, 1956  
FILED IN AUDITOR GENERAL'S OFFICE  
Date June 20, 1956  
EXAMINED AND APPROVED  
Date June 12, 1956  
*Frank S. MacElroy*  
Frank S. MacElroy, Auditor General.  
By W. L. MacElroy  
W. L. MacElroy, Plat Engineer.