

GREENDALE

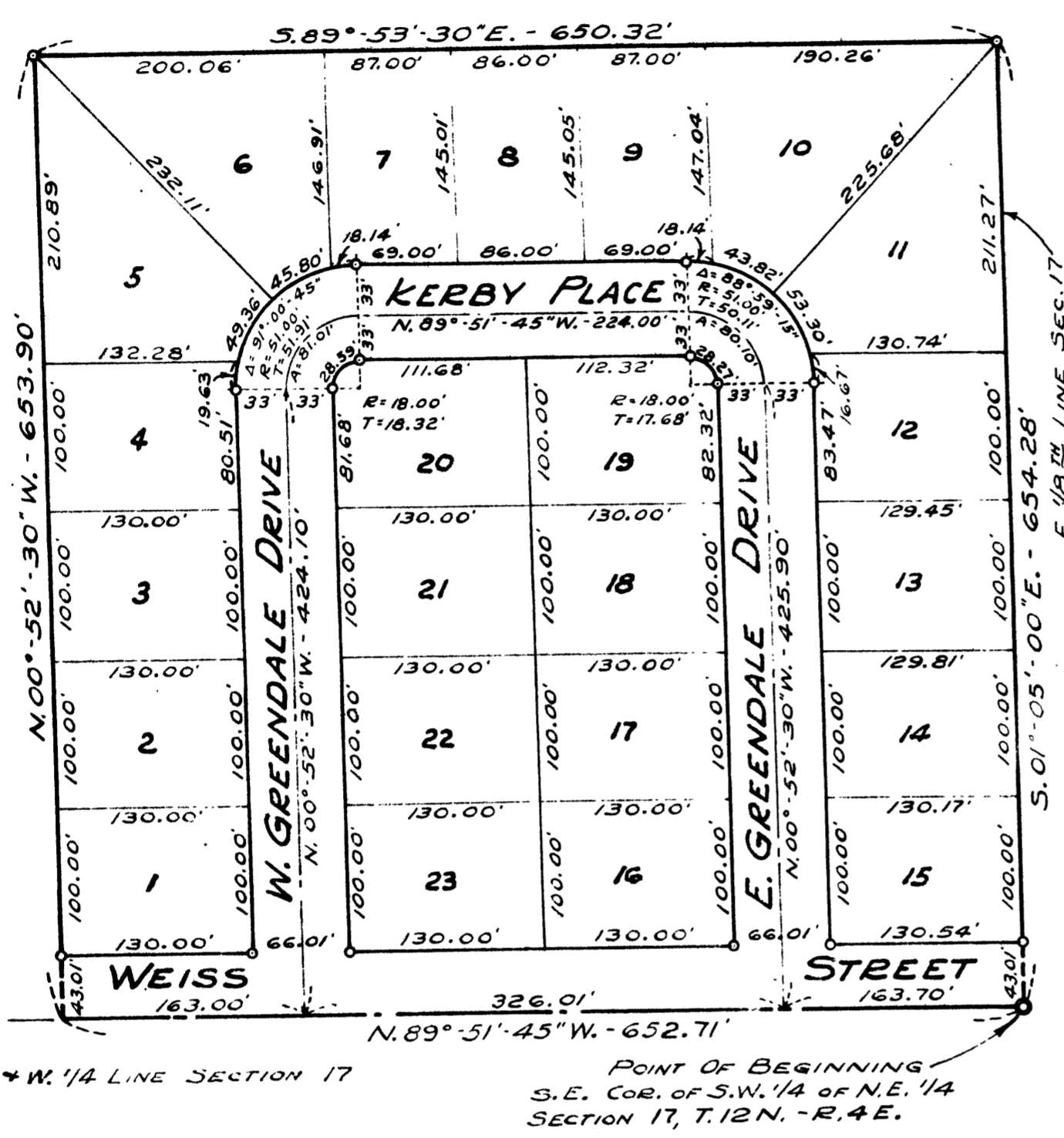
S.E. 1/4 OF S.W. 1/4 OF N.E. 1/4 SECTION 17, T.12 N.-R.4 E.
SAGINAW TOWNSHIP - SAGINAW COUNTY - MICHIGAN

SCALE: 1 INCH = 100 FEET
ALL DIMENSIONS ARE GIVEN IN FEET AND DECIMALS THEREOF
THE SPICER ENGINEERING COMPANY
SAGINAW, MICHIGAN
1954

COPY
Register's Office
Saginaw County, ss.
Plat of Greendale
Saginaw Township
was Recorded this 26 day of
November A.D., 1954 at 8:45 O'clock
A.M. in Liber. 8 of Plats
on Page 40
Clara P. Turek
Register of Deeds

I hereby certify this copy is a true copy of map or plat forwarded the Register of Deeds for recording.
Date November 22, 1954
Filed in Auditor General's Dept.
Date December 3, 1954
Examined and approved
Date November 22, 1954
John B. Martin
Auditor General

Clara P. Turek
Register of Deeds



DESCRIPTION
The land embraced in the annexed plat of GREENDALE, S.E. 1/4 of S.W. 1/4 of N.E. 1/4, Section 17, T.12 N.-R.4 E., Saginaw Township, Saginaw County, Michigan, is described as follows: Commencing at the Southeast corner of the Southwest 1/4 of the Northeast 1/4 of said Section 17; thence N.89°-51'-45"W., on the East and West 1/2 line of said Section 652.71 feet; thence N.00°-52'-30"W., on the East line of Ryan Subdivision, 653.90 feet; thence S.89°-53'-30"E., 650.32 feet to the East 1/8th line of Section 17; thence S.01°-05'-00"E., on said 1/8th line 654.28 feet to the point of beginning. 23 LOTS

SURVEYOR'S CERTIFICATE
I hereby certify that the plat hereon delineated is a correct one and that permanent metal monuments consisting of bars not less than one-half inch in diameter and 48 inches in length, or shorter bars of not less than one-half inch in diameter lapped over each other at least 6 inches with an over-all length of not less than 48 inches, encased in a concrete cylinder at least 4 inches in diameter and 48 inches in depth have been placed at points marked thus o as thereon shown at all angles in the boundaries of the land platted, at all intersections of streets, at points of curvature and points of tangency in street lines, and at the intersections of streets with the boundaries of the plat as shown on said plat.

Clifford H. Spicer
Clifford H. Spicer - Registered Land Surveyor

DEDICATION
KNOW ALL MEN BY THESE PRESENTS, That We, Harry C. Donajkowski and Mary Donajkowski, his wife, as proprietors, have caused the land embraced in the annexed plat to be surveyed, laid out and platted, to be known as GREENDALE, S.E. 1/4 of S.W. 1/4 of N.E. 1/4, Section 17, T.12 N.-R.4 E., Saginaw Township, Saginaw County, Michigan, and that the street, drives and place as shown on said plat are hereby dedicated to the use of the public.

Harry C. Donajkowski (L.S.)
Harry C. Donajkowski
Mary Donajkowski (L.S.)
Mary Donajkowski
Signed and Sealed in the Presence of
Otto G. Schiesswohl
Otto G. Schiesswohl
Clifford H. Spicer
Clifford H. Spicer

ACKNOWLEDGMENT
STATE OF MICHIGAN) ss.
County of Saginaw) ss.
On this 27th day of September, 1954, before me, a Notary Public, in and for said County, personally came the above named Harry C. Donajkowski and Mary Donajkowski, his wife, known to me to be the persons who executed the above dedication, and they acknowledged to me to be their free act and deed.
My Commission Expires May 16, 1958
Estelle M. Bryan
Estelle M. Bryan
Notary Public, Saginaw County, Michigan

CERTIFICATE OF APPROVAL BY BOARD OF COUNTY ROAD COMMISSIONERS
This plat has been examined and was approved on the 12th day of October, 1954, by the Saginaw County Board of Road Commissioners.

The Board of Road Commissioners of Saginaw County, Michigan, assumes no responsibility for the improvement or maintenance of the streets and roads shown on this plat until such time as they have been graded and drained with the necessary drainage structures installed and a gravel, slag, or cinder surface having a compacted thickness of at least 6 inches and a width of at least 18 feet has been applied and approved by this board.
Frank Dudewicz
Frank Dudewicz Chairman
William M. Trim
William M. Trim Member
Albert M. Wille
Albert M. Wille Member

CERTIFICATE OF APPROVAL BY CITY PLANNING COMMISSION
This plat was approved by the City Planning Commission of the City of Saginaw, Michigan, at a meeting held September 28, 1954 (Date)

Russel O. Koening
Russel O. Koening Director

COUNTY TREASURER'S CERTIFICATE RELATING TO TAXES
(Sec. 135, Act 206, 1893 as amended - Sec. 4134, C. L. 1915.)
Office of County Treasurer, Saginaw County

I hereby certify, that there are no tax liens or titles held by the State on the lands described hereon, and that there are no tax liens or titles held by individuals on said lands, for the five years preceding the 6th day of October, 1954, and that the taxes for said period of five years are all paid, as shown by the records of this office.

This certificate does not apply to taxes, if any, now in process of collection by township, city or village collecting officers.
Carl O. Little
Carl O. Little County Treasurer

CERTIFICATE OF MUNICIPAL APPROVAL
This plat was approved by the Township Board of the Township of Saginaw at a meeting held November 18, 1954 (Date)
Walter Dietzel
Walter Dietzel Clerk

CERTIFICATE OF APPROVAL BY THE COUNTY PLAT BOARD
This plat was approved by the County Plat Board of Saginaw County, Michigan this 16th day of November, 1954

Clara P. Turek
Clara P. Turek, Register of Deeds-Chairman
Peter Girard
Peter Girard Auditor
George Cavanagh
George Cavanagh Auditor
Charles E. Talaya, Jr.
Charles E. Talaya, Jr. Auditor