

CURVE DATA

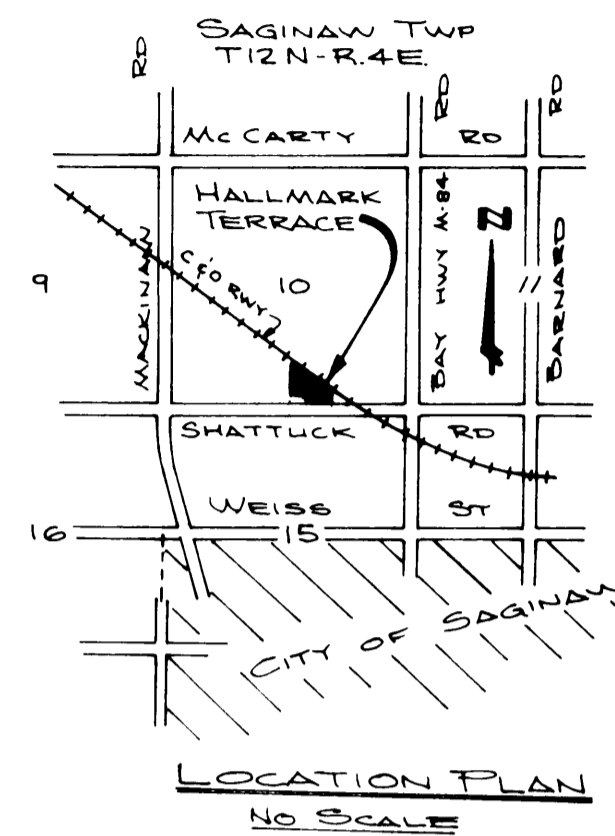
NO.	RADIUS	DELTA ANGLE	ARC	TANGENT	CHORD	CHORD BEARING
1	80.00'	65°38'-17"	91.65'	51.59'	86.72'	S 86°10'-19" E
2	80.00'	245°38'-17"	342.98'	—	134.46'	N 03°49'-41" E
3	146.00'	53°28'-14"	136.25'	73.54'	131.36'	S 26°37'-04" E
4	80.00'	53°28'-14"	74.66'	40.30'	71.98'	S 26°37'-04" E
5	113.00'	53°28'-14"	105.46'	56.92'	101.67'	S 26°37'-04" E

HALLMARK TERRACE

PART OF THE S.E. 1/4 OF SEC. 10, T.12N.-R.4E.

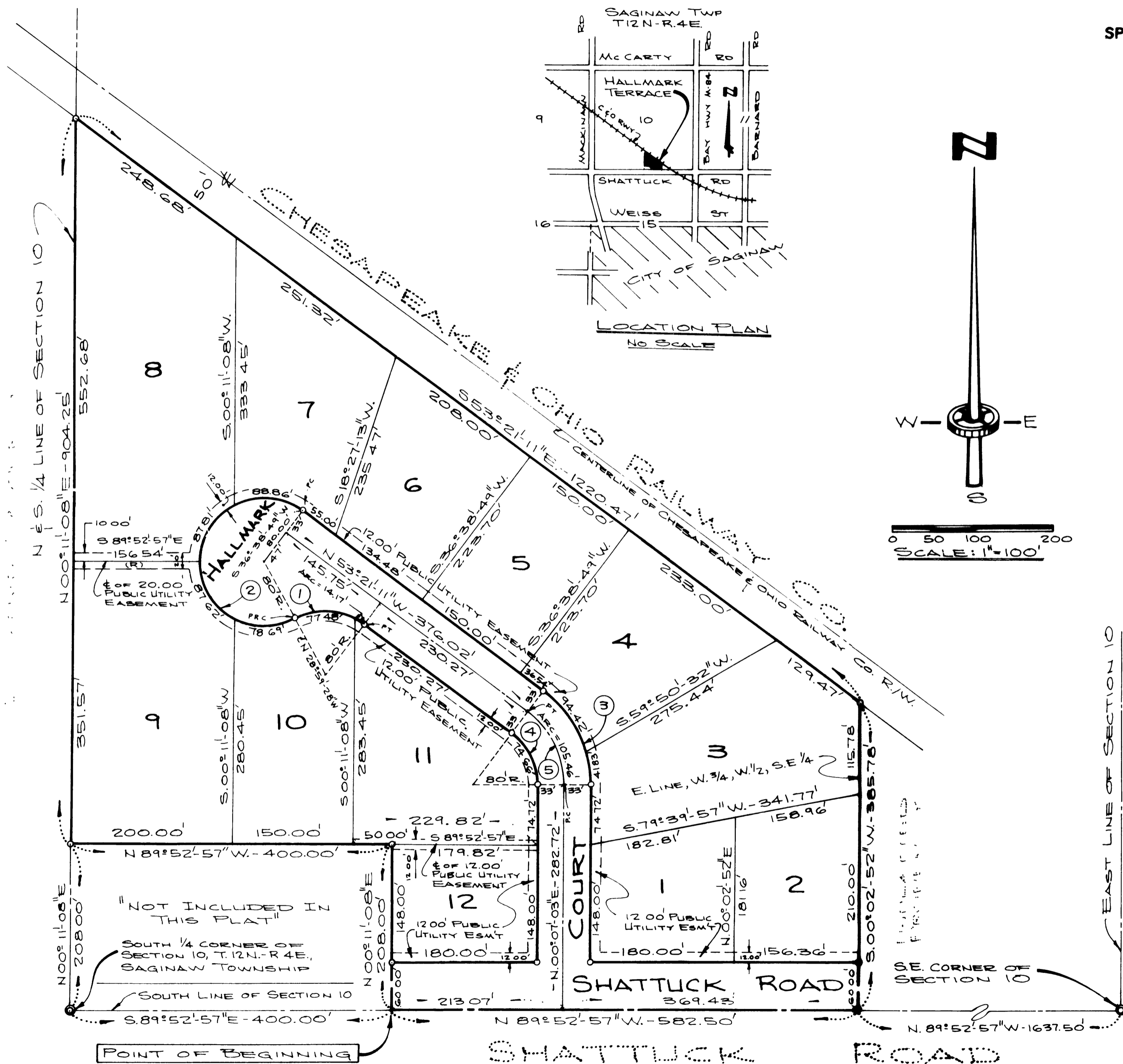
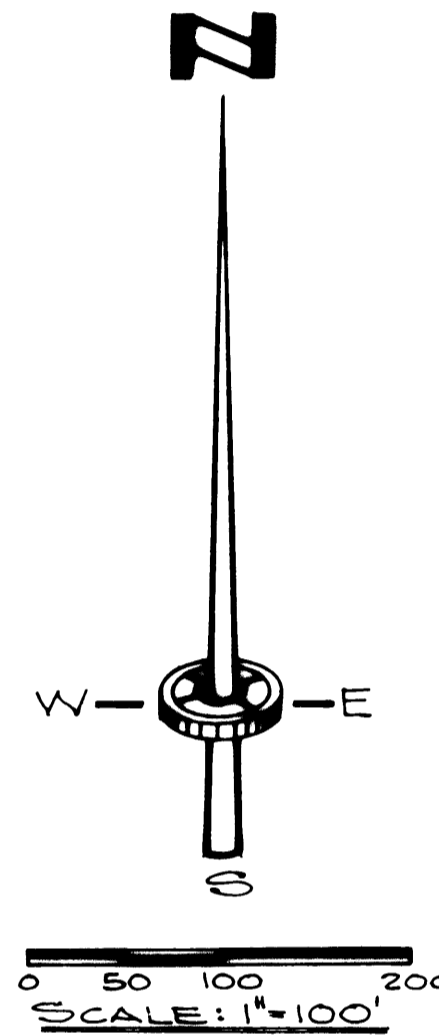
SAGINAW TOWNSHIP, SAGINAW COUNTY, MICHIGAN.

SPICER ENGINEERING COMPANY
SAGINAW, MICHIGAN
OCTOBER, 1972



LEGEND

- 1- ALL DIMENSIONS ARE GIVEN IN FEET.
- 2- ALL CURVILINEAR MEASUREMENTS ARE ARC DISTANCES
- 3- CONCRETE MONUMENTS HAVE BEEN PLACED AT ALL POINTS MARKED "O"
- 4- SET SOLID IRON BARS 1/2" IN DIAMETER BY 18" IN LENGTH AT ALL LOT CORNERS
- 5- BEARINGS WERE ESTABLISHED FROM THE RECORDED PLAT OF "BAY WOODS ACRES No. TWO, LIBER 18, PAGE 29-30.
- 6- (2) - INDICATES CURVE NUMBER (SEE CURVE DATA TABLE HEREON.)
- 7- (R) INDICATES A RADIAL LINE



EAST LINE OF SECTION 10
BAY HWY M-84 ROAD