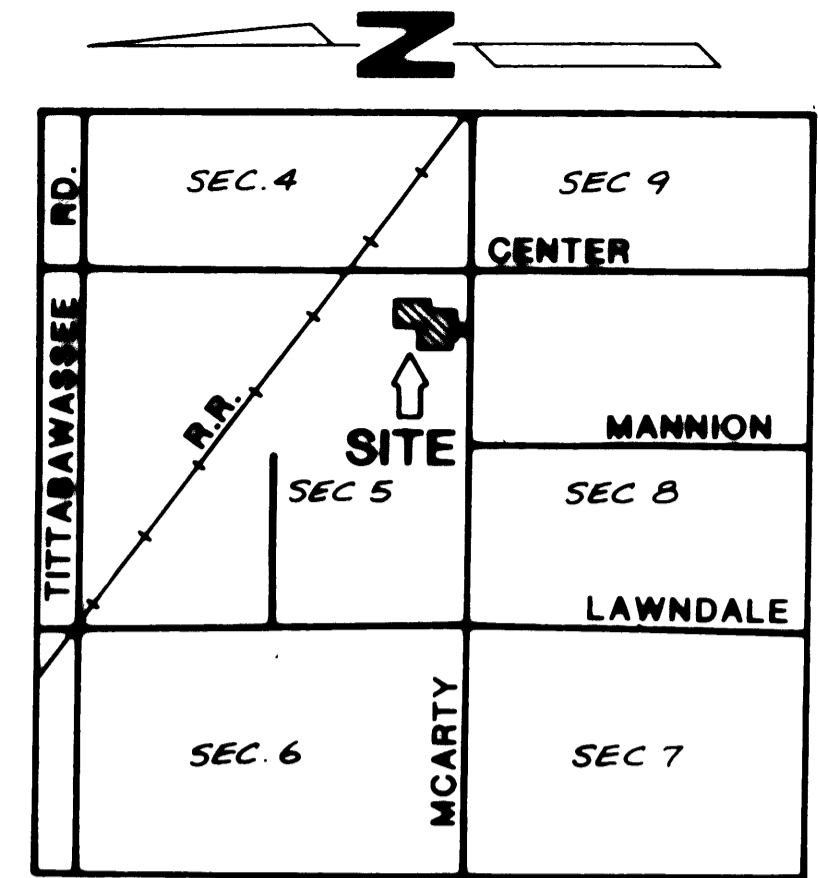
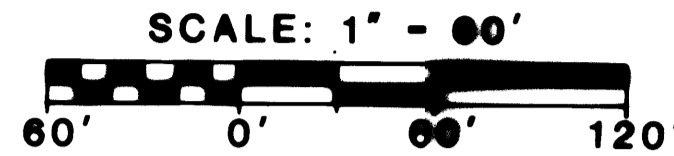


# HARVEST VIEW FARMS

A PART OF THE SOUTHEAST 1/4 OF THE SOUTHEAST 1/4 OF SECTION 5, T12N., -R4E., SAGINAW TOWNSHIP, SAGINAW COUNTY, MICHIGAN



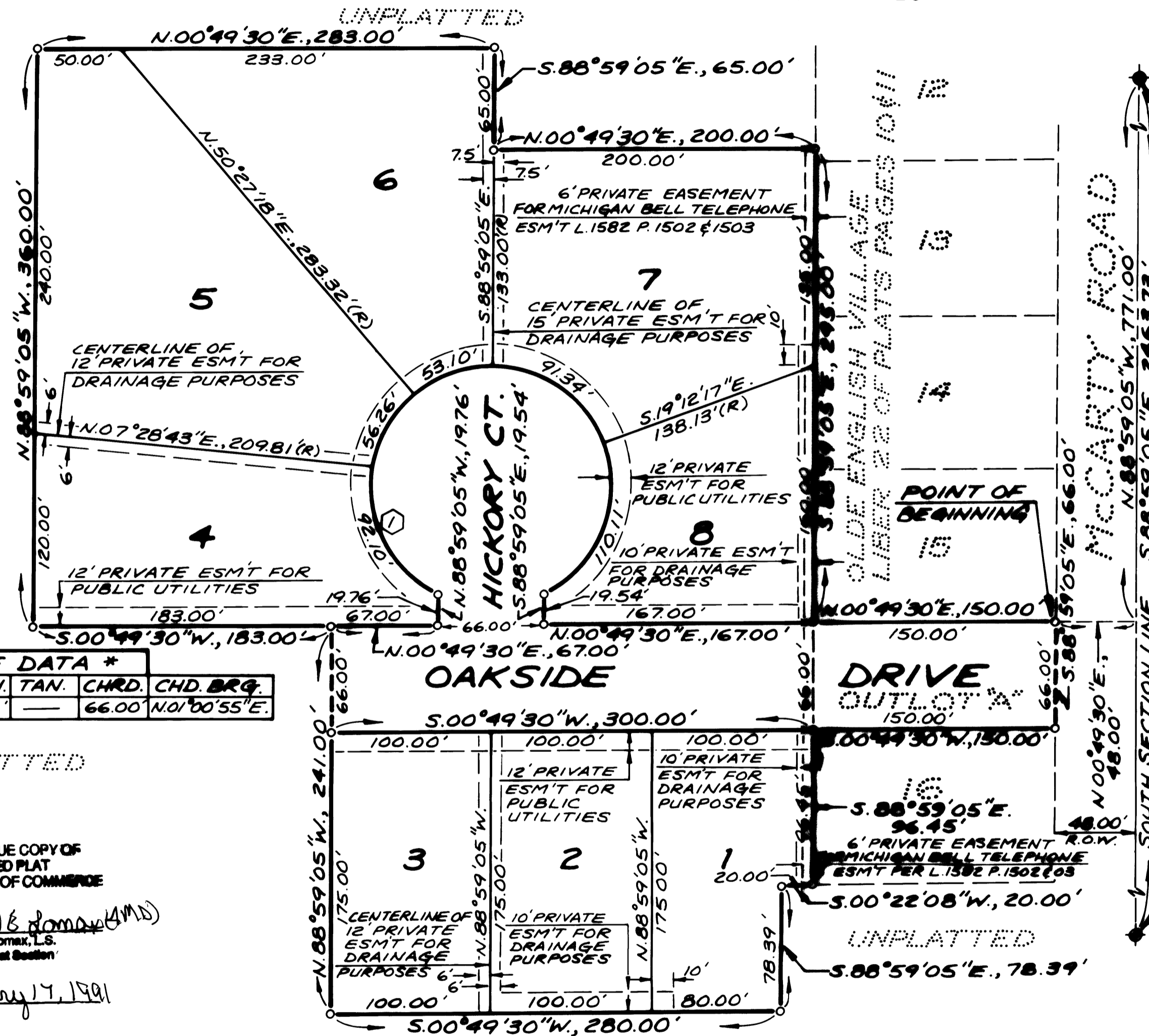
## LOCATION MAP

SOUTHEAST CORNER SECTION 5  
T.12N., R.4E., SAGINAW TWP.,  
SAGINAW COUNTY, MICHIGAN  
CORNER WITNESSES RECORDED IN LIBER 2 PAGE 6

### LEGEND

1. ALL DIMENSIONS ARE IN FEET.
2. ALL CURVE DIMENSIONS ARE ARC LENGTHS.
3. CONC. MONUMENTS, 1/2" IRON BARS 36" LONG ENCASED IN 4" DIA. CONC. HAVE BEEN SET AT ALL POINTS MARKED THUS:  $\circ$  SET
4. ALL LOT CORNERS HAVE BEEN MARKED WITH 3/4" IRON PIPES 18" IN LENGTH WITH YELLOW CAPS MARKED THUS:  $\circ$  L E D Y E N G . R . L . S . 2 1 5 7 5
5. (R) - INDICATES LINES ARE RADIAL.
6. BASIS OF BEARING IS REFERENCED TO THE RECORDED PLAT OF "OLDE ENGLISH VILLAGE" AS RECORDED IN LIBER 22 PAGE 10 OF PLATS OF SAGINAW COUNTY RECORDS.

SOUTH 1/4 CORNER SECTION 5  
T.12N., R.4E., SAGINAW TWP.,  
SAGINAW COUNTY, MICHIGAN  
CORNER WITNESSES RECORDED IN LIBER 1 PAGE 49



* CURVE DATA *					
NO.	DELTA	RAD.	LGTH.	TAN. CHRD.	CHD. BRG.
1	307°47'31"	75.00'	402.91'	—	66.00' N.01°00'55"E.

UNPLATTED

CERTIFIED TRUE COPY OF  
RECORDED PLAT  
BY DEPARTMENT OF COMMERCE

By Richard E. Lomax (M.D.)  
Richard E. Lomax, L.S.  
Manager, Plat Section  
Date January 7, 1991

UNPLATTED



280 SOUTH MAIN ST. • FREELAND, MI 48623  
PH (517) 695-2593/FAX (517) 695-2150

Duane F. Ledy  
Duane F. Ledy, R.L.S. 21575



### RECORDING CERTIFICATE

STATE OF MICHIGAN )  
SAGINAW COUNTY )

THIS PLAT WAS RECEIVED FOR RECORD ON THE 28 DAY OF Jan, 19 90 AT 7:00 P.M. AND RECORDED IN LIBER 24 OF PLATS ON PAGE 27, 28 & 29.

Michael M. Dodak  
MICHAEL M. DODAK  
REGISTER OF DEEDS