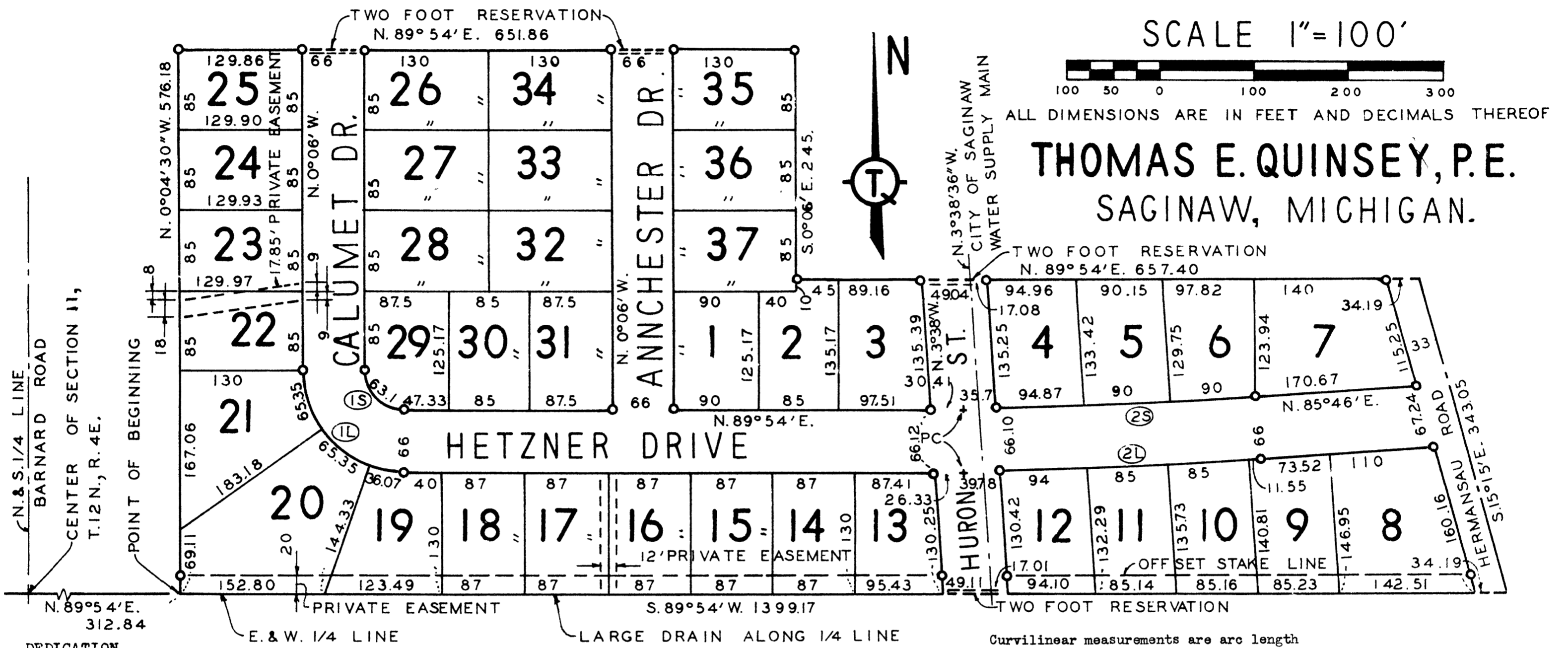


# HETZNER SUBDIVISION

## SEC. II, T.12N., R.4E., SAGINAW TOWNSHIP, SAGINAW COUNTY, MICHIGAN.



**DEDICATION**

KNOW ALL MEN BY THESE PRESENTS, That we, ELMER G. HETZNER and MILDRED M. HETZNER, his wife, as proprietors, have caused the land embraced in the annexed plat to be surveyed, laid out and platted to be known as HETZNER SUBDIVISION, Section 11, T.12N., R.4E., Saginaw Township, Saginaw County, Michigan and that the street, road and drives as shown on said plat are hereby dedicated to the use of the public, excepting however, from this dedication, land designated "Two Foot Reservation", such land to be dedicated automatically for street purposes at such time as street extensions adjacent thereto are dedicated in adjoining property and the private easements indicated on said plat are not dedicated to the public but the right to use said easements are hereby reserved for public utilities and for any other uses as designated hereon and no permanent structures are to be erected within the lines of said easements.

CURVE DATA						
Curve No.	T	R	D	Δ	Chord	Chord Bearing
(18)	40.17	40.17	142.6333	90°	56.81	S.45° 06' E.
(11)	106.17	106.17	53.96609	90°	150.15	S.45° 06' E.
(28)	155.35	4305.02	1.330907	4° 08'	310.50	N.87° 50' E.
(21)	157.73	4371.02	1.310811	4° 08'	315.26	N.87° 50' E.

Signed and Sealed  
in Presence of

*Lois L. Quinsey*  
Lois L. Quinsey  
*T. E. Quinsey*  
T. E. Quinsey

*Elmer G. Hetzner*  
Elmer G. Hetzner  
*Mildred M. Hetzner*  
Mildred M. Hetzner

**SURVEYOR'S CERTIFICATE**

I HEREBY CERTIFY that the plat hereon delineated is a correct one and that permanent metal monuments consisting of bars not less than one-half inch in diameter and 36 inches in length, or shorter bars of not less than one-half inch in diameter lapped over each other at least 6 inches with an over-all length of not less than 36 inches, encased in a concrete cylinder at least 4 inches in diameter and 36 inches in depth have been placed at points marked thus (o) as thereon shown at all angles in the boundaries of the land platted, at all the intersections of streets, intersections of alleys or of streets and alleys, and at the intersections of streets and alleys with the boundaries of the plat as shown on said plat.

*Thomas E. Quinsey*  
THOMAS E. QUINSEY No. 7637  
Registered Professional Civil Engineer

**COUNTY TREASURER'S CERTIFICATE RELATING TO TAXES**  
Office of County Treasurer, Saginaw County

I hereby certify, that there are no tax liens or titles held by the State on the lands described hereon, and that there are no tax liens or titles held by individuals on said lands, for the five years preceding the 1st day of May, 1961 and that the taxes for said period of five years are all paid, as shown by the records of this office.

This certificate does not apply to taxes, if any, now in process of collection by township, city or village collecting officers.

*Raymond L. Bankers*  
Raymond L. Bankers (County Treasurer)

**ACKNOWLEDGMENT**

STATE OF MICHIGAN)  
County of Saginaw) ss

On this 27th day of July, 1961, before me, a Notary Public, in and for said county, personally came the above named ELMER G. HETZNER and MILDRED M. HETZNER, his wife, known to me to be the persons who executed the above dedication, and acknowledged the same to be their free act and deed.

*Lois L. Quinsey*  
Lois L. Quinsey  
Notary Public, Saginaw County, Michigan  
My Commission Expires September 17, 1963.

**APPROVAL BY BOARD OF COUNTY ROAD COMMISSIONERS**

This plat has been examined and was approved on the 27th day of July, 1961 by the Saginaw County Board of Road Commissioners.

The Board of County Road Commissioners of Saginaw County, Michigan, assume no responsibility for the improvement or maintenance of the Street or Drives shown on this Plat until such time as the following conditions have been met and approved by this Board.

All Streets and Drives are to be graded and drained with necessary drainage structures installed and a roadway surface, which shall consist of crushed stone or natural gravel conforming to Michigan State Highway Department Specifications 21A. The surface shall have a minimum width of 18 feet and a compacted thickness of 6 inches. When crushed stone is used the top 2 inches shall be 21A with screenings added to provide a dense wearing course.

*William M. Trim* (Chairman)  
*Harold Bauer* (Member)  
*John F. McInnis* (Member)

*Malcolm W. Whitford* (Secretary)

August 28, 1961

**DESCRIPTION OF LAND PLATTED**

The land embraced in the annexed plat of HETZNER SUBDIVISION, Section 11, T.12N., R.4E., Saginaw Township, Saginaw County, Michigan is described as follows: Beginning at a point on the E. & W. 1/4 Line of Section 11, T.12N., R.4E., N. 89° 54' E. of the center of said Section 11, 312.84 ft.; thence N. 0° 04' 30" W. parallel with the N. & S. 1/4 Line of said Section 11, 576.18 ft.; thence N. 89° 54' E., 651.86 ft.; thence S. 0° 06' E., 245 ft.; thence N. 89° 54' E., 657.40 ft. to the centerline of Hermansau Road, thence S. 15° 15' E. along the centerline of said road 343.05 ft. to the E. & W. 1/4 Line of said Section; and thence S. 89° 54' W. along said 1/4 Line 1399.17 ft. to the point of beginning. This plat contains 37 lots numbered consecutively from 1 thru 37 inclusive.

**CERTIFICATE OF APPROVAL BY THE CITY PLANNING COMMISSION**

This plat was approved by the CITY PLANNING COMMISSION OF THE CITY OF SAGINAW, MICHIGAN

**APPROVAL BY COUNTY PLAT BOARD**

This plat was approved on the 27th day of July, 1961 by the Saginaw County Plat Board.

*Walter D. Strobel*  
Walter D. Strobel Register of Deeds, Chairman  
*John H. Deibel*  
John H. Deibel Auditor  
*Benjamin G. Wacker*  
Benjamin G. Wacker Auditor  
*William H. Baughman*  
William H. Baughman Auditor  
*Herbert J. Dietrich*  
Herbert J. Dietrich Drain Commissioner

**CERTIFICATE OF MUNICIPAL APPROVAL**

This plat was approved by the TOWNSHIP BOARD OF THE TOWNSHIP OF SAGINAW at a meeting held

on the first day of May, 1961.  
*Richard H. Stroebel*  
Richard H. Stroebel (Clerk)

was Recorded this 29th day of August, 1961, at 5:00 o'clock P.M. in Liber 12 of plat 27.

*Walter D. Stroebel*