

copy

HILL CREST SUBDIVISION

BEING PART OF THE NE 1/4 OF THE NW 1/4 OF SEC. 13, T.12.N.R.3.E.
SAGINAW TOWNSHIP,
SAGINAW COUNTY MICHIGAN

SCALE 1 INCH = 100 FEET

All dimensions are in feet & decimals thereof.

KNOW ALL MEN BY THESE PRESENTS; That we Fredrick M. Bullock and Mabel E. Bullock his wife as proprietors have caused the land embraced in the annexed plat to be surveyed, laid out, and platted, to be known as "Hill Crest Subdivision" being part of the NE 1/4 of the NW 1/4 of Sec. 13, T.12. N.R.3.E., Saginaw County, Michigan and that the streets as shown on said plat are hereby dedicated to the use of the public.

Witness: *William R. Howson* } *William R. Howson*
Edith Case } *Edith Case*
Mabel E. Bullock } *Mabel E. Bullock*
 Fredrick M. Bullock L.S.
 Mabel E. Bullock L.S.

STATE OF MICHIGAN } ss.
 COUNTY OF SAGINAW }

On this 17th day of March 1941 before me a Notary Public in and for said County, personally came the above Fredrick M. Bullock and Mabel E. Bullock his wife known to me to be the persons who executed the above dedication, and acknowledged the same to be their free act and deed.

My Commission Expires July 12 1941
David A. Nicol
 Notary Public, Saginaw Co. Mich.

DESCRIPTION

The land embraced in the annexed plat of "Hill Crest Subdivision" being part of the NE 1/4 of the NW 1/4 of Section 13, T.12. N.R.3.E., Saginaw County, Michigan is described as follows: beginning at the N 1/4 Post of Section 13, T.12. N.R.3.E., thence S1°55'W on the 1/4 line of said section, 658' to the centerline of U.S. 10 Highway so called; thence N50°20'W on centerline of said Highway 685.5'; thence N27°07'E, 267' to the N line of said Section 13; thence S87°40'E on said N line of section, 428.5' to the place of beginning.

SURVEYOR'S CERTIFICATE

I hereby certify that the plat hereon delineated is a correct one and that permanent monuments consisting of 1/2 inch pipe 48 inches long set in concrete base 4 inches in diameter and 48 inches in depth have been placed at points marked as shown at all angles in the boundaries of land platted.

David A. Nicol
 David A. Nicol
 Registered Civil Engineer.

CERTIFICATE OF APPROVAL OF TOWNSHIP BOARD.

This plat was approved by the Township Board of the Township of Saginaw Saginaw County, Michigan at a meeting held on the 16 day of June 1941.

George Emerick
 George Emerick
 Chairman

CERTIFICATE OF BOARD OF COUNTY ROAD COMMISSION.

This plat was approved by the County Road Commission Saginaw County, Michigan at a meeting held on the 22 day of April 1941.

Chas. G. Galt
 Chas. G. Galt
 Chairman

CERTIFICATE OF APPROVAL BY STATE HIGHWAY DEPT.

This plat was approved by the State Highway Department of the State of Michigan on the day of 1940.

CERTIFICATE OF APPROVAL OF COUNTY AUDITOR'S.

This plat was approved by the County Board of Auditors of Saginaw County, Michigan at a meeting held on the 18th day of April 1941.

Fred Zwerk
 Fred Zwerk
 Chairman.

Geo. Cavanaugh
 Geo. Cavanaugh

COUNTY TREASURER'S CERTIFICATE.

Office of the County Treasurer }
 Saginaw County Michigan. }

I hereby certify that there are no tax liens or title held by the State on lands described below, and that there are no tax liens or titles held by individuals on said land, for five years preceding the 4th day of December 1940 and that the taxes for the said period of five years are paid as shown by records of this office.

This certificate does not apply to taxes if any now in process of collection by townships, city or village collecting officers.

Beginning at the N 1/4 Post of section 13, T.12. N.R.3.E, thence S1°55'W on the 1/4 line of said section 13, 658' to the centerline of U.S. 10 Highway so called; thence N50°20' to the centerline of said Highway 685.5'; thence N27°07'E, 267' to the N line of said section 13; thence S87°40'E on said N line of sec. 13, 428.5' to the place of beginning.

Mayme Jewell Purdy
 County Treasurer, Saginaw Co. Mich.

Examined and Approved

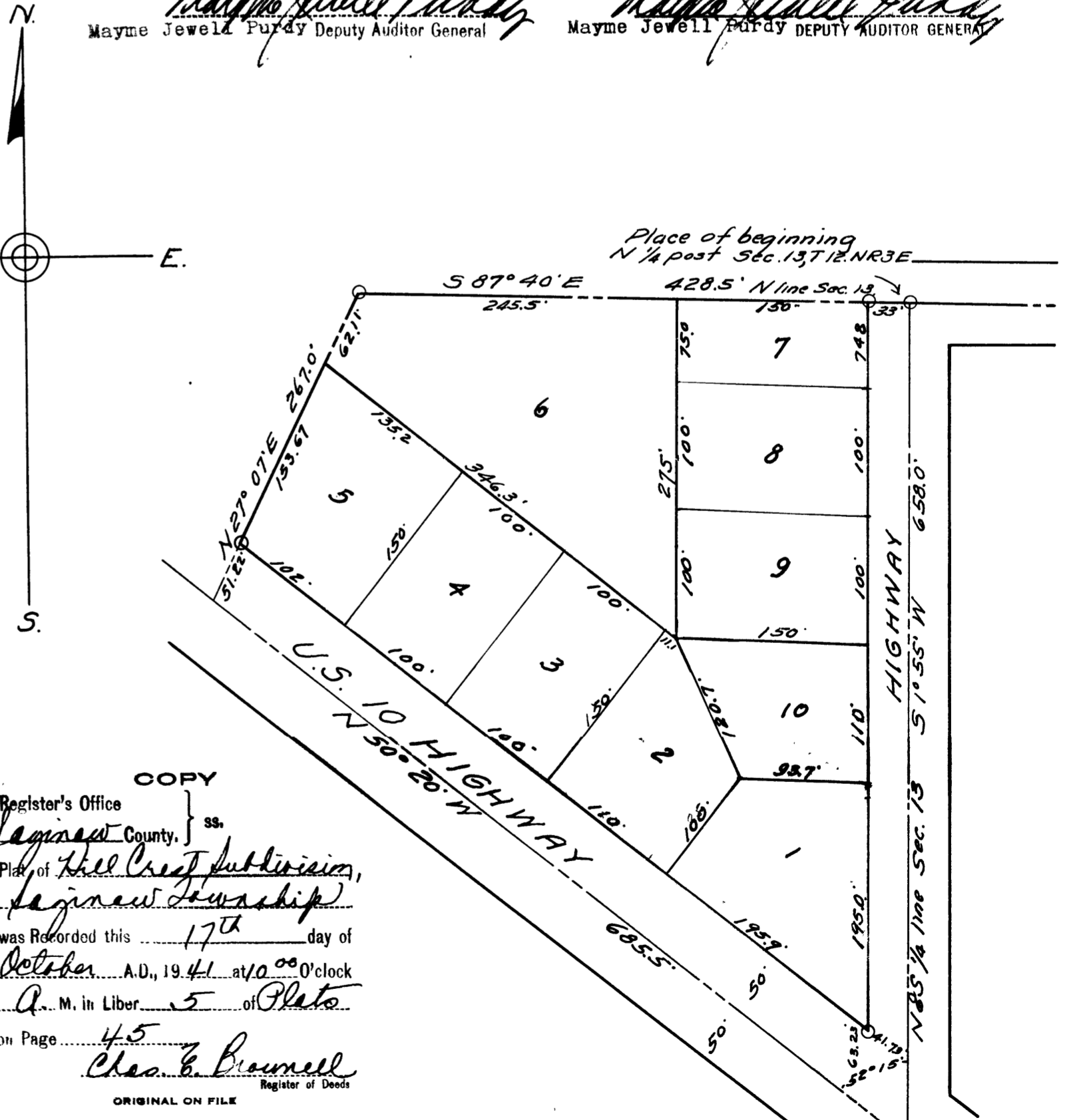
October 16, 1941

Mayme Jewell Purdy
 Mayme Jewell Purdy Deputy Auditor General

FILED IN AUDITOR GENERAL'S DEPT.

October 23, 1941

Mayme Jewell Purdy
 Mayme Jewell Purdy DEPUTY AUDITOR GENERAL



COPY
 Register's Office } ss.
 Saginaw County, }
 Plat of Hill Crest Subdivision,
 Saginaw Township,
 was Recorded this 17th day of
 October, A.D., 1941, at 10:00 o'clock
 A.M. in Liber 5 of Plate
 on Page 45
Chas. E. Brunell
 Register of Deeds

Finding that width and location of State Trunk Line and Feder-aid Roads conform to plans on file, I hereby approve this plat.
G. Donald Kennedy
 G. Donald Kennedy
 State Highway Commissioner

I HEREBY CERTIFY THAT THIS COPY IS A TRUE COPY OF THE MAP OR PLAT FORWARDED THE REGISTER OF DEEDS FOR RECORDING.

COMPARED October 16, 1941
Mayme Jewell Purdy
 Mayme Jewell Purdy DEPUTY AUDITOR GENERAL