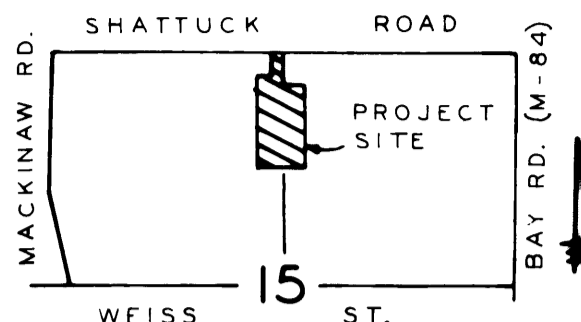


HOOTON ACRES SUBDIVISION NO. 2

PART OF THE NW 1/4 AND PART OF THE NE 1/4, SECTION 15, T12N, R4E, SAGINAW TOWNSHIP, SAGINAW COUNTY, MICH.



LOCATION MAP

REGISTER'S OFFICE
SAGINAW COUNTY, MICHIGAN) SS

RECEIVED FOR RECORD THIS 10
DAY OF December A.D. 1980
AT 2:30 O'CLOCK pm AND RECORDED
IN LIBER 22 OF PLATS
ON PAGES 24

Kathryn J. Gage
KATHRYN J. GAGE, REGISTER



1. BEARINGS WERE ESTABLISHED FROM THE RECORDED PLAT OF HOOTON ACRES SUBDIVISION LIBER 12, PAGE 31.
2. LOT CORNERS HAVE BEEN MARKED WITH "T" SECTIONED IRONS 18 INCHES IN LENGTH.
3. CONCRETE MONUMENTS HAVE BEEN PLACED AT ALL POINTS MARKED "O".
4. ALL DIMENSIONS ARE IN FEET.

CERTIFICATE OF COUNTY ROAD COMMISSIONERS

APPROVED ON Sept. 9, 1980 AS
COMPLYING WITH SECTION 183 OF ACT 288,
P.A. 1967 AND THE APPLICABLE PUBLISHED
RULES AND REGULATIONS OF THE BOARD OF
ROAD COMMISSIONERS OF SAGINAW COUNTY.

Albert Janson
ALBERT JANSON, CHAIRMAN

Lloyd C. Falkenhagen
LLOYD C. FALKENHAGEN, MEMBER

Hubert Wendling
HUBERT WENDLING, MEMBER

COUNTY DRAIN COMMISSIONER'S CERTIFICATE

APPROVED ON July 3, 1980 AS
COMPLYING WITH SECTION 192 OF ACT 288,
P.A. 1967 AND THE APPLICABLE RULES AND
REGULATIONS PUBLISHED BY MY OFFICE IN
THE COUNTY OF SAGINAW.

James A. Koski
JAMES A. KOSKI, DRAIN COMMISSIONER

PROPRIETOR'S CERTIFICATE - INDIVIDUALS

WE AS PROPRIETOR'S CERTIFY THAT WE CAUSED THE LAND EMBRACED IN THIS PLAT TO BE SURVEYED, DIVIDED, MAPPED AND DEDICATED AS REPRESENTED IN THIS PLAT AND THAT THE STREETS ARE FOR THE USE OF THE PUBLIC, THAT THE PUBLIC UTILITY EASEMENTS ARE PRIVATE EASEMENTS AND ALL OTHER EASEMENTS ARE FOR THE USES SHOWN ON THE PLAT.

WITNESS

George F. Gronewold, Jr.
GEORGE F. GRONEWOLD, JR.

Jaynell S. Thomas
JAYNELL S. THOMAS

Arthur M. Fisher, Jr.
ARTHUR M. FISHER, JR.
4419 EL MONTE
SAGINAW, MICHIGAN 48603

Louise S. Fisher
LOUISE S. FISHER

SURVEYOR'S CERTIFICATE

I, ARTHUR H. LEACH, SURVEYOR, CERTIFY:

THAT I HAVE SURVEYED, DIVIDED, AND MAPPED THE LAND SHOWN ON THIS PLAT DESCRIBED AS FOLLOWS: "HOOTON ACRES SUBDIVISION NO. 2", PART OF THE NW 1/4 AND PART OF THE NE 1/4, SECTION 15, T 12 N - R 4 E, SAGINAW TOWNSHIP, SAGINAW COUNTY, MICHIGAN, COMMENCING AT THE NORTH 1/4 CORNER, SECTION 15, T 12 N - R 4 E, THENCE S 0° 00' 15" E - 210.07 FEET ALONG THE NORTH-SOUTH 1/4 LINE, THENCE S 89° 05' 12" E - 165.00 FEET TO THE WEST LINE OF LOT 2, "WILTSE PLAT", AS RECORDED IN LIBER 11, PAGE 48, SAGINAW COUNTY RECORDS, THENCE S 0° 00' 15" E - 450.00 FEET ALONG THE WESTERLY LINE OF SAID "WILTSE PLAT" TO THE NORTHEAST CORNER OF LOT 8, "HOOTON ACRES SUBDIVISION", AS RECORDED IN LIBER 12, PAGE 31, SAGINAW COUNTY RECORDS, THENCE N 89° 03' 45" W - 165.00 FEET ALONG THE NORTHERLY SIDE OF SAID "HOOTON ACRES SUBDIVISION", THENCE N 88° 38' 15" W - 198.00 FEET TO THE NORTHWEST CORNER OF LOT 9, "HOOTON ACRES SUBDIVISION", THENCE N 0° 00' 15" W - 480.00 FEET, THENCE S 88° 38' 15" E - 131.98 FEET, THENCE N 0° 00' 15" W - 180.00 FEET TO THE NORTH SECTION LINE, THENCE S 88° 38' 15" E - 66.02 FEET TO THE POINT OF BEGINNING, CONTAINING 11 LOTS, NUMBERED 16 THROUGH 26 INCLUSIVE, CONTAINING 4.15 ACRES, MORE OR LESS.

THAT I HAVE MADE SUCH SURVEY, LAND-DIVISION AND PLAT BY THE DIRECTION OF THE OWNERS OF SUCH LAND.

THAT SUCH PLAT IS A CORRECT REPRESENTATION OF ALL THE EXTERIOR BOUNDARIES OF THE LAND SURVEYED AND THE SUBDIVISION OF IT.

THAT THE REQUIRED MONUMENTS AND LOT MARKERS HAVE BEEN LOCATED IN THE GROUND AS REQUIRED BY SECTION 125 OF THE ACT.

THE ACCURACY OF SURVEY IS WITHIN THE LIMITS REQUIRED BY SECTION 126 OF THE ACT.

THAT THE BEARINGS SHOWN ON THE PLAT ARE EXPRESSED AS REQUIRED BY SECTION 126 (3) OF THE ACT AND AS EXPLAINED IN THE LEGEND.

7-1-80
DATE

LEACH ENGINEERING, INC.



Arthur H. Leach PRESIDENT
BY ARTHUR H. LEACH - R.L.S. NO. 7236
3880 GROTTO ROAD
BRIDGEPORT, MICHIGAN 48722

CERTIFIED TRUE COPY OF
RECORDED PLAT
BY DEPARTMENT OF COMMERCE

By *Richard E. Lomax, Jr.*
Richard E. Lomax, L.S.
Manager Plat Section

DATE April 22, 1981

ACKNOWLEDGEMENTS - INDIVIDUALS

STATE OF MICHIGAN)
SAGINAW COUNTY) SS

PERSONALLY CAME BEFORE ME THIS 2nd DAY OF July, 1980
THE ABOVE NAMED ARTHUR M. FISHER, JR. AND LOUISE S. FISHER, HIS
WIFE, TO ME KNOWN TO BE THE PERSONS WHO EXECUTED THE FOREGOING
INSTRUMENT AND ACKNOWLEDGED THAT THEY EXECUTED THE SAME AS THEIR
FREE ACT AND DEED.

NOTARY PUBLIC *Jaynell S. Thomas*, SAGINAW COUNTY
JAYNELL S. THOMAS MICHIGAN

MY COMMISSION EXPIRES: APRIL 19, 1983

COUNTY PLAT BOARD CERTIFICATE

THIS PLAT HAS BEEN REVIEWED AND IS APPROVED BY
THE SAGINAW COUNTY PLAT BOARD ON November 4, 1980
AS BEING IN COMPLIANCE WITH ALL OF THE PROVISIONS
OF ACT 288, P.A. 1967, AND THE PLAT BOARD'S
APPLICABLE RULES AND REGULATIONS

Kathryn J. Gage
KATHRYN J. GAGE, REGISTER OF DEEDS

Gladys June Ormsby
GLADYS JUNE ORMSBY, COUNTY CLERK

Marvin D. Hare
MARVIN D. HARE, COUNTY TREASURER

JAMES LAWRENCE, MEMBER, BOARD OF AUDITORS

Frank R. Chilson, Jr.
FRANK R. CHILSON, JR. MEMBER, BOARD OF AUDITORS

Dorothy M. Kowaleski
DOROTHY M. KOWALESKI, MEMBER, BOARD OF AUDITORS

CERTIFICATE OF MUNICIPAL APPROVAL

I CERTIFY THAT THIS PLAT WAS APPROVED BY THE
TOWNSHIP BOARD OF THE TOWNSHIP OF SAGINAW AT
A MEETING HELD Oct 13, 1980 AND WAS
REVIEWED AND FOUND TO BE IN COMPLIANCE WITH
ACT 288, P.A. 1967, AND THAT PUBLIC WATER
AND PUBLIC SEWER HAVE BEEN INSTALLED AND ARE
READY FOR CONNECTION.

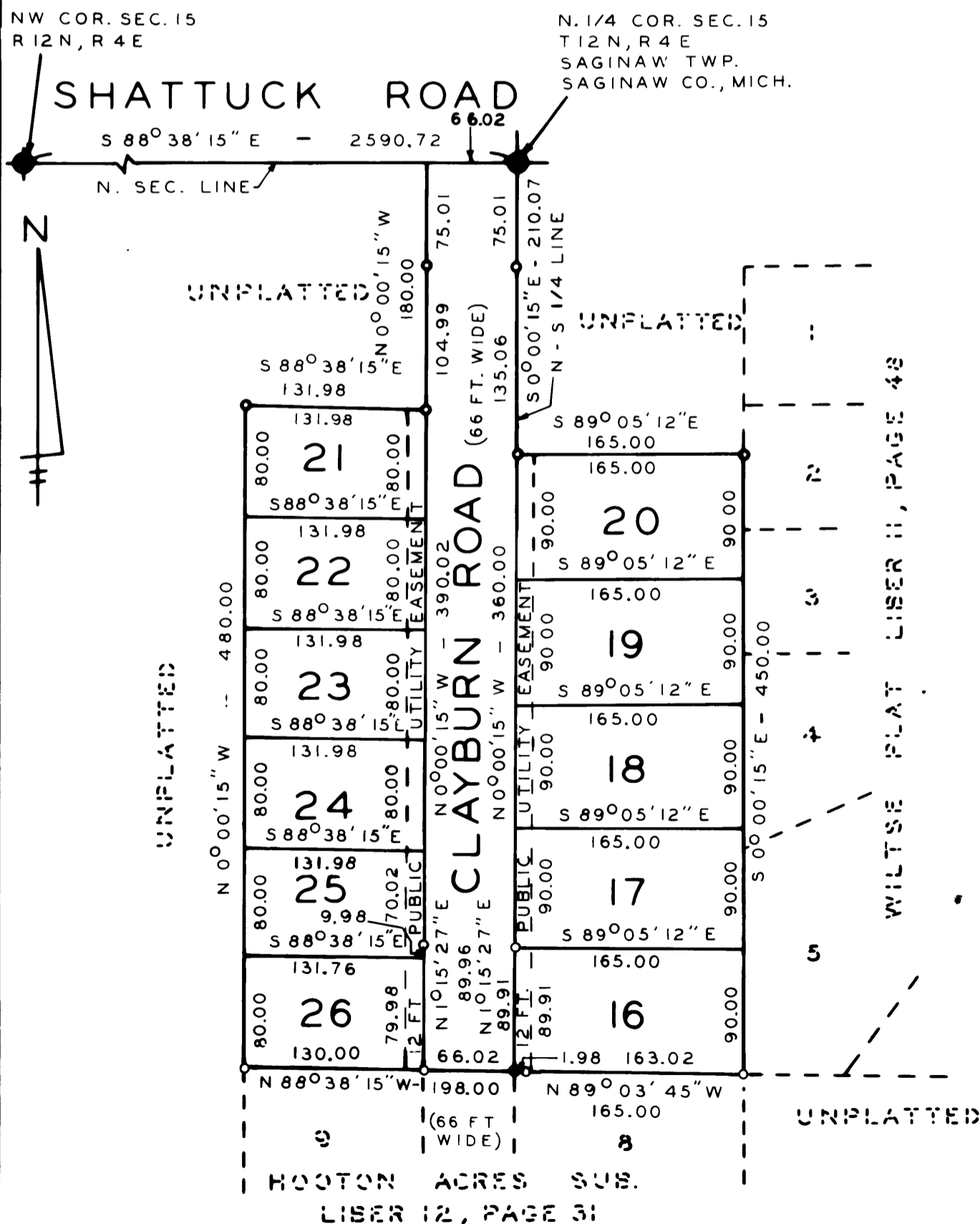
Clemens O. Putz
CLEMENS O. PUTZ, CLERK

COUNTY TREASURER'S CERTIFICATE

THE RECORDS IN MY OFFICE SHOW NO UNPAID
TAXES OR SPECIAL ASSESSMENTS FOR THE
FIVE YEARS PRECEDING July 2, 1980
INVOLVING THE LANDS INCLUDED IN THIS PLAT

Marvin D. Hare
MARVIN D. HARE, COUNTY TREASURER

SAGINAW COUNTY



LEACH ENGINEERING, INC.
3880 GROTTO ROAD
BRIDGEPORT, MICH. 48722