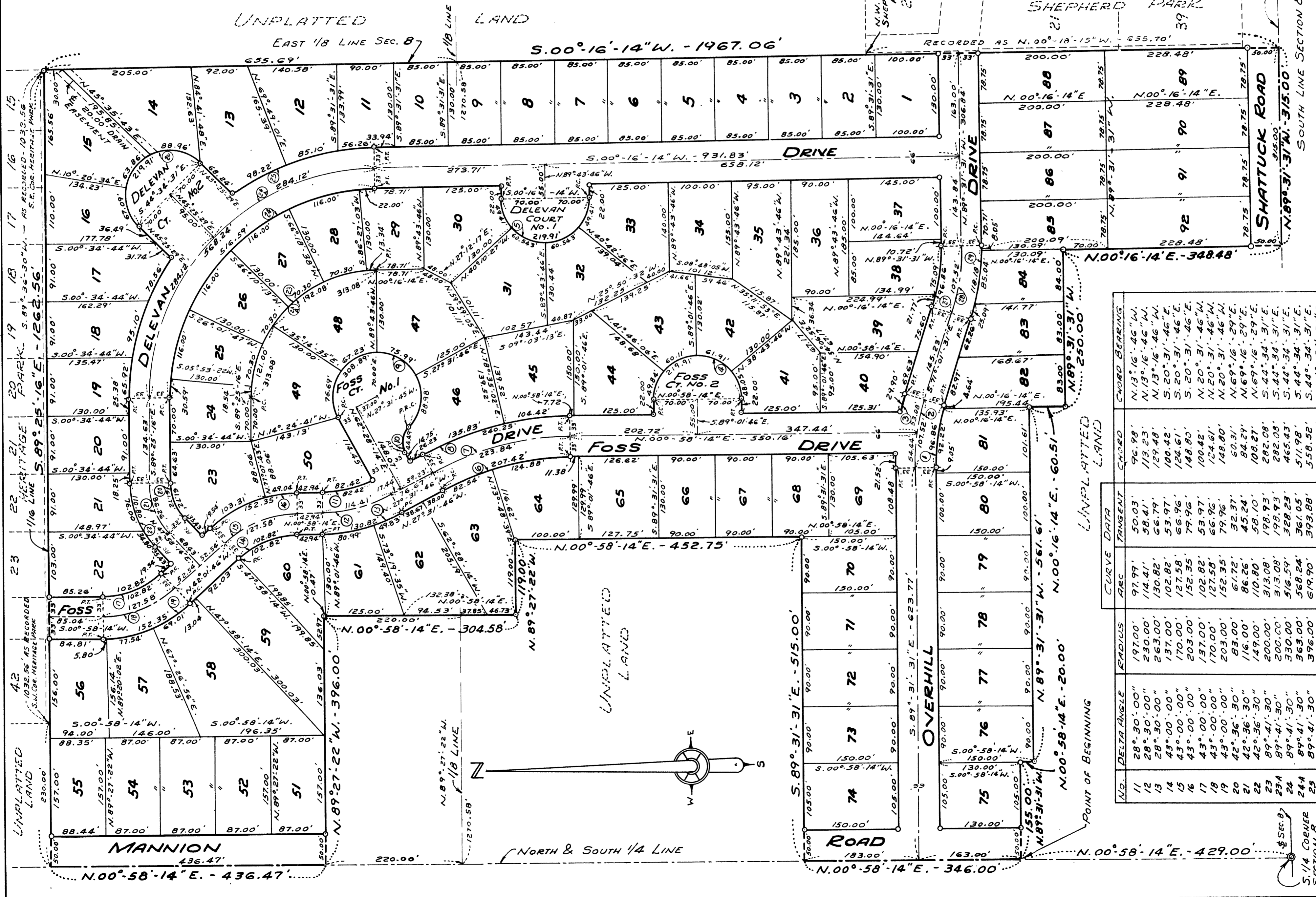


HUNTINGTON WOODS ESTATES

SECTION 8, TOWNSHIP 12 NORTH, RANGE 4 EAST
SAGINAW TOWNSHIP, SAGINAW COUNTY, MICHIGAN

SCALE: 1 INCH = 100 FEET
ALL DIMENSIONS ARE GIVEN IN FEET AND DECIMALS THEREOF
SPICER ENGINEERING COMPANY
SAGINAW, MICHIGAN
1968

CURVE DATA						
NO.	DELTA ANGLE	RADIUS	ARC	TANGENT	CHORD	CHORD BEARING
1	18°-30'-00"	300.00'	96.86'	48.86'	96.45'	S.80°-16'-31" E.
2	18°-30'-00"	333.00'	107.52'	54.23'	107.06'	S.80°-16'-31" E.
3	18°-30'-00"	366.00'	118.18'	59.61'	117.66'	S.80°-16'-31" E.
4	180°-00'-00"	70.00'	219.91'	—	140.00'	S.00°-58'-14" W.
5	180°-00'-00"	70.00'	219.91'	—	140.00'	N.00°-16'-14" E.
6	28°-30'-00"	417.00'	207.42'	103.90'	205.29'	S.13°-16'-46" E.
7	28°-30'-00"	450.00'	223.84'	114.28'	221.54'	S.13°-16'-46" E.
8	28°-30'-00"	483.00'	240.25'	122.67'	237.78'	S.13°-16'-46" E.
9	252°-49'-41"	70.00'	308.89'	—	112.67'	S.08°-53'-05" W.
10	72°-49'-42"	35.00'	44.49'	25.82'	41.55'	S.81°-06'-55" E.



NO.	DELTA ANGLE	RADIUS	ARC	TANGENT	CHORD	CHORD BEARING
11	28°-30'-00"	197.00'	97.99'	50.03'	96.98'	N.13°-16'-46" W.
12	28°-30'-00"	230.00'	114.41'	58.41'	113.23'	N.13°-16'-46" W.
13	28°-30'-00"	263.00'	130.82'	66.79'	129.48'	N.13°-16'-46" W.
14	43°-00'-00"	170.00'	102.82'	53.97'	100.42'	S.20°-31'-46" E.
15	43°-00'-00"	170.00'	102.82'	53.97'	100.42'	S.20°-31'-46" E.
16	43°-00'-00"	203.00'	152.35'	79.96'	148.80'	S.20°-31'-46" E.
17	43°-00'-00"	137.00'	102.82'	53.97'	100.42'	N.20°-31'-46" W.
18	43°-00'-00"	170.00'	102.82'	53.97'	100.42'	N.20°-31'-46" W.
19	43°-00'-00"	203.00'	152.35'	79.96'	148.80'	N.20°-31'-46" W.
20	42°-36'-30"	116.00'	86.26'	45.24'	80.31'	N.69°-16'-29" E.
21	42°-36'-30"	149.00'	110.80'	58.10'	108.27'	N.69°-16'-29" E.
22	89°-41'-30"	200.00'	313.08'	198.93'	282.08'	S.44°-34'-31" E.
23	89°-41'-30"	200.00'	313.08'	198.93'	282.08'	S.44°-34'-31" E.
24	89°-41'-30"	330.00'	516.59'	328.23'	465.43'	S.44°-34'-31" E.
24A	89°-41'-30"	363.00'	568.24'	363.05'	511.98'	S.44°-34'-31" E.
25	89°-41'-30"	396.00'	619.90'	393.88'	558.52'	S.44°-34'-31" E.
26	180°-00'-00"	70.00'	219.91'	—	140.00'	S.44°-34'-31" E.
27	18°-30'-00"	300.00'	96.86'	48.86'	96.45'	N.80°-16'-31" W.
28	18°-30'-00"	333.00'	107.52'	54.23'	107.06'	N.80°-16'-31" W.
29	18°-30'-00"	366.00'	118.18'	59.61'	117.66'	N.80°-16'-31" W.

NOTE: ALL DIMENSIONS ALONG THE CURVES ARE ARC MEASUREMENTS BEING TRUE AS DETERMINED FROM A SOLAR OBSERVATION OF 11-29-67

