

JUL 13 1956

JULIANNE PARK

A PART OF S.E. 1/4 OF N.E. 1/4 - SECTION 16, T.12 N.-R.4 E.

SAGINAW TOWNSHIP - SAGINAW COUNTY - MICHIGAN

CERTIFICATE OF APPROVAL BY CITY PLANNING COMMISSION

This plat was approved by the City Planning Commission of the City of Saginaw, Michigan, at a meeting held the 23rd day of July 1956.

Russel O. Koenig Director

CERTIFICATE OF MUNICIPAL APPROVAL

This plat was approved by the Township Board of the Township of Saginaw at a meeting held the 19th day of July 1956.

Walter Dietzel Clerk

SCALE: 1 INCH = 100 FEET
0 50 100 200 300 400

ALL DIMENSIONS ARE GIVEN IN FEET AND DECIMALS THEREOF
THE SPICER ENGINEERING COMPANY
SAGINAW, MICHIGAN
1956

DEDICATION

KNOW ALL MEN BY THESE PRESENTS, That we, Clarence W. Meyer and Grace M. Meyer, his wife; Harry O. Meyer and Florence M. Meyer, his wife; and Pearl Kennerly by Clarence W. Meyer, her attorney-in-fact, as proprietors, have caused the land embraced in the annexed plat to be surveyed, laid out and platted to be known as JULIANNE PARK, A Part Of S.E. 1/4 Of N.E. 1/4, Section 16, T.12 N.-R.4 E., Saginaw Township, Saginaw County, Michigan, and that the Streets and Drives as shown on said plat are hereby dedicated to the use of the public.

Clarence W. Meyer (L.S.)
Grace M. Meyer (L.S.)
Clarence W. Meyer (L.S.)
Harry O. Meyer (L.S.)
Florence M. Meyer (L.S.)
Pearl Kennerly (L.S.)
By Clarence W. Meyer, Attorney-in-fact (L.S.)

Signed and Sealed in the Presence of

Estelle M. Bryan
C. H. Spicer

ACKNOWLEDGMENT

STATE OF MICHIGAN) ss.
County of Saginaw)

On this 13th day of July 1956, before me, a Notary Public in and for said County appeared the above named Clarence W. Meyer and Grace M. Meyer, his wife; Harry O. Meyer and Florence M. Meyer, his wife; Clarence W. Meyer as attorney-in-fact for Pearl Kennerly, known to me to be the persons who executed the above dedication and acknowledged the same to be their free act and deed.

My Commission Expires May 16, 1958
Estelle M. Bryan
Notary Public, Saginaw County, Michigan

COUNTY TREASURER'S CERTIFICATE RELATING TO TAXES
(Sec. 135, Act 206, 1893 as amended - Sec. 4134, C.L. 1915.)
Office of County Treasurer, Saginaw County

I hereby certify, that there are no tax liens or titles held by the State on the land described hereon, and that there are no tax liens or titles held by individuals on said lands, for the five years preceding the 5th day of July 1956 and that the taxes for said period of five years are paid, as shown by the records of this office.

This certificate does not apply to taxes, if any, now in process of collection by township, city or village collecting officers.

Carl O. Little County Treasurer

CERTIFICATE OF APPROVAL BY BOARD OF COUNTY ROAD COMMISSIONERS

This plat has been examined and was approved on the 19th day of July 1956 by the Saginaw County Board of Road Commissioners.

The Board of County Road Commissioners of Saginaw County, Michigan, assume no responsibility for the improvement or maintenance of the Roads or Streets shown on this Plat until such time as the following conditions have been met and approved by this Board.

All Roads and Streets are to be graded and drained with necessary drainage structures installed and a roadway surface, which shall consist of crushed stone or natural gravel conforming to Michigan State Highway Department Specifications 21A. The surface shall have a minimum width of 18 feet and a compacted thickness of 6 inches. When crushed stone is used the top 2 inches shall be 21A with screenings added to provide a dense wearing course.

Albert M. Wills Chairman
William M. Trim Member
Frank Dudewicz Member

DESCRIPTION

The land embraced in the annexed plat of JULIANNE PARK, A Part Of S.E. 1/4 Of N.E. 1/4, Section 16, T.12 N.-R.4 E., Saginaw Township, Saginaw County, Michigan, is described as follows: Commencing at a point on the East and West 1/4 line of said Section 16, 1316.13 feet Due East along said line from the center of said Section; thence N.01°-24'-15"W., on the East line of Wilson and Wilson First Addition, 1313.23 feet to the North 1/8th line of Section 16; thence N.89°-54'-30"E., on said eighth line 261.60 feet; thence S.01°-26'-30"E., 1313.65 feet to the East and West 1/4 line of Section 16; thence Due West on said quarter line 262.44 feet to the point of beginning. This plat contains 23 lots numbered consecutively from 1 to 23 inclusive.

SURVEYOR'S CERTIFICATE

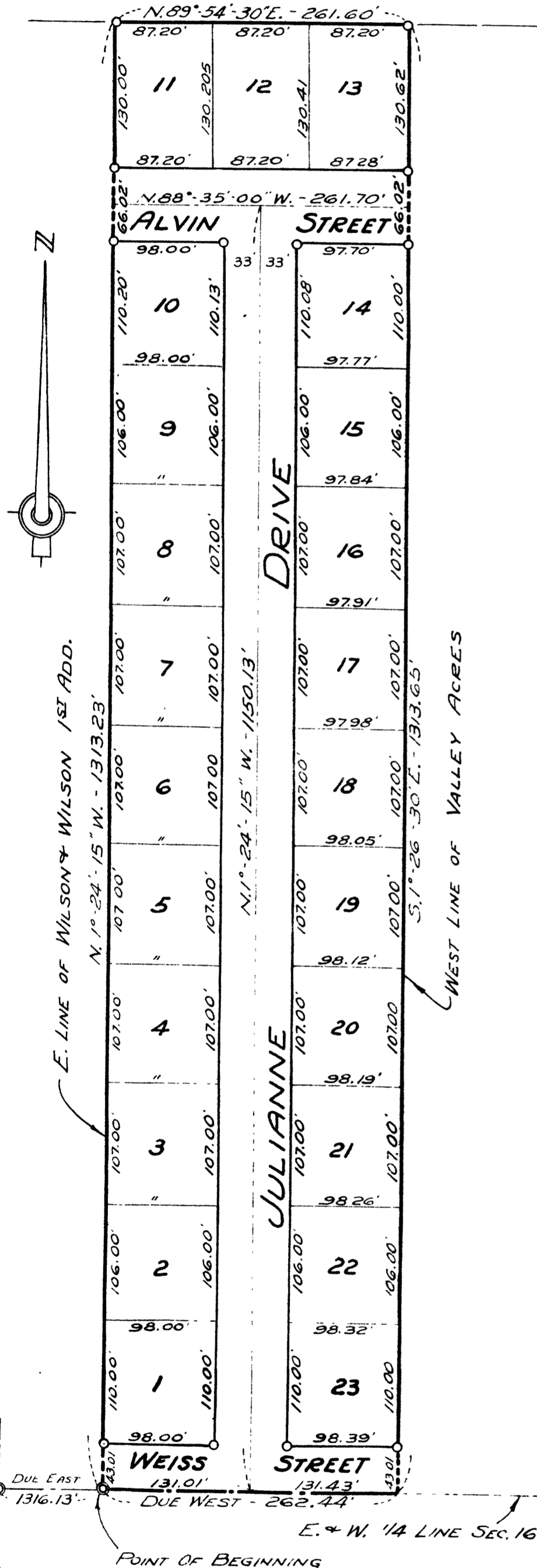
I hereby certify that the plat hereon delineated is a correct one and that permanent metal monuments consisting of bars not less than one-half inch in diameter and 36 inches in length, or shorter bars of not less than one-half inch in diameter lapped over each other at least 6 inches with an over-all length of not less than 36 inches, encased in a concrete cylinder at least 4 inches in diameter and 36 inches in depth have been placed at points marked thus o as thereon shown at all angles in the boundaries of the plat, at all intersections of streets, and at the intersections of streets with the boundaries of the plat as shown on said plat.

Clifford H. Spicer Registered Land Surveyor

CERTIFICATE OF APPROVAL BY THE COUNTY PLAT BOARD

This plat was approved by the County Plat Board of Saginaw County, Michigan, this 14th day of July 1956.

Clara E. Turck Register of Deeds-Chairman
Peter Girard Auditor
George Cavanaugh Auditor
William A. Case Auditor



COPY
Register's Office
Saginaw County
Date July 13, 1956
Original on file

CENTER OF SECTION 16
T.12 N. - R.4 E.
SAGINAW, TOWNSHIP

CERTIFICATE OF APPROVAL BY THE COUNTY PLAT BOARD