

KERWOOD SUBDIVISION

PART OF THE WEST HALF OF SECTION 20, T.12 N. - R.4 E.
SAGINAW TOWNSHIP, SAGINAW COUNTY, MICHIGAN

E 1/4 COR. SEC 20
T. 12 N. - R. 4 E.
SAGINAW TOWNSHIP
SAGINAW Co., MICHIGAN

POINT OF BEGINNING
S. 00°-03'-23" W. - 1344.95'

CTR. SEC. 20, T. 12 N. - R. 4 E.
SAGINAW TOWNSHIP
SAGINAW Co., MICHIGAN

SEE SHEET No. 1

EAST & WEST 1/4 LINE
MATCH LINE

DATONA ROAD

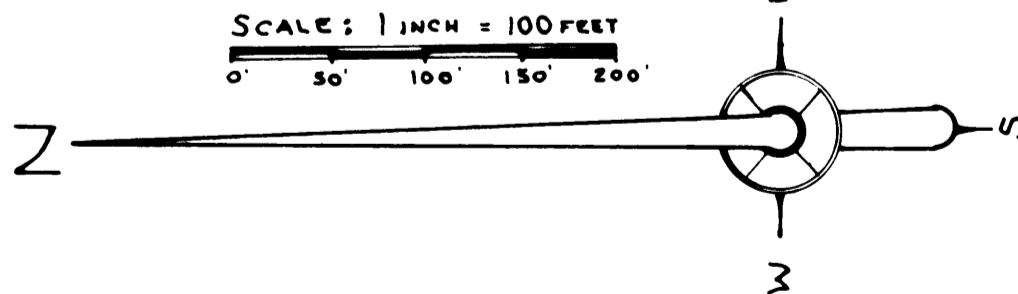
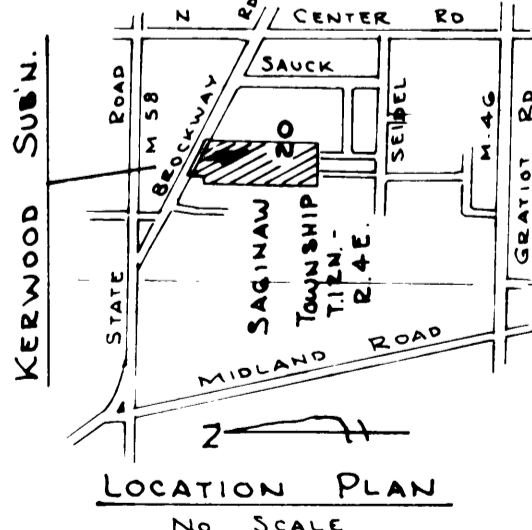
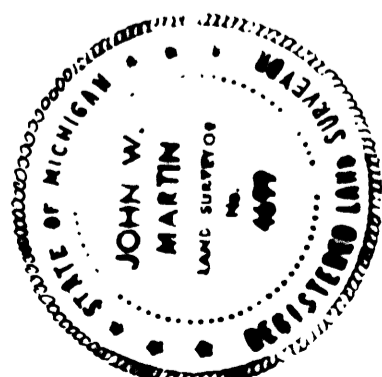
WILLOWBROOK DRIVE

ALLENDALE DRIVE

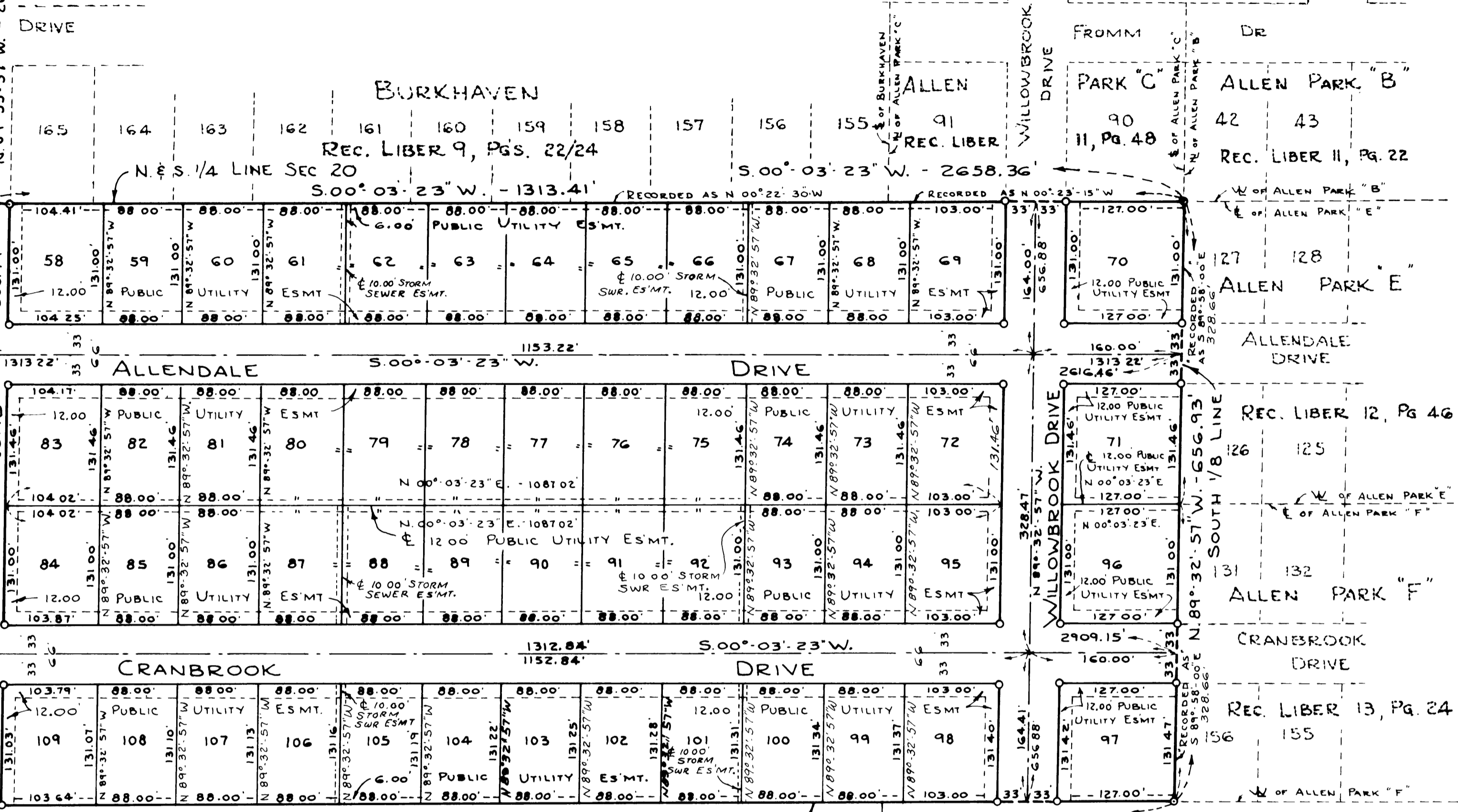
CRANBROOK DRIVE

SOUTH 1/8 LINE

ARROWWOOD II
SUBDIVISION
BRIARSON DRIVE
REC. LIBER II
PAGE 5



NOTE:
1- ALL DIMENSIONS ARE GIVEN IN FEET
2- CONCRETE MONUMENTS HAVE BEEN PLACED AT ALL POINTS MARKED "O"
3- SET SOLID IRON BARS 1/2" IN DIA BY 18" IN LENGTH AT ALL LOT CORNERS
4- BEARINGS ARE TRUE AS DETERMINED FROM AN OBSERVATION OF POLARIS ON 7-2-1970



BURKHAVEN
REC. LIBER 9, PGS. 22/24

ALLEN
REC. LIBER 11, PG. 22

PARK C
11, PG. 48

ALLEN PARK "B"
42 43
REC. LIBER 11, PG. 22

ALLEN PARK "E"
127 128

ALLENDALE DRIVE

REC. LIBER 12, PG. 46

ALLEN PARK "F"
131 132

CRANBROOK DRIVE

REC. LIBER 13, PG. 24

UNPLATTED LAND
ARROWOOD SCHOOL

UNPLATTED LAND