

# KUHLMAN SUBDIVISION

A PART OF S.E. 1/4 OF N.E. 1/4 - SECTION 16, T.12 N.-R.4 E.

SAGINAW TOWNSHIP - SAGINAW COUNTY - MICHIGAN

SCALE: 1 INCH = 100 FEET  
 0 50 100 200 300 400  
 ALL DIMENSIONS ARE GIVEN IN FEET AND DECIMALS THEREOF  
 THE SPICER ENGINEERING COMPANY  
 SAGINAW, MICHIGAN  
 1955

CERTIFICATE OF APPROVAL BY THE COUNTY PLAT BOARD

This plat was approved by the County Plat Board of Saginaw County, Michigan this 27th day of May 1955.

Clara P. Turek  
 Clara P. Turek, Register of Deeds-Chairman  
Peter Girard Auditor  
George Cavanaugh Auditor  
William A. Case Auditor

Register's Office  
 County, ss.  
 Date Examined and approved  
 Date  
 By Clara P. Turek Register of Deeds  
Walter Dietzel Plat Engineer

Plat of  
 was recorded this \_\_\_\_\_ day of \_\_\_\_\_ A.D. 1955 at 9:20 o'clock  
 A. M. in Liber. \_\_\_\_\_  
 in Page \_\_\_\_\_  
 ORIGINAL ON FILE

DEDICATION

KNOW ALL MEN BY THESE PRESENTS, That We, Harvey Kuhlman and Clara J. Kuhlman, his wife; William J. Hutchison and Erna L. Hutchison, his wife; and James A. Hutchison, a single man, have caused the land embraced in the annexed plat to be surveyed, laid out and platted to be known as KUHLMAN SUBDIVISION, A Part Of S.E. 1/4 Of N.E. 1/4, Section 16, T.12 N.-R.4 E., Saginaw Township, Saginaw County, Michigan, and that the streets and drive as shown on said plat are hereby dedicated to the use of the public, Excepting however, from this dedication land designated "Two Foot Reservation," such land to be dedicated automatically for street purposes at such time as street extensions adjacent thereto are dedicated in adjoining property.

Harvey Kuhlman (L.S.)  
Clara J. Kuhlman (L.S.)  
William J. Hutchison (L.S.)  
Erna L. Hutchison (L.S.)  
James A. Hutchison (L.S.)

Signed and Sealed in the Presence of

Elmer Spaeder  
Clifford H. Spicer

ACKNOWLEDGMENT

STATE OF MICHIGAN) ss.  
 County of Saginaw)

On this \_\_\_\_\_ day of \_\_\_\_\_ 1955, before me, a Notary Public, in and for said County, personally came the above named Harvey Kuhlman and Clara J. Kuhlman, his wife; William J. Hutchison and Erna L. Hutchison, his wife; and James A. Hutchison, a single man, known to me to be the persons who executed the above dedication and acknowledged the same to be their free act and deed.

My Commission Expires May 16, 1958  
Estelle M. Bryan  
 Notary Public, Saginaw County, Michigan

DESCRIPTION

The land embraced in the annexed plat of KUHLMAN SUBDIVISION, A Part Of S.E. 1/4 Of N.E. 1/4, Section 16, T.12 N.-R.4 E., Saginaw Township, Saginaw County, Michigan, is described as follows: Commencing at a point on the East and West 1/4 line of said Section 16, 262.43 feet N.88°-28'-00"W., along said line from the East 1/4 post of said Section; thence continuing N.88°-28'-00"W., 262.43 feet; thence N.00°-02'-00"E., 1314.15 feet to the North 1/8th line of said Section 16; thence S.88°-32'-30"E., on said 1/8th line 261.67 feet; thence Due South 1314.51 feet to the point of beginning.

SURVEYOR'S CERTIFICATE

I hereby certify that the plat hereon delineated is a correct one and that permanent metal monuments consisting of bars not less than one-half inch in diameter and 36 inches in length, or shorter bars of not less than one-half inch in diameter lapped over each other at least 6 inches with an over-all length of not less than 36 inches, encased in a concrete cylinder at least 4 inches in diameter and 36 inches in depth have been placed at points marked thus o as thereon shown at all angles in the boundaries of the land platted, at all intersections of streets, and at the intersections of streets with the boundaries of the plat as shown on said plat.

Clifford H. Spicer  
 Clifford H. Spicer-Registered Land Surveyor

CERTIFICATE OF APPROVAL BY BOARD OF COUNTY ROAD COMMISSIONERS

This plat has been examined and was approved on the 7th day of April 1955 by the Saginaw County Board of Road Commissioners.

The Board of Road Commissioners of Saginaw County, Michigan, assumes no responsibility for the improvement or maintenance of the streets and roads shown on this plat until such time as they have been graded and drained with the necessary drainage structures installed and a gravel, slag, or cinder surface having a compacted thickness of at least 6 inches and a width of at least 18 feet has been applied and approved by this board.

Albert M. Wille Chairman  
William M. Irim Member  
Frank Dudewicz Member

CERTIFICATE OF MUNICIPAL APPROVAL

This plat was approved by the Township Board of the Township of Saginaw at a meeting held 1st day of April 1955.

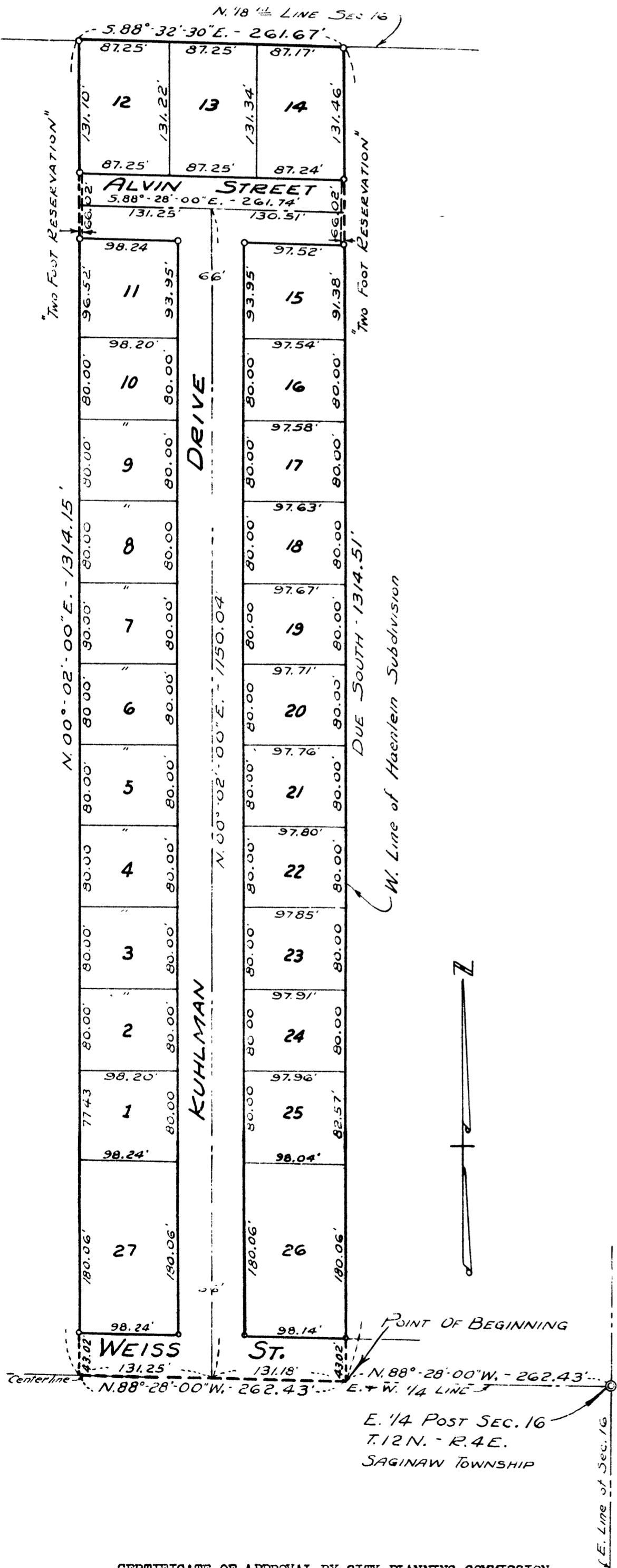
Walter Dietzel Clerk

COUNTY TREASURER'S CERTIFICATE RELATING TO TAXES  
 (Sec. 135, Act 206, 1893 as amended - Sec. 4134, C.L. 1915.)  
 Office of County Treasurer, Saginaw County

I hereby certify, that there are no tax liens or titles held by the State on the land described hereon, and that there are no tax liens or titles held by individuals on said lands, for the five years preceding the 5th day of May 1955, and that the taxes for said period of five years are all paid, as shown by the records of this office.

This certificate does not apply to taxes, if any, now in process of collection by township, city or village collecting officers.

Carl O. Little  
 County Treasurer



CERTIFICATE OF APPROVAL BY CITY PLANNING COMMISSION

This plat was approved by the City Planning Commission of the City of Saginaw, Michigan, at a meeting held on the 15th day of March 1955.

Russel O. Koehn  
 Director