

LATHRUP PARK SUBDIVISION NUMBER TWO

SECTION TWENTY-ONE - TOWNSHIP TWELVE NORTH - RANGE FOUR EAST

SAGINAW TOWNSHIP - SAGINAW COUNTY - MICHIGAN

SCALE - 1 INCH = 200 FEET



All dimensions are given in feet and decimals thereof. Standard temperature 68°

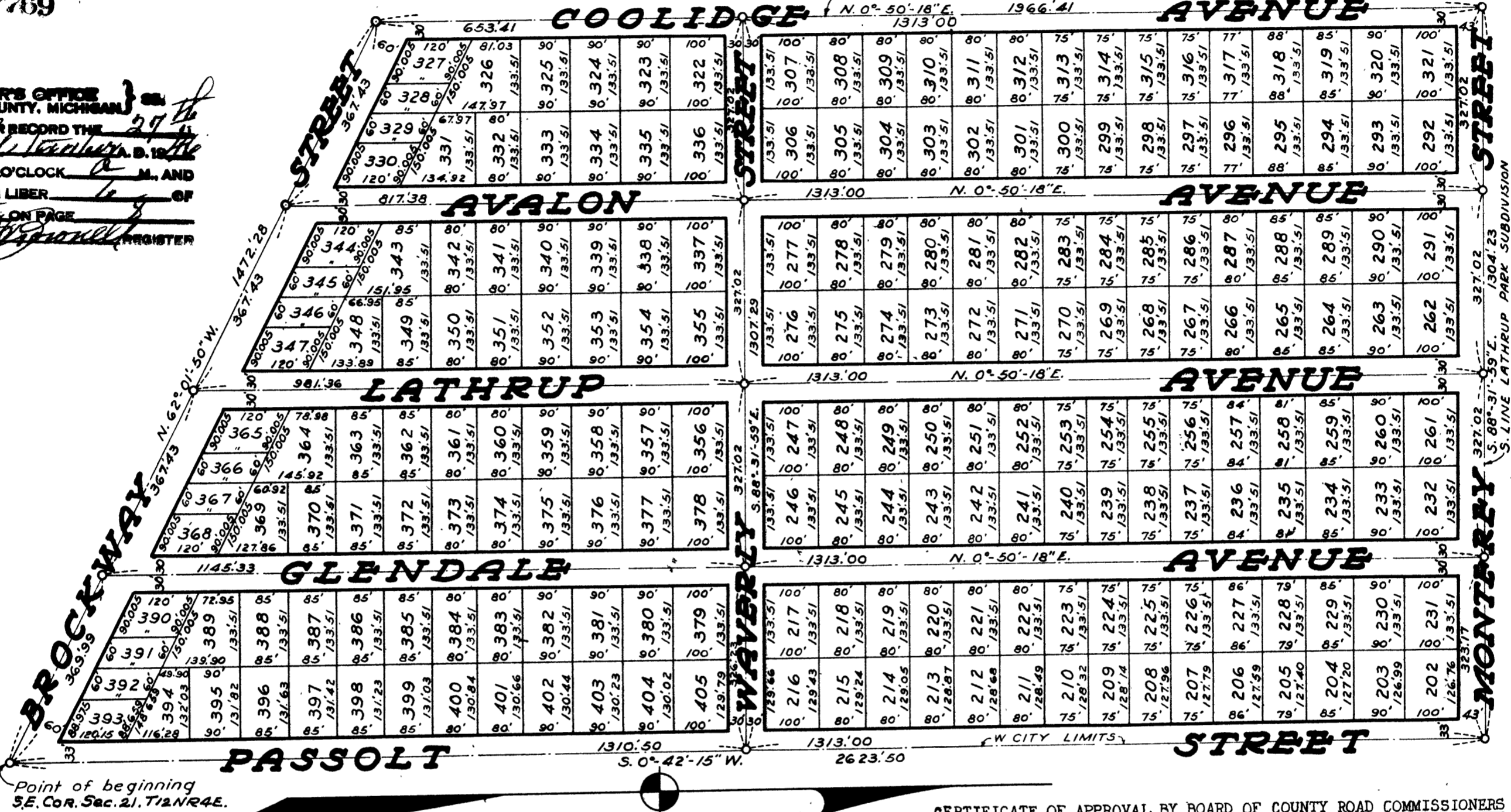
THE FRANCIS ENGINEERING COMPANY — SAGINAW, MICHIGAN

7769

E LINE - "HOMWOOD" PLAT

N. 0°-50'-18" E. 1966.41

REGISTRAR'S OFFICE
SAGINAW COUNTY, MICHIGAN
RECEIVED FOR RECORD THE
DAY OF Sept. 27th
AT 10:30 O'CLOCK A.M. AND
RECORDED IN LIBER 6 OF
State of Michigan REGISTER



Point of beginning
S.E. Cor. Sec. 21, T. 12 N. R. 4 E.

CERTIFICATE OF APPROVAL BY BOARD OF COUNTY ROAD COMMISSIONERS

This plat has been examined and was approved on the 10th day of September, 1946 by the Saginaw County Board of Road Commissioners but in so doing said Board does not accept any responsibility for the construction, maintenance, or drainage of the roads shown within the confines of the plat.

Arthur Reinhold - Chairman
Fred Galsterer - Member
William Sommerfield - Member

CERTIFICATE AS TO STATE TRUNK LINE OR FEDERAL AID ROADS

We hereby certify that said plat does not include land located on a state trunk line or federal aid road.

George Cavanaugh - George Cavanaugh
Fred G. Swartzmiller - Fred G. Swartzmiller
Albert Kipp - Albert Kipp
County Plat Board.

CERTIFICATE OF APPROVAL BY THE BOARD OF COUNTY AUDITORS

Approved by the Board of County Auditors of Saginaw County, Michigan, this 11th day of September, 1946.

George Cavanaugh - Chairman
Fred G. Swartzmiller - Member
Albert Kipp - Member

COUNTY TREASURER'S CERTIFICATE RELATING TO TAXES

(Sec. 135, Act 206, 1893, as amended - Sec. 4134, C.L. 1915)
Office of County Treasurer, Saginaw County.
I hereby certify, that there are no tax liens or titles held by the State on the lands described hereon, and that there are no tax liens or titles held by individuals on said lands, for the five years preceding the 7th day of September, 1946, and that the taxes for said period of five years are all paid, as shown by the records of this office.
This certificate does not apply to taxes, if any, now in process of collection by township, city or village collecting officers.

Carl C. Little - County Treasurer.

DESCRIPTION

The land embraced in the annexed plat of "LATHRUP PARK SUBDIVISION NUMBER TWO, SECTION TWENTY-ONE, TOWNSHIP TWELVE NORTH - RANGE FOUR EAST, SAGINAW TOWNSHIP, SAGINAW COUNTY, MICHIGAN" is described as follows:- Commencing at the Southeast corner of Section Twenty-One (21), Township Twelve (12) North - Range Four (4) East, which point is also the point of intersection of the present West city limits of the City of Saginaw, Michigan, with the centerline of Brockway Street in said City; thence from said point of beginning N. 62°-01'-50" W. along the centerline of what is now known as Brockway Street One Thousand Four Hundred Seventy Two and Twenty-Eight Hundredths (1472.28') feet to the Southeast corner of "Homewood" plat; thence N. 0°-50'-18" E. along the East line of said plat One Thousand Nine Hundred Sixty Six and Forty One Hundredths (1966.41) feet to the Southwest corner of "Lathrup Park Subdivision, Saginaw Township, Saginaw County, Michigan"; thence S. 88°-31'-59" E. along the South line of said last mentioned plat One Thousand Three Hundred Four and Twenty Three Hundredths (1304.23') feet to the Southeast corner of same and a point which is also on the West city limits of the City of Saginaw and also on the East line of said Section 21; thence S. 0°-42'-15" W. along the East line of said Section and the West line of the corporate limits of the City of Saginaw Two Thousand Six Hundred Twenty Three and Fifty Hundredths (2623.50') feet to the point of beginning.

Examined and Approved

September 26, 1946
Mayme Jewell Parry Deputy Auditor General

DEDICATION

KNOW ALL MEN BY THESE PRESENTS, That I, Douglas Lathrup, trustee as proprietor, have caused the land embraced in the annexed plat to be surveyed, laid out and platted, to be known as LATHRUP PARK SUBDIVISION NUMBER TWO, SECTION TWENTY-ONE, TOWNSHIP TWELVE NORTH - RANGE FOUR EAST, SAGINAW TOWNSHIP, SAGINAW COUNTY, MICHIGAN, and that the streets as shown on said plat are hereby dedicated to the use of the public.

Signed and Sealed in Presence of
G. W. Francis) Douglas Lathrup Douglas Lathrup - Trustee.
N. A. Rosenberg)
STATE OF MICHIGAN ss
County of Saginaw

On this 6th day of September A. D. 1946, before me, Alice S. Vigen a Notary Public in and for said county, appeared Douglas Lathrup to me personally known, who being by me duly sworn did say that he is the Trustee for the proprietors of the land embraced in the annexed plat by virtue of a Trust Instrument recorded on the 4th day of April A.D. 1940, in Liber 604, pages 492 to 497 inclusive, and a deed recorded on the 23rd day of May A. D. 1940, in Liber 607, pages 102 to 104 inclusive, respectively, Register of Deeds Office, Saginaw County, Saginaw, Michigan, granting full power and authority to cause said property to be platted and that said instrument was signed in behalf of said proprietors and the said Douglas Lathrup acknowledged said instrument to be his free act and deed as such Trustee.
Alice S. Vigen Alice S. Vigen
Notary Public Saginaw County, Michigan.
My Commission expires July 12, 1949.

SURVEYOR'S CERTIFICATE

I hereby certify that the plat hereon delineated is a correct one and that permanent metal monuments consisting of bars not less than one-half inch in diameter and 48 inches in length, or shorter bars of not less than one-half inch in diameter, placed at intervals of not less than 4 inches with an iron nail or a concrete cylinder at least 4 inches in diameter and 48 inches in depth have been placed at points marked thus o as thereon shown at all angles in the boundaries of the land platted, at all the intersections of streets, and at the intersections of streets with the boundaries of the plat as shown on said plat.
G. W. Francis G. W. Francis
Registered Professional Engineer And Registered Land Surveyor.

CERTIFICATE OF MUNICIPAL APPROVAL (TOWNSHIP)

This plat was approved by the Township Board of the Township of Saginaw at a meeting held July 22, 1946.
Meldron W. McLean Meldron W. McLean - Clerk.

CERTIFICATE OF MUNICIPAL APPROVAL (CITY OF SAGINAW PLANNING COMMISSION)

This plat was approved by the City Planning Commission of the City of Saginaw at a meeting held July 23, 1946.
O. Koenig O. Koenig - Secretary.

CERTIFICATE OF MUNICIPAL APPROVAL (CITY OF SAGINAW)

This plat was approved by the Common Council of the City of Saginaw at a meeting held August 19, 1946.
Frank Niederstadt Frank Niederstadt - Clerk.

Page 8

See Page 6