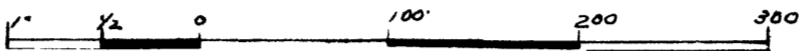


Copy

# "LEONINE COURT NO. 2"

BEING PART OF THE W 1/2 OF THE NE 1/4 OF SECTION 33, T 12 N R 4 E.  
SAGINAW TOWNSHIP,  
SAGINAW COUNTY, MICH.

SCALE 1 INCH 200 FEET.



All dimensions are given in feet and decimals thereof.

### DESCRIPTION OF LAND PLATTED

The land embraced in the annexed plat of "Leonine Court No. 2" being part of the W 1/2 of the NE 1/4 of section 33, T. 12 N. R. 4 E., Saginaw Township, Mich. is described as follows; beginning at the center post of section 33, T. 12 N. R. 4 E., and running thence N. 1° 56' E., 2249.0'; thence S. 88° 46' E., 1312.4' to the E 1/8 line of said section 33; thence S. 1° 53' W on said 1/8 line 2249.6' to the E. and W 1/4 line of section 33; thence N. 88° 45' W on said 1/4 line 1314.2' to the place of beginning.

### SURVEYOR'S CERTIFICATE

I hereby certify that the plat hereon delineated is a correct one and that permanent metal monuments consisting of 3/4 inch pipe 48" in length set in concrete 4 inches in diameter and 48" long have been placed at points marked o as thereon shown at all angles in the boundaries of land platted, at the intersections of streets, and streets with boundaries of land platted.

David A. Nicol David A. Nicol  
Registered Surveyor.

### COUNTY TREASURER'S CERTIFICATE

Office of the County Treasurer, Saginaw County, Michigan. I hereby certify that there are no tax liens or titles held by the State on lands described hereon, and that there are no tax liens or titles held by individuals on said lands for five years preceding the 10th day of October 1941 and that the taxes for said period of five years are paid as shown by the records of this office. This certificate does not apply to taxes, if any, now in the process of collection by Township or Village or City collecting officers.

G. D. Little  
County Treasurer, Saginaw County,  
Michigan.

### DEDICATION

Know all Men by these Presents, That I Neil O'Connor as trustee, have caused the land embraced in the annexed plat to be surveyed, laid out and platted to be known as "Leonine Court No. 2" being part of the W 1/2 of the NE 1/4 of section 33, T. 12 N. R. 4 E., Saginaw Township, Michigan; and that the streets as shown on said plat are hereby dedicated to the use of the public.

Neil O'Connor WITNESS Neil O'Connor L.S.  
Glenn Wm. Cronkite Neil O'Connor

State of Michigan ss.  
County of Saginaw

On the 2nd day of October 1941, before me a Notary Public in and for said County, personally came the above named Neil O'Connor, known to me to be the person who executed the above dedication, and acknowledged the same to be his free act and deed.

A. F. Brogger A. F. Brogger  
Notary Public, Saginaw County, Michigan.

My Commission expires July 22, 1945

### CERTIFICATE OF APPROVAL BY THE TOWNSHIP BOARD

This plat was approved by the Township Board of Saginaw Township, Saginaw County, Michigan on the 25 day of August 1941.

George Emrick Supervisor  
Meldron W. McLean Clerk

### APPROVAL BY THE BOARD OF COUNTY ROAD COMMISSIONERS

This plat was approved by the Board of County Road Commissioners of the County of Saginaw, Michigan on the 14th day of October 1941.

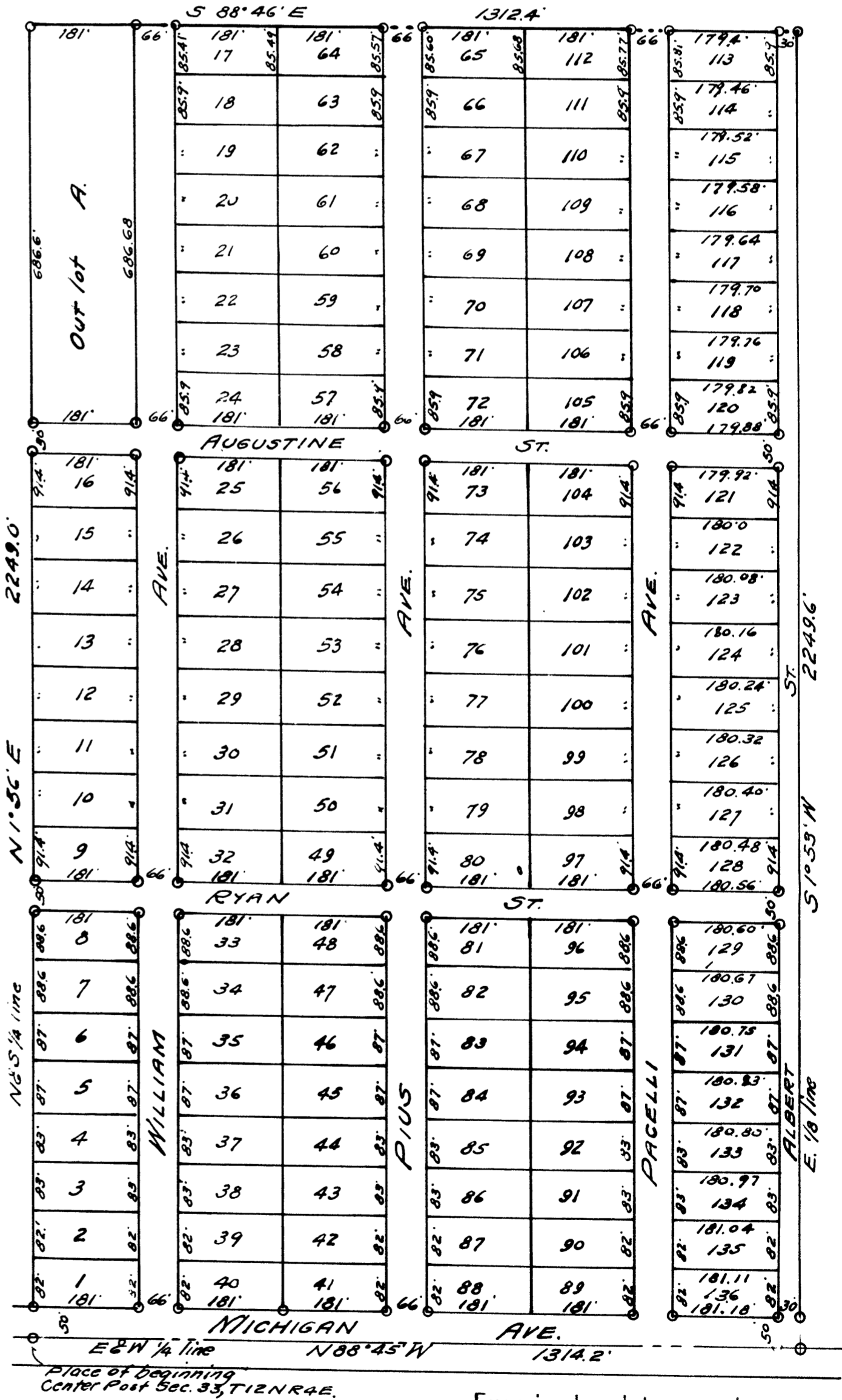
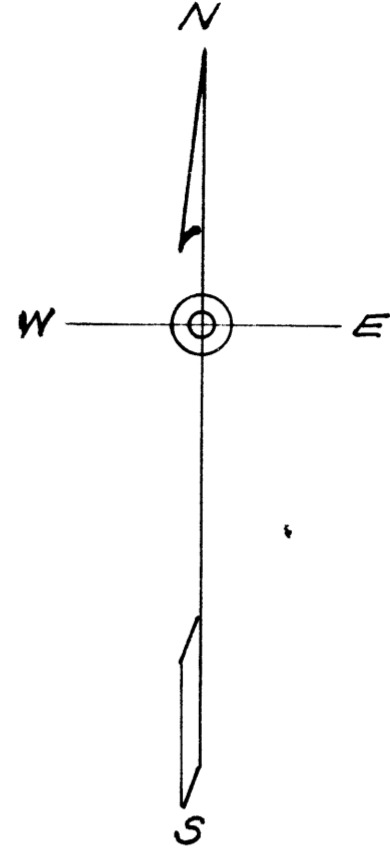
Charles Gottschalk Chairman  
Arthur Reinbold  
GE. Ward

### APPROVAL BY THE BOARD OF COUNTY AUDITORS

This plat was approved by the County Board of Auditors of Saginaw Co. Michigan at a meeting held on the 15th day of Oct. 1941.

George Covanough Chairman  
Albert Kipp  
Fred Zwerk

COPY  
Register's Office  
Saginaw County, ss.  
Plat of Leonine Court No. 2  
was Recorded this 15th day of October  
A.D. 1941 at 10 o'clock  
4 P.M. in Liber 100 of 100  
on Page 100  
ORIGINAL ON FILE



I HEREBY CERTIFY THAT THIS COPY IS A TRUE COPY OF THE MAP OR PLAT FORWARDED TO THE REGISTER OF DEEDS FOR RECORDING.

COMPARED Oct 16, 1941  
Mayme Jewell Purdy  
Mayme Jewell Purdy DEPUTY AUDITOR GENERAL

Examined and Approved

Mayme Jewell Purdy  
Mayme Jewell Purdy DEPUTY AUDITOR GENERAL

FILED IN AUDITOR GENERAL'S DEPT.

Mayme Jewell Purdy  
Mayme Jewell Purdy DEPUTY AUDITOR GENERAL