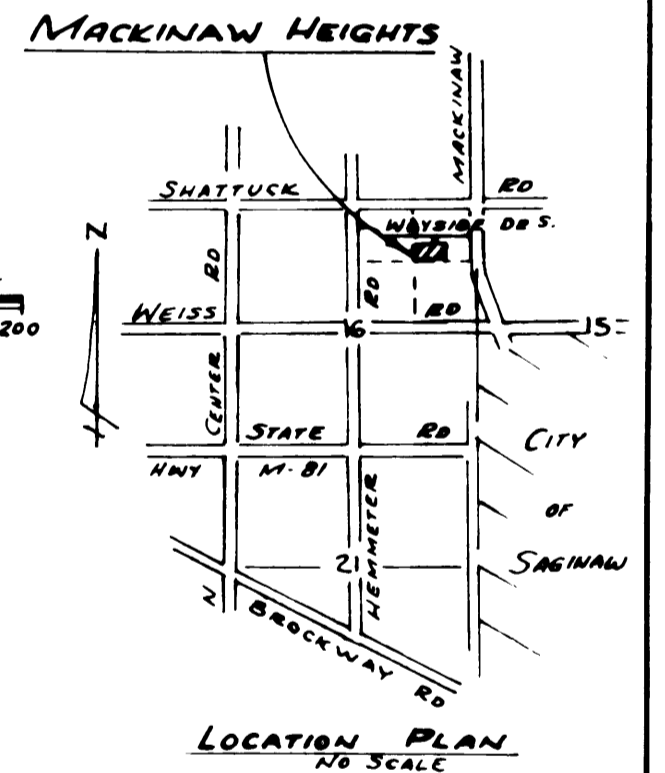
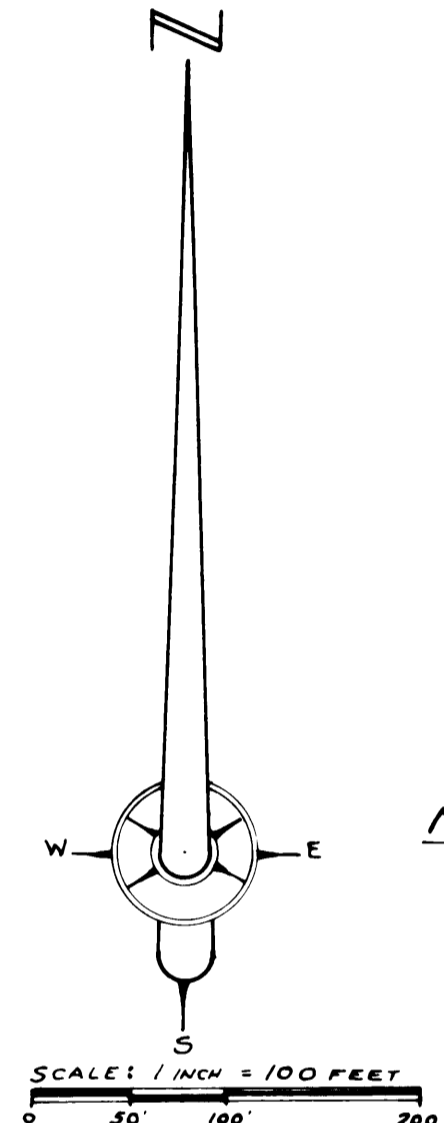
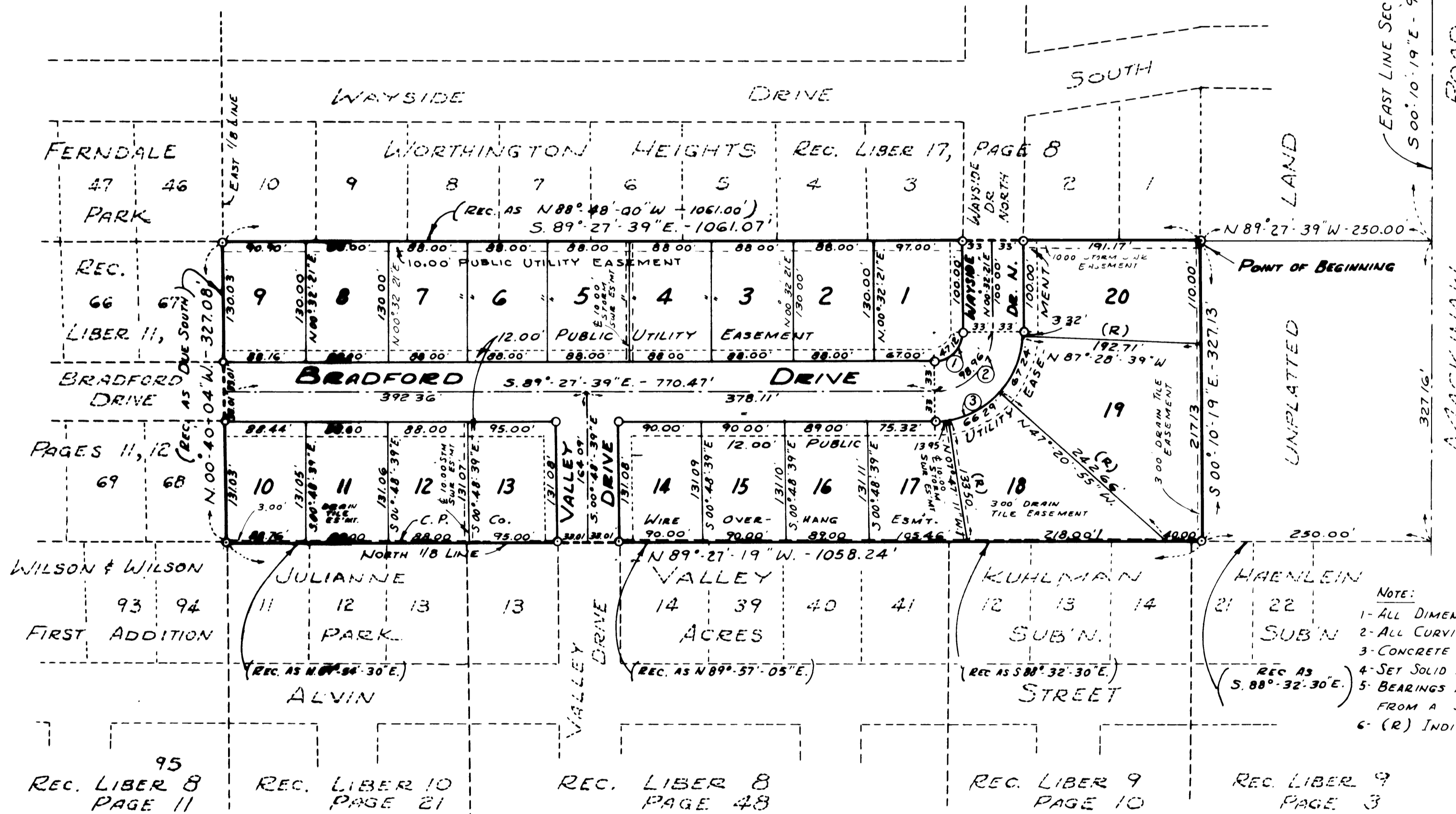


MACKINAW HEIGHTS

PART OF THE NORTHEAST 1/4 OF SECTION 16 T.12 N.-R.4 E.
 SAGINAW TOWNSHIP, SAGINAW COUNTY, MICHIGAN.

CURVE DATA						
No	DELTA ANGLE	RADIUS	ARC	TANGENT	CHORD	CHORD BEARING
1	90°-00'-00"	30.00'	47.12'	30.00'	42.43'	N 45°-32'-21"E.
2	90°-00'-00"	63.00'	98.96'	63.00'	89.10'	N 45°-32'-21"E.
3	90°-00'-00"	96.00'	150.80'	96.00'	135.77'	N 45°-32'-21"E.

SHATTUCK ROAD
 (NORTH LINE SEC 16)
 NE COR. SEC 16
 T 12 N - R 4 E.
 SAGINAW TOWNSHIP
 SAGINAW Co., MICH.



- NOTE:
- 1- ALL DIMENSIONS ARE GIVEN IN FEET
 - 2- ALL CURVILINEAR MEASUREMENTS ARE ARC DISTANCES
 - 3- CONCRETE MONUMENTS HAVE BEEN PLACED AT ALL POINTS MARKED "O"
 - 4- SET SOLID IRON BARS 1/2" DIA BY 18" IN LENGTH AT ALL LOT CORNERS
 - 5- BEARINGS ARE EXPRESSED TO THE TRUE MERIDIAN, AS DETERMINED FROM A SOLAR OBSERVATION OF MAY 15, 1968
 - 6- (R) INDICATES A RADIAL LINE

Certified true copy of recorded plat

Allison Green
 STATE TREASURER
 By: Richard E. Lomax
 Richard E. Lomax - Plat Examiner
 Date: August 20, 1978