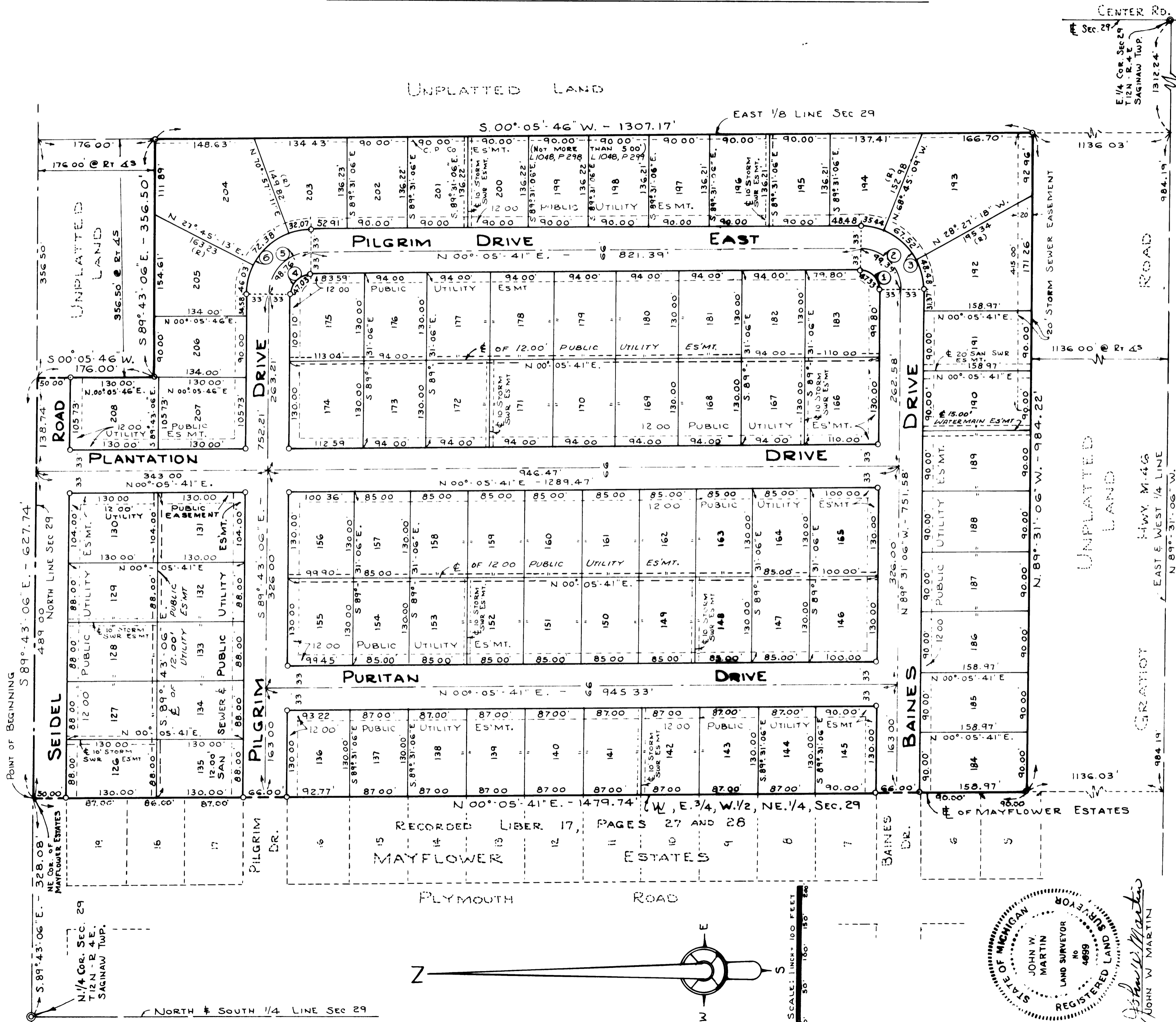


MAYFLOWER ESTATES NUMBER THREE

PART OF THE NORTHEAST 1/4, SECTION 29, T.12N.-R.4E.

SAGINAW TOWNSHIP, SAGINAW COUNTY, MICHIGAN



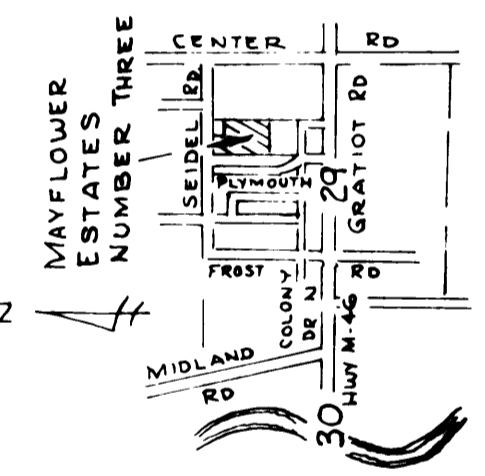
CERTIFIED TRUE COPY OF RECORDED PLAT

Loren E. Monroe

LOREN E. MONROE
STATE TREASURER

Richard E. Tomasz
Richard E. Tomasz, Plat Examiner

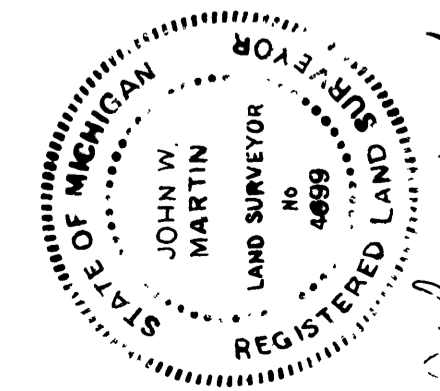
Date May 1, 1960



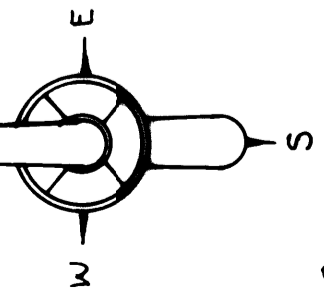
LOCATION PLAN
NO SCALE

CURVE DATA						
No	DELTA ANGLE	RADIUS	ARC	CHORD	CHD BEARING	TANGENT
1	90° 23' 13"	30.00'	47.33'	42.57'	N 45° 17' 18" E.	30.20'
2	"	63.00'	99.39'	89.40'	"	63.43'
3	"	96.00'	151.44'	136.22'	"	96.65'
4	89° 48' 47"	30.00'	47.03'	42.36'	N 44° 48' 43" W	29.90'
5	"	63.00'	98.76'	88.95'	"	62.79'
6	"	96.00'	150.48'	135.54'	"	95.69'

NOTE:
 1- ALL DIMENSIONS ARE GIVEN IN FEET
 2- CONCRETE MONUMENTS HAVE BEEN PLACED AT ALL POINTS MARKED "O"
 3- SET SOLID IRON BARS 1/2" IN DIA. BY 18" IN LENGTH AT ALL LOT CORNERS
 4- ALL CURVILINEAR MEASUREMENTS ARE ARC DISTANCES
 5- (R) INDICATES A RADIAL LINE
 6- BEARINGS WERE ESTABLISHED FROM MAYFLOWER ESTATES
 RECORDED IN LIBER 17 PAGES 27 AND 28



John W. Martin
JOHN W. MARTIN



SCALE: 1 INCH = 100 FEET
 0' 50' 100' 150' 200'