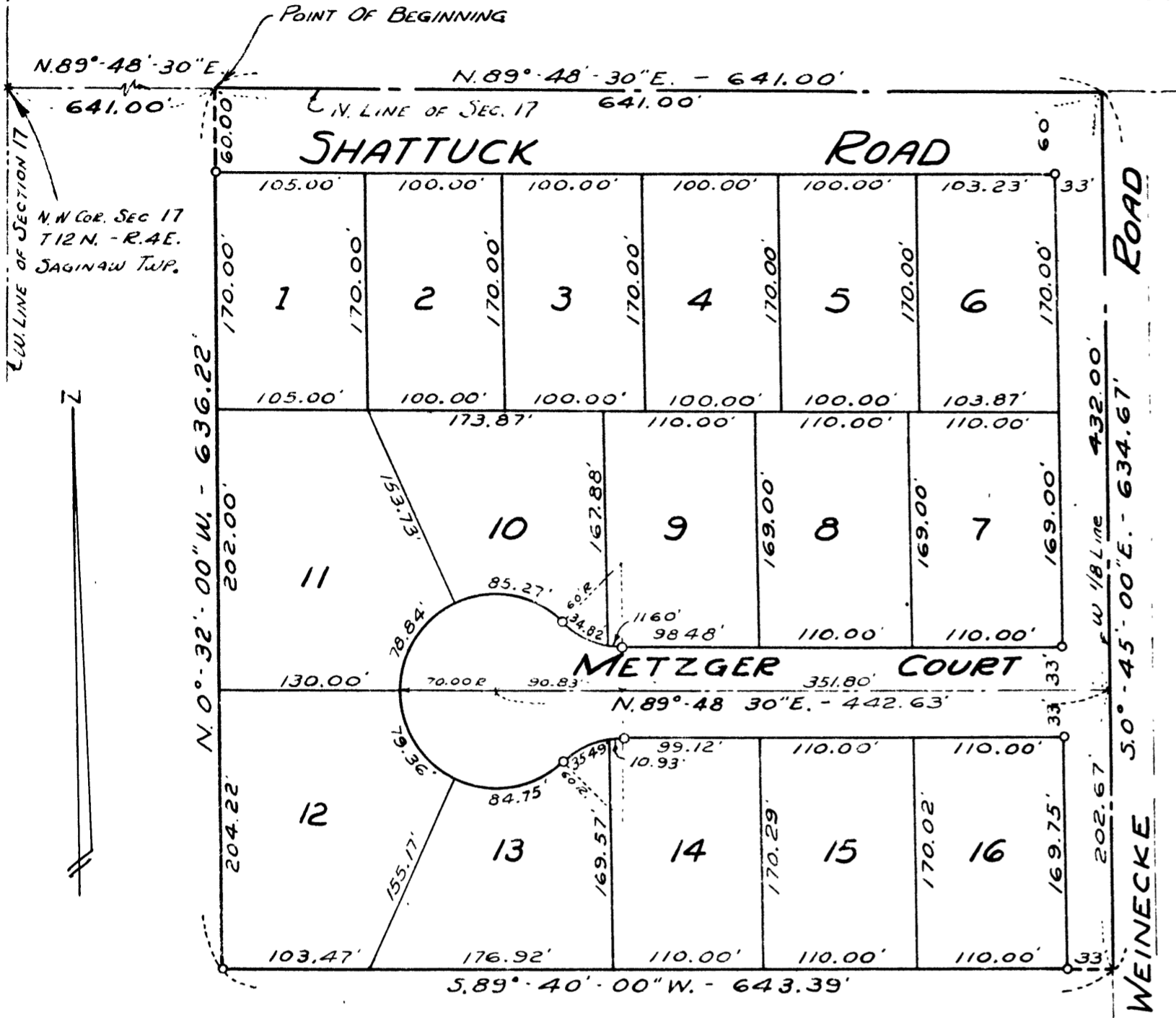


METZGER PLAT

A PART OF N.W. 1/4 OF N.W. 1/4 - SECTION 17, T.12 N.-R.4 E.
SAGINAW TOWNSHIP - SAGINAW COUNTY - MICHIGAN

SCALE: 1 INCH = 100 FEET
0 50 100 200 300 400
ALL DIMENSIONS ARE GIVEN IN FEET AND DECIMALS THEREOF
THE SPICER ENGINEERING COMPANY
SAGINAW, MICHIGAN
1955



CERTIFICATE OF MUNICIPAL APPROVAL

This plat was approved by the Township Board of the Township of Saginaw at a meeting held Sept 15 1955.

Walter Dietzel
Walter Dietzel Clerk

COUNTY TREASURER'S CERTIFICATE RELATING TO TAXES
(Sec. 135, Act 206, 1893 as amended - Sec. 413h, C. L. 1915.)
Office of County Treasurer, Saginaw County

I hereby certify, that there are no tax liens or titles held by the State on the land described hereon, and that there are no tax liens or titles held by individuals on said lands, for the five years preceding the 5th day of August 1955, and that the taxes for said period of five years are paid, as shown by the records of this office.

This certificate does not apply to taxes, if any, now in process of collection by township, city or village collecting officers.

Carl O. Little
Carl O. Little County Treasurer

CERTIFICATE OF APPROVAL BY CITY PLANNING COMMISSION

This plat was approved by the City Planning Commission of the City of Saginaw, Michigan, at a meeting held on the 28th day of June 1955.

Russel O. Koenig
Russel O. Koenig Director

CERTIFICATE OF APPROVAL BY THE COUNTY PLAT BOARD

This plat was approved by the County Plat Board of Saginaw County, Michigan this 27th day of September 1955.

Clara P. Turuk
Clara P. Turuk, Register of Deeds-Chairman
Peter Girard
Peter Girard Auditor
George Cavanaugh
George Cavanaugh Auditor
William A. Case
William A. Case Auditor

CERTIFICATE OF APPROVAL BY BOARD OF COUNTY ROAD COMMISSIONERS

This plat has been examined and was approved on the 9th day of August 1955 by the Saginaw County Board of Road Commissioners.

The Board of County Road Commissioners of Saginaw County, Michigan, assume no responsibility for the improvement or maintenance of the Roads or Streets shown on this Plat until such time as the following conditions have been met and approved by this Board.

All Roads and Streets are to be graded and drained with necessary drainage structures installed and a roadway surface, which shall consist of crushed stone or natural gravel conforming to Michigan State Highway Department Specifications 21A. The surface shall have a minimum width of 18 feet and a compacted thickness of 6 inches. When crushed stone is used the top 2 inches shall be 21A with screenings added to provide a dense wearing course.

Albert M. Wille
Albert M. Wille Chairman
William M. Trim
William M. Trim Member
Frank Dudewicz
Frank Dudewicz Member

DEDICATION

KNOW ALL MEN BY THESE PRESENTS, That We, Walter J. Metzger and Mildred I. Metzger, his wife, as proprietors, have caused the land embraced in the annexed plat to be surveyed, laid out and platted to be known as METZGER PLAT, A Part Of N.W. 1/4 Of N.W. 1/4, Section 17, T.12 N.-R.4 E., Saginaw Township, Saginaw County, Michigan, and that the roads and court as shown on said plat are hereby dedicated to the use of the public.

Signed and Sealed in the Presence of)
Elmer Spaedt
Elmer Spaedt
Otto Schiesswohl
Otto Schiesswohl
Walter J. Metzger
Walter J. Metzger (L.S.)
Mildred I. Metzger
Mildred I. Metzger

ACKNOWLEDGMENT

STATE OF MICHIGAN) ss.
County of Saginaw)

On this 8th day of July 1955, before me, a Notary Public, in and for said County, personally came the above named Walter J. Metzger and Mildred I. Metzger, his wife, known to me to be the persons who executed the above dedication and acknowledged the same to be their free act and deed.

Estelle M. Bryan
Estelle M. Bryan
Notary Public, Saginaw County, Michigan
My Commission Expires May 16, 1958
May 16, 1958

DESCRIPTION

The land embraced in the annexed plat of METZGER PLAT, A Part Of N.W. 1/4 Of N.W. 1/4, Section 17, T.12 N.-R.4 E., Saginaw Township, Saginaw County, Michigan, is described as follows: Commencing at a point on the North line of said Section 17, 641.00 feet N.89°-48'-30"E., along said line from the Northwest corner of said Section; thence N.89°-48'-30"E., on the North line of Section 17, 641.00 feet to the West 1/8th line of said Section; thence S.00°-45'-00"E., on said eighth line 634.67 feet; thence S.89°-40'-00"W., 643.39 feet; thence N.00°-32'-00"W., 636.22 feet to the point of beginning. This plat includes 16 lots numbered consecutively from 1 to 16 inclusive.

SURVEYOR'S CERTIFICATE

I hereby certify that the plat hereon delineated is a correct one and that permanent metal monuments consisting of bars not less than one-half inch in diameter and 36 inches in length, or shorter bars of not less than one-half inch in diameter lapped over each other at least 6 inches with an over-all length of not less than 36 inches, encased in a concrete cylinder at least 4 inches in diameter and 36 inches in depth have been placed at points marked thus o as thereon shown at all angles in the boundaries of the land platted, at all intersections of streets, at points of curvature and points of tangency in street lines, and at the intersections of streets with the boundaries of the plat as shown on said plat.

Clifford H. Spicer
Clifford H. Spicer-Registered Land Surveyor

COPY

Recorder's Office } ss.
County }
Date of _____
Was Recorded this _____ day of _____
A.D., 19____ at _____
M. in _____
Page _____

and by certify this copy is a true copy of map or plat as filed in the Register of Deeds for recording.

_____ Dept.

_____ Dept.

_____ Dept.

_____ Dept.

_____ Dept.

_____ Dept.

_____ Dept.

_____ Dept.

_____ Dept.

_____ Dept.

_____ Dept.