

Jun 25-1928
 J. L. Hurrell

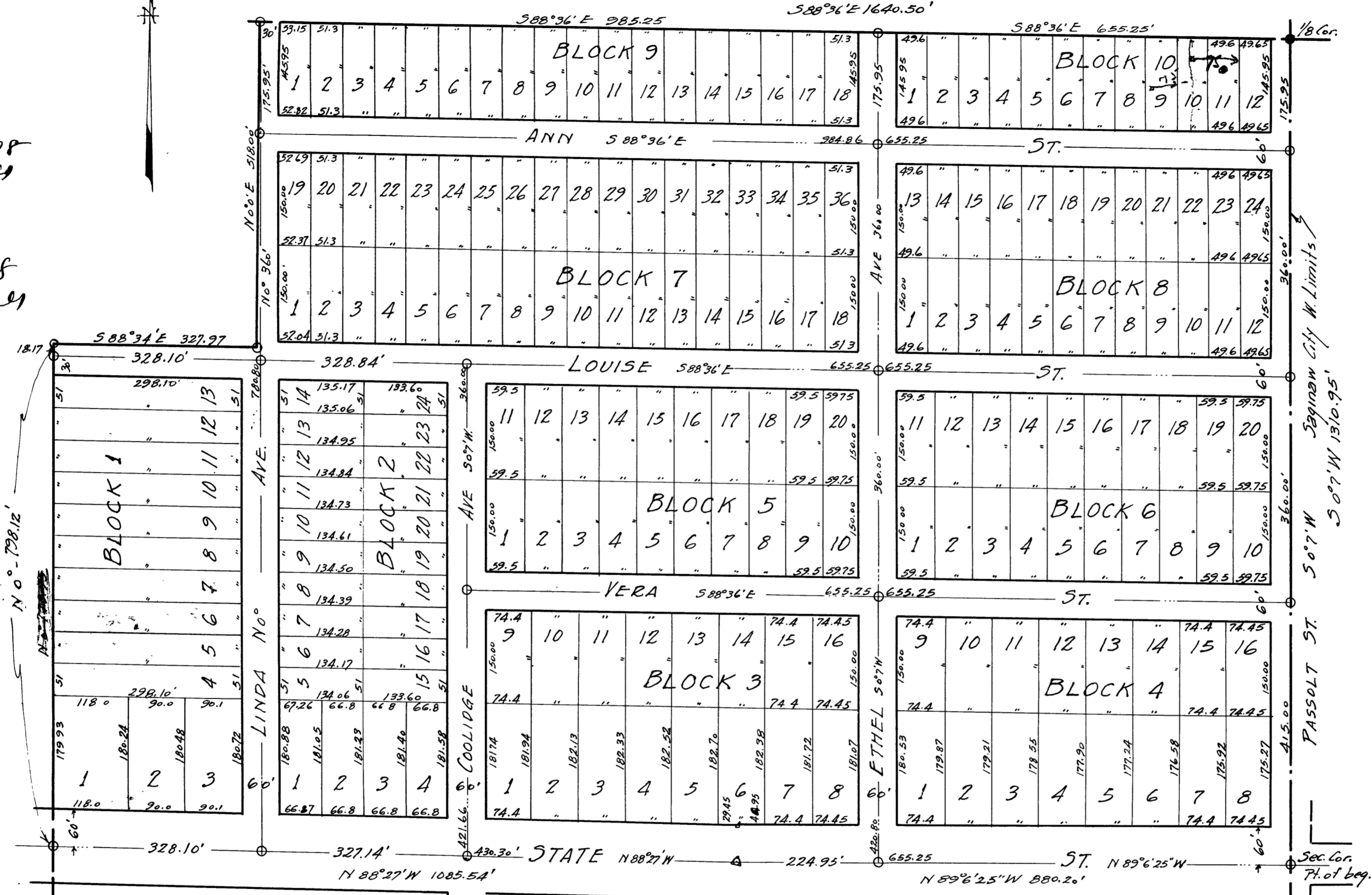
Saginaw
 Muehlenbeck
 26
 Jan 28 10:10
 5 1/2
 E. B. Hesse

MUEHLENBECK

Sub-division of the S.E. 1/4 of the S.E. 1/4
 plus the E. 1/2 of the E. 1/2 of the S.W. 1/4 of
 the S.E. 1/4 and the E. six Acres of the W.
 thirty Acres of the S.W. 1/4 of the S.E. 1/4 of
 Sec. 16, T12N, R4E in Saginaw Twp.
 Saginaw Co Michigan.

Jan 25-1928
 J. L. Hurrell

Jan 30-1928
 J. L. Hurrell



COUNTY TREASURERS CERTIFICATE
 Sec. 135 Act 206, 1899 as amended Sec. 4134, C.L. 1915
 Office of County Treasurer, Saginaw Co.
 I hereby certify, that there are no tax liens or titles
 held by the State on the lands described below, and that
 there are no tax liens or titles held by individuals on said
 lands, for five years preceding the 27th day of
December 1927 and that the taxes for said
 period of five years are paid, as shown by the records of
 this office.
 This certificate does not apply to taxes, if any, now in
 process of collection by township, city or village officer.

DESCRIPTION OF LAND PLATTED
 The land embraced in the annexed plat of Muehlenbeck
 Sub. is described as follows: being the S.E. 1/4 of the S.E. 1/4
 plus the E. 1/2 of the E. 1/2 of the S.W. 1/4 of the S.E. 1/4 and the
 E. six Acres of the W. thirty Acres of the S.W. 1/4 of the S.E. 1/4
 of Sec. 16, T12N, R4E, in Saginaw Twp. Saginaw Co. Mich.
 Said land being more fully described as follows; beg. at the
 S.E. corner of Sec. 16, said corner being also on the W.
 limits of the City of Saginaw, running thence along the
 E. of State St. N89°6'25"W 880.2 and N88°27'W 1085.54',
 thence N0° 798.12', thence S88°34'E 327.97', thence N0°E
 118.00' to the E+W. 1/2 Line, thence along said 1/2 Line
 S88°36'E 1640.5 to the E. line of Sec. 16, being also the W.
 limits of the City of Saginaw, thence along said line
 N10°9'55' to point of beginning.

DEDICATION
 I, Charles Muehlenbeck as proprietor, and
Maria Muehlenbeck his wife, have caused the
 land embraced in the annexed plat to be surveyed, laid
 out and platted to be known as Muehlenbeck Sub. of the S.E. 1/4
 of S.E. 1/4 plus E. 1/2 of E. 1/2 of S.W. 1/4 of S.E. 1/4 and the E. six Acres of the W. thirty Acres
 of S.W. 1/4 of S.E. 1/4 of Sec. 16, Saginaw Twp. Saginaw Co. Mich. and that the streets, as
 shown, on said plat are hereby dedicated to the use of the public.
 Signed and sealed in presence of
J. L. Hurrell Notary Public
Charles Muehlenbeck (S)
Maria Muehlenbeck (S)
 STATE OF MICHIGAN,
 County of Saginaw
 On this 27 day of December 1927 before
 me, a Notary Public in and for said county, personally came the
 above named Charles Muehlenbeck and
Maria Muehlenbeck his wife, known to me to be the
 persons who executed the above dedication, and acknowledged
 the same to be their act and deed.
 My commission expires Jan 8 - 1928
 NOTARY PUBLIC SAGINAW CO.

CERTIFICATE OF MUNICIPAL APPROVAL
 This plat was approved by the City Plan Commission of the City
 of Saginaw at a meeting held January 10, 1928
Misses Kroeger
CERTIFICATE OF APPROVAL BY BOARD OF COUNTY AUDITORS
 Approved by the Board of County Auditors of Saginaw Co. Mich.
 this 12th day of January 1928
Misses Kroeger
CERTIFICATE AS TO STATE TRUNK LINE OR FEDERAL AID ROAD
 We hereby certify that said plat appears to include land located
 on a State Trunk Line or Federal Aid Road
Misses Kroeger
 Examined and approved Jan 28, 1928
Frank J. Pizer
 STATE HIGH. COMM.
CERTIFICATE OF MUNICIPAL APPROVAL
 This plat was approved by the Township Board of the Twp. of Saginaw
 at a meeting held December 26, 1927
Edward Stremlin Township
 CLERK

SURVEYORS CERTIFICATE
 I hereby certify that the plat hereon delineated
 is a correct one and that permanent metal monuments
 of not less than 1" in dia. and 15" in length set in a concrete
 base of least 4" in dia. and forty-eight inches in depth have
 been placed at points marked thus (O) as there on shown at
 angles in the boundaries of the land platted, at all inter-
 sections of streets and the intersection of streets with the
 boundaries of the plat as shown on the plat.
 R.M. Roberts, G. Engr.
 Reg. Eng. J. J. Halliday