

# NORTHVIEW SUBDIVISION

A PART OF S.E. 1/4 OF N.W. 1/4 SECTION 15, T.12 N.-R.4 E.

SAGINAW TOWNSHIP, SAGINAW COUNTY, MICHIGAN

SCALE: 1 INCH = 100 FEET

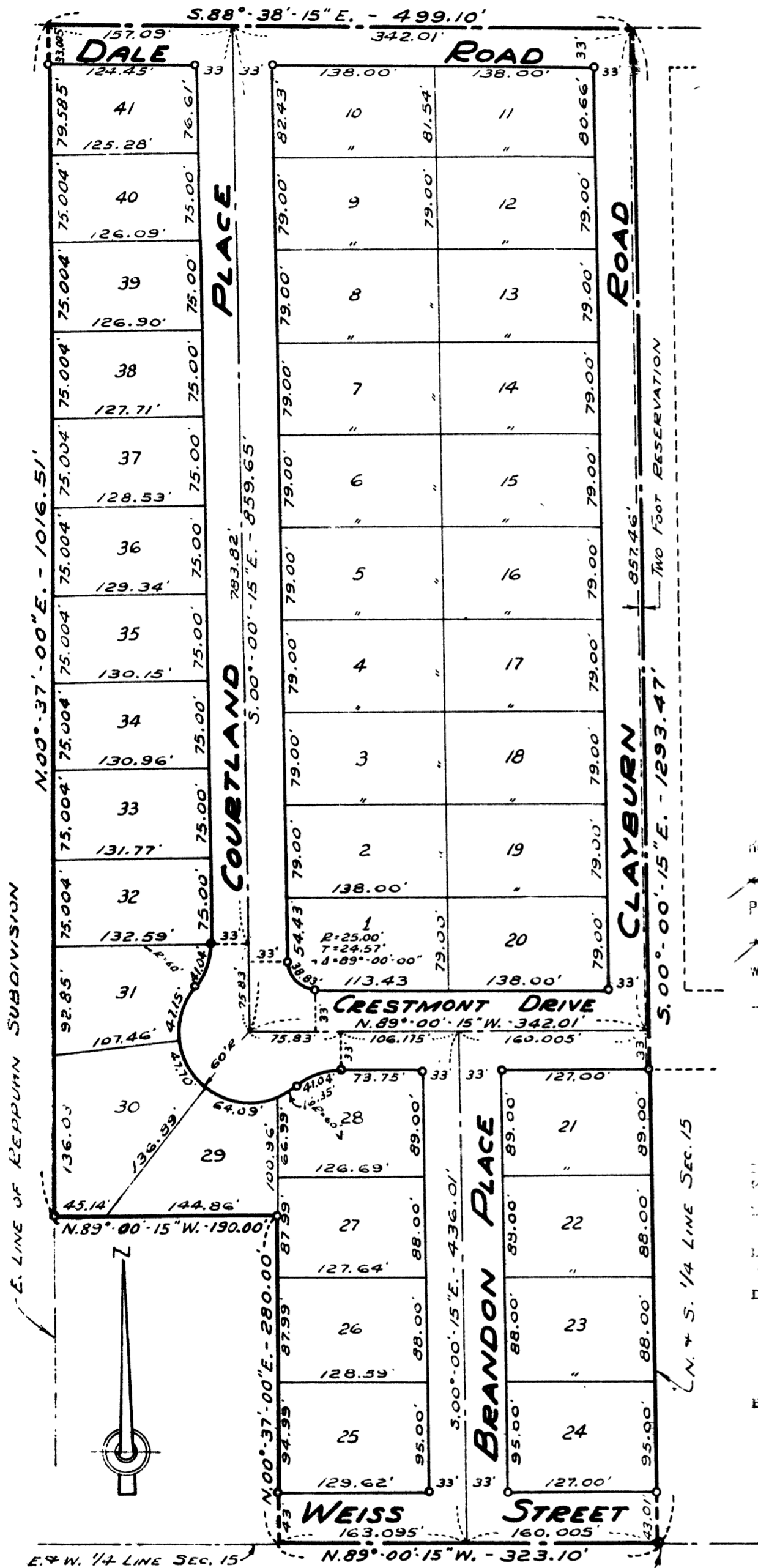
0 50 100 200 300 400

ALL DIMENSIONS ARE GIVEN IN FEET AND DECIMALS THEREOF

THE SPICER ENGINEERING COMPANY

SAGINAW, MICHIGAN

1954



### DEDICATION

KNOW ALL MEN BY THESE PRESENTS, That we, Felix Wolderzak and Alma Wolderzak, his wife, as proprietors, have caused the land embraced in the annexed plat to be surveyed, laid out and platted, to be known as NORTHVIEW SUBDIVISION, A Part Of S.E. 1/4 of N.W. 1/4, Section 15, T.12 N.-R.4 E., Saginaw Township, Saginaw County, Michigan, and that the street, places, roads and drive as shown on said plat are hereby dedicated to the use of the public, Excepting however, from this dedication, land designated "Two Foot Reservation," such land to be dedicated automatically for street purposes at such time as street extensions adjacent thereto are dedicated in adjoining property.

*Felix Wolderzak* (L.S.)  
Felix Wolderzak

Signed and Sealed in the Presence of)

*Alma Wolderzak* (L.S.)  
Alma Wolderzak

*Otto G. Schieswohl*  
Otto G. Schieswohl

*Elmer Spaedt*  
Elmer Spaedt

### ACKNOWLEDGMENT

STATE OF MICHIGAN) ss.  
County of Saginaw)

On this 17th day of December, 1954, before me, a Notary Public, in and for said County, personally came the above named Felix Wolderzak and Alma Wolderzak, his wife, known to me to be the persons who executed the above dedication and acknowledged the same to be their free act and deed.

*Estelle M. Bryan*  
Estelle M. Bryan

My Commission Expires May 16, 1958  
Notary Public, Saginaw County, Michigan  
May 16, 1958

### DESCRIPTION

The land embraced in the annexed plat of NORTHVIEW SUBDIVISION, A Part Of S.E. 1/4 Of N.W. 1/4, Section 15, T.12 N.-R.4 E., Saginaw Township, Saginaw County, Michigan, is described as follows: Commencing at the center of said Section 15, thence N.89°-00'-15"W., on the East and West 1/4 line of said Section, 323.10 feet; thence N.00°-37'-00"E., parallel to the East line of Reppuhn Subdivision, 280.00 feet; thence N.89°-00'-15"W., parallel to the East and West 1/4 line of Section 15, 190.00 feet to the East line of Reppuhn Subdivision; thence N.00°-37'-00"E., on said plat line 106.51 feet; thence S.88°-38'-15"E., 499.10 feet to the North and South 1/4 line of Section 15; thence S.00°-00'-15"E., on said quarter line 1293.47 feet to the point of beginning.

### SURVEYOR'S CERTIFICATE

I hereby certify that the plat hereon delineated is a correct one and that permanent metal monuments consisting of bars not less than one-half inch in diameter and 36 inches in length, or shorter bars of not less than one-half inch in diameter lapped over each other at least 6 inches with an over-all length of not less than 36 inches, encased in a concrete cylinder at least 4 inches in diameter and 36 inches in depth have been placed at points marked thus o as thereon shown at all angles in the boundaries of the land platted, at all intersections of streets, at points of curvature and points of tangency in street lines, and at the intersections of streets with the boundaries of the plat as shown on said plat.

*Clifford H. Spicer*  
Clifford H. Spicer-Registered Land Surveyor

### CERTIFICATE OF APPROVAL BY BOARD OF COUNTY ROAD COMMISSIONERS

This plat has been examined and was approved on the 8 day of FEBRUARY, 1955 by the Saginaw County Board of Road Commissioners.

The Board of Road Commissioners of Saginaw County, Michigan, assumes no responsibility for the improvement or maintenance of the streets and roads shown on this plat until such time as they have been graded and drained with the necessary drainage structures installed and a gravel, slag, or cinder surface having a compacted thickness of at least 6 inches and a width of at least 18 feet has been applied and approved by this board.

*Albert M. Wille*  
Albert M. Wille Chairman

*William M. J...*  
Member

*Frank Dulawicz*  
Member

### CERTIFICATE OF MUNICIPAL APPROVAL

This plat was approved by the Township Board of the Township of Saginaw at a meeting held February 12, 1955 (Date)

*Walter Dietzel*  
Walter Dietzel Clerk

COUNTY TREASURER'S CERTIFICATE RELATING TO TAXES  
(Sec. 135, Act 206, 1893 as amended - Sec. 4134, C.L. 1915.)  
Office of County Treasurer, Saginaw County

I hereby certify, that there are no tax liens or titles held by the State on the land described hereon, and that there are no tax liens or titles held by individuals on said lands, for the five years preceding the 23rd day of December, 1954, and that the taxes for said period of five years are all paid, as shown by the records of this office.

This certificate does not apply to taxes, if any, now in process of collection by township, city or village collecting officers.

*Carl O. Little*  
Carl O. Little County Treasurer

COPY  
Register's Office  
Saginaw County, ss.  
Plat of Northview Subdivision,  
Saginaw Township  
was recorded this 5th day of  
April, A.D., 1955 at 9:10 o'clock  
A.M. in Liber 9 of Plats

Page 1  
*Clara P. Turek*  
Clara P. Turek  
Register of Deeds

April 4, 1955  
Notary Public

April 4, 1955  
Notary Public

April 4, 1955  
Notary Public

*Walter Ferguson*  
Walter Ferguson  
Auditor General

*D. L. Mac Eby*  
D. L. Mac Eby  
Plat Engineer

### CERTIFICATE OF APPROVAL BY THE COUNTY PLAT BOARD

This plat was approved by the County Plat Board of Saginaw County, Michigan this 9th day of March, 1955.

*Clara P. Turek*  
Clara P. Turek, Register of Deeds-Chairman

*Peter Girard*  
Peter Girard Auditor

*George Cavanaugh*  
George Cavanaugh Auditor

*William A. Case*  
William A. Case Auditor

### CERTIFICATE OF APPROVAL BY CITY PLANNING COMMISSION

This plat was approved by the City Planning Commission of the City of Saginaw, Michigan, at a meeting held on the 23rd day of November, 1954

*Russel O. Koenig*  
Russel O. Koenig Director