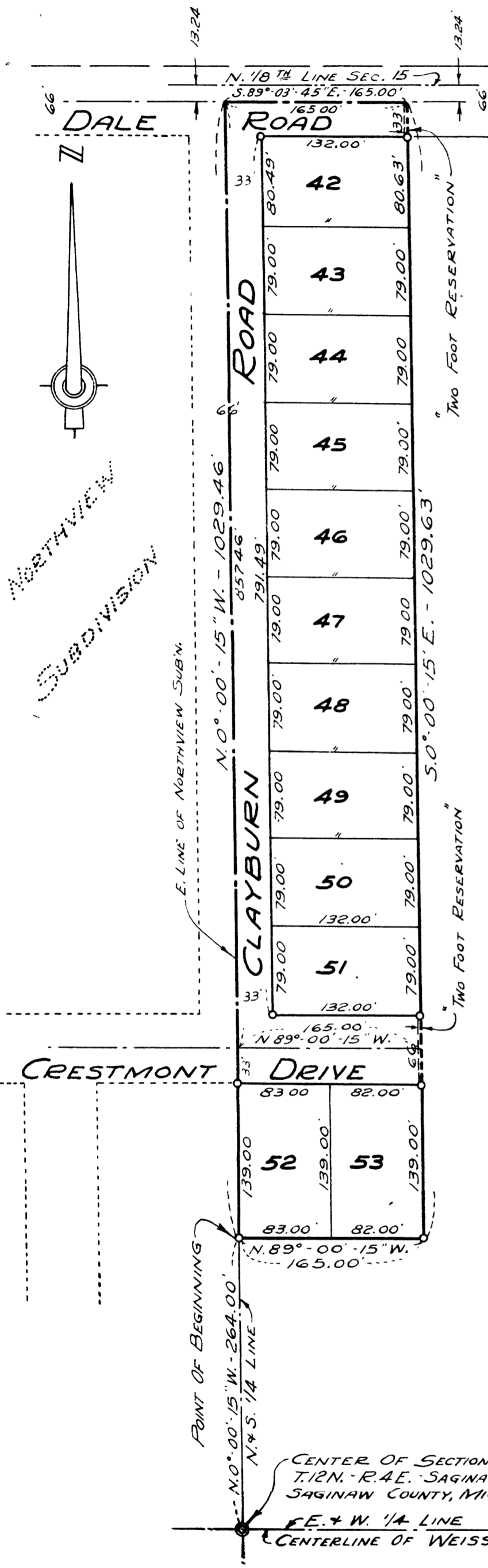


# NORTHVIEW SUBDIVISION "A"

## A PART OF N.E. 1/4 OF SECTION 15, T.12N.-R.4E. SAGINAW TOWNSHIP - SAGINAW COUNTY - MICHIGAN

SCALE: 1 INCH = 100 FEET  
0 50 100 200 300 400  
ALL DIMENSIONS ARE GIVEN IN FEET AND DECIMALS THEREOF  
THE SPICER ENGINEERING COMPANY  
SAGINAW, MICHIGAN  
MARCH, 1956



COPY

Register's Office  
Saginaw County, ss.  
Plat of Northview Subdivision A  
was Recorded this 10th day of April  
1956 A.D., at 10 o'clock  
4 A.M. in Liber 13 of 100  
in Page 1  
REGISTER OF DEEDS

I hereby certify this copy is a true copy of map or plat forwarded the Register of Deeds for recording.  
Date April 10, 1956  
Filed in Auditor General's Dept.  
Date April 10, 1956  
Examined and approved  
Date April 10, 1956  
Field J. Argonstein  
Auditor General  
By C. E. Spicer  
Plat Engineer

DEDICATION

KNOW ALL MEN BY THESE PRESENTS, That we, Frank M. Schmittgen and Jessie I. Schmittgen, his wife, as proprietors, have caused the land embraced in the annexed plat to be surveyed, laid out and platted to be known as NORTHVIEW SUBDIVISION "A", A Part of N.E. 1/4 of Section 15, T.12 N.-R.4 E., Saginaw Township, Saginaw County, Michigan, and that the roads and drive as shown on said plat are dedicated to the use of the public, Excepting, However, from this dedication land designated "Two Foot Reservation," such land to be dedicated automatically for street purposes at such time as street extensions adjacent thereto are dedicated in adjoining property.

Frank M. Schmittgen (L.S.)  
Frank M. Schmittgen  
Jessie I. Schmittgen (L.S.)  
Jessie I. Schmittgen

Signed and Sealed in the Presence of  
Estelle M. Bryan  
Estelle M. Bryan  
C. E. Spicer  
C. E. Spicer

ACKNOWLEDGMENT

STATE OF MICHIGAN) ss.  
County of Saginaw)  
On this 10th day of April 1956, before me, a Notary Public in and for said County, personally came the above named Frank M. Schmittgen and Jessie I. Schmittgen, his wife, known to me to be the persons who executed the above dedication and acknowledged the same to be their free act and deed.

Estelle M. Bryan  
Estelle M. Bryan  
My Commission Expires May 16, 1958  
Notary Public, Saginaw County, Michigan

DESCRIPTION

The land embraced in the annexed plat of NORTHVIEW SUBDIVISION "A", A Part of N.E. 1/4 of Section 15, T.12 N.-R.4 E., Saginaw Township, Saginaw County, Michigan, is described as follows: Commencing at a point on the North and South 1/2 line of said Section 15, 264.00 feet N.00°-00'-15"W., along said line from the center of said Section; thence continuing N.00°-00'-15"W., on said North and South 1/2 line 1029.46 feet; thence S.89°-03'-45"E., 165.00 feet; thence S.00°-00'-15"E., 1029.63 feet; thence N.89°-00'-15"W., 165.00 feet to the point of beginning. This plat consists of 12 Lots numbered consecutively from 42 to 53 inclusive.

SURVEYOR'S CERTIFICATE

I hereby certify that the plat hereon delineated is a correct one and that permanent metal monuments consisting of bars not less than one-half inch in diameter and 36 inches in length, or shorter bars of not less than one-half inch in diameter lapped over each other at least 6 inches with an over-all length of not less than 36 inches, encased in a concrete cylinder at least 4 inches in diameter and 36 inches in depth have been placed at points marked thus o o as thereon shown at all angles in the boundaries of the plat, at all intersections of streets, and at the intersections of streets with the boundaries of the plat as shown on said plat.

Clifford H. Spicer  
Clifford H. Spicer Registered Land Surveyor

CERTIFICATE OF APPROVAL BY CITY PLANNING COMMISSION

This plat was approved by the City Planning Commission of the City of Saginaw, Michigan, at a meeting held on the 11th day of April 1956.

Russel O. Koenig  
Russel O. Koenig Director

CERTIFICATE OF MUNICIPAL APPROVAL

This plat was approved by the Township Board of the Township of Saginaw at a meeting held April 11, 1956.  
(Date)

Walter Dietzel  
Walter Dietzel Clerk

COUNTY TREASURER'S CERTIFICATE RELATING TO TAXES  
(Sec. 135, Act 206, 1893 as amended - Sec. 4134, C. L. 1915.)  
Office of County Treasurer, Saginaw County

I hereby certify, that there are no tax liens or titles held by the State on the land described hereon, and that there are no tax liens or titles held by individuals on said lands, for the five years preceding the 11th day of May 1956, and that the taxes for said period of five years are all paid, as shown by the records of this office.

This certificate does not apply to taxes, if any, now in process of collection by township, city or village collecting officers.

Carl U. Little  
Carl U. Little County Treasurer

CERTIFICATE OF APPROVAL BY THE COUNTY PLAT BOARD

This plat was approved by the County Plat Board of Saginaw County, Michigan this 14th day of May 1956.

Class E. Turek  
Class E. Turek, Register of Deeds-Chairman  
Peter Girard  
Peter Girard Auditor  
George Cavanaugh  
George Cavanaugh Auditor  
William A. Case  
William A. Case Auditor

CERTIFICATE OF APPROVAL BY BOARD OF COUNTY ROAD COMMISSIONERS

This plat has been examined and was approved on the 24th day of April 1956 by the Saginaw County Board of Road Commissioners.

The Board of County Road Commissioners of Saginaw County, Michigan, assume no responsibility for the improvement or maintenance of the roads or streets shown on this Plat until such time as the following conditions have been met and approved by this Board.

All roads and streets are to be graded and drained with necessary drainage structures installed and a roadway surface, which shall consist of crushed stone or natural gravel conforming to Michigan State Highway Department Specifications 21A. The surface shall have a minimum width of 18 feet and a compacted thickness of 6 inches. When crushed stone is used the top 2 inches shall be 21A with screenings added to provide a dense wearing course.

Albert M. Wille  
Albert M. Wille Chairman  
William M. Trin  
William M. Trin Member  
Frank Dudewicz  
Frank Dudewicz Member