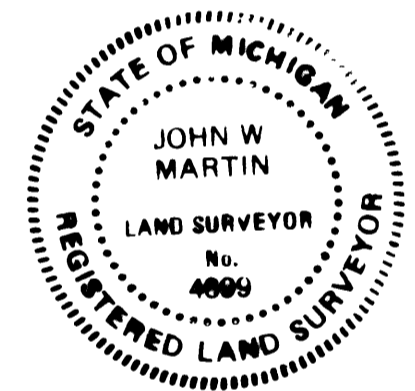
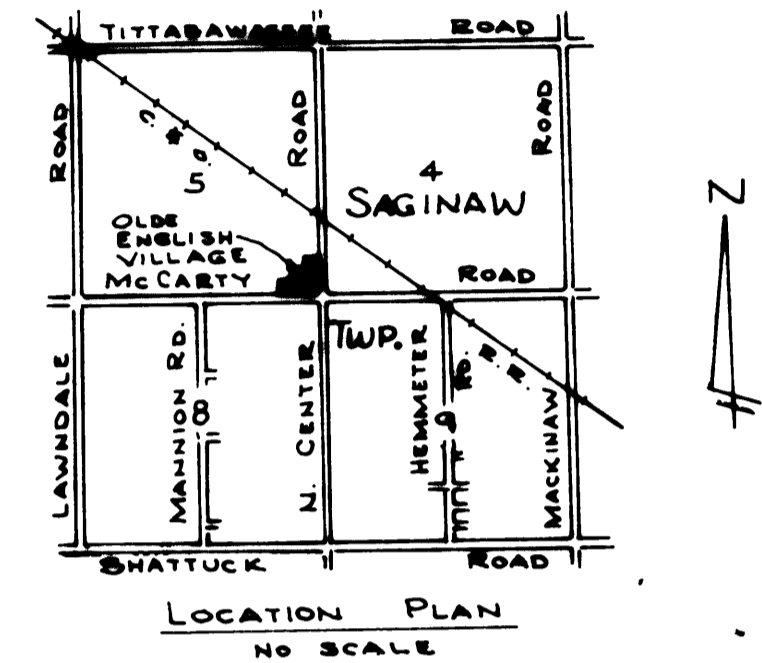
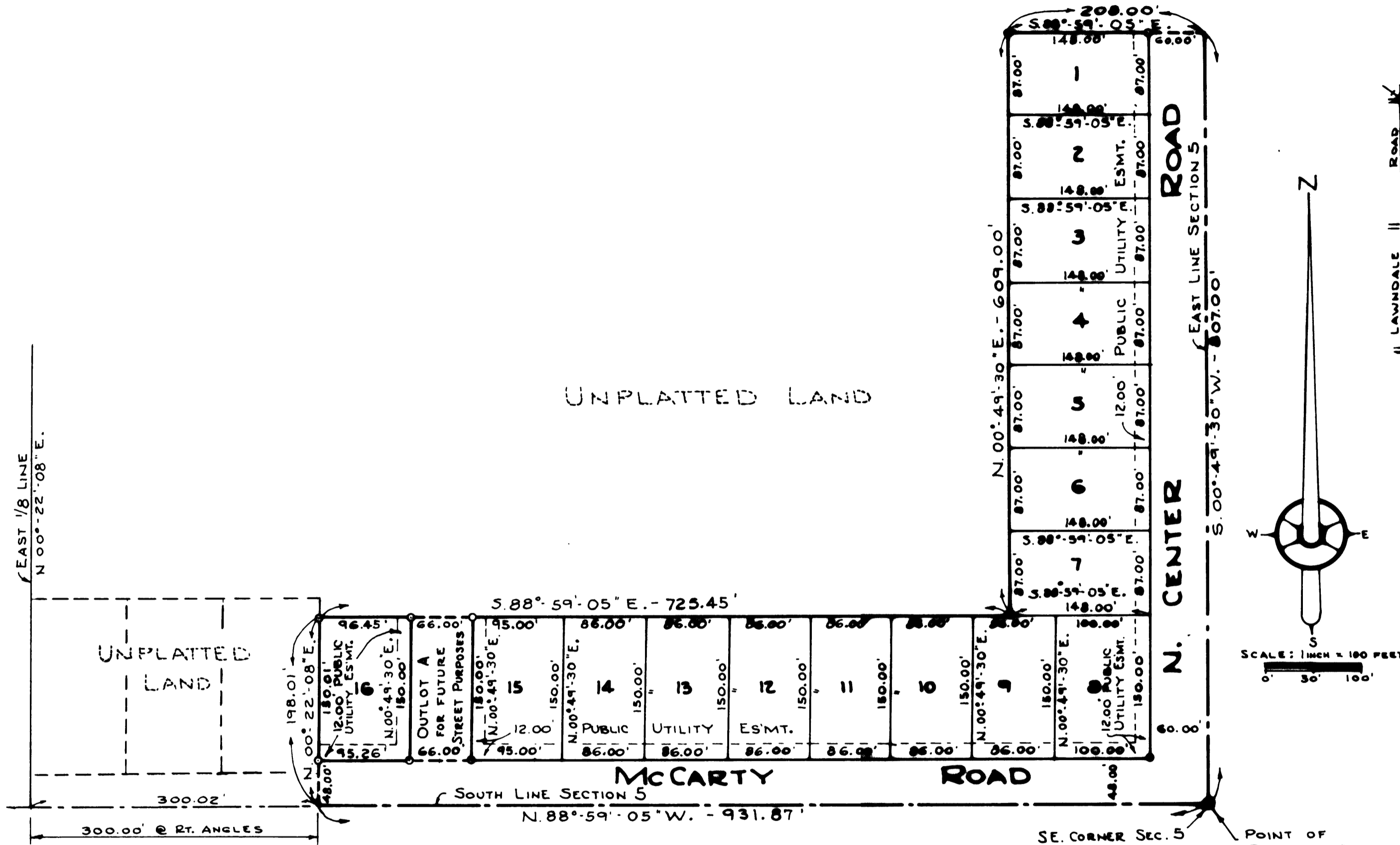


OLDE ENGLISH VILLAGE

PART OF THE SOUTHEAST 1/4 OF SECTION 5, T.12 N. - R.4 E.
SAGINAW TOWNSHIP, SAGINAW COUNTY, MICHIGAN

UNPLATTED LAND



CERTIFIED TRUE COPY OF RECORDED PLAT
Loren E. Monroe
LOREN E. MONROE
STATE TREASURER
By *Richard J. Somerville*
Richard E. Larson, Plat Examiner
on *November 29, 1979*

- NOTE:
- 1 ALL DIMENSIONS ARE GIVEN IN FEET
 - 2 CONCRETE MONUMENTS HAVE BEEN PLACED AT ALL POINTS MARKED "O"
 - 3 SET SOLID IRON BARS 1/2" IN DIA. BY 18" IN LENGTH AT ALL LOT CORNERS
 - 4 BEARINGS WERE DERIVED FROM THE PLAT OF BEVERLY HEIGHTS RECORDED IN LIBER 20, PAGES 37 AND 38.

SE. CORNER SEC. 5
T. 12 N. - R. 4 E.
SAGINAW TOWNSHIP
SAGINAW Co., MICHIGAN