

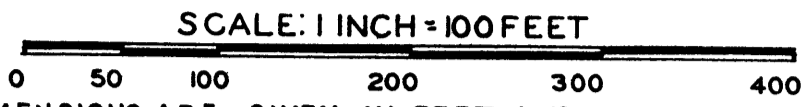
PINECONE PLACE

A PART OF S.E. 1/4 OF S.E. 1/4 SECTION 17, T.12 N.-R.4 E.

SAGINAW TOWNSHIP, SAGINAW COUNTY, MICHIGAN

Register's Office
County, ss.
Plat of
was Recorded this day of
A.D., 1955 at o'clock
M. in Liber of
in Page

I hereby certify this copy is a true copy of map or plat forwarded the Register of Deeds for recording.
Date
Filed in Auditor General's Dept.
Date
Examined and approved
Date



ALL DIMENSIONS ARE GIVEN IN FEET AND DECIMALS THEREOF

THE SPICER ENGINEERING COMPANY

SAGINAW, MICHIGAN

1955

V. J. Targem
Auditor General
By *A. L. Mac Elroy*
Register of Deeds

DESCRIPTION

The land embraced in the annexed plat of PINECONE PLACE, A Part Of S.E. 1/4 Of S.E. 1/4, Section 17, T.12 N.-R.4 E., Saginaw Township, Saginaw County, Michigan, is described as follows: Commencing at a point on the South line of said Section 17, 1654.01 feet Due East along said line from the South 1/4 post of said Section; thence N.01°-12'-00"W., on the East line of Boehm Subdivision, 1308.36 feet to the South eighth line of Section 17; thence S.89°-56'-00"E., on said eighth line 328.58 feet; thence S.01°-17'-48"E., 1307.98 feet to the South line of Section 17; thence Due West on said Section line 330.80 feet to the point of beginning.

SURVEYOR'S CERTIFICATE

I hereby certify that the plat hereon delineated is a correct one and that permanent metal monuments consisting of bars not less than one-half inch in diameter and 36 inches in length, or shorter bars of not less than one-half inch in diameter lapped over each other at least 6 inches with an over-all length of not less than 36 inches, encased in a concrete cylinder at least 4 inches in diameter and 36 inches in depth have been placed at points marked thus o as thereon shown at all angles in the boundaries of the land platted, at all intersections of streets, at points of curvature and points of tangency in street lines, and at the intersections of streets with the boundaries of the plat as shown on said plat.

Clifford H. Spicer
Clifford H. Spicer - Registered Land Surveyor

DEDICATION

KNOW ALL MEN BY THESE PRESENTS, That We, Fred J. Bernecker and Edwina L. Bernecker, his wife; and William F. Schaper and Fredricke C. Schaper, his wife, as proprietors, have caused the land embraced in the annexed plat to be surveyed, laid out and platted to be known as PINECONE PLACE, A Part Of S.E. 1/4 Of S.E. 1/4, Section 17, T.12 N.-R.4 E., Saginaw Township, Saginaw County, Michigan, and that the streets and court as shown on said plat are hereby dedicated to the use of the public.

 (L.S.)
Fred J. Bernecker

Signed and Sealed in the Presence of)

 (L.S.)
Edwina L. Bernecker

Estelle M. Bryan

William F. Schaper
William F. Schaper (L.S.)

C. H. Spicer
C. H. Spicer

Fredricke C. Schaper
Fredricke C. Schaper (L.S.)

ACKNOWLEDGMENT

STATE OF MICHIGAN) ss.
County of Saginaw)

On this day of , 1955, before me, a Notary Public, in and for said County, personally came the above named Fred J. Bernecker and Edwina L. Bernecker, his wife; and William F. Schaper and Fredricke C. Schaper, his wife, known to me to be the persons who executed the above dedication and acknowledged the same to be their free act and deed.

My Commission Expires
May 16, 1958

Estelle M. Bryan
Estelle M. Bryan
Notary Public, Saginaw County, Michigan

COUNTY TREASURER'S CERTIFICATE RELATING TO TAXES
(Sec. 135, Act 206, 1893 as amended - Sec. 4134, C. L. 1915.)
Office of County Treasurer, Saginaw County

I hereby certify, that there are no tax liens or titles held by the State on the land described hereon, and that there are no tax liens or titles held by individuals on said lands, for the five years preceding the 4th day of December, 1955, and that the taxes for said period of five years are paid, as shown by the records of this office.

This certificate does not apply to taxes, if any, now in process of collection by township, city or village collecting officers.

Carl O. Little
Carl O. Little
County Treasurer

CERTIFICATE OF APPROVAL BY CITY PLANNING COMMISSION

This plat was approved by the City Planning Commission of the City of Saginaw, Michigan, at a meeting held on the 25th day of October, 1955.

Russel O. Koenig
Russel O. Koenig
Director

CERTIFICATE OF APPROVAL BY THE COUNTY PLAT BOARD

This plat was approved by the County Plat Board of Saginaw County, Michigan, this 15th day of December, 1955.

Clara P. Turek
Clara P. Turek, Register of Deeds - Chairman

Peter Girard
Peter Girard
Auditor

George Cavanaugh
George Cavanaugh
Auditor

William A. Case
William A. Case
Auditor

CERTIFICATE OF APPROVAL BY BOARD OF COUNTY ROAD COMMISSIONERS

This plat has been examined and was approved on the 22 day of November, 1955 by the Saginaw County Board of Road Commissioners.

The Board of County Road Commissioners of Saginaw County, Michigan, assume no responsibility for the improvement or maintenance of the Roads or Streets shown on this plat until such time as the following conditions have been met and approved by this Board.

All Roads and Streets are to be graded and drained with necessary drainage structures installed and a roadway surface, which shall consist of crushed stone or natural gravel conforming to Michigan State Highway Department Specifications 21A. The surface shall have a minimum width of 18 feet and a compacted thickness of 6 inches. When crushed stone is used the top 2 inches shall be 21A with screenings added to provide a dense wearing course.

Albert M. Wille
Albert M. Wille
Chairman

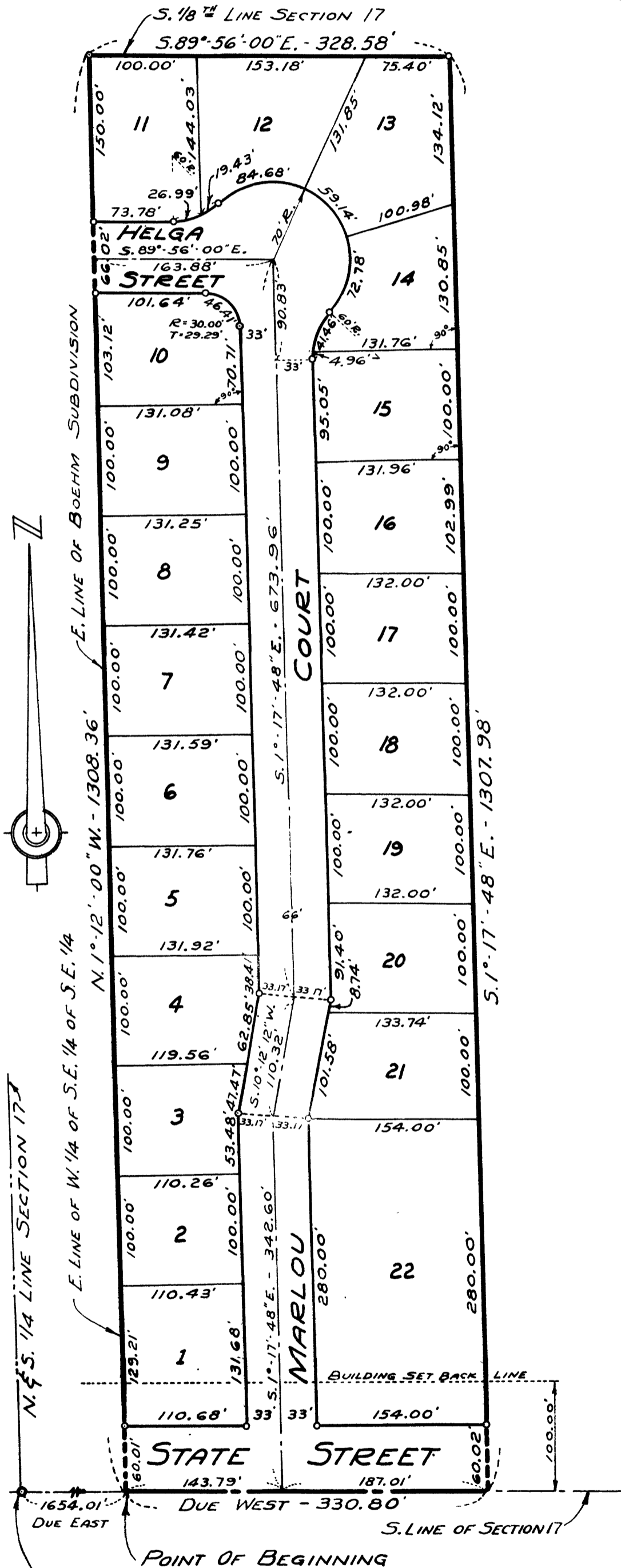
William M. Trim
William M. Trim
Member

Frank Dudewicz
Frank Dudewicz
Member

CERTIFICATE OF MUNICIPAL APPROVAL

This plat was approved by the Township Board of the Township of Saginaw at a meeting held on the 5th day of December, 1955.

Walter Dietzel
Walter Dietzel
Clerk



S. 1/4 Post SECTION 17
T. 12 N. - R. 4 E.
SAGINAW, TOWNSHIP