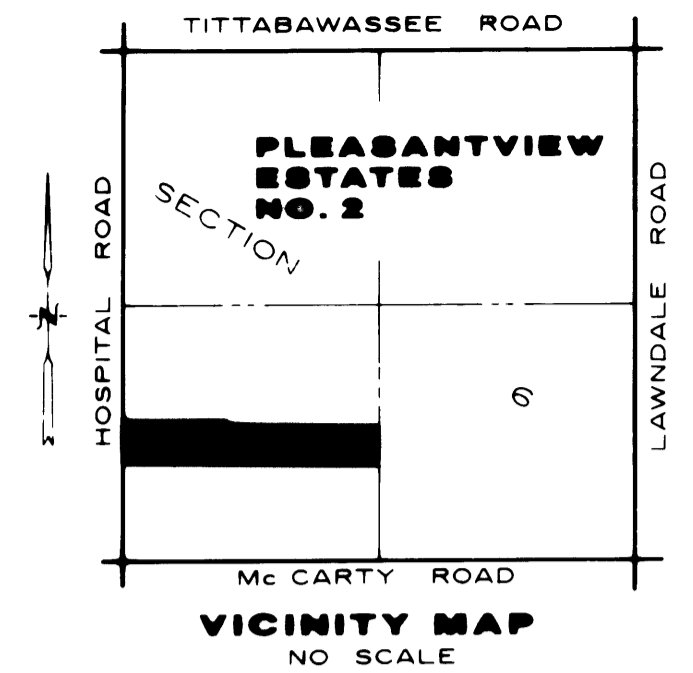


PLEASANTVIEW ESTATES NO. 2

PART OF THE SW 1/4 OF FRACTIONAL SECTION 6, T.12N.-R.4E.
SAGINAW TOWNSHIP, SAGINAW COUNTY, MICHIGAN



SHEET 1 OF 3

WEST 1/4 CORNER
SECTION 6,
T. 12 N. - R. 4 E.
LIBER 5, PAGE 14



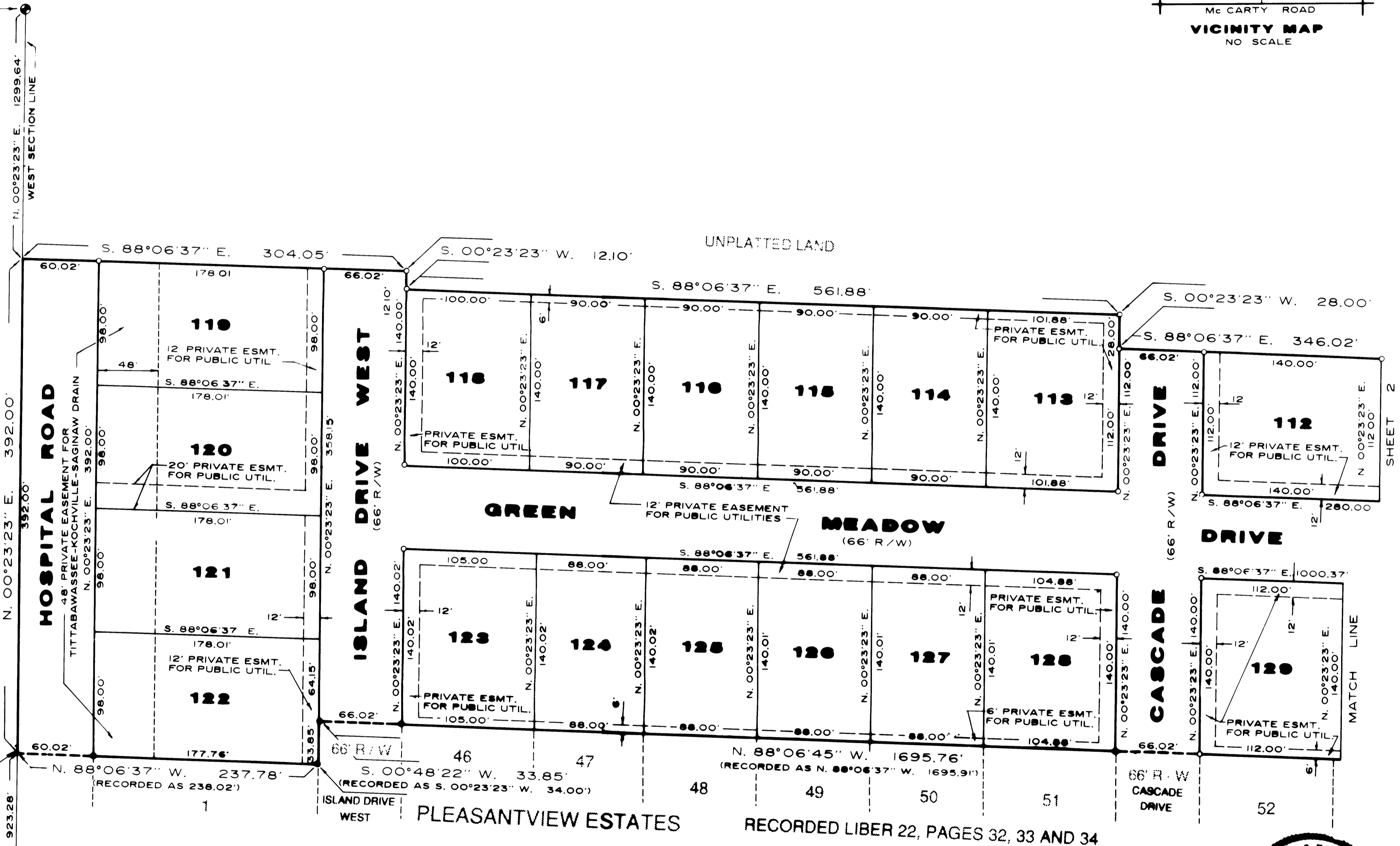
SCALE 1" = 60'



LEGEND

- (1) ALL DIMENSIONS ARE GIVEN IN FEET.
- (2) MONUMENTS, CONSISTING OF IRON RODS ONE HALF INCH IN DIAMETER AND 36 INCHES IN LENGTH WITH CAP NO. 26454, ENCASED IN CONCRETE CYLINDERS 4 INCHES IN DIAMETER AND 36 INCHES IN LENGTH, HAVE BEEN PLACED AT ALL POINTS SHOWN BY SYMBOL "O".
- (3) "••" INDICATES FOUND CONCRETE MONUMENT
- (4) SET 1/2 INCH IRON ROD, 18 INCHES IN LENGTH, WITH CAP NO. 26454, AT ALL LOT CORNERS.
- (5) BEARINGS WERE DERIVED FROM "PLEASANTVIEW ESTATES", RECORDED IN LIBER 22, PAGES 32, 33 AND 34

UNPLATTED LAND



POINT OF BEGINNING

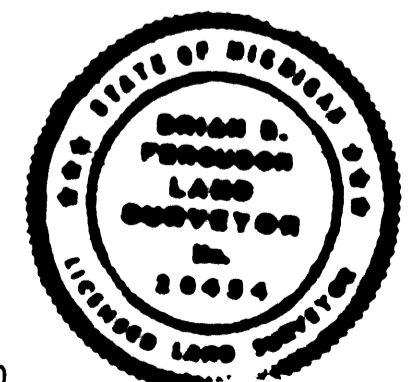
SOUTHWEST CORNER
SECTION 6,
T. 12 N. - R. 4 E.
LIBER 5, PAGE 14

RECORDING CERTIFICATE

State of Michigan }
Saginaw County }

This plat was received for record on the 14 day of November
1990 at 2:26 P.M., and recorded in Liber 24 of
plats on Page(s) 19, 20 & 21

Mildred M. Dodak
Mildred M. Dodak, Register of Deeds



Brian D. Ferguson
Brian D. Ferguson, L.L.S.
Licensed Land Surveyor No.
26454

SHEET 2