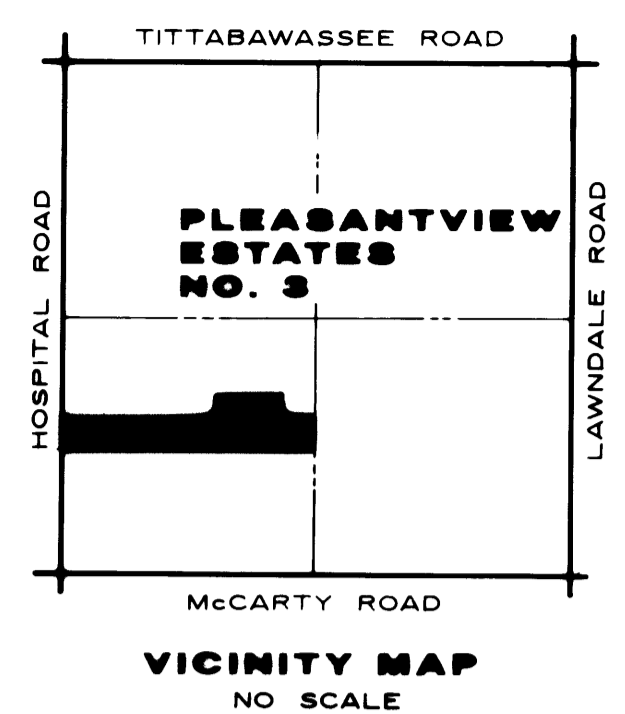
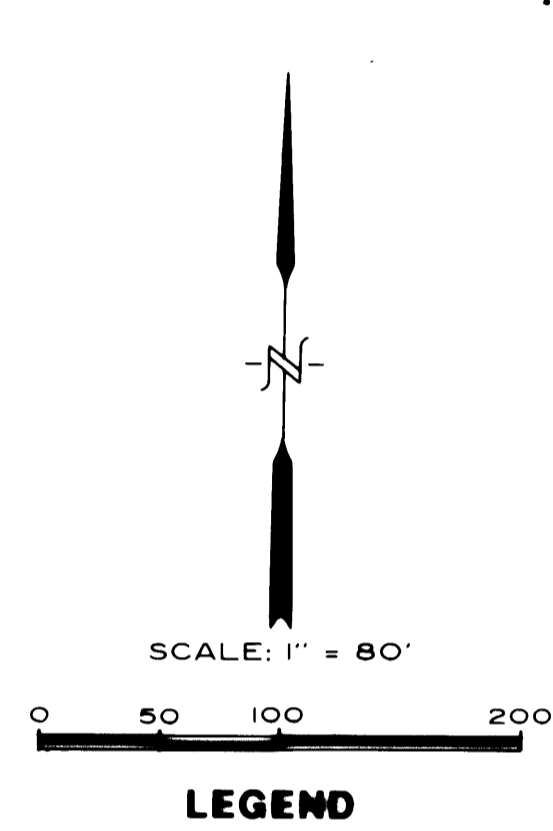


# PLEASANTVIEW ESTATES NO. 3

PART OF THE SW 1/4 OF FRACTIONAL SECTION 6, T.12N.-R.4E.  
SAGINAW TOWNSHIP, SAGINAW COUNTY, MICHIGAN

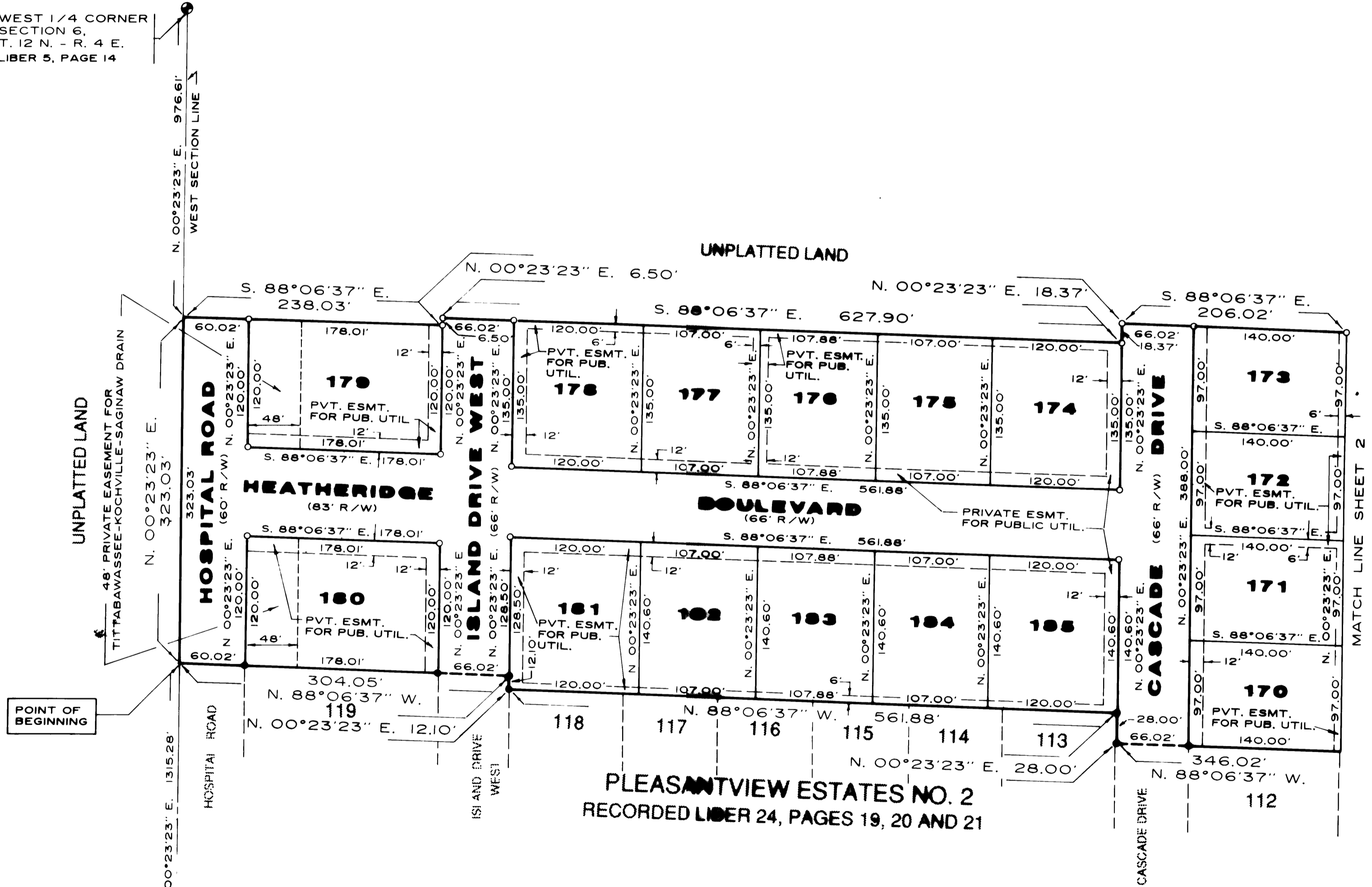


SHEET 1 OF 3



WEST 1/4 CORNER  
SECTION 6,  
T. 12 N. - R. 4 E.  
LIBER 5, PAGE 14

- LEGEND**
- ALL DIMENSIONS ARE GIVEN IN FEET.
  - MONUMENTS, CONSISTING OF IRON RODS, ONE HALF INCH IN DIAMETER AND 36 INCHES IN LENGTH WITH CAP NO. 26454, ENCASED IN CONCRETE CYLINDERS, 4 INCHES IN DIAMETER AND 36 INCHES IN LENGTH HAVE BEEN PLACED AT ALL POINTS SHOWN BY SYMBOL "o".
  - "o" INDICATES FOUND CONCRETE MONUMENT.
  - SET 1/2 INCH IRON ROD, 18 INCHES IN LENGTH WITH CAP NO. 26454, AT ALL PROPERTY CORNERS.
  - (R) INDICATES A RADIAL LINE.
  - (NR) INDICATES A NON-RADIAL LINE.
  - ALL CURVILINEAR MEASUREMENTS ARE ARC DISTANCES.
  - BEARINGS WERE DERIVED FROM "PLEASANTVIEW ESTATES", RECORDED IN LIBER 22, PAGES 32, 33 AND 34.



POINT OF BEGINNING

SOUTHWEST CORNER  
SECTION 6,  
T. 12 N. - R. 4 E.  
LIBER 5, PAGE 14

**RECORDING CERTIFICATE**

State of Michigan }  
Saginaw County }

This plat was received for record on the 4 day of March  
1992 at 12:35 P.M., and recorded in Liber 29 of  
plats on Page(s) 43-45

Mildred M. Dodak  
Mildred M. Dodak, Register of Deeds

CERTIFIED TRUE COPY OF  
RECORDED PLAT  
BY DEPARTMENT OF COMMERCE

Brian D. Ferguson  
Richard E. Lewis, L.L.S.  
Manager, Plat Section

Date April 2, 1992



Brian D. Ferguson  
Brian D. Ferguson, L.L.S.  
Licensed Land Surveyor No. 26454