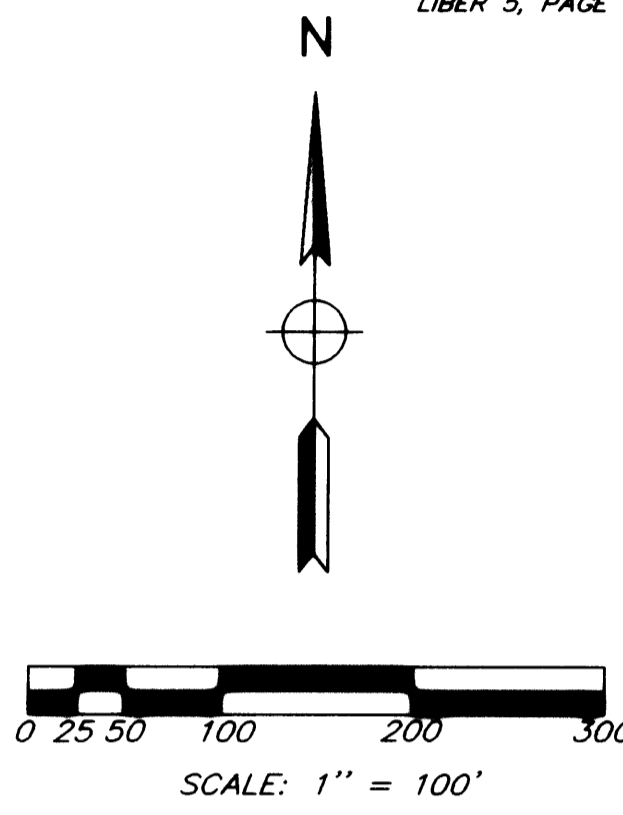
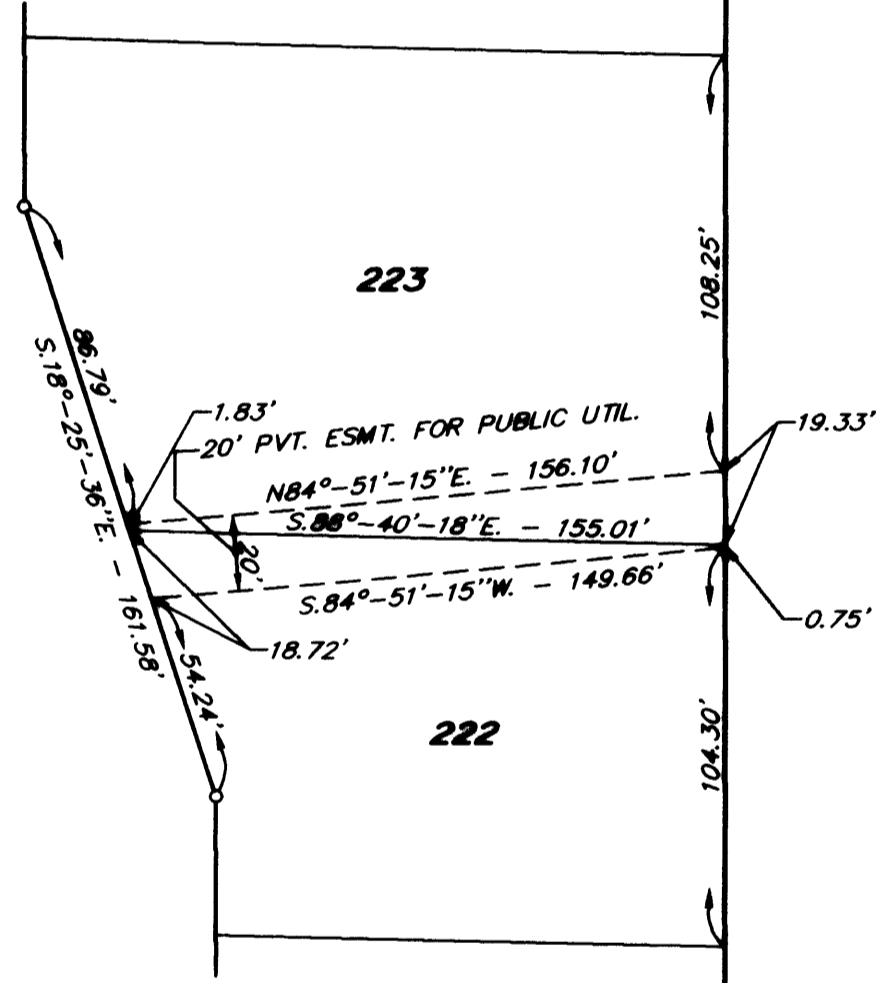
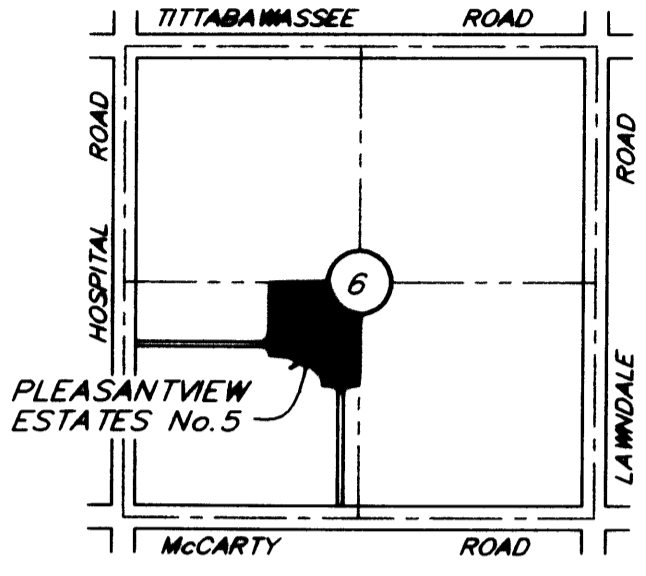
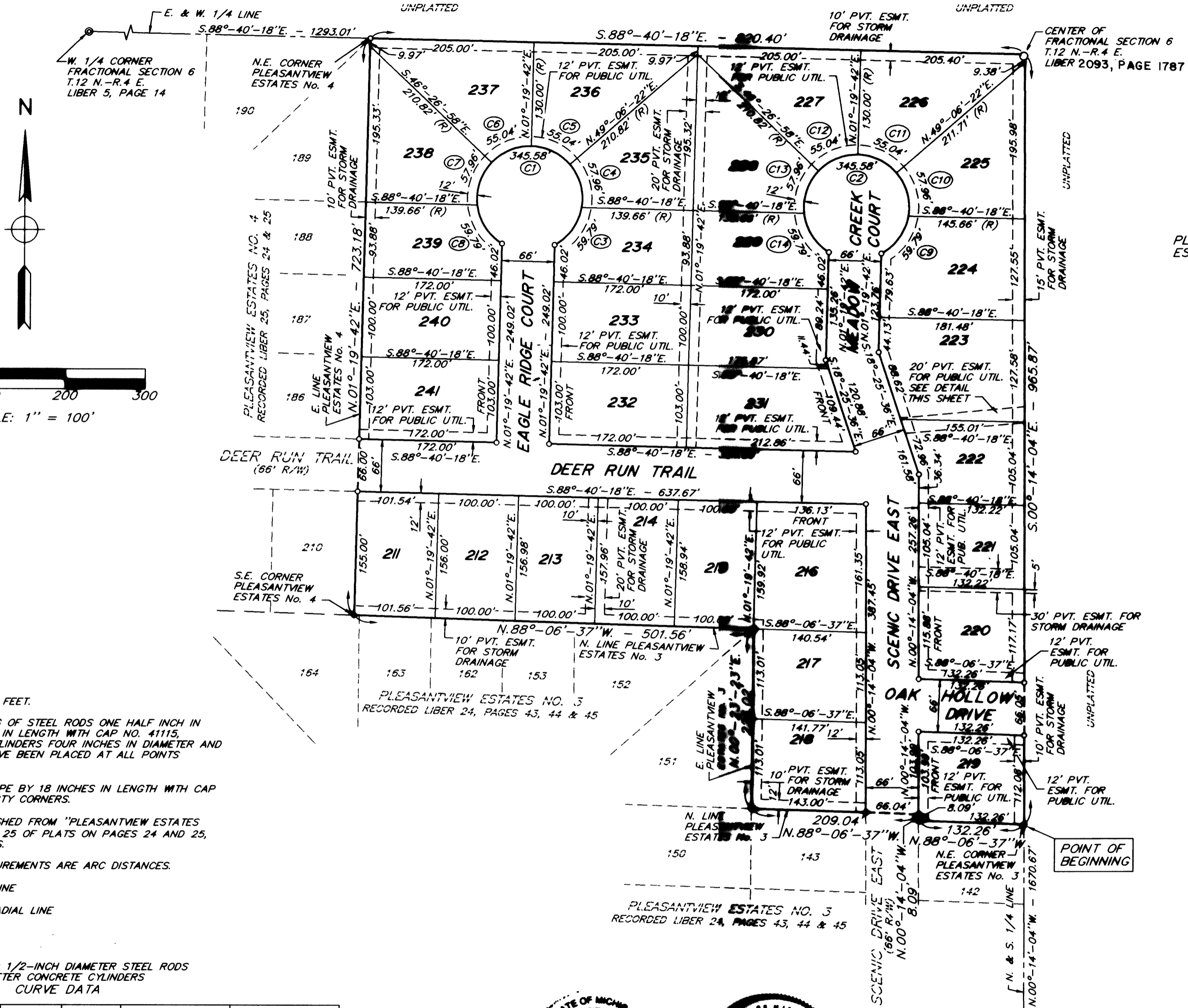


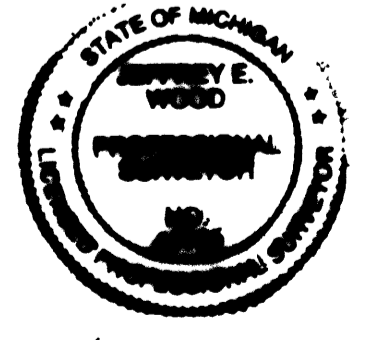
PLEASANTVIEW ESTATES No. 5

PART OF THE NORTHEAST 1/4 OF THE FRACTIONAL SOUTHWEST 1/4 OF FRACTIONAL SECTION 6, T.12 N.-R.4 E.,
SAGINAW TOWNSHIP, SAGINAW COUNTY, MICHIGAN



- LEGEND**
- 1-ALL DIMENSIONS ARE IN FEET.
 - 2-MONUMENTS CONSISTING OF STEEL RODS ONE HALF INCH IN DIAMETER AND 36 INCHES IN LENGTH WITH CAP NO. 41115, ENCASED IN CONCRETE CYLINDERS FOUR INCHES IN DIAMETER AND 36 INCHES IN LENGTH, HAVE BEEN PLACED AT ALL POINTS MARKED "o".
 - 3-SET 3/4 INCH STEEL PIPE BY 18 INCHES IN LENGTH WITH CAP NO. 41115 AT ALL PROPERTY CORNERS.
 - 4-BEARINGS ARE ESTABLISHED FROM "PLEASANTVIEW ESTATES No. 4" RECORDED IN LIBER 25 OF PLATS ON PAGES 24 AND 25, SAGINAW COUNTY RECORDS.
 - 5-ALL CURVILINEAR MEASUREMENTS ARE ARC DISTANCES.
 - 6-(R) INDICATES RADIAL LINE
 - 7-(NR) INDICATES NON-RADIAL LINE
 - 8 - "o" INDICATES FOUND 1/2-INCH DIAMETER STEEL RODS ENCASED IN 4-INCH DIAMETER CONCRETE CYLINDERS
- CURVE DATA**

CURVE	RADIUS	LENGTH	TANGENT	CHORD	BEARING	DELTA
C1	66.00'	345.58'	38.11'	66.00'	N.88°-40'-18"W.	300°-00'-00"
C2	66.00'	345.58'	38.11'	66.00'	N.88°-40'-18"W.	300°-00'-00"
C3	66.00'	59.79'	32.12'	57.77'	N.35°-22'-34"E.	51°-54'-16"
C4	66.00'	57.96'	31.00'	56.12'	N.15°-44'-06"W.	50°-19'-03"
C5	66.00'	55.04'	29.23'	53.46'	N.64°-46'-58"W.	47°-46'-40"
C6	66.00'	55.04'	29.23'	53.46'	S.67°-26'-22"W.	47°-46'-40"
C7	66.00'	57.96'	31.00'	56.12'	S.18°-23'-30"W.	50°-19'-03"
C8	66.00'	59.79'	32.12'	57.77'	S.32°-43'-10"E.	51°-54'-16"
C9	66.00'	59.79'	32.12'	57.77'	N.35°-22'-34"E.	51°-54'-16"
C10	66.00'	57.96'	31.00'	56.12'	N.15°-44'-06"W.	50°-19'-03"
C11	66.00'	55.04'	29.23'	53.46'	N.64°-46'-58"W.	47°-46'-40"
C12	66.00'	55.04'	29.23'	53.46'	S.67°-26'-22"W.	47°-46'-40"
C13	66.00'	57.96'	31.00'	56.12'	S.18°-23'-30"W.	50°-19'-03"
C14	66.00'	59.79'	32.12'	57.77'	S.32°-43'-10"E.	51°-54'-16"



Jeffrey E. Wood, P.S. Date 3-30-99
Michigan Registration No. 41115
230 South Washington Avenue
Saginaw, Michigan 48605



Dale K. Deibel, P.E. Date 3-30-99
President
230 South Washington Avenue
Saginaw, Michigan 48605

CERTIFIED TRUE COPY OF
RECORDED PLAT
BY DEPARTMENT OF CONSUMER
AND INDUSTRY SERVICES
BY Maynard R. Dyer, P.S.
MAYNARD R. DYER, P.S.
MANAGER
SUBDIVISION CONTROL SECTION
DATE 5-18-99