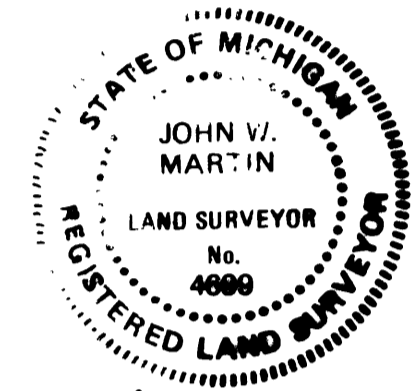
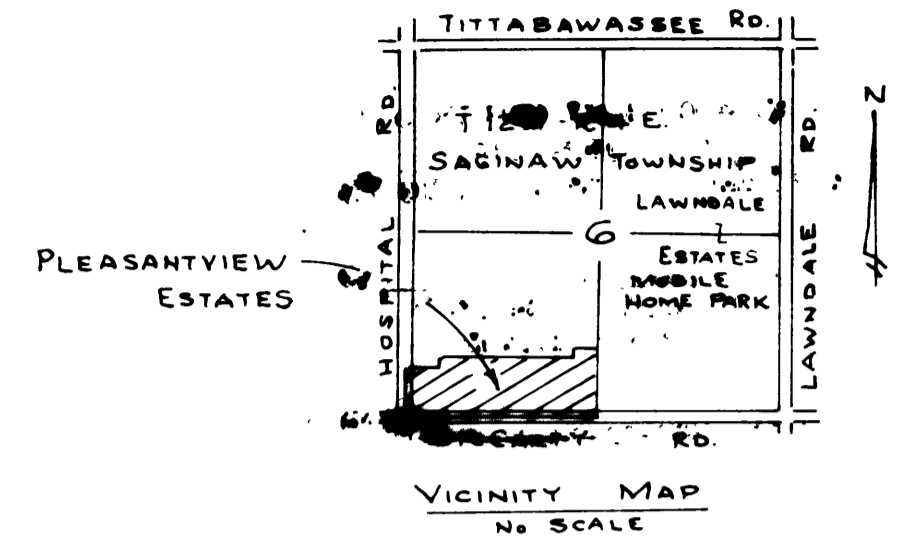
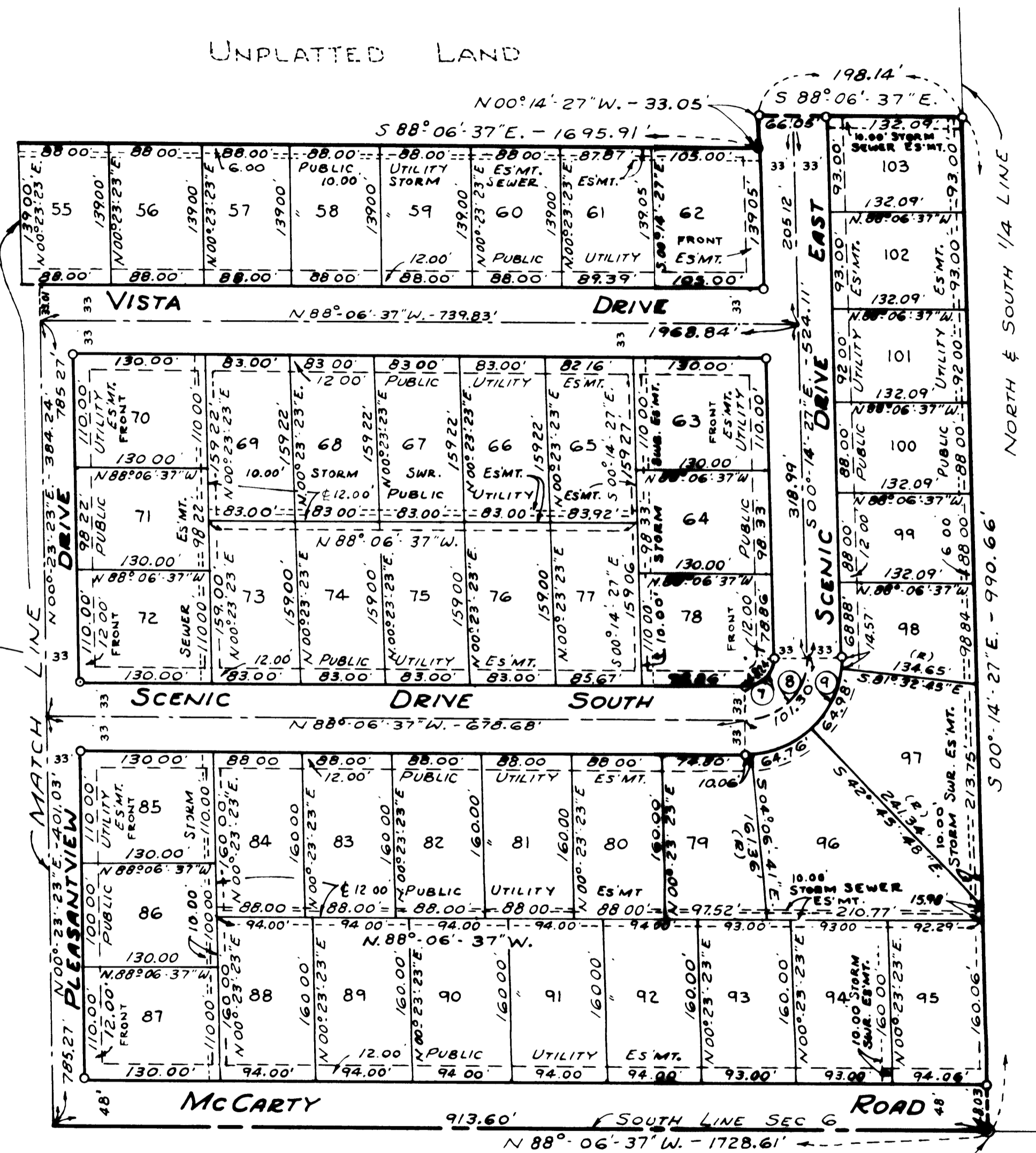
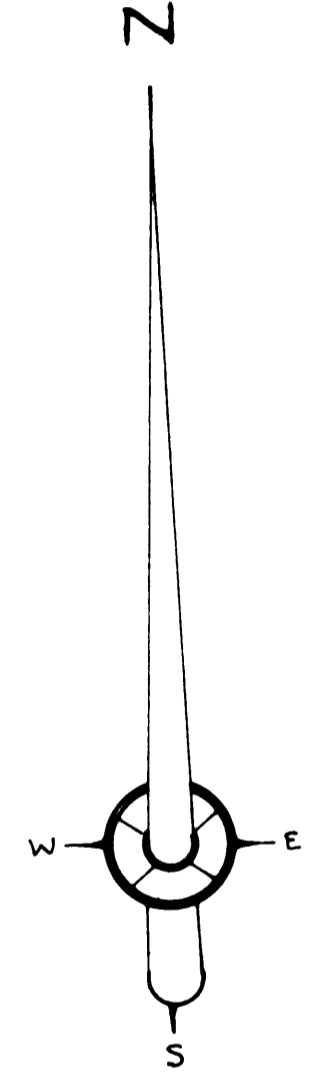


PLEASANTVIEW ESTATES

PART OF THE SOUTHWEST 1/4 OF FRACTIONAL SECTION 6, T.12N.-R.4E.
SAGINAW TOWNSHIP, SAGINAW COUNTY, MICHIGAN



John W. Martin
JOHN W. MARTIN



SEE SHEET 1

CURVE DATA						
NO	DELTA ANGLE	RADIUS	ARC	CHORD	CHD. BEARING	TANGENT
1	88° 30' 00"	30.00	46.34'	41.87'	N 43° 51' 37" W.	29.23'
2	88° 30' 00"	63.00	97.31'	87.92'	N 43° 51' 37" W.	61.37'
3	88° 30' 00"	96.00	148.28'	133.98'	N 43° 51' 37" W.	93.52'
4	91° 30' 00"	30.00	47.91'	42.98'	S 46° 08' 23" W.	30.80'
5	91° 30' 00"	63.00	100.61'	90.25'	S 46° 08' 23" W.	64.67'
6	91° 30' 00"	96.00	153.31'	137.53'	S 46° 08' 23" W.	98.55'
7	92° 07' 50"	30.00	48.24'	43.21'	N 45° 49' 28" E.	31.14'
8	92° 07' 50"	63.00	101.30'	90.74'	N 45° 49' 28" E.	65.39'
9	92° 07' 50"	96.00	154.37'	138.27'	N 45° 49' 28" E.	99.64'

S. 1/4 COR. SECTION 6
T. 12 N. - R. 4 E
SAGINAW TOWNSHIP
SAGINAW CO., MICHIGAN.

LEGEND
 1- ALL DIMENSIONS ARE GIVEN IN FEET
 2- CONCRETE MONUMENTS HAVE BEEN PLACED AT ALL POINTS MARKED "O"
 3- SET SOLID IRON BARS 1/2" IN DIA. BY 18" IN LENGTH AT ALL LOT CORNERS
 4- ALL CURVILINEAR MEASUREMENTS ARE ARC DISTANCES
 5- (R) INDICATES A RADIAL LINE
 6- BEARINGS ARE TRUE AS DETERMINED FROM AN OBSERVATION OF POLARIS ON SEPTEMBER 22, 1979