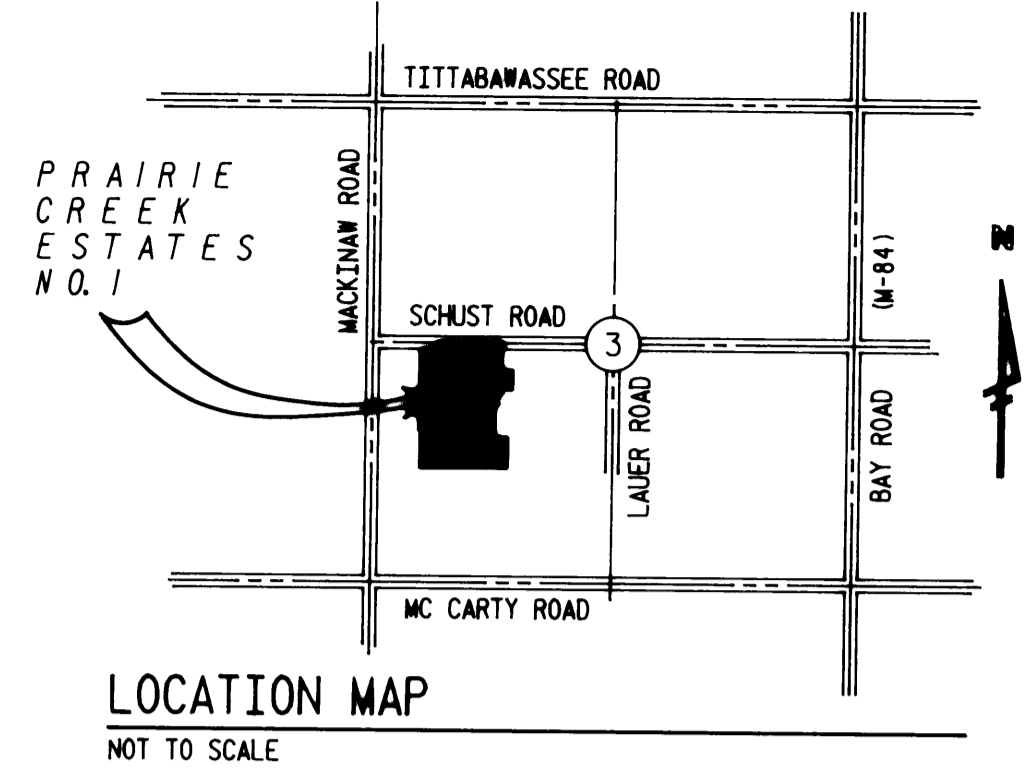


PRAIRIE CREEK ESTATES NO. 1

PART OF THE NORTH 1/2 OF THE SOUTHWEST 1/4 OF
FRACTIONAL SECTION 3, T12N-R4E,
SAGINAW TOWNSHIP, SAGINAW COUNTY, MICHIGAN

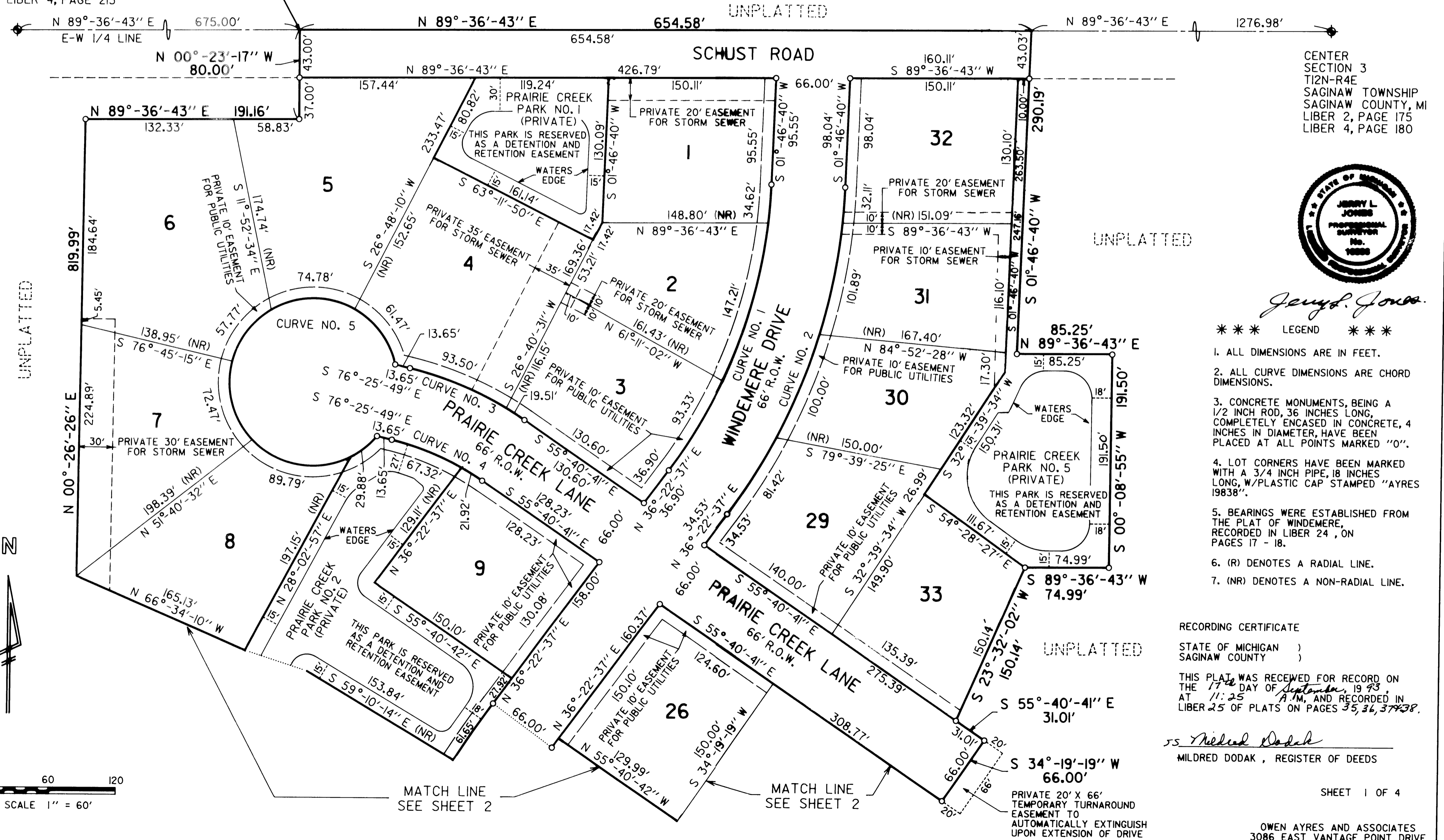


LOCATION MAP
NOT TO SCALE

CURVE DATA					
CURVE NO.	RADIUS	CENTRAL ANGLE	TANGENT	BEARING	CHORD
CV NO. 1	457.00'	34°-35'-57"	142.34'	N 19°-04'-38" E	271.79'
CV NO. 2	523.00'	34°-35'-57"	162.89'	N 19°-04'-38" E	311.05'
CV NO. 3	313.00'	20°-45'-08"	57.31'	N 66°-03'-15" W	112.75'
CV NO. 4	247.00'	20°-45'-08"	45.23'	N 66°-03'-15" W	88.97'
CV NO. 5	75.00'	307°-47'-32"	—	N 13°-34'-11" E	66.00'

WEST 1/4 CORNER
SECTION 3
T12N-R4E
SAGINAW TOWNSHIP
SAGINAW COUNTY, MI
LIBER 4, PAGE 213

POINT OF BEGINNING
N 89°-36'-43" E, 675.00'
FROM THE WEST 1/4
COR., SEC. 3, T12N-R4E.



Jerry L. Jones

- *** LEGEND ***
- ALL DIMENSIONS ARE IN FEET.
 - ALL CURVE DIMENSIONS ARE CHORD DIMENSIONS.
 - CONCRETE MONUMENTS, BEING A 1/2 INCH ROD, 36 INCHES LONG, COMPLETELY ENCASED IN CONCRETE, 4 INCHES IN DIAMETER, HAVE BEEN PLACED AT ALL POINTS MARKED "O".
 - LOT CORNERS HAVE BEEN MARKED WITH A 3/4 INCH PIPE, 18 INCHES LONG, W/PLASTIC CAP STAMPED "AYRES 19838".
 - BEARINGS WERE ESTABLISHED FROM THE PLAT OF WINDEMERE, RECORDED IN LIBER 24, ON PAGES 17 - 18.
 - (R) DENOTES A RADIAL LINE.
 - (NR) DENOTES A NON-RADIAL LINE.

RECORDING CERTIFICATE
STATE OF MICHIGAN)
SAGINAW COUNTY)

THIS PLAT WAS RECEIVED FOR RECORD ON
THE 17th DAY OF September, 1993,
AT 11:25 A.M. AND RECORDED IN
LIBER 25 OF PLATS ON PAGES 35, 36, 37 & 38.

Mildred Dodak
MILDRED DODAK, REGISTER OF DEEDS